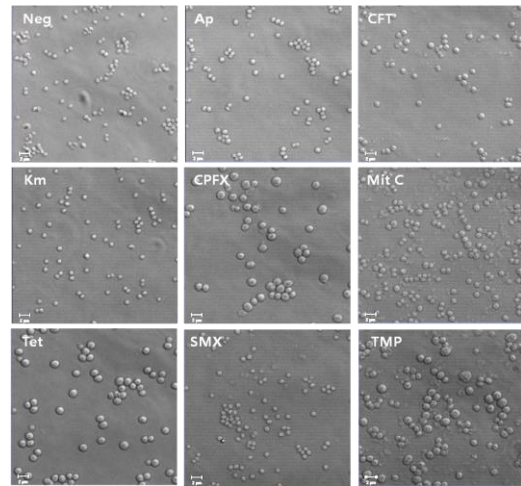
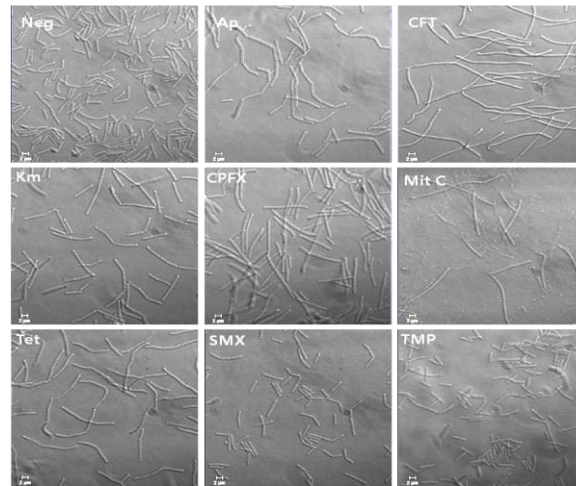
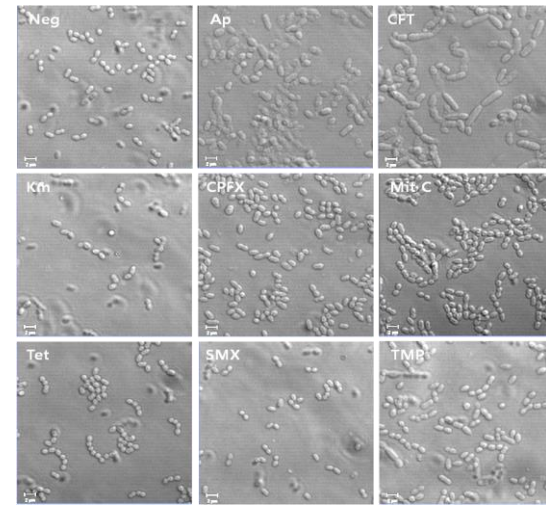
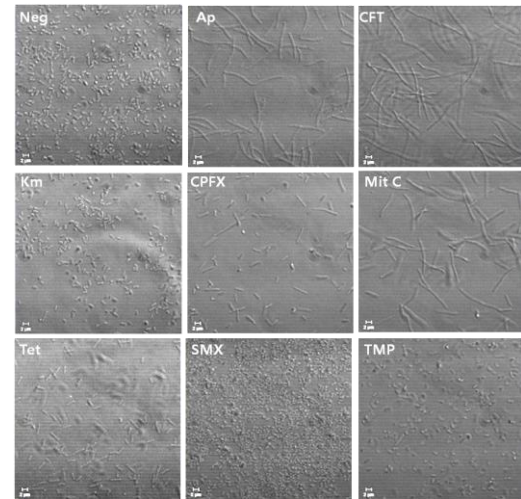
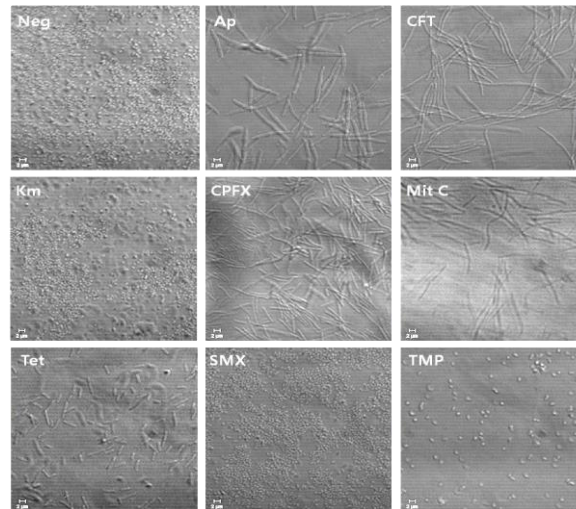
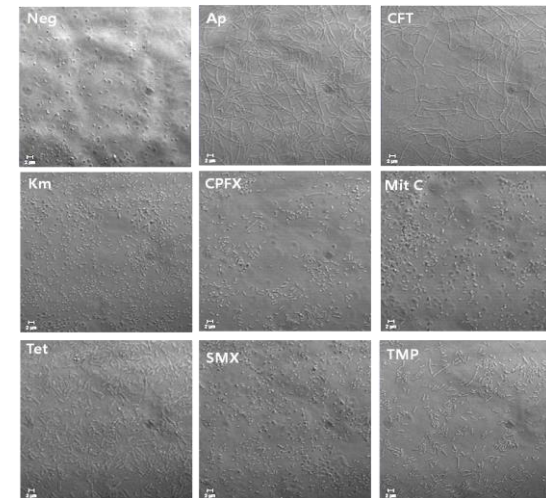


(A)**(B)****(C)****(D)****(E)****(F)**

Supplementary Figure 1. Morphological changes of various bacteria in the presence the sub-lethal doses of 8 different antibiotics. (A) Gram (+) *S. aureus* (B) Gram (+) *B. cereus* (C) Gram (+) *E. faecalis* (D) Gram (-) *E. coli* K12 (E) Gram (-) *E. coli* Crooks (F) Gram (-) *P. aeruginosa*.

AP; ampicillin, CFT; cefotaxime, Km; kanamycin, CPFX; ciprofloxacin, MitC; mitomycin C, Tet; tetracycline, SMX; sulfamethoxazole, TMP; trimethoprim.