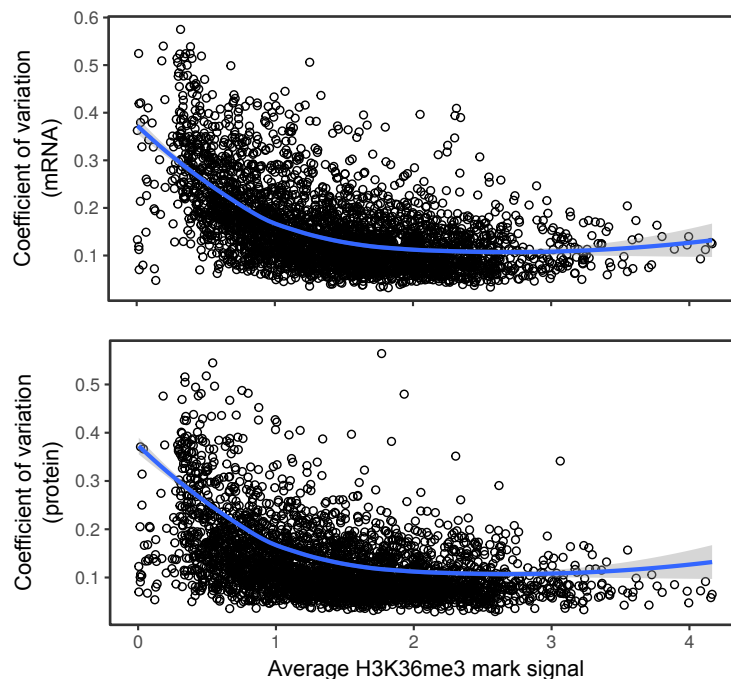


Supplemental Figure S4 A H3K36me3 signal is enriched in clusters with lowest expression variability (clusters T1, P4 and P5). The gene expression variability is significantly lower for T1 cluster compared to T2 (Kolmogorov-Smirnov test P-value < 0.0001).



Supplemental Figure S4 B Genes with the highest expression variability on both mRNA and protein level have the lowest H3K36me3 signal.