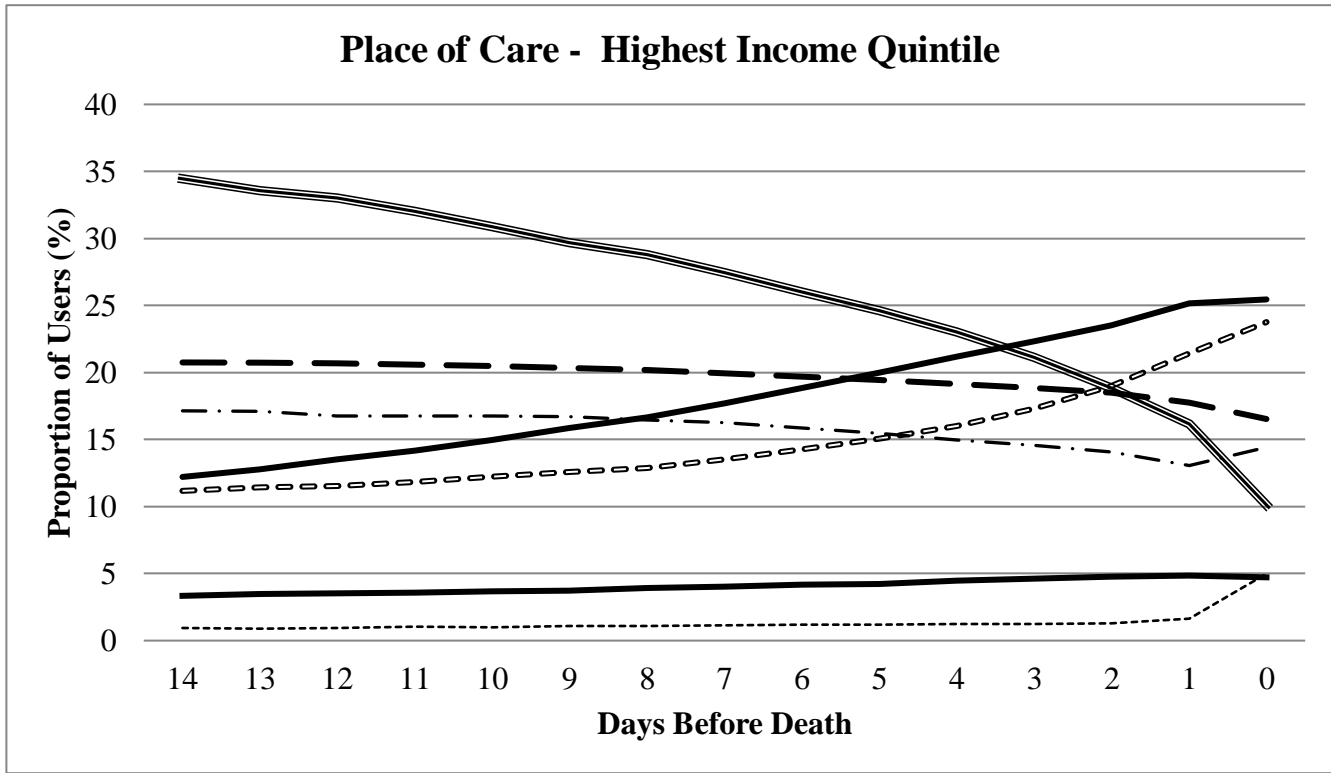
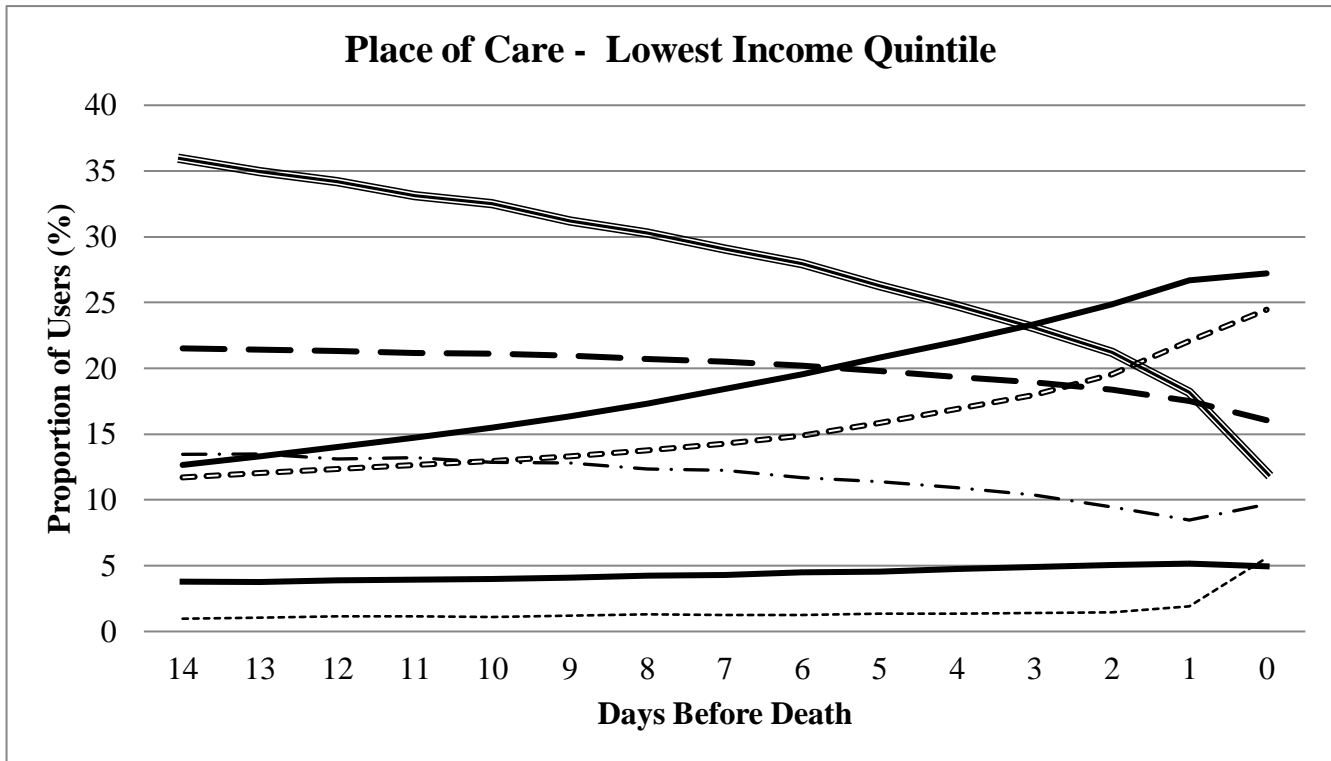


Supplementary Figure S2: Place of care in the last two weeks of life by Income Quintile (Lowest Income Quintile N=53,492; Highest Income Quintile N=41,207)



Palliative-Acute Hospital Care
 Acute Hospital Care
 Emergency Department
 Complex Continuing Care
 Long-term Care
 Community-based Care
 No Health Services