

## **TRPM7 and MagT1 in the osteogenic differentiation of human mesenchymal stem cells**

Sara Castiglioni, Valentina Romeo, Laura Locatelli, Alessandra Cazzaniga and Jeanette AM Maier

## Supplementary Figures

Figure S1A

Densitometric analysis was performed by the ImageJ software and TRPM7 or MagT1/actin ratio was calculated on three separate experiments.

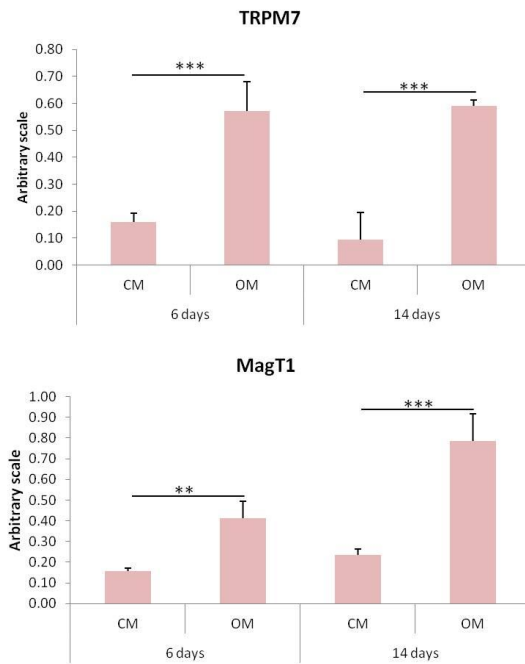


Figure S1B

Full-length blots performed on extracts from hMSC cultured in OM or CM for 6 or 14 days using antibodies against TRPM7 or MagT1. Actin was used as a control of loading.

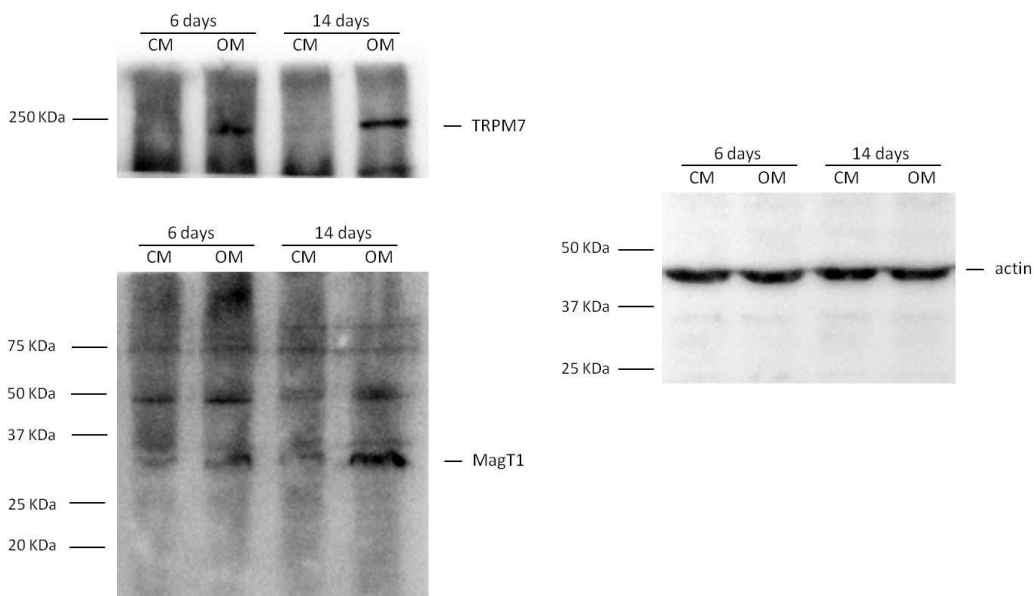


Figure S2A

Densitometric analysis was performed by the ImageJ software and TRPM7 or MagT1/actin ratio was calculated on three separate experiments.

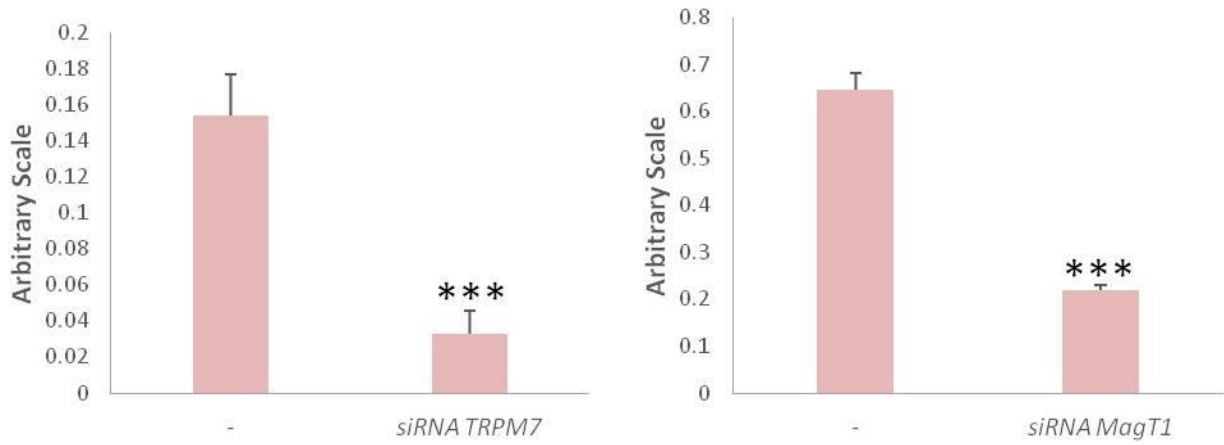


Figure S2B

Full-length blots performed on extracts from hMSC transfected with siRNAs targeting *TRPM7*, *MagT1* or non silencing sequences (-) using antibodies against TRPM7 and MagT1. Actin was used as a control of loading.

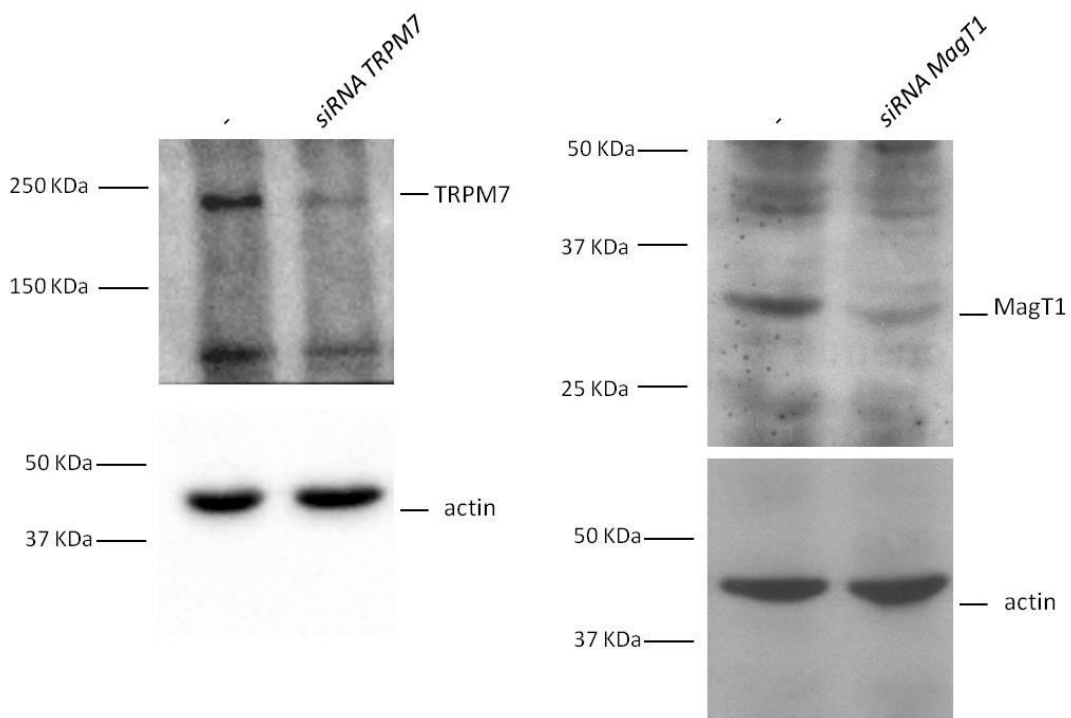


Figure S5A

Densitometric analysis was performed by the ImageJ software and LC3B-II or beclin 1/actin ratio was calculated on three separate experiments.

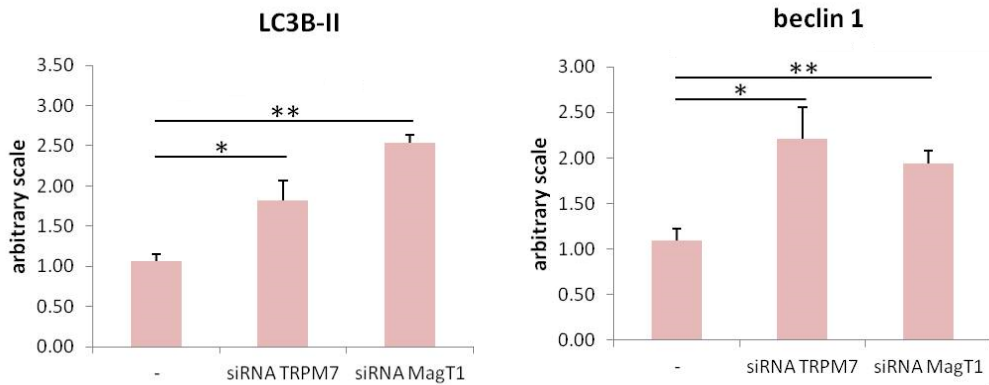


Figure S5B

Full-length blots performed on extracts from hMSC transfected with siRNAs targeting *TRPM7*, *MagT1* or non silencing sequences (-) using antibodies against LC3B and beclin 1. Actin was used as a control of loading.

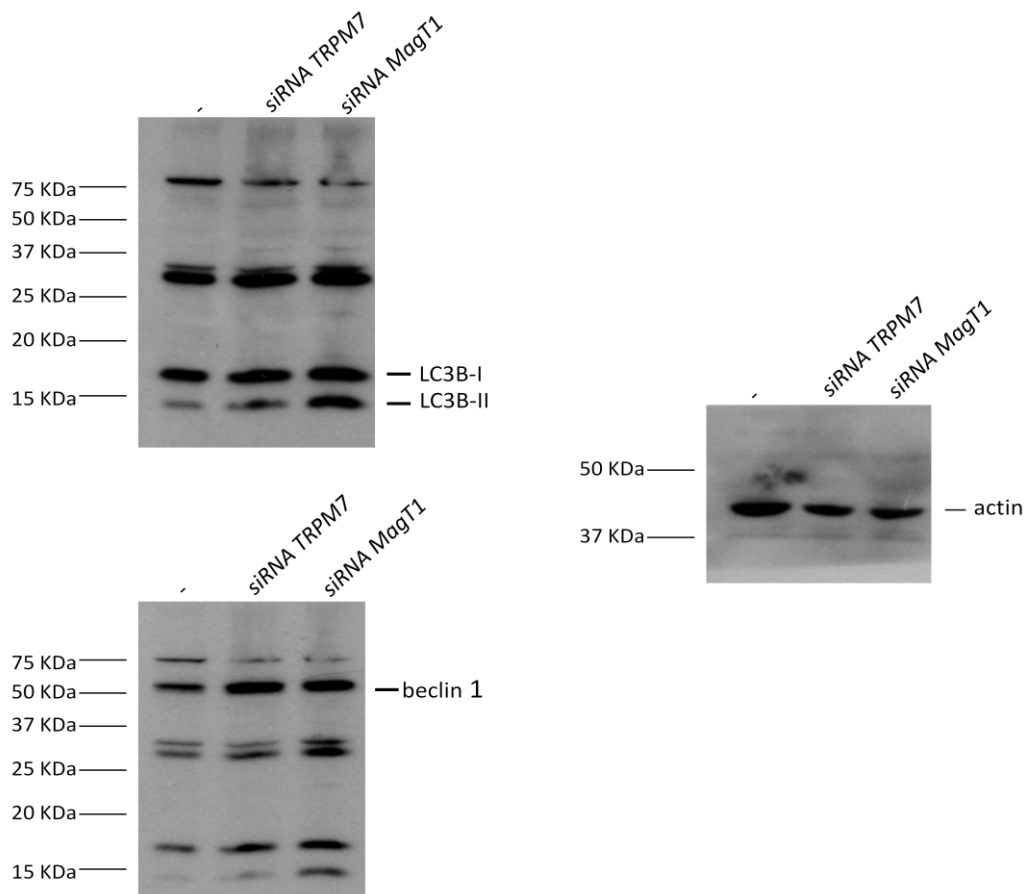


Figure S6A

Densitometric analysis was performed by the ImageJ software and TRPM7 or MagT1/actin ratio was calculated on three separate experiments.

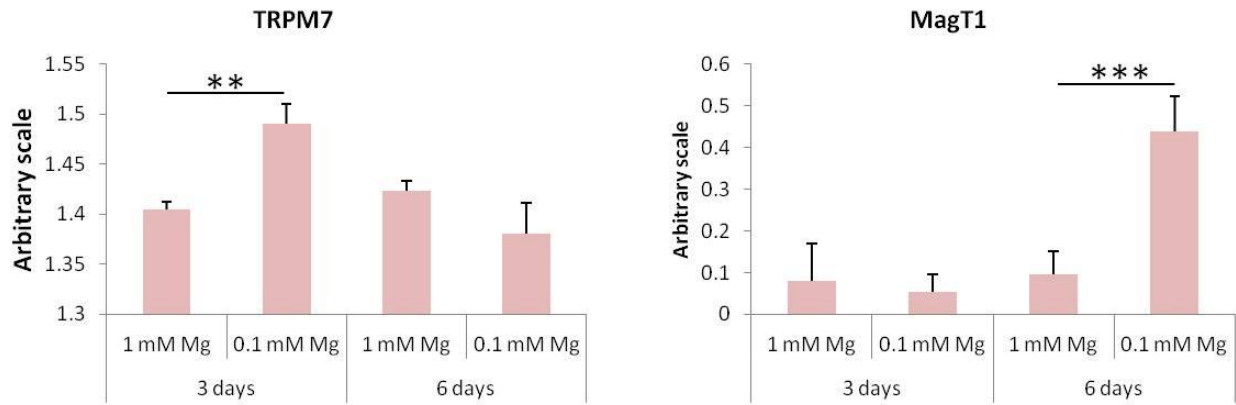


Figure S6B

Full-length blots performed on extracts from hMSC cultured in 1.0 or 0.1 mM Mg for 3 or 6 days using antibodies against TRPM7 or MagT1. Actin was used as a control of loading.

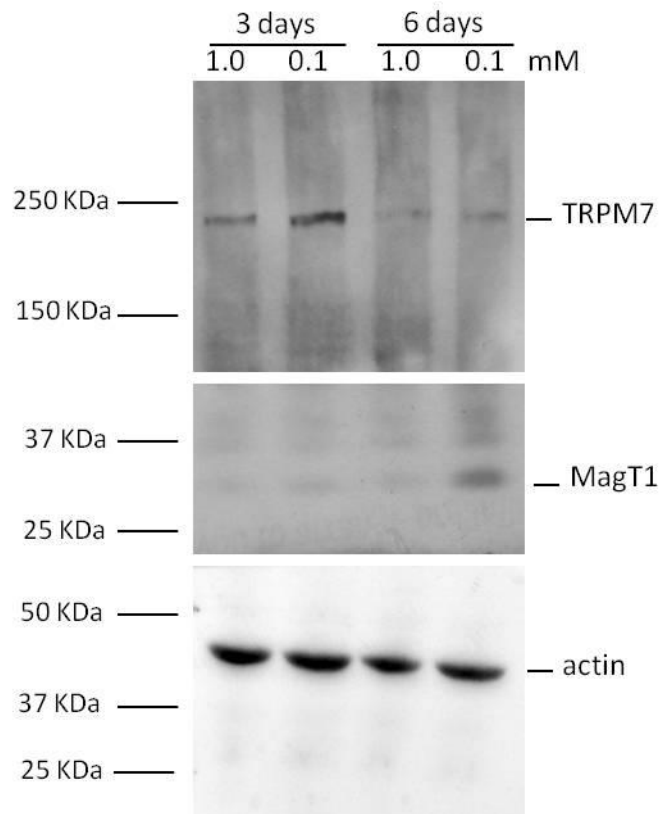


Figure S7A

Densitometric analysis was performed by the ImageJ software and LC3B-II or beclin 1/actin ratio was calculated on three separate experiments.

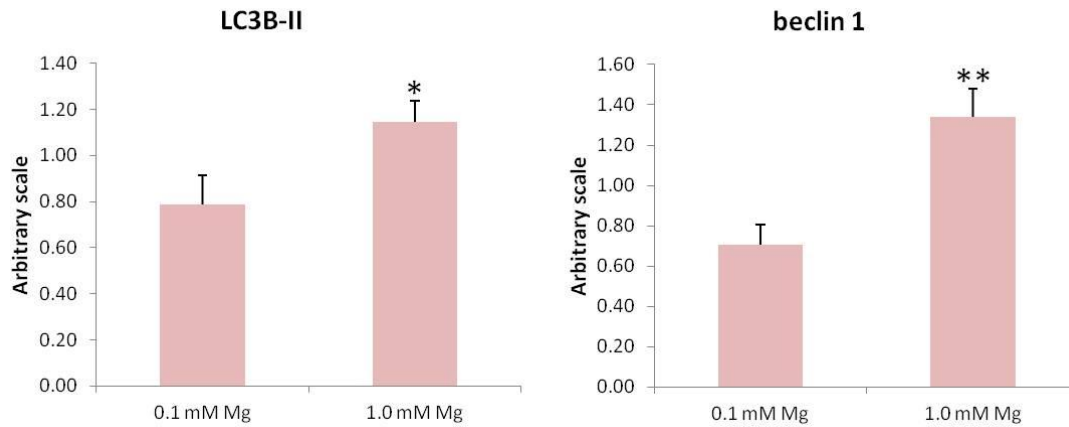


Figure S7B

Full-length blots performed on extracts from hMSC cultured in 0.1 or 1.0 mM magnesium using antibodies against LC3B and beclin 1. Actin was used as a control of loading.

