

Supplementary materials

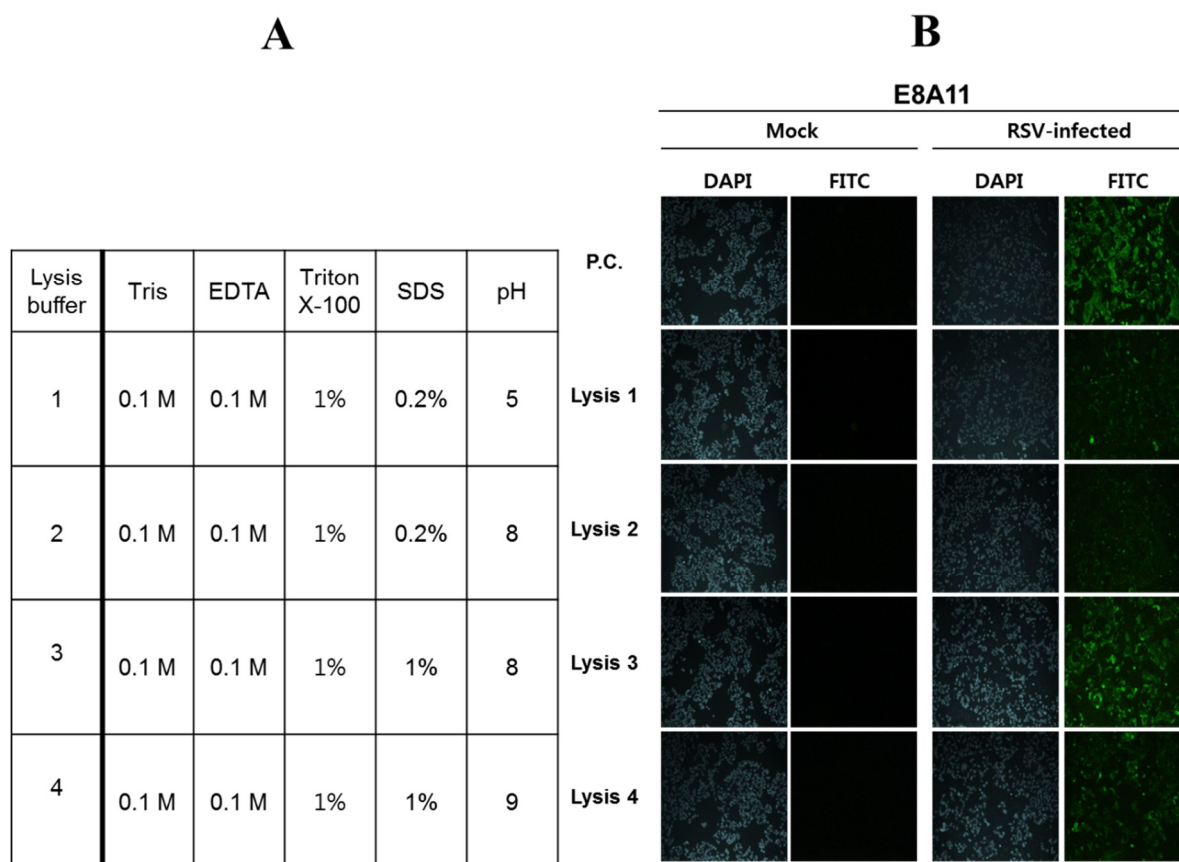


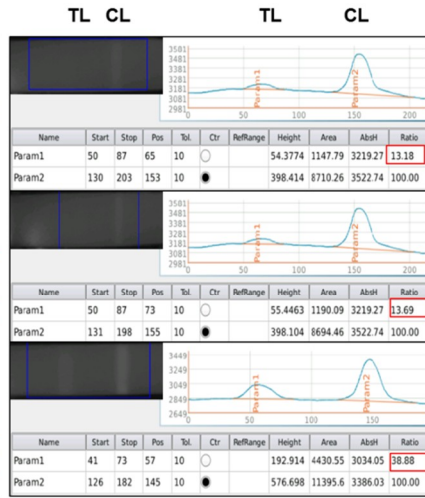
Figure S1. Effect of amount of SDS and different pH on E8A11 activity. Different condition of lysis buffer (A) and IFA result (B). Cells were infected with RSV for 24 h and fixed with 4% paraformaldehyde. After fixation, cells were treated with lysis buffer (1-4) and washed with PBST three times. Fluorescence was detected with a FITC-conjugated secondary antibody. P.C., commercial anti-RSV Fusion antibody

A

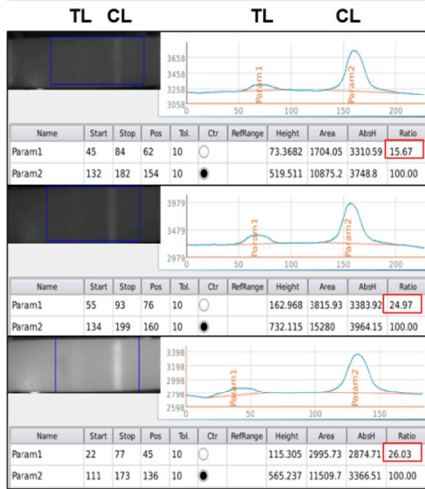
BSA 0 µg/mL



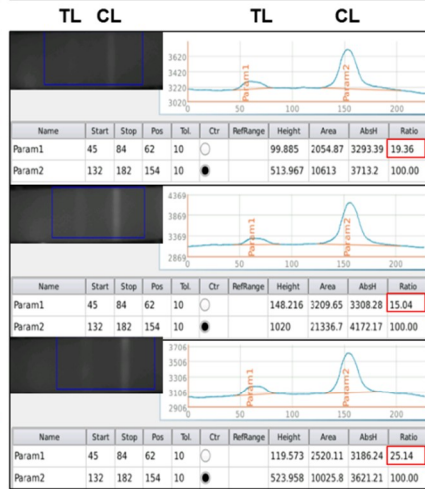
BSA 0.31 µg/mL



BSA 0.63 µg/mL



BSA 01.25 µg/mL



BSA 2.5 µg/mL



BSA 5 µg/mL



B

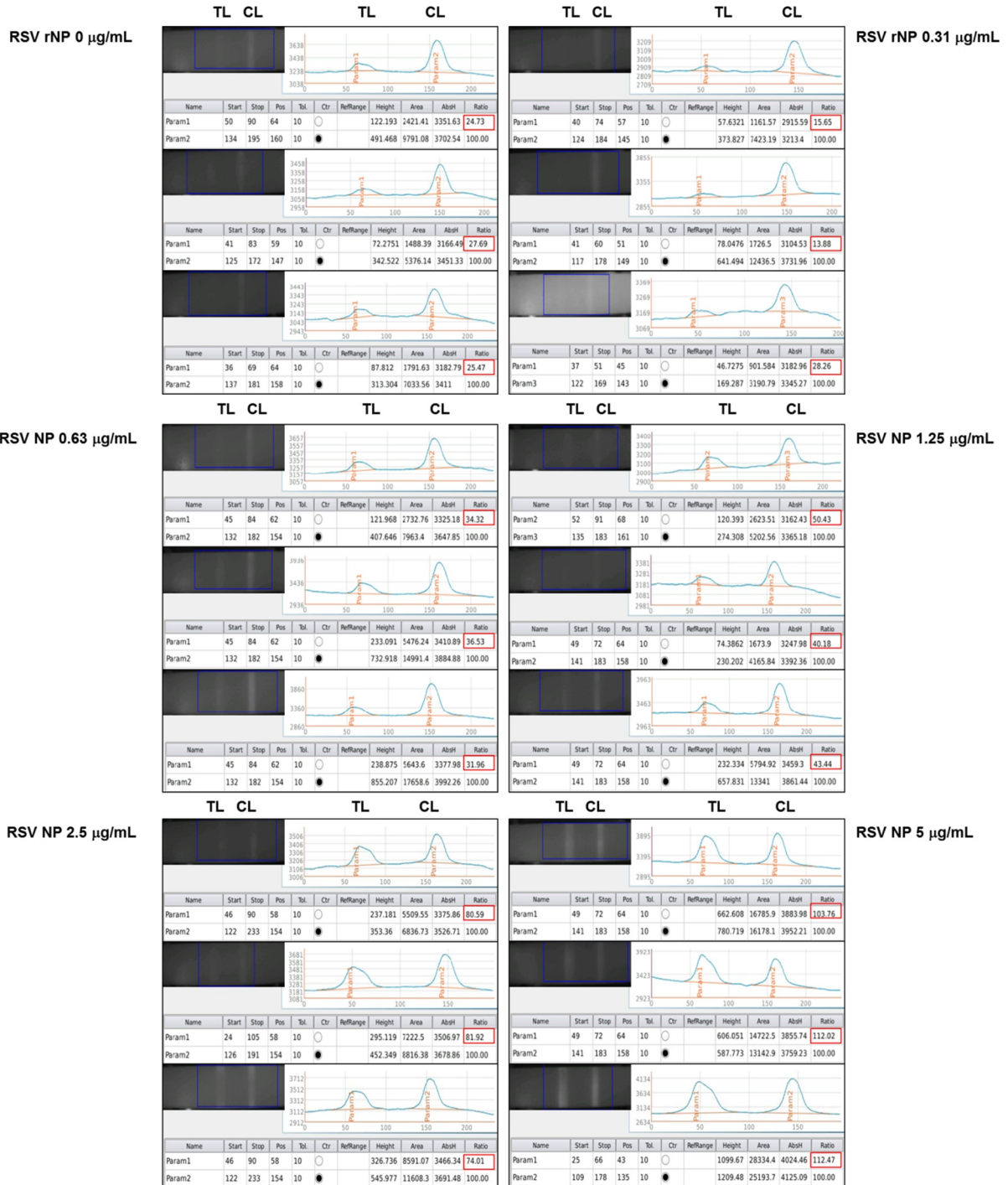
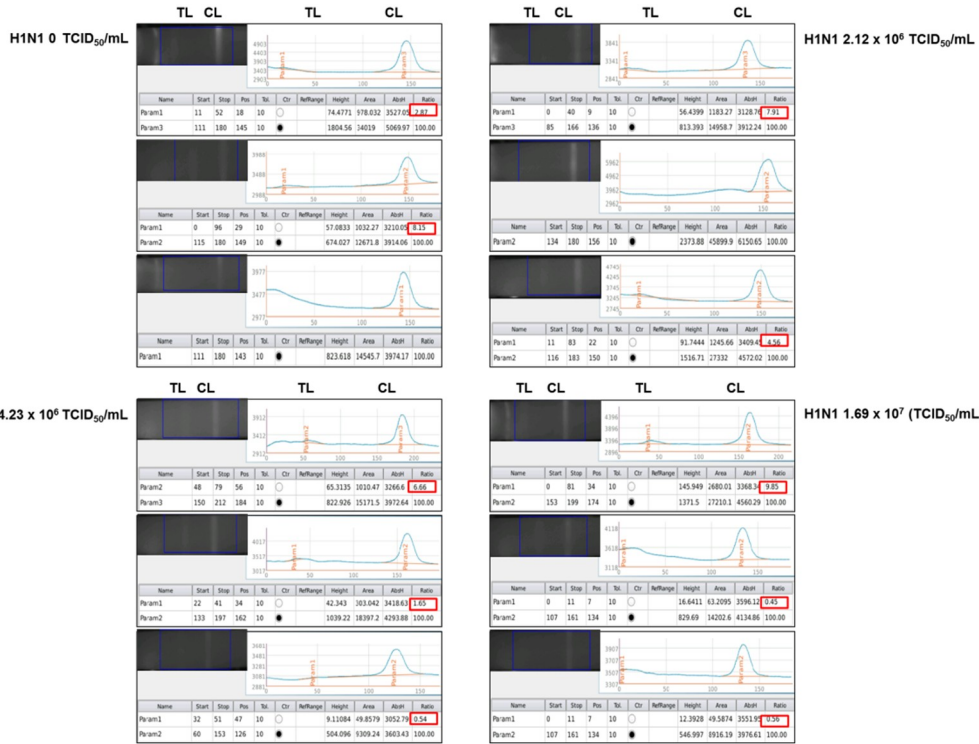


Figure S2. Raw data of FICT assay with antigen. BSA (A) and RSV rNP(B). Red box indicates each value of TL/CL.



B

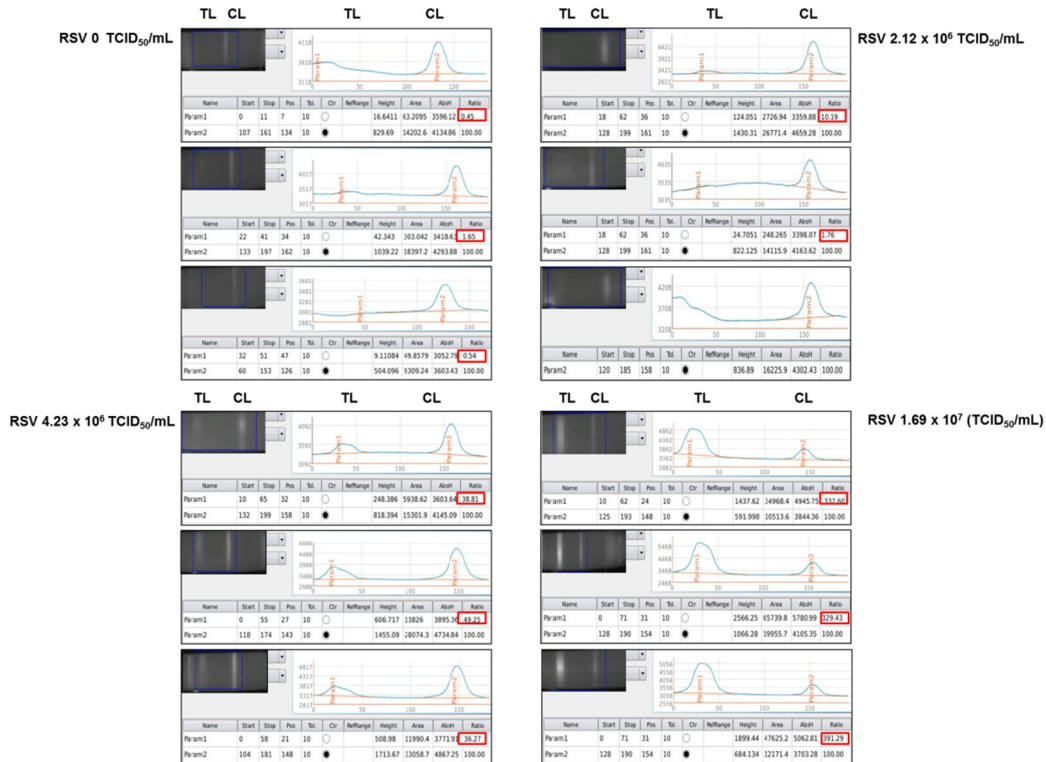
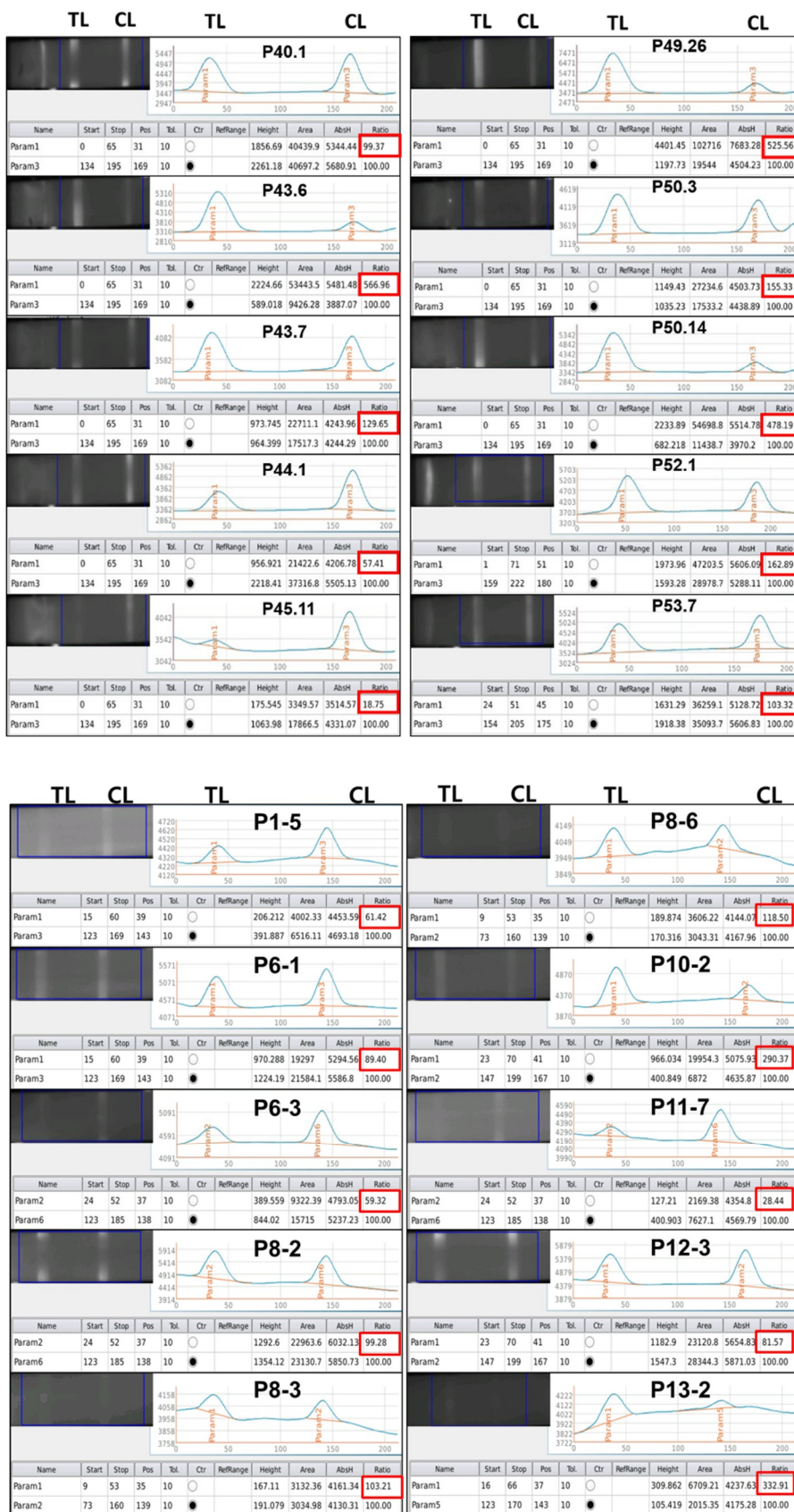
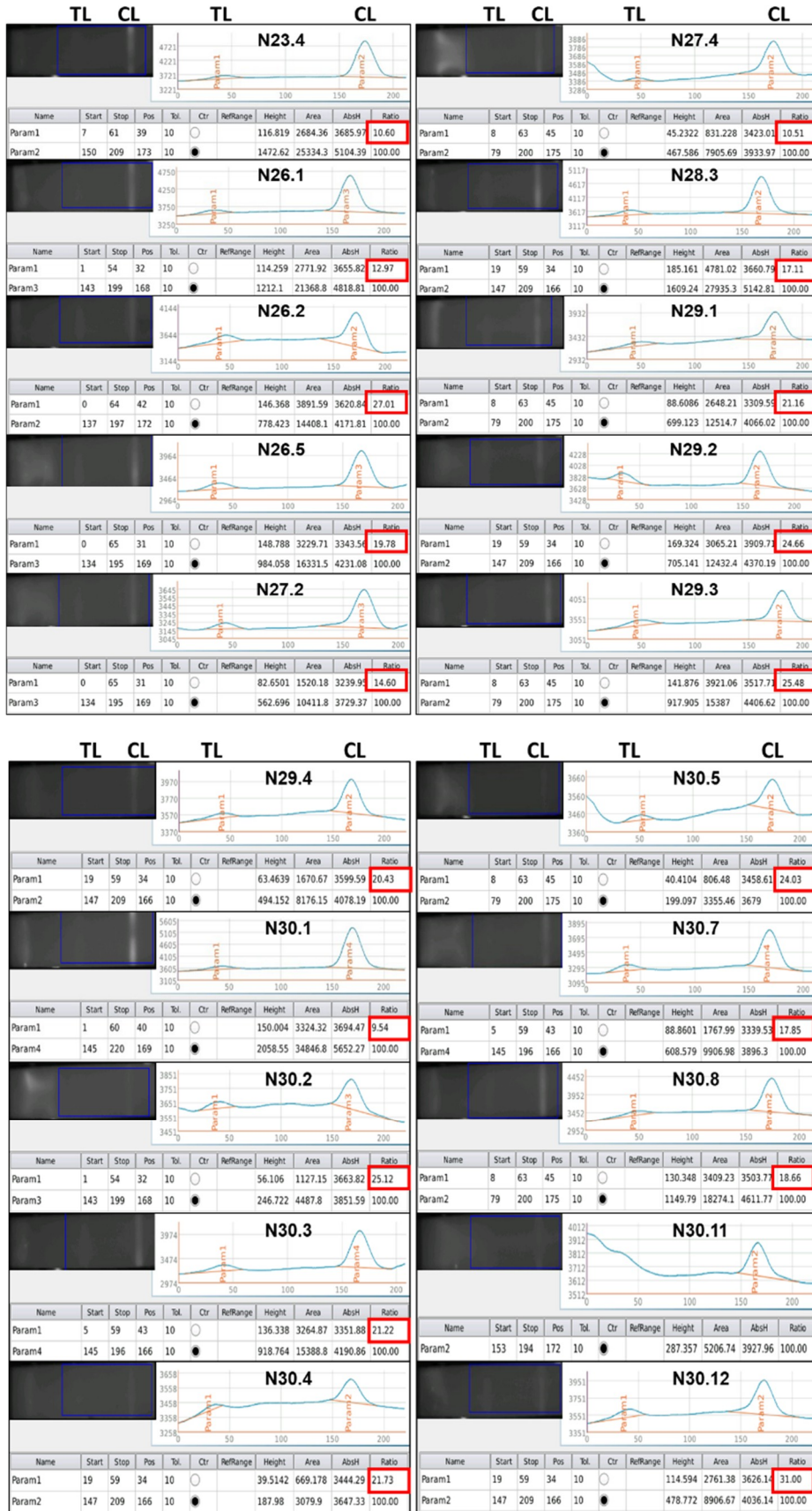


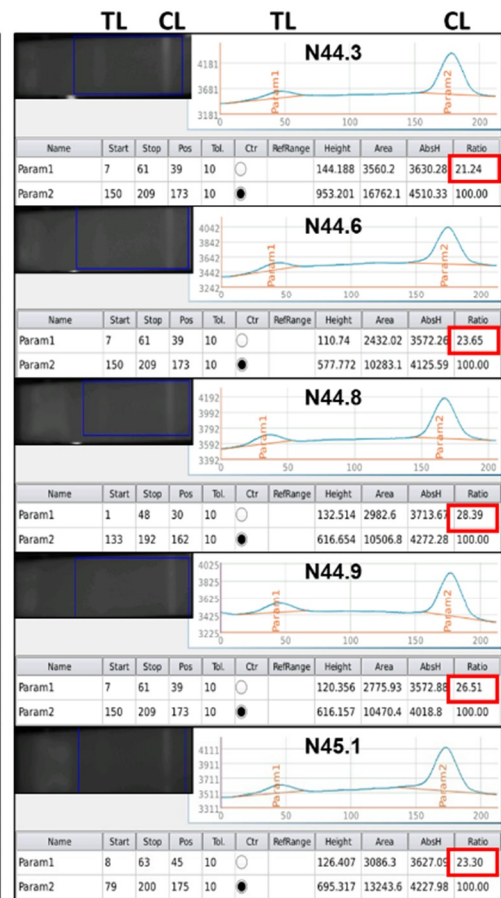
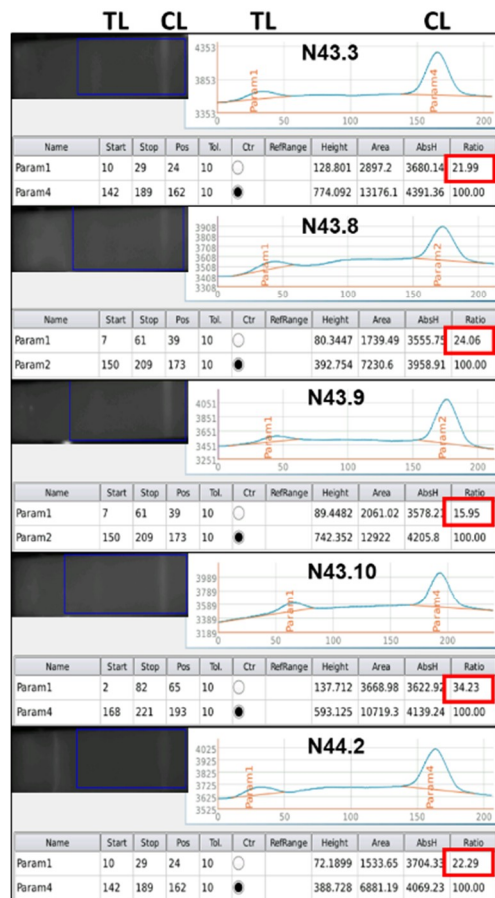
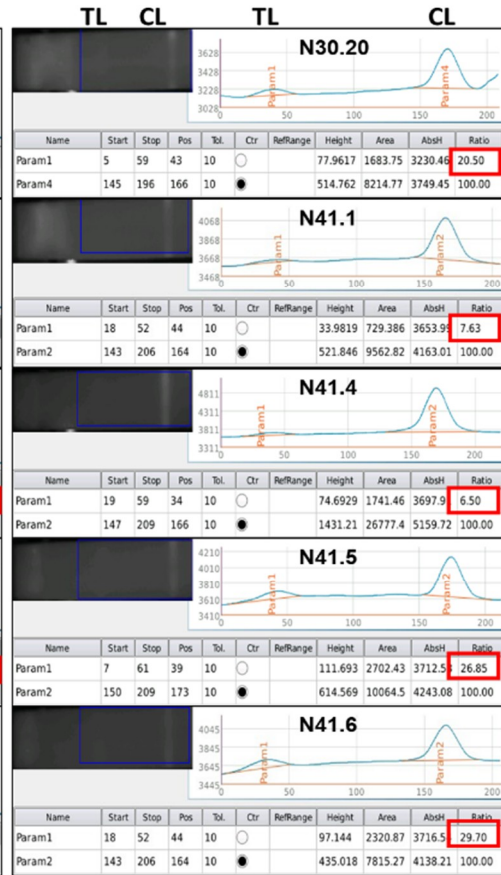
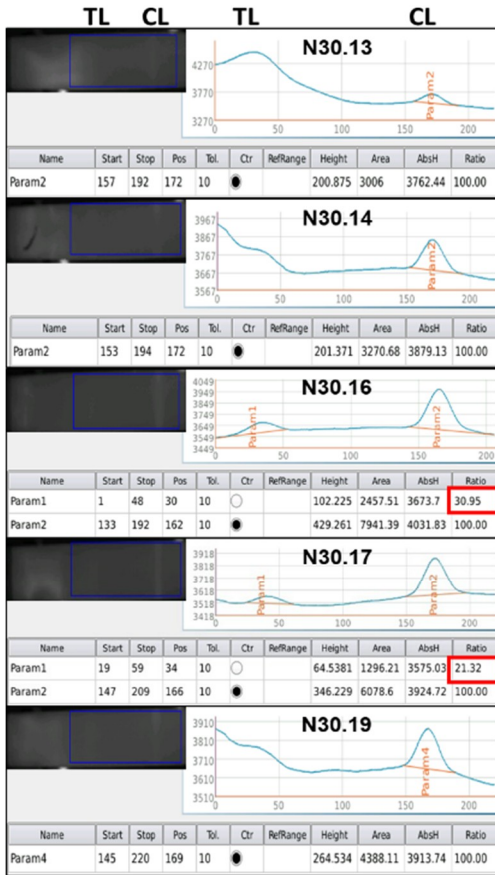
Figure S3. Raw data of FICT assay with virus. (A) H1N1 and RSV(B). Red box indicates each value of TL/CL.

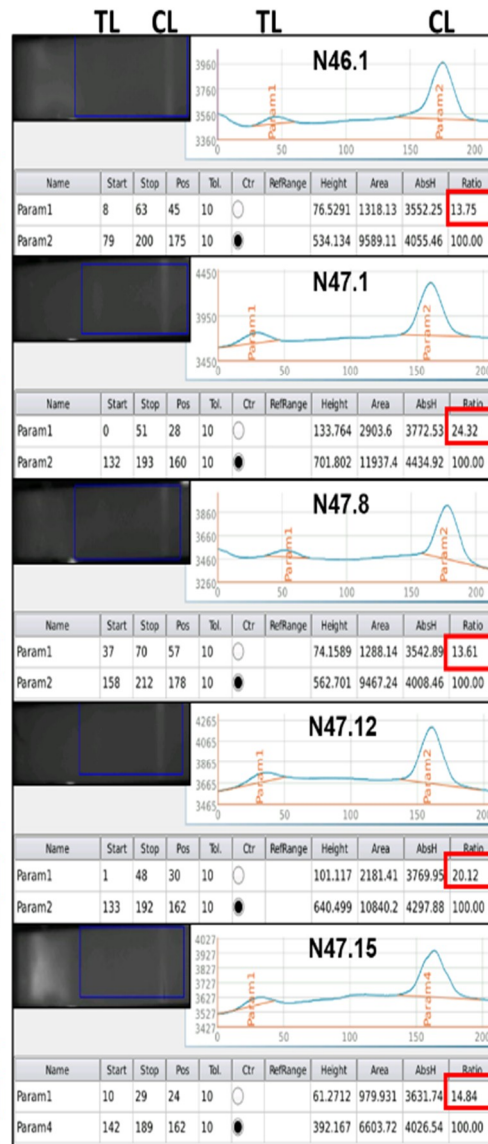
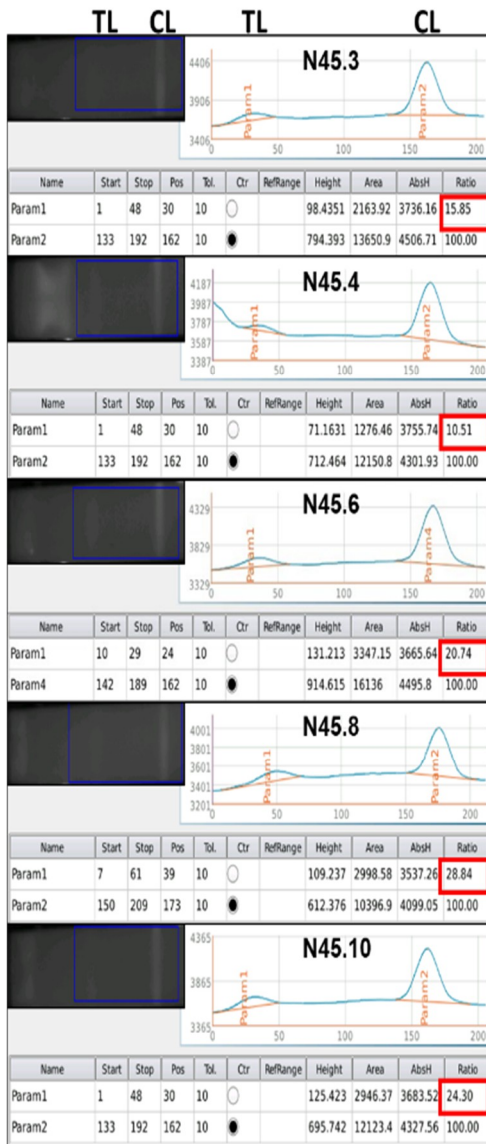
A

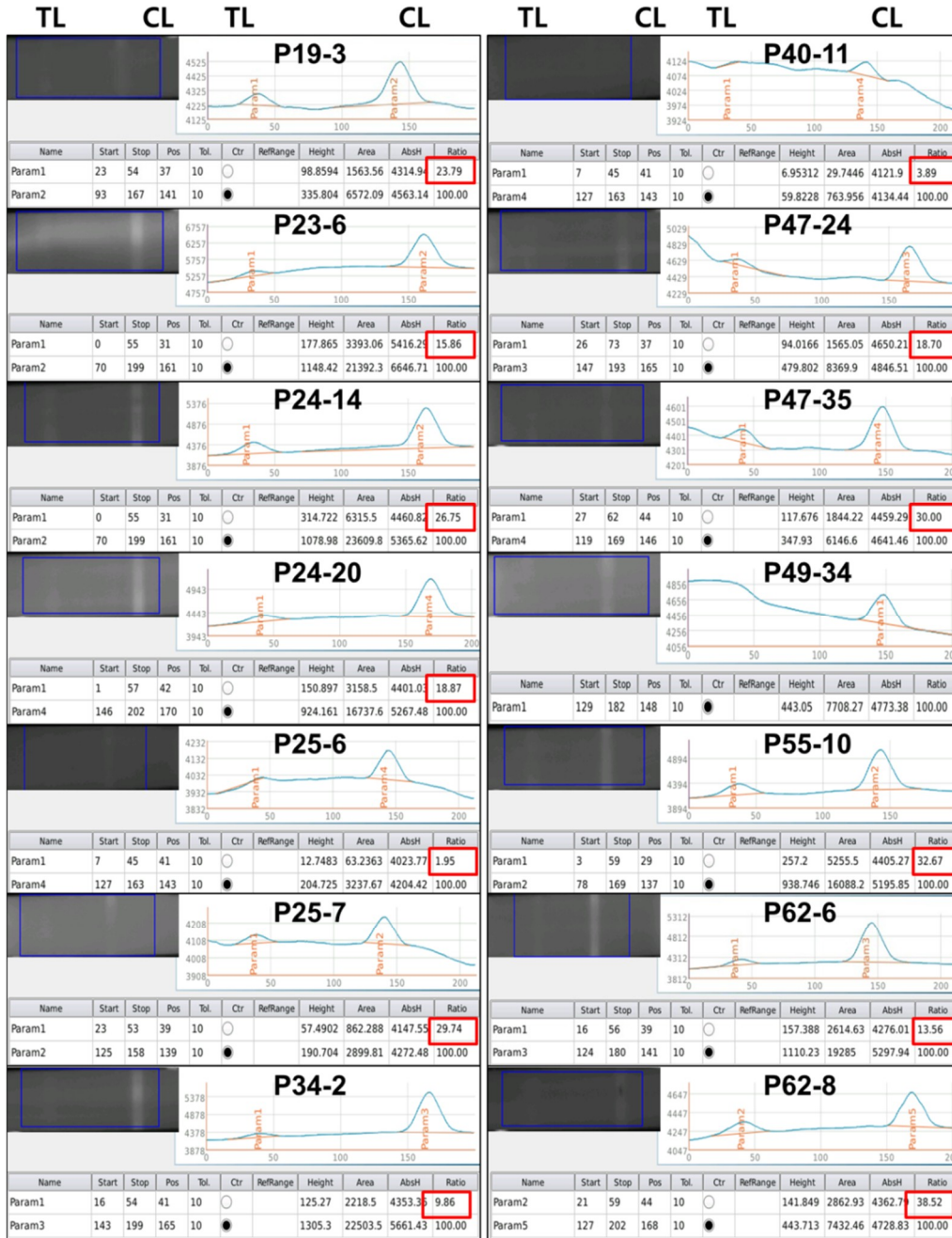


B









TL	CL	TL	CL	TL	CL	TL	CL			
Name	Start	Stop	Pos	Tol.	Ctrl	RefRange	Height	Area	AbsH	Ratio
Param2	21	59	44	10	○		105.141	2359.44	4599.66	22.40
Param5	127	202	168	10	●		591.156	10534.7	5232.89	100.00
Name	Start	Stop	Pos	Tol.	Ctrl	RefRange	Height	Area	AbsH	Ratio
Param1	3	59	29	10	○		220.591	4497.2	4410.63	28.63
Param2	78	169	137	10	●		819.92	15706.9	5058.02	100.00
Name	Start	Stop	Pos	Tol.	Ctrl	RefRange	Height	Area	AbsH	Ratio
Param1	3	59	29	10	○		463.038	9489.51	4585.5	63.31
Param2	78	169	137	10	●		806.971	14990.1	5066.22	100.00
Name	Start	Stop	Pos	Tol.	Ctrl	RefRange	Height	Area	AbsH	Ratio
Param1	6	59	41	10	○		146.805	2898.14	4399.4	28.55
Param4	148	199	169	10	●		594.253	10152.3	4984.24	100.00
Name	Start	Stop	Pos	Tol.	Ctrl	RefRange	Height	Area	AbsH	Ratio
Param2	21	59	44	10	○		114.315	2143.24	4525.36	9.22
Param5	127	202	168	10	●		1257.11	23247.1	5688.35	100.00
Name	Start	Stop	Pos	Tol.	Ctrl	RefRange	Height	Area	AbsH	Ratio
Param1	24	54	39	10	○		60.0083	1065.58	4112.34	14.92
Param5	104	212	141	10	●		223.407	7142.11	4289.82	100.00
Name	Start	Stop	Pos	Tol.	Ctrl	RefRange	Height	Area	AbsH	Ratio
Param1	27	62	44	10	○		143.615	2316.01	4490.3	17.82
Param4	119	169	146	10	●		706	12999.1	4967.81	100.00
Name	Start	Stop	Pos	Tol.	Ctrl	RefRange	Height	Area	AbsH	Ratio
Param1	0	55	31	10	○		154.02	2903.29	4257.58	24.15
Param2	70	199	161	10	●		701.965	12024.3	4982.99	100.00
Name	Start	Stop	Pos	Tol.	Ctrl	RefRange	Height	Area	AbsH	Ratio
Param1	16	54	41	10	○		162.787	3127.3	4234.93	18.61
Param3	143	199	165	10	●		952.218	16805.3	5223.91	100.00
Name	Start	Stop	Pos	Tol.	Ctrl	RefRange	Height	Area	AbsH	Ratio
Param1	16	56	39	10	○		3321.75	62927.1	8416.54	156.92
Param3	124	180	141	10	●		2141.46	40101.9	6847.14	100.00
Name	Start	Stop	Pos	Tol.	Ctrl	RefRange	Height	Area	AbsH	Ratio
Param2	21	59	44	10	○		189.735	4309.38	4500.31	14.37
Param5	127	202	168	10	●		1684.24	29988.7	6063.91	100.00
Name	Start	Stop	Pos	Tol.	Ctrl	RefRange	Height	Area	AbsH	Ratio
Param1	16	49	41	10	○		27.5598	217.371	4057.05	4.52
Param4	149	212	171	10	●		270.973	4814.33	4266.86	100.00
Name	Start	Stop	Pos	Tol.	Ctrl	RefRange	Height	Area	AbsH	Ratio
Param1	16	62	40	10	○		230.479	4494.57	4407.32	42.32
Param3	124	202	144	10	●		634.766	10620.1	4874.97	100.00
Name	Start	Stop	Pos	Tol.	Ctrl	RefRange	Height	Area	AbsH	Ratio
Param1	26	73	37	10	○		109.585	2375.34	4402.85	20.06
Param3	147	193	165	10	●		654.343	11843.4	5068.74	100.00

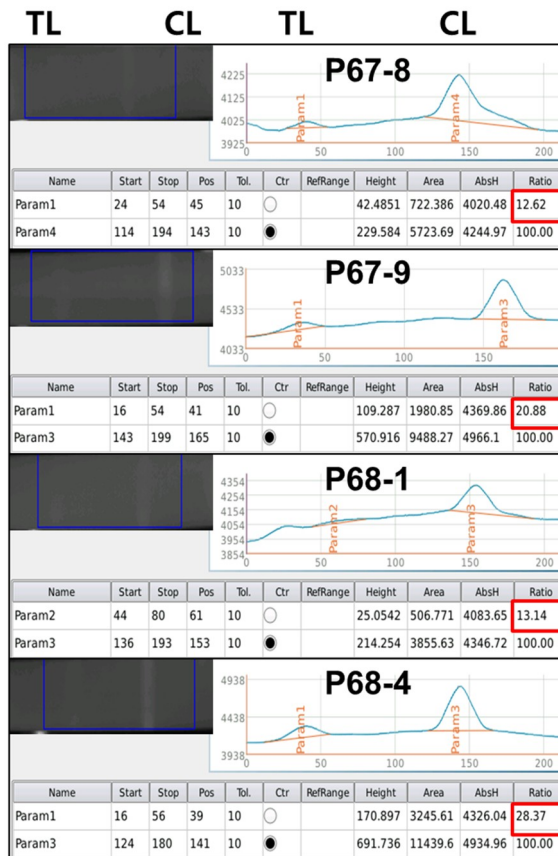


Figure S4. Raw data of FICT assay with clinical patients. RSV-negative patients (A) and RSV-positive patients (B).