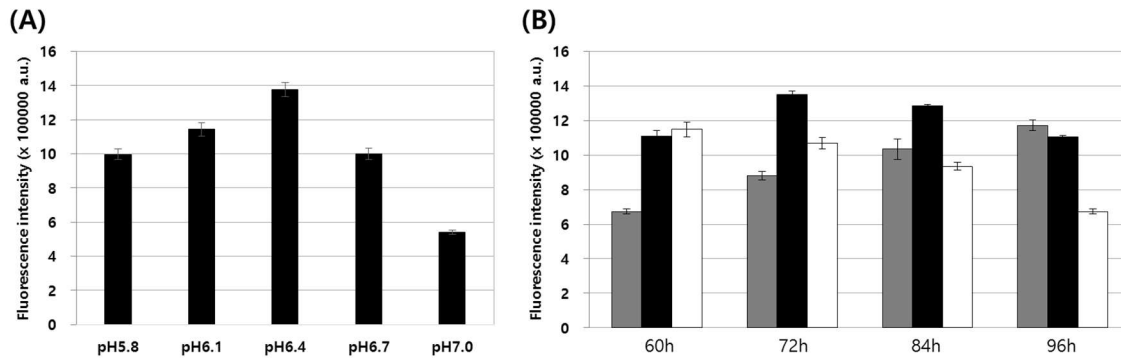
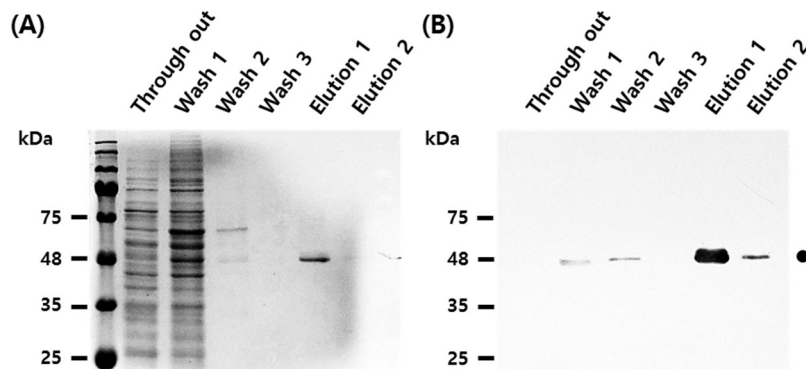


## Supplementary Data



**Figure S1. Fluorescence intensity of recombinant EGFP according to the pH and temperature in cell culture conditions.** Bm5 cells were maintained at various pH (A) and temperature (B) conditions and were infected with 5 MOI of rBm-His-SspDnaB-EGFP. Virus-infected cells were harvested and the fluorescence intensity of the cell extracts was measured using a fluorescence spectrometer with an excitation filter of 450 nm and emission filter of 510 nm. Under the various pH conditions, the temperature was adjusted to 27 °C and cells were harvested at 72 h.p.i. The pH was adjusted to 6.4 when the culture temperatures were changed to 24 °C (gray), 27 °C (black) and 30 °C (white). The bars indicate the mean  $\pm$  SE (n=3).



**Figure S2. Purification of His6-SspDnaB-EGFP using His tag affinity column.** Bm5 cells infected with rBm- His6-SspDnaB-EGFP at 5 MOI, 60 h.p.i were lysed on ice using RIPA Buffer (without EDTA). Total cell lysate was passed through a His tag affinity column (elpisbio, Deajeon, Republic of Korea) according to the manufacturer's manual and the fractions were collected. The collected fractions were loaded on a 12% SDS-PAGE gel (A). Western blot analysis against EGFP was then performed using GFP monoclonal antibody (B). The black circle represents the fusion-expressed EGFP with His6 and the Ssp DnaB mini-intein.