

Chemotherapeutic Efficacy of Implantable Antineoplastic-Treatment Protocols in an Optimal Mouse Model for Human Ovarian Carcinoma Cell Targeting

Jonathan M. Pantshwa ¹, Khadija Rhoda ¹, Sarah J. Clift ², Priyamvada Pradeep ¹, Yahya E. Choonara ¹, Pradeep Kumar ¹, Lisa C. du Toit ¹, Clement Penny ³ and Viness Pillay ^{1*}

¹Wits Advanced Drug Delivery Platform Research Unit, Department of Pharmacy and Pharmacology, Faculty of Health Sciences, School of Therapeutics Sciences, University of the Witwatersrand, Johannesburg, 7 York Road, Parktown 2193, South Africa; monwabisi.pantshwa@wits.ac.za (J.M.P.); khadija.rhoda@students.wits.ac.za (K.R.); priyamvada.pradeep@wits.ac.za (P.P.); yahya.choonara@wits.ac.za (Y.E.C.); pradeep.kumar@wits.ac.za (P.K.); lisa.dutoit@wits.ac.za (L.C.d.T.)

²Department of Paraclinical Sciences, Faculty of Veterinary Science, University of Pretoria, Onderstepoort, South Africa; sarah.clift@up.ac.za (S.J.C.);

³ Department of Medical Oncology, Division of Oncology, Faculty of Health Sciences, University of the Witwatersrand, Johannesburg, 7 York Road, Parktown,2193, South Africa; clement.penny@wits.ac.za (C.P.)

*Correspondence: viness.pillay@wits.ac.za; Tel.: +27-11-717-2274

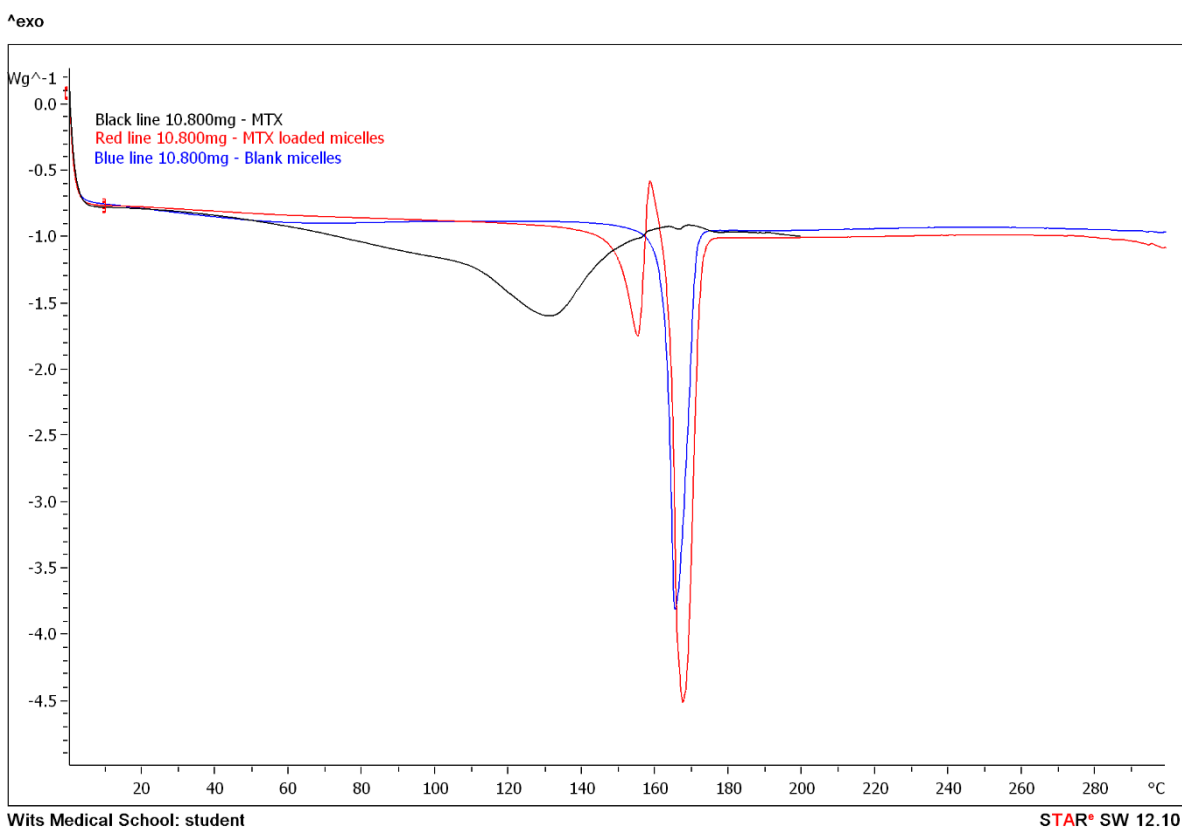


Figure S1. DSC thermograms of pure MTX (black graph), blank micelle nanoformulation (blue graph), MTX-loaded micelle formulation (red graph) demonstrating temperature variations and shifts in the curves.

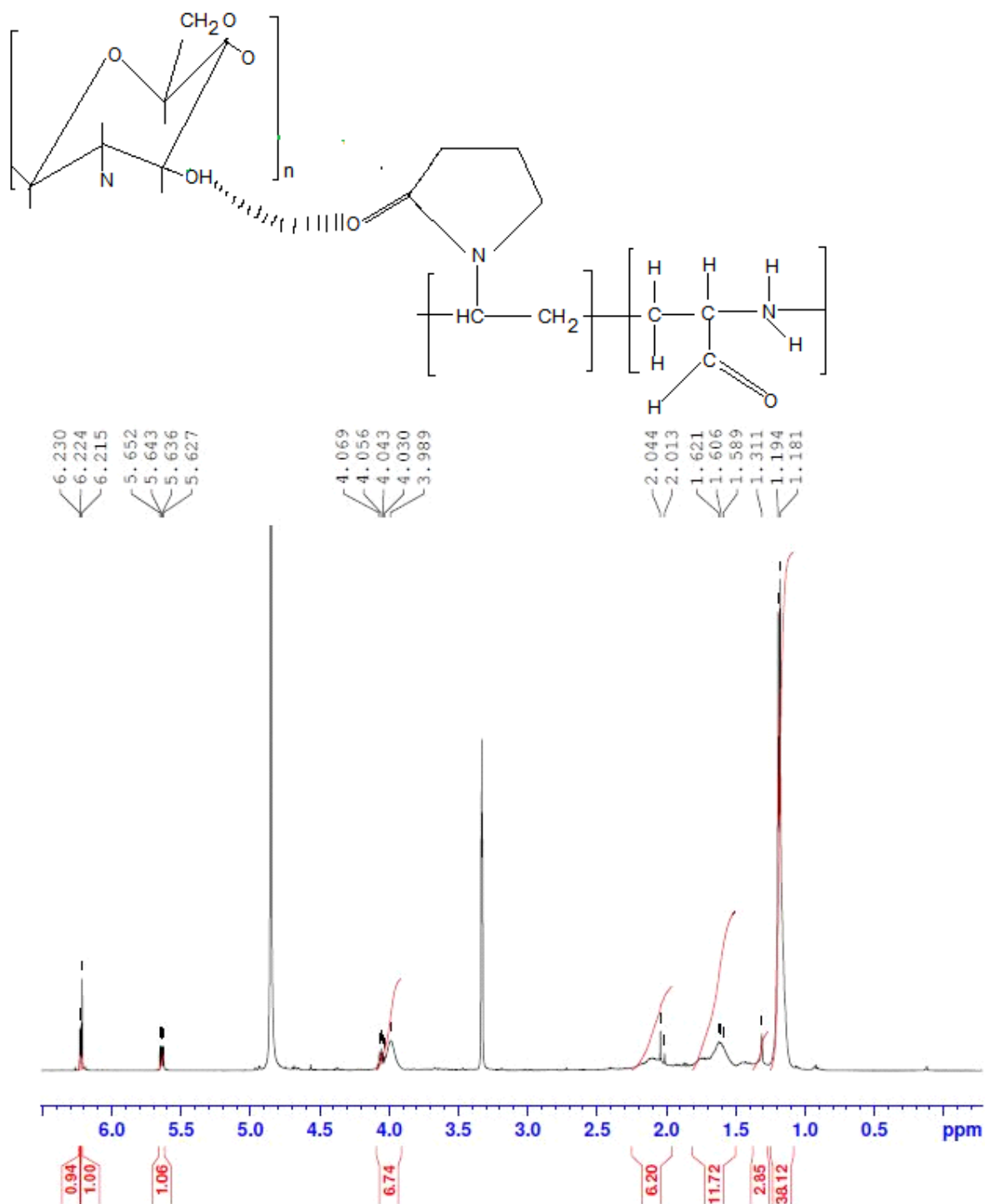


Figure S2: ¹H NMR spectra of CHT-PVP-PNIPAAm hydrogel in D₂O and crest peak assignment affirmative to the synthesized composite C-P-N structure.

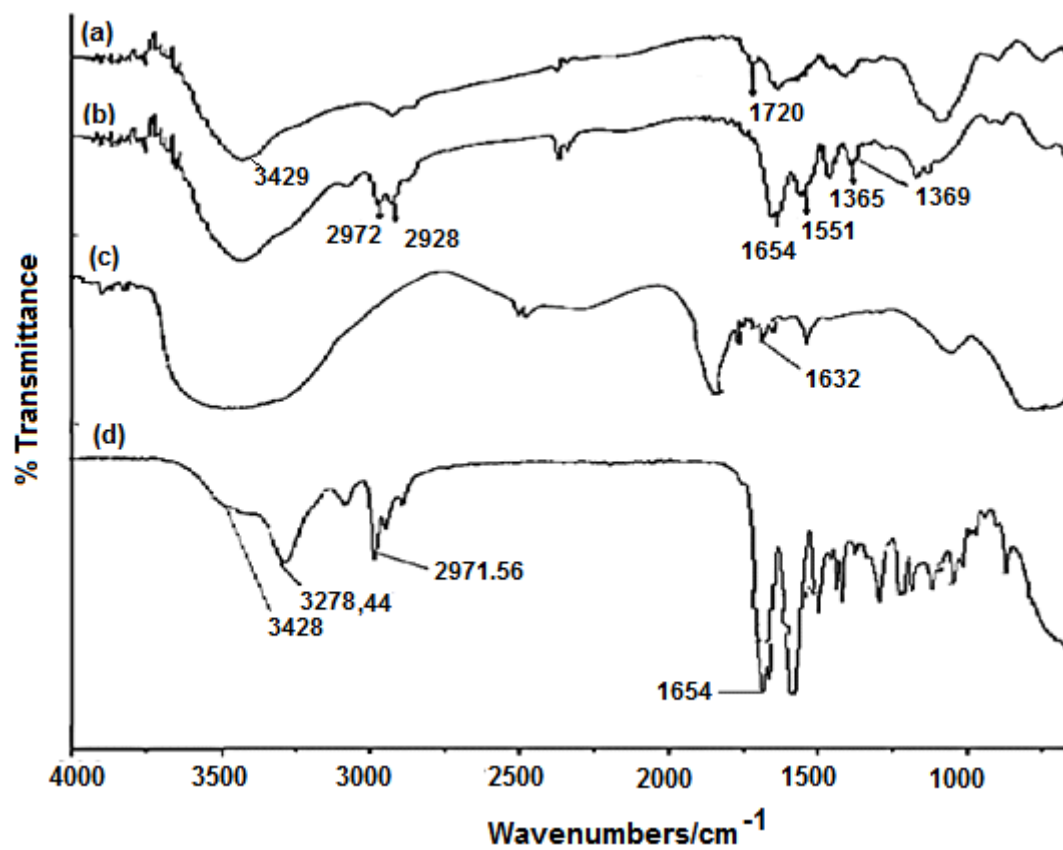


Figure S3: Vibrational-Spectroscopy-FTIR of Chitosan (a), PNIPAAm (b), PVP (c) and combinational CHT-PVP-PNIPAAm hydrogel (d).

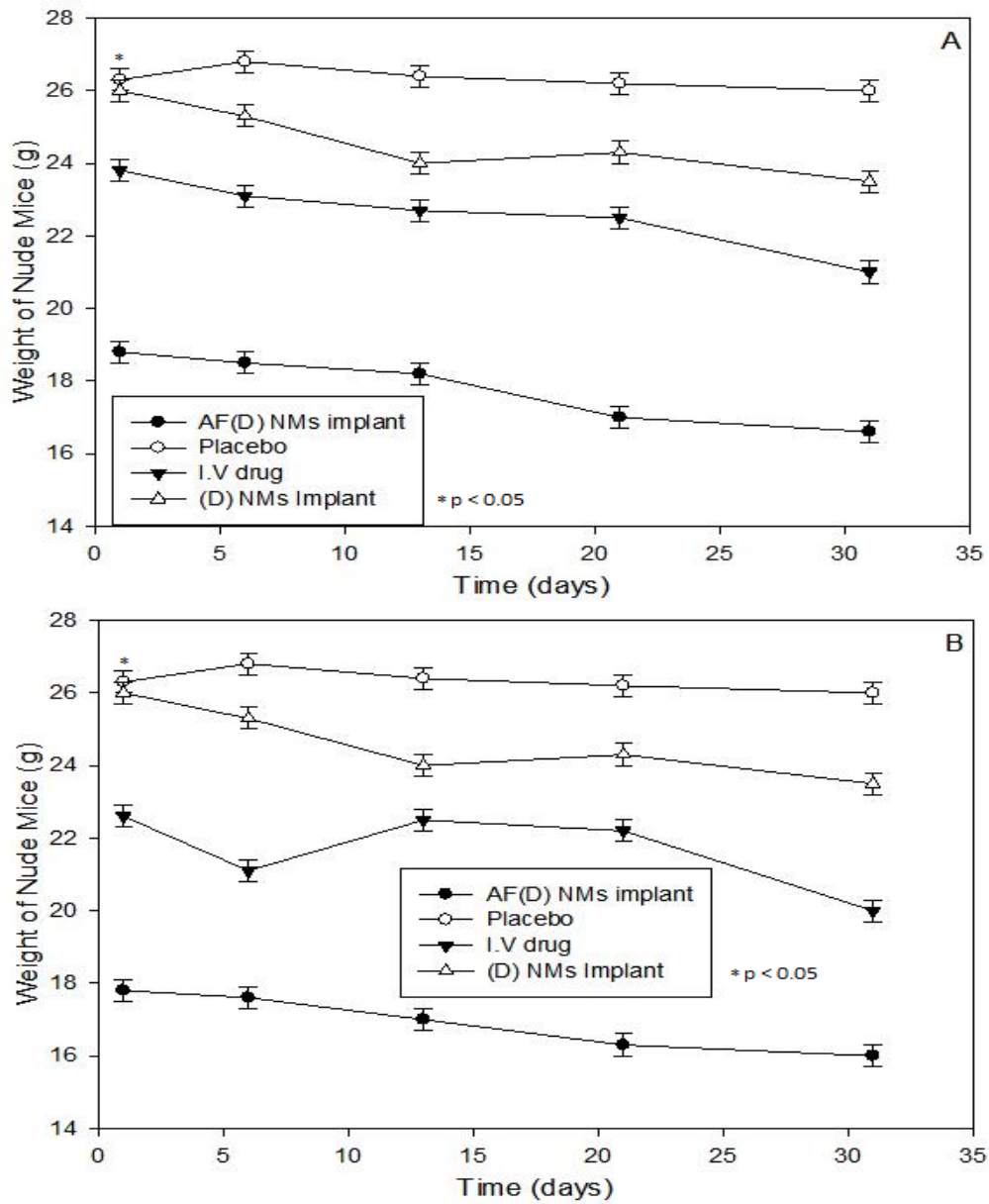


Figure S4. Nude mice average body weight curves illustrating chemotherapeutic efficacy in the 3 treatments and control (placebo) group. A refers to the methotrexate- and B the cisplatin-loaded PNIPAAm-b-PASP nanomicelle implant delivery system in NIH:OVCAR-5 EOC-bearing nude mice. Each point depicts mean (n=10/group); bar, \pm SD. *: $p < 0.05$ by t-test.