

PMA inhibits endothelial cell migration through activating the PKC- δ /Syk/NF- κ B-mediated up-regulation of Thy-1

Heng-Ching Wen¹, Yen Nien Huo¹, Chih-Ming Chou², Wen-Sen Lee^{1,3,4*}

¹Graduate Institute of Medical Sciences, College of Medicine, Taipei Medical University, Taipei 110, Taiwan

Departments of ²Biochemistry and Molecular Cell Biology and ³Physiology, School of Medicine, College of Medicine, Taipei Medical University, Taipei 110, Taiwan

⁴Cancer Research Center, Taipei Medical University Hospital, Taipei 110, Taiwan

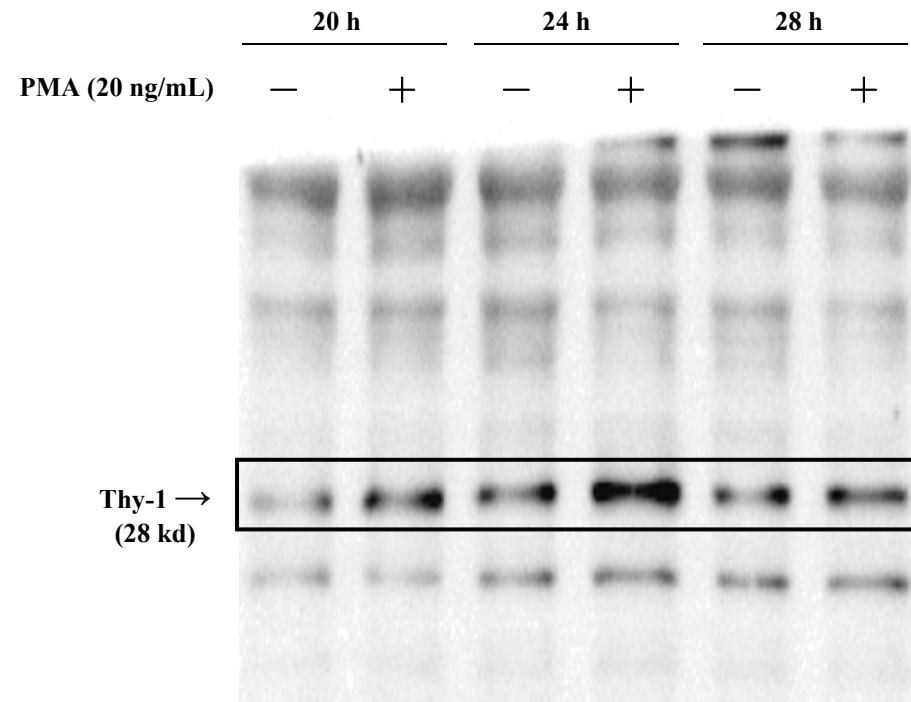


Fig. S1. The entire gel picture of Fig. 1 in the text. Corresponding to Fig. 1B. The cropping line and the molecular weight of the protein were indicated.

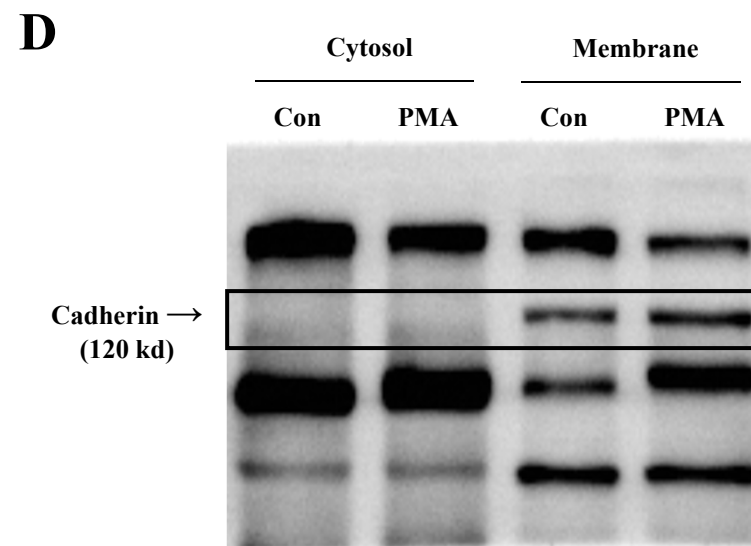
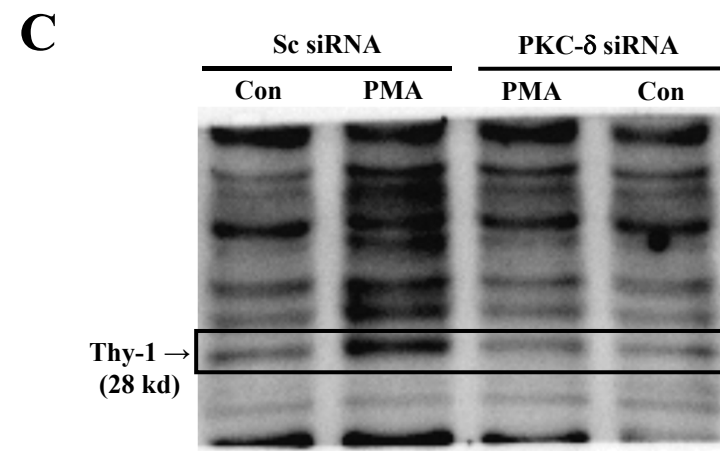
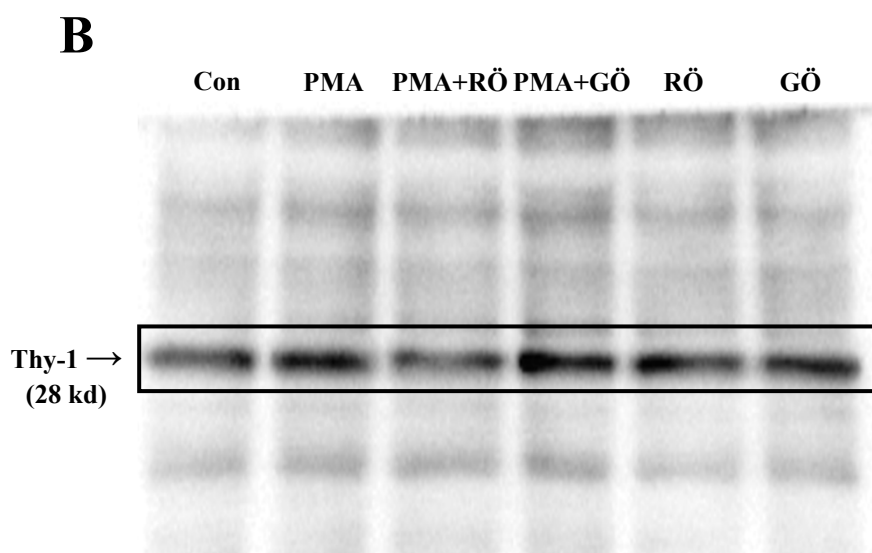
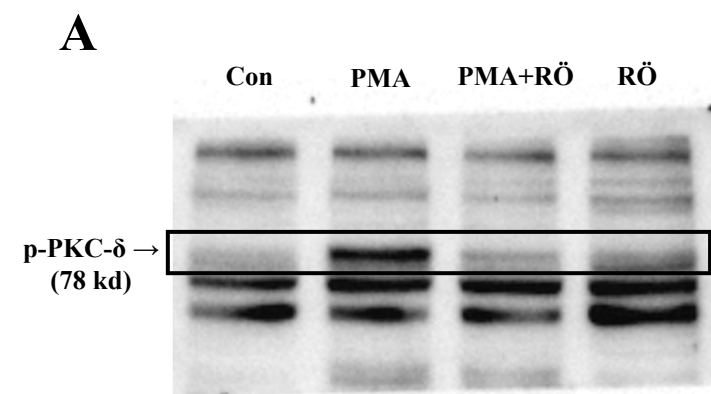


Fig. S2. The entire gel pictures of Fig. 2 in the text. (A) Corresponding to Fig. 2A. (B) Corresponding to Fig. 2B. (C) Corresponding to Fig. 2C (right panel). (D) Corresponding to Fig. 2D (top panel). The cropping lines and the molecular weight of each protein were indicated.

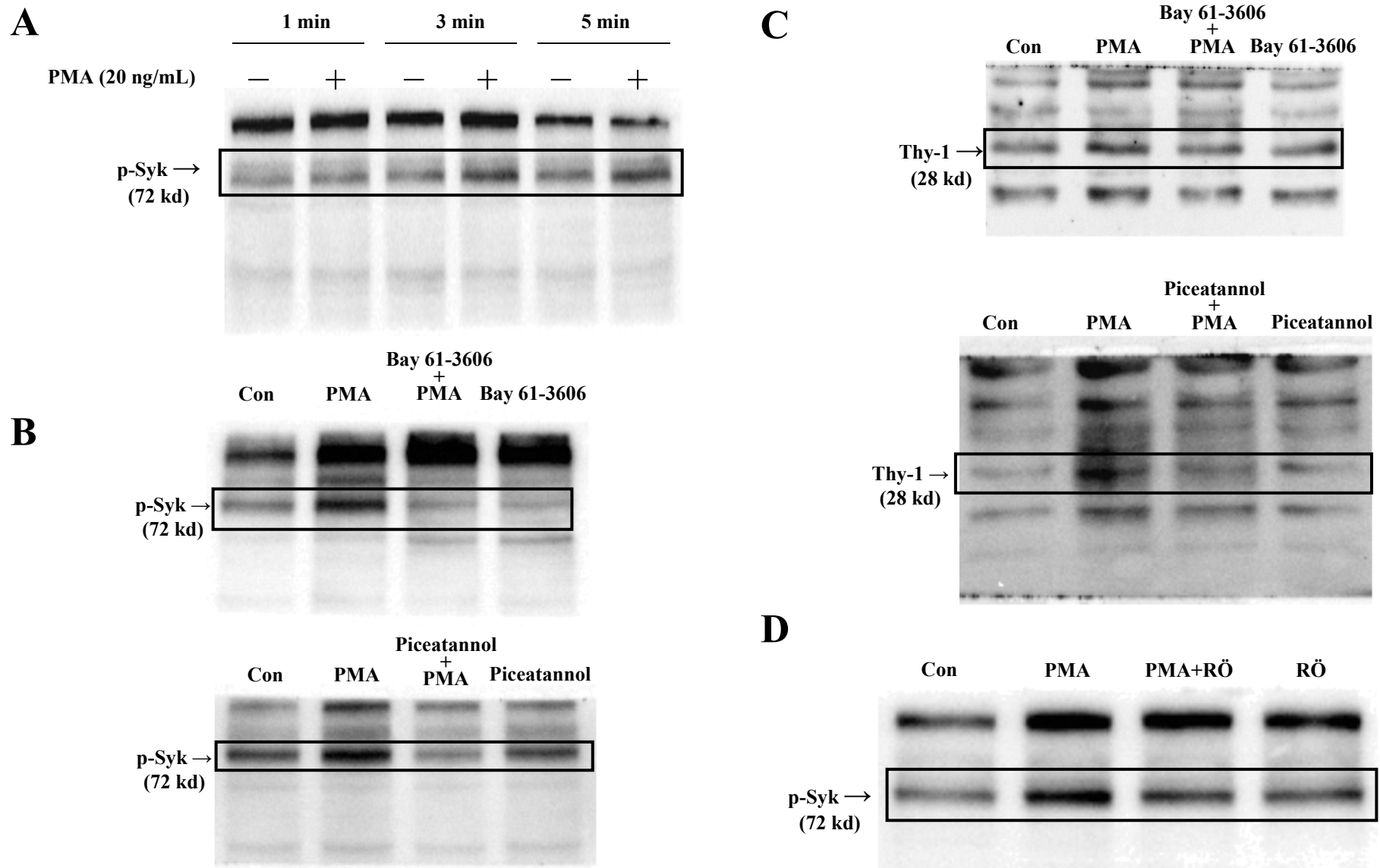


Fig. S3. The entire gel pictures of Fig. 3 in the text. (A) Corresponding to Fig. 3A. (B) Corresponding to Fig. 3B. (C) Corresponding to Fig. 3C. (D) Corresponding to Fig. 3E. The cropping lines and the molecular weight of each protein were indicated.

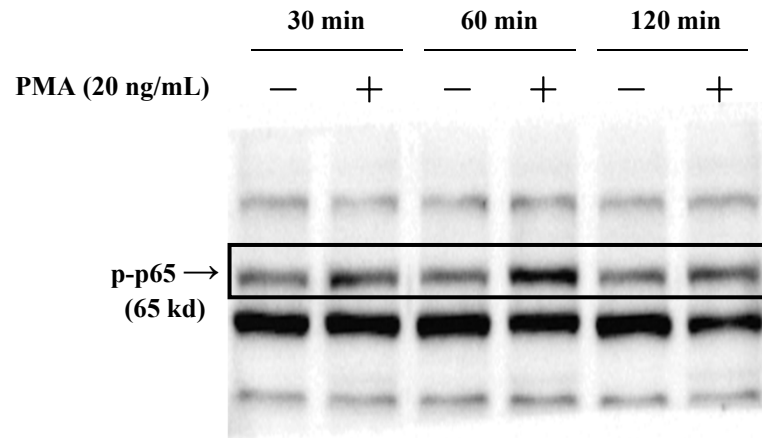
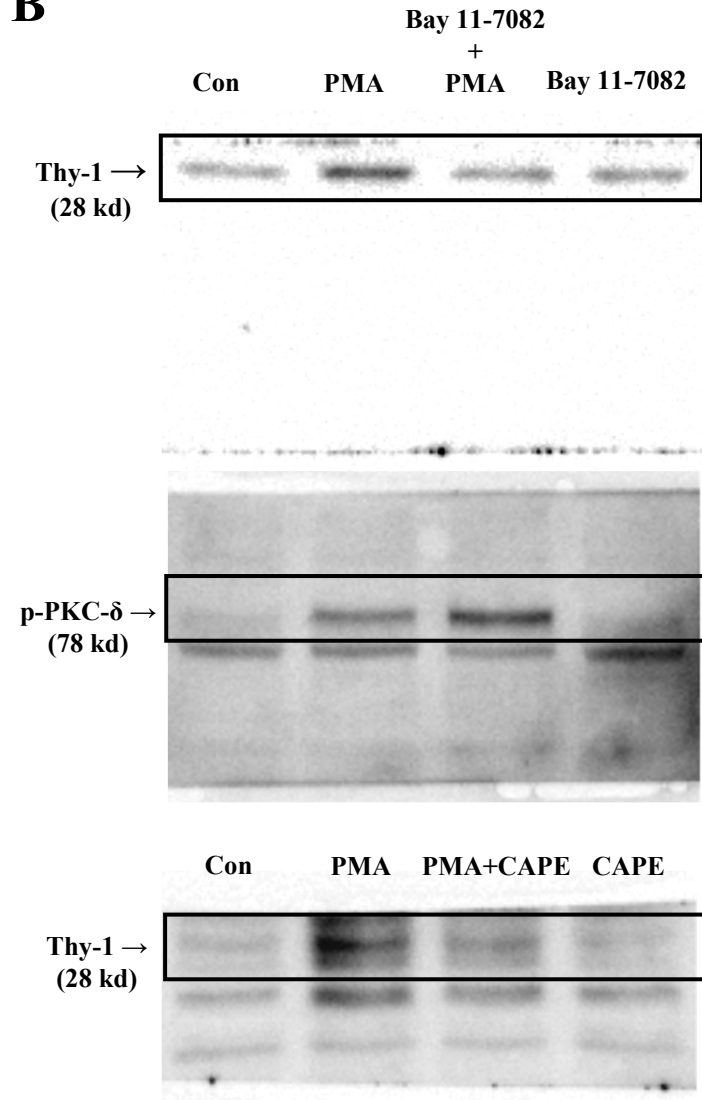
A**B**

Fig. S4. The entire gel pictures of Fig. 4 in the text. (A) Corresponding to Fig. 4A. (B) Corresponding to Fig. 4E. The cropping lines and the molecular weight of each protein were indicated.

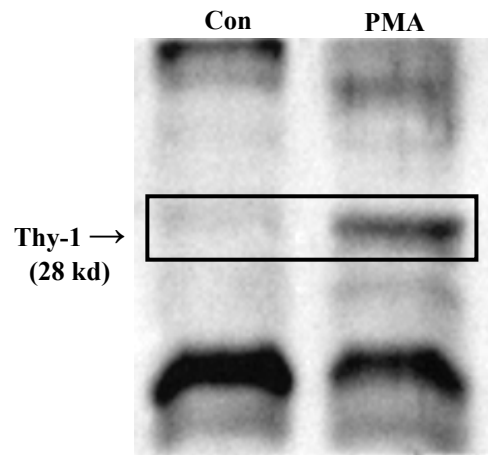


Fig. S5. The entire gel picture of Fig. 5 in the text. Corresponding to Fig. 5B. The cropping line and the molecular weight of the protein were indicated.

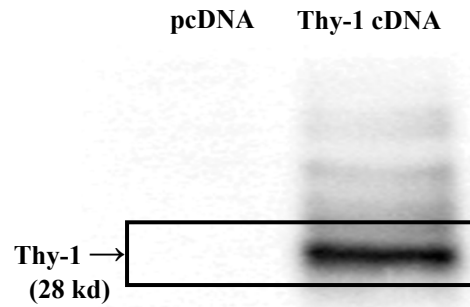


Fig. S6. The entire gel picture of Fig. 6B in the text. Corresponding to Fig. 6B. The cropping line and the molecular weight of the protein were indicated.