

Figure S1

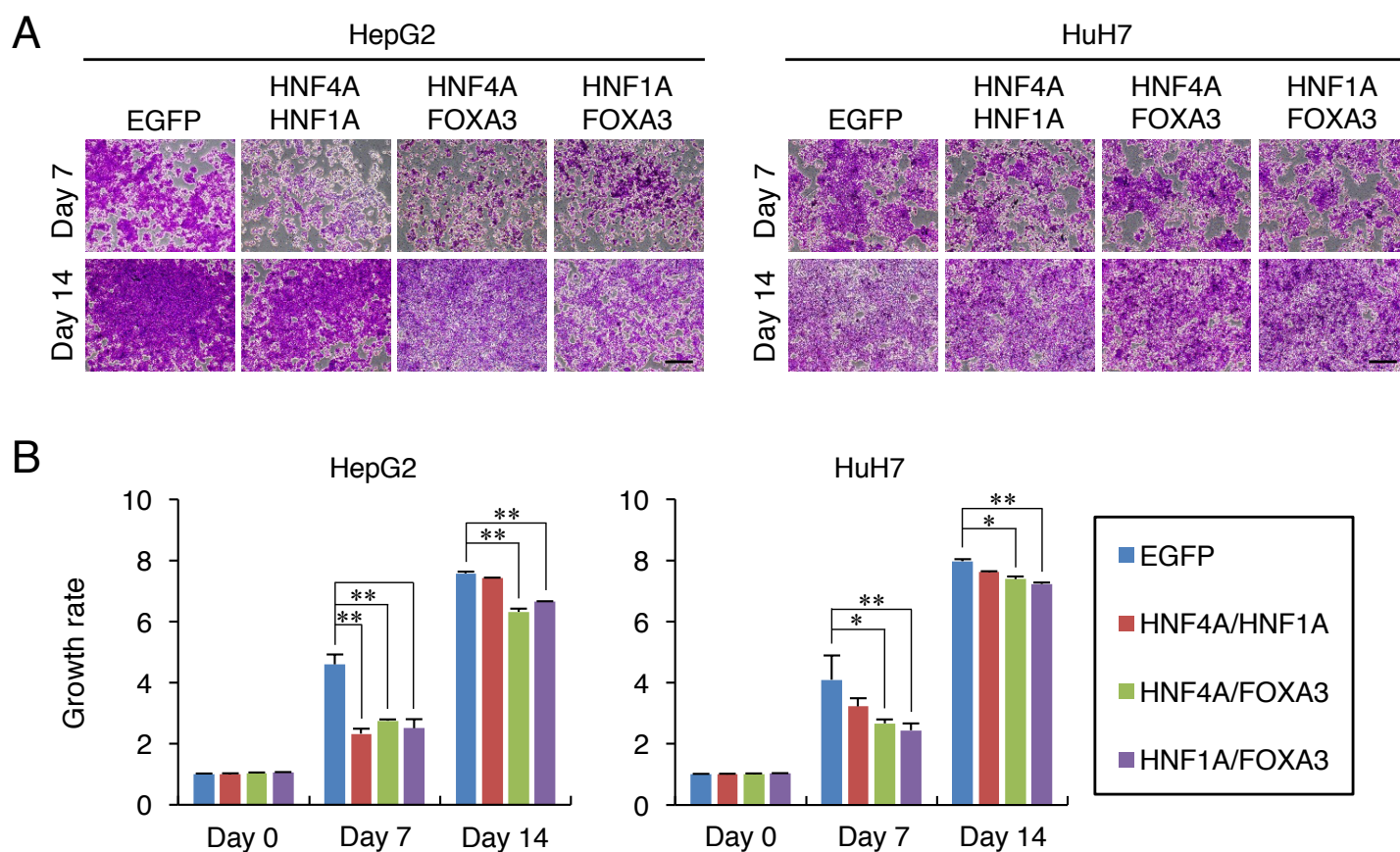


Figure S1. Combinatorial transduction of pairs of the three TFs is insufficient for long-term inhibition of cell growth similar to single transduction of the TFs. (A) Microscopic analysis of HepG2 (left panels) and HuH7 (right panels) cells with combinatorial transduction of pairs of the three TFs or control EGFP stained with crystal violet at days 7 and 14 after transduction. Scale bars: 100 μ m. (B) WST-8 proliferation assays of HepG2 (left bar plots) and HuH7 (right bar plots) cells with combinatorial transduction of pairs of the three TFs or control EGFP. The growth rate was calculated as the relative ratio of absorbance at 450 nm of the TF-transduced cells to that of EGFP-transduced cells at day 0 after transduction. Data represent means \pm SD ($n = 3$). * $P < 0.05$, ** $P < 0.01$.