

Figure S2

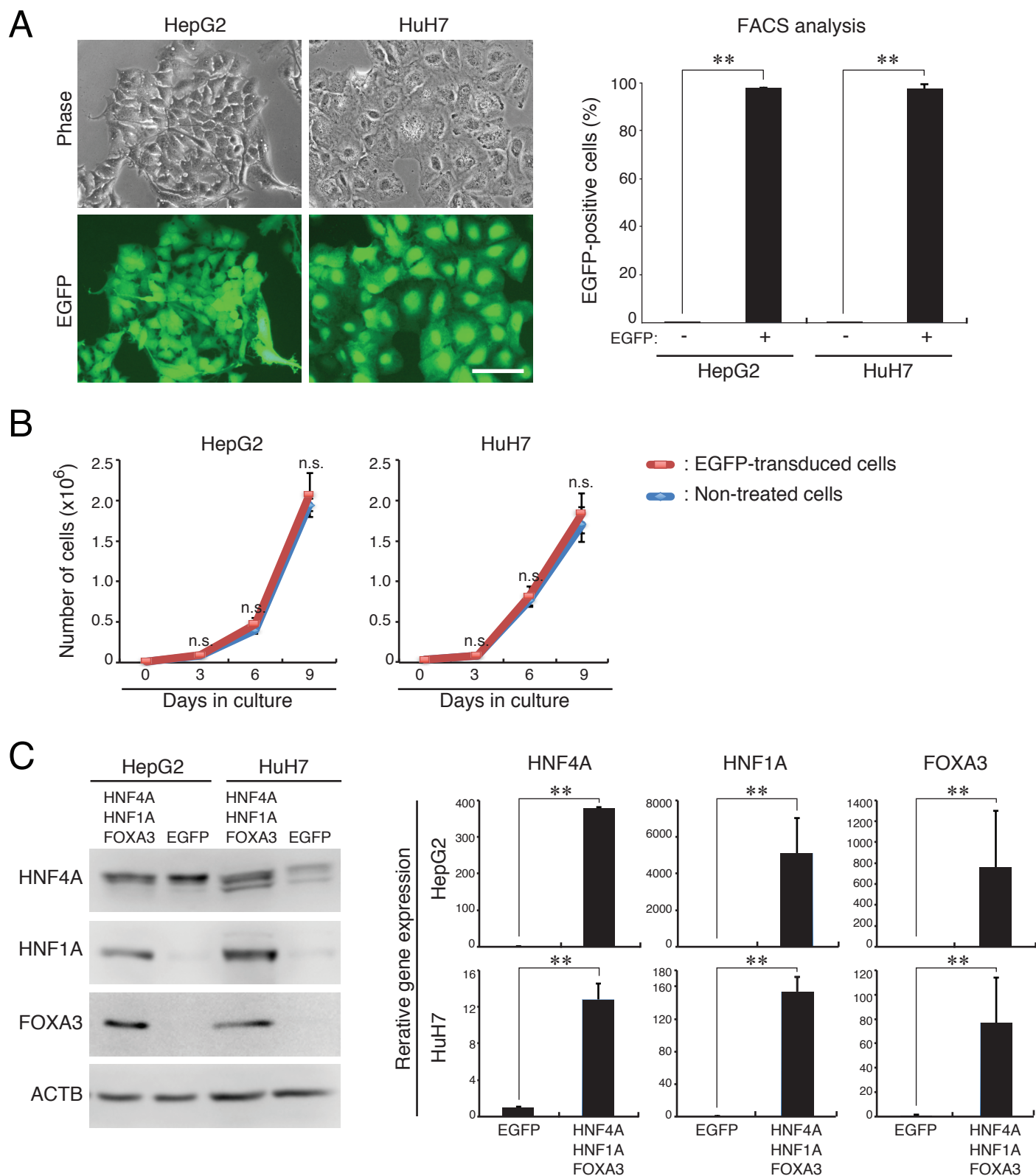


Figure S2. Detailed analysis for HCC cell lines after retroviral transduction. (A) Retroviral transduction efficiency of HepG2 and HuH7 cells was evaluated using a fluorescence microscopy (left panels) and FACS (right bar plots) at day 3 after infection with a retrovirus expressing EGFP. Scale bar: 100 μ m. Data represent means \pm SD ($n = 3$). $**P < 0.01$. (B) The number of cells in cultures of HepG2 and HuH7 cells with or without transduction of EGFP were counted. Data represent means \pm SD ($n = 3$). n.s.: not significant. (C) Western blot analyses (left panels) and RT-qPCR analyses (right bar plots) were conducted for HepG2 and HuH7 cells at day 7 after transduction of the three TFs (HNF4A, HNF1A, and FOXA3) or EGFP. ACTB was used for normalization in western blot analyses. All data obtained from RT-qPCR analyses were normalized by the values for EGFP-expressing HepG2 or HuH7 cells and the fold differences are shown. Data represent means \pm SD ($n = 3$). $**P < 0.01$.