

Figure S3

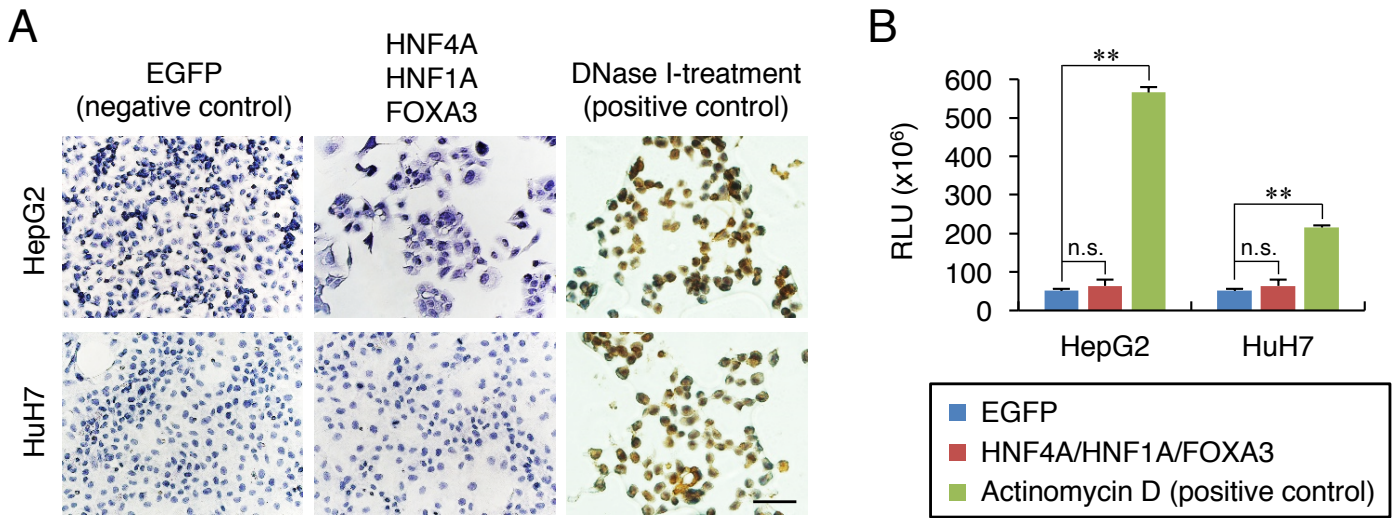


Figure S3. Decreases in cell growth of HCC cells after combinatorial transduction of the three TFs (HNF4A, HNF1A, and FOXA3) is not caused by apoptosis. (A) TUNEL staining of HepG2 (upper panels) and HuH7 (lower panels) cells. The cells were counterstained with hematoxylin. Scale bar: 100 μm . (B) Caspase-Glo-3/7 assays in HepG2 and HuH7 cells. RLU: relative luminescence units. Data represent means \pm SD ($n = 3$). ** $P < 0.01$. n.s., not significant.