

Supplemental Information

Untargeted Proteomics - Mass Spectrometry Analysis

In gel digestion/Sample preparation

hNPCs CM was firstly concentrated (100X) using a 5 kDA cut-off concentrator (Vivaspin, GE Healthcare, Little Chalfont, UK. http://www3.gehealthcare.com/en/global_gateway) by ultracentrifugation at 3000 g during 45 min. For this purpose, the samples were precipitated using the Trichloroacetic acid - Acetone procedure (TCA). TCA was added to each sample to a final concentration of 20% (v/v), followed by 30 minutes of incubation at -80°C and centrifugation at 20 000 g for 20 min. Protein pellets were washed with ice-cold (-20°C) acetone. Briefly, the pellets were solubilized in acetone, aided by ultrasonication, followed by a centrifugation at 20 000 g for 20 min. The washed pellets were resuspended in 40 µL 2X Laemmli buffer (BioRad), aided by ultrasonication and denaturation at 95°C, and 10 µL of each replicate were used to create a pooled sample for protein identification.

After denaturation, the replicates and pooled sample were alkylated with acrylamide and subjected in gel digestion by using the short-GeLC approach [1]. Briefly, the entire sample was loaded in a “4–20% TGX Stain-Free Gel” (Bio-Rad) and subjected to a partially electrophoretic separation: 15 min at 110 V to allow the samples to enter into the gel. After SDS-PAGE proteins were visualized with Colloidal Coomassie Blue. The staining was performed as previously described [2] with slight modifications [3]. The entire lanes were sliced into three parts and each part was sliced in small pieces and processed. Gel pieces were destained using the destaining solution (50 mM ammonium bicarbonate and 30% acetonitrile) following by a washing step with water. Gel pieces were dehydrated on Concentrador Plus/Vacufug Plus (Eppendorf, Hamburg, Germany. <https://www.eppendorf.com/OC-en/>). Then, were added 75 µL of trypsin (0.01 µg/µL solution in 10 mM ammonium bicarbonate) to the dried gel bands and left for 15 min on ice to rehydrate de gel pieces. After this period, 30 µL of 10 mM ammonium bicarbonate were added and in-gel digestion was performed overnight in the dark at RT. After the digestion, the excess solution from gel pieces were collected to a low binding microcentrifuge tube (LoBind, Eppendorf) and peptides were extracted from the gel pieces by sequential addition of three solutions of acetonitrile (ACN) in 1%

formic acid (FA) (30%, 50%, and 98% of ACN, respectively). After the addition of each solution, the tubes were shaken in the thermomixer (Eppendorf) at 1050 rpm for 15 min and the solution was collected to the tube containing the previous fraction. At this stage, the peptides extracted from the three fraction of each replicate sample were combined into a single sample for quantitative analysis. All the peptides mixtures were dried (preferentially not completely) by rotary evaporation under vacuum. Before performing the liquid chromatography coupled with tandem mass spectrometry analysis (LC-MS/MS), the peptide mixtures were subjected to SPE using OMIX tips with C18 stationary phase (Agilent Technologies, Santa Clara, CA, USA. <http://www.agilent.com/home>) as recommended by the manufacture. Eluates were dried by rotator evaporation, avoiding to totally evaporate the samples and peptides mixtures were resuspended in 20 μ L solution of 2% ACN and 0.1% FA followed by vortex, spin and sonication in water bath [2 min with pulses of 1-1 s sonication followed by 1 s break pulse, at 20% intensity, in a sonicator VibraCell 750 watts (Sonics&Materials, Newtown, CT, USA. <http://www.sonics.com/>)]. In order to remove insoluble material the peptide mixture were then centrifuged for 5 min at 14 000 g and collected into the proper vial for LC-MS injection.

Sequential Window Acquisition of All Theoretical Mass Spectra (SWATH) Acquisition

Samples were analyzed on a Triple TOF 5600 System (Sciex) in two phases: information-dependent acquisition (IDA) of the pooled sample and SWATH (Sequential Windowed data independent Acquisition of the Total High-resolution Mass Spectra) acquisition of each individual sample. Peptides were resolved by LC (nanoLC Ultra 2D, Eksigent, Dublin, CA, USA. <http://www.eksigentllc.com/>) on a Micro LC column ChromXP C18CL (300 μ m ID \times 15cm length, 3 μ m particles, 120 \AA pore size; Eksigent) at 5 μ L/min with a multistep gradient: 0-2 min linear gradient from 5 to 10 %, 2-45 min linear gradient from 10 % to 30 % and, 45-46 min to 35 % of acetonitrile in 0.1 % FA. Peptides were eluted into the mass spectrometer using an electrospray ionization source (DuoSpray Source, Sciex) with a 50 μ m internal diameter (ID) stainless steel emitter (New Objective, Ringoes, NJ, USA. <http://www.sisweb.com/contact.htm>). IDA experiments were performed for each 3 peptides mixtures of the pooled sample. The mass spectrometer was set to scanning full spectra of ions

(350-1250 m/z range) for 250 ms, followed by up to 100 MS/MS scans (100–1500 m/z from a dynamic accumulation time - minimum 30 ms for precursor above the intensity threshold of 1000, to maintain a cycle time of 3.3 s). Candidate ions with a charge state between +2 and +5 and counts above a minimum threshold of 10 counts per second were isolated for fragmentation and one MS/MS spectra was collected before adding those ions to the exclusion list for 25 seconds (mass spectrometer operated by Analyst TF 1.7, Sciex). Rolling collision was used with a collision energy spread of 5 eV. Peptide identification and library generation were performed with Protein Pilot software (Sciex, v5.1), using the following parameters: i) search against a database composed by *Homo Sapiens* from SwissProt (release at April 2016), and *malE*-GFP; ii) acrylamide alkylated cysteines as fixed modification and iii) trypsin as digestion type. An independent False Discovery Rate (FDR) analysis using the target-decoy approach provided with Protein Pilot software was used to assess the quality of the identifications and positive identifications were considered when identified proteins and peptides reached a 5% local FDR.

For SWATH-MS based experiments, the mass spectrometer was operated in a looped product ion mode [4] and the same chromatographic conditions used as in the IDA run described above. The SWATH-MS setup was designed specifically for the samples to be analyzed, in order to adapt the SWATH windows to the complexity of the set of samples to be analyzed. A set of 60 windows of variable width (containing 1 m/z for the window overlap) was constructed covering the precursor mass range of 350-1250 m/z (Table S1). A 250 ms survey scan (350-1250 m/z) was acquired at the beginning of each cycle for instrument calibration and SWATH-MS spectra were collected from 100–1500 m/z for 50 ms, resulting in a cycle time of 3.25 s from the precursors ranging from 350 to 1250 m/z. The collision energy for each window was determined according to the calculation for a charge +2 ion centered upon the window with variable collision energy spread (CES) according with the window.

A specific library of precursor masses and fragment ions was created by combining all files from the IDA experiments, and used for subsequent SWATH processing. Libraries were obtained using Protein PilotTM software (Sciex, v5.1) with the same parameters as described above. Data processing was performed using SWATH processing plug-in for PeakView (Sciex, v2.0.01). Briefly,

peptides were selected automatically from the library using the following criteria: (i) the unique peptides for a specific targeted protein were ranked by the intensity of the precursor ion from the IDA analysis as estimated by the ProteinPilot software and (ii) Peptides that contained biological modifications and/or were shared between different protein entries/isoforms were excluded from selection. Up to 15 peptides were chosen per protein, and SWATH quantitation was attempted for all proteins in library file that were identified below 5% local FDR from ProteinPilot searches. In SWATH acquisition data peptides are confirmed by finding and scoring peak groups, which are a set of fragment ions for the peptide. Target fragment ions, up to 5, were automatically selected and peak groups were scored following the criteria previously described [5]. The chromatographic profiles of the target fragment ions of those peptides were extracted using an extracted-ion chromatogram (XIC) window of 4 minutes with 100 ppm XIC width, and the peak group confidence threshold was determined based on a FDR analysis using the target-decoy approach. Positive identification was considered for proteins with at least 1 peptide with a FDR below 1%.

Table S1. SWATH-MS method

	m/z range	Width (Da)	CES
Window 1	349.5-355	5.5	5
Window 2	354-360.9	6.9	5
Window 3	359.9-367.2	7.3	5
Window 4	366.2-372.5	6.3	5
Window 5	371.5-378.8	7.3	5
Window 6	377.8-385.1	7.3	5
Window 7	384.1-391.9	7.8	5
Window 8	390.9-398.6	7.7	5
Window 9	397.6-405.8	8.2	5
Window 10	404.8-413	8.2	5
Window 11	412-420.7	8.7	5

Window 12	419.7-428.3	8.6	5
Window 13	427.3-435.5	8.2	5
Window 14	434.5-443.2	8.7	5
Window 15	442.2-450.8	8.6	5
Window 16	449.8-458.9	9.1	5
Window 17	457.9-467	9.1	5
Window 18	466-475.1	9.1	5
Window 19	474.1-483.2	9.1	5
Window 20	482.2-491.3	9.1	5
Window 21	490.3-499	8.7	5
Window 22	498-506.6	8.6	5
Window 23	505.6-514.3	8.7	5
Window 24	513.3-521.9	8.6	5
Window 25	520.9-529.1	8.2	5
Window 26	528.1-536.8	8.7	5
Window 27	535.8-544.4	8.6	5
Window 28	543.4-552.1	8.7	5
Window 29	551.1-559.8	8.7	5
Window 30	558.8-567.4	8.6	5
Window 31	566.4-575.1	8.7	5
Window 32	574.1-583.2	9.1	5
Window 33	582.2-591.7	9.5	5
Window 34	590.7-600.3	9.6	5
Window 35	599.3-608.4	9.1	5
Window 36	607.4-616.9	9.5	5
Window 37	615.9-625.9	10	5
Window 38	624.9-634.9	10	5

Window 39	633.9-644.4	10.5	5
Window 40	643.4-654.3	10.9	5
Window 41	653.3-664.6	11.3	5
Window 42	663.6-675.4	11.8	5
Window 43	674.4-687.1	12.7	5
Window 44	686.1-700.2	14.1	5
Window 45	699.2-713.2	14	5
Window 46	712.2-725.4	13.2	5
Window 47	724.4-737.1	12.7	5
Window 48	736.1-750.1	14	5
Window 49	749.1-763.2	14.1	5
Window 50	762.2-777.1	14.9	5
Window 51	776.1-794.7	18.6	5
Window 52	793.7-812.7	19	8
Window 53	811.7-833.4	21.7	8
Window 54	832.4-856.8	24.4	8
Window 55	855.8-885.6	29.8	8
Window 56	884.6-921.1	36.5	8
Window 57	920.1-967.5	47.4	8
Window 58	966.5-1020.1	53.6	10
Window 59	1019.1-1102.9	83.8	10
Window 60	1101.9-1249.6	147.7	10

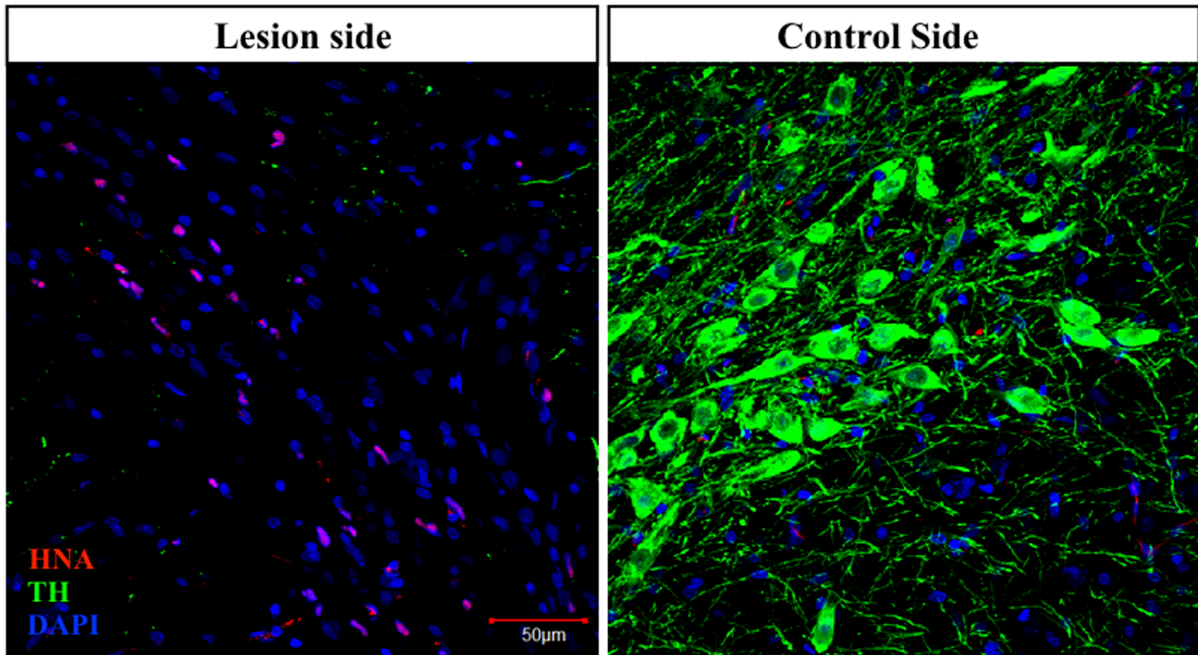


Figure S1. Confocal images depicting hNPCs (stained for HNA, in red). hNPCs were only able to survive in the SNpc of one animal, 8 weeks after transplantation. Abbreviations: hNPCs, human neural progenitor cells; HNA, human nuclear antigen; TH, tyrosine hydroxylase. (Scale bar: 50 µm).

Table S2. Total list of proteins identified in hNPCs secretome by combined MS approach

Accession Number	Accession Name	Protein name recommended_UNIPROT
P02751	FINC_HUMAN	Fibronectin
P02768	ALBU_HUMAN	Serum albumin
P08123	CO1A2_HUMAN	Collagen alpha-2(I) chain
P21333	FLNA_HUMAN	Filamin-A
P01023	A2MG_HUMAN	Alpha-2-macroglobulin
P08253	MMP2_HUMAN	72 kDa type IV collagenase
P12109	CO6A1_HUMAN	Collagen alpha-1(VI) chain
P02787	TRFE_HUMAN	Serotransferrin
Q15063	POSTN_HUMAN	Periostin
P08670	VIME_HUMAN	Vimentin
P49327	FAS_HUMAN	Fatty acid synthase
O43707	ACTN4_HUMAN	Alpha-actinin-4 {ECO:0000305}
Q00610	CLH1_HUMAN	Clathrin heavy chain 1
P12110	CO6A2_HUMAN	Collagen alpha-2(VI) chain
Q16555	DPYL2_HUMAN	Dihydropyrimidinase-related protein 2
P11142	HSP7C_HUMAN	Heat shock cognate 71 kDa protein
P14618	KPYM_HUMAN	Pyruvate kinase PKM
P29401	TKT_HUMAN	Transketolase
P30101	PDIA3_HUMAN	Protein disulfide-isomerase A3
P13639	EF2_HUMAN	Elongation factor 2
P07437	TBB5_HUMAN	Tubulin beta chain
P05121	PAI1_HUMAN	Plasminogen activator inhibitor 1
P06733	ENOA_HUMAN	Alpha-enolase
P55072	TERA_HUMAN	Transitional endoplasmic reticulum ATPase

P55786	PSA_HUMAN	Puromycin-sensitive aminopeptidase
P26038	MOES_HUMAN	Moesin
P02545	LMNA_HUMAN	Prelamin-A/C
Q71U36	TBA1A_HUMAN	Tubulin alpha-1A chain
P63261	ACTG_HUMAN	Actin, cytoplasmic 2
Q16658	FSCN1_HUMAN	Fascin
O94985	CSTN1_HUMAN	Calsyntenin-1
P31150	GDIA_HUMAN	Rab GDP dissociation inhibitor alpha
P07195	LDHB_HUMAN	L-lactate dehydrogenase B chain
P08238	HS90B_HUMAN	Heat shock protein HSP 90-beta
P11021	GRP78_HUMAN	78 kDa glucose-regulated protein
P12277	KCRB_HUMAN	Creatine kinase B-type
P22314	UBA1_HUMAN	Ubiquitin-like modifier-activating enzyme 1
O75874	IDHC_HUMAN	Isocitrate dehydrogenase [NADP] cytoplasmic
P00558	PGK1_HUMAN	Phosphoglycerate kinase 1
P52209	6PGD_HUMAN	6-phosphogluconate dehydrogenase, decarboxylating
P36955	PEDF_HUMAN	Pigment epithelium-derived factor
P09486	SPRC_HUMAN	SPARC
P60174	TPIS_HUMAN	Triosephosphate isomerase
P06744	G6PI_HUMAN	Glucose-6-phosphate isomerase
P62258	1433E_HUMAN	14-3-3 protein epsilon
Q16270	IBP7_HUMAN	Insulin-like growth factor-binding protein 7
P04406	G3P_HUMAN	Glyceraldehyde-3-phosphate dehydrogenase
P00338	LDHA_HUMAN	L-lactate dehydrogenase A chain
Q14194	DPYL1_HUMAN	Dihydropyrimidinase-related protein 1
P23471	PTPRZ_HUMAN	Receptor-type tyrosine-protein phosphatase zeta
P04075	ALDOA_HUMAN	Fructose-bisphosphate aldolase A

Q01995	TAGL_HUMAN	Transgelin
P27797	CALR_HUMAN	Calreticulin
P04264	K2C1_HUMAN	Keratin, type II cytoskeletal 1
Q12841	FSTL1_HUMAN	Follistatin-related protein 1
P24821	TENA_HUMAN	Tenascin
Q9Y617	SERC_HUMAN	Phosphoserine aminotransferase
P21810	PGS1_HUMAN	Biglycan
Q14195	DPYL3_HUMAN	Dihydropyrimidinase-related protein 3
P23528	COF1_HUMAN	Cofilin-1
P37837	TALDO_HUMAN	Transaldolase
P51884	LUM_HUMAN	Lumican
Q9BPU6	DPYL5_HUMAN	Dihydropyrimidinase-related protein 5
P23284	PPIB_HUMAN	Peptidyl-prolyl cis-trans isomerase B
P62937	PPIA_HUMAN	Peptidyl-prolyl cis-trans isomerase A
P07237	PDIA1_HUMAN	Protein disulfide-isomerase
P34932	HSP74_HUMAN	Heat shock 70 kDa protein 4
P0DMV9	HS71B_HUMAN	Heat shock 70 kDa protein 1B {ECO:0000312 HGNC:HGNC:5233}
P68104	EF1A1_HUMAN	Elongation factor 1-alpha 1
P13645	K1C10_HUMAN	Keratin, type I cytoskeletal 10
P40926	MDHM_HUMAN	Malate dehydrogenase, mitochondrial
Q99497	PARK7_HUMAN	Protein deglycase DJ-1 {ECO:0000303 PubMed:25416785}
Q08380	LG3BP_HUMAN	Galectin-3-binding protein
P19022	CADH2_HUMAN	Cadherin-2
P50395	GDIB_HUMAN	Rab GDP dissociation inhibitor beta
Q06830	PRDX1_HUMAN	Peroxiredoxin-1
P09211	GSTP1_HUMAN	Glutathione S-transferase P
P61978	HNRPK_HUMAN	Heterogeneous nuclear ribonucleoprotein K

O75083	WDR1_HUMAN	WD repeat-containing protein 1
Q14204	DYHC1_HUMAN	Cytoplasmic dynein 1 heavy chain 1
P22626	ROA2_HUMAN	Heterogeneous nuclear ribonucleoproteins A2/B1
P63104	1433Z_HUMAN	14-3-3 protein zeta/delta
P28074	PSB5_HUMAN	Proteasome subunit beta type-5
Q14697	GANAB_HUMAN	Neutral alpha-glucosidase AB
Q96KP4	CNDP2_HUMAN	Cytosolic non-specific dipeptidase
P27695	APEX1_HUMAN	DNA-(apurinic or apyrimidinic site) lyase
P00505	AATM_HUMAN	Aspartate aminotransferase, mitochondrial
P14625	ENPL_HUMAN	Endoplasmin
P18669	PGAM1_HUMAN	Phosphoglycerate mutase 1
P07355	ANXA2_HUMAN	Annexin A2
P35237	SPB6_HUMAN	Serpin B6
P35052	GPC1_HUMAN	Glypican-1
P09936	UCHL1_HUMAN	Ubiquitin carboxyl-terminal hydrolase isozyme L1
P40925	MDHC_HUMAN	Malate dehydrogenase, cytoplasmic
P37802	TAGL2_HUMAN	Transgelin-2
P09104	ENOG_HUMAN	Gamma-enolase
P16035	TIMP2_HUMAN	Metalloproteinase inhibitor 2
P10809	CH60_HUMAN	60 kDa heat shock protein, mitochondrial
P23142	FBLN1_HUMAN	Fibulin-1
P30041	PRDX6_HUMAN	Peroxiredoxin-6
Q16881	TRXR1_HUMAN	Thioredoxin reductase 1, cytoplasmic
P35908	K22E_HUMAN	Keratin, type II cytoskeletal 2 epidermal
O14594	NCAN_HUMAN	Neurocan core protein
P20618	PSB1_HUMAN	Proteasome subunit beta type-1
P12956	XRCC6_HUMAN	X-ray repair cross-complementing protein 6

P60900	PSA6_HUMAN	Proteasome subunit alpha type-6
Q9NY33	DPP3_HUMAN	Dipeptidyl peptidase 3
P32119	PRDX2_HUMAN	Peroxiredoxin-2
P07339	CATD_HUMAN	Cathepsin D
P27348	1433T_HUMAN	14-3-3 protein theta
Q9HC38	GLOD4_HUMAN	Glyoxalase domain-containing protein 4
Q16531	DDB1_HUMAN	DNA damage-binding protein 1
P22392	NDKB_HUMAN	Nucleoside diphosphate kinase B
P07900	HS90A_HUMAN	Heat shock protein HSP 90-alpha
P17174	AATC_HUMAN	Aspartate aminotransferase, cytoplasmic
O15540	FABP7_HUMAN	Fatty acid-binding protein, brain
Q9BWD1	THIC_HUMAN	Acetyl-CoA acetyltransferase, cytosolic
P11766	ADHX_HUMAN	Alcohol dehydrogenase class-3
P10909	CLUS_HUMAN	Clusterin
O14818	PSA7_HUMAN	Proteasome subunit alpha type-7
O00410	IPO5_HUMAN	Importin-5
Q15907	RB11B_HUMAN	Ras-related protein Rab-11B
P30086	PEBP1_HUMAN	Phosphatidylethanolamine-binding protein 1
P28066	PSA5_HUMAN	Proteasome subunit alpha type-5
Q13838	DX39B_HUMAN	Spliceosome RNA helicase DDX39B
P01034	CYTC_HUMAN	Cystatin-C
P12004	PCNA_HUMAN	Proliferating cell nuclear antigen
P12814	ACTN1_HUMAN	Alpha-actinin-1
P49721	PSB2_HUMAN	Proteasome subunit beta type-2
Q14019	COTL1_HUMAN	Coactosin-like protein
P49321	NASP_HUMAN	Nuclear autoantigenic sperm protein
P01033	TIMP1_HUMAN	Metalloproteinase inhibitor 1

Q14974	IMB1_HUMAN	Importin subunit beta-1
P04792	HSPB1_HUMAN	Heat shock protein beta-1
P02766	TTHY_HUMAN	Transthyretin
P06576	ATPB_HUMAN	ATP synthase subunit beta, mitochondrial
P09651	ROA1_HUMAN	Heterogeneous nuclear ribonucleoprotein A1
P18206	VINC_HUMAN	Vinculin
P07737	PROF1_HUMAN	Profilin-1
Q9BVA1	TBB2B_HUMAN	Tubulin beta-2B chain
P14314	GLU2B_HUMAN	Glucosidase 2 subunit beta
P09382	LEG1_HUMAN	Galectin-1
P25787	PSA2_HUMAN	Proteasome subunit alpha type-2
Q92820	GGH_HUMAN	Gamma-glutamyl hydrolase
O95336	6PGL_HUMAN	6-phosphogluconolactonase
P13010	XRCC5_HUMAN	X-ray repair cross-complementing protein 5
P60842	IF4A1_HUMAN	Eukaryotic initiation factor 4A-I
P08758	ANXA5_HUMAN	Annexin A5
P49419	AL7A1_HUMAN	Alpha-aminoadipic semialdehyde dehydrogenase
P35527	K1C9_HUMAN	Keratin, type I cytoskeletal 9
P23246	SFPQ_HUMAN	Splicing factor, proline- and glutamine-rich
P25789	PSA4_HUMAN	Proteasome subunit alpha type-4
P23526	SAHH_HUMAN	Adenosylhomocysteinase
P15121	ALDR_HUMAN	Aldose reductase
Q99879	H2B1M_HUMAN	Histone H2B type 1-M
P26641	EF1G_HUMAN	Elongation factor 1-gamma
P46821	MAP1B_HUMAN	Microtubule-associated protein 1B
P14324	FPPS_HUMAN	Farnesyl pyrophosphate synthase
Q8NBS9	TXND5_HUMAN	Thioredoxin domain-containing protein 5

P23396	RS3_HUMAN	40S ribosomal protein S3
P62987	RL40_HUMAN	Ubiquitin-60S ribosomal protein L40
P07858	CATB_HUMAN	Cathepsin B
Q15019	SEPT2_HUMAN	Septin-2
P25786	PSA1_HUMAN	Proteasome subunit alpha type-1
P62805	H4_HUMAN	Histone H4
P61981	1433G_HUMAN	14-3-3 protein gamma
P84077	ARF1_HUMAN	ADP-ribosylation factor 1
Q01581	HMCS1_HUMAN	Hydroxymethylglutaryl-CoA synthase, cytoplasmic
P30044	PRDX5_HUMAN	Peroxiredoxin-5, mitochondrial
Q01469	FABP5_HUMAN	Fatty acid-binding protein, epidermal
P39019	RS19_HUMAN	40S ribosomal protein S19
Q14103	HNRPD_HUMAN	Heterogeneous nuclear ribonucleoprotein D0
Q15631	TSN_HUMAN	Translin
Q15084	PDIA6_HUMAN	Protein disulfide-isomerase A6
P61769	B2MG_HUMAN	Beta-2-microglobulin
Q09028	RBBP4_HUMAN	Histone-binding protein RBBP4
Q13509	TBB3_HUMAN	Tubulin beta-3 chain
O00533	NCHL1_HUMAN	Neural cell adhesion molecule L1-like protein
P68036	UB2L3_HUMAN	Ubiquitin-conjugating enzyme E2 L3
P78371	TCPB_HUMAN	T-complex protein 1 subunit beta
O75368	SH3L1_HUMAN	SH3 domain-binding glutamic acid-rich-like protein
Q01518	CAP1_HUMAN	Adenylyl cyclase-associated protein 1
P11216	PYGB_HUMAN	Glycogen phosphorylase, brain form
Q13263	TIF1B_HUMAN	Transcription intermediary factor 1-beta
P49720	PSB3_HUMAN	Proteasome subunit beta type-3
Q04760	LGUL_HUMAN	Lactoylglutathione lyase

P52565	GDIR1_HUMAN	Rho GDP-dissociation inhibitor 1
P62269	RS18_HUMAN	40S ribosomal protein S18
P05388	RLA0_HUMAN	60S acidic ribosomal protein P0
P07686	HEXB_HUMAN	Beta-hexosaminidase subunit beta
Q99832	TCPH_HUMAN	T-complex protein 1 subunit eta
P10155	RO60_HUMAN	60 kDa SS-A/Ro ribonucleoprotein
O00299	CLIC1_HUMAN	Chloride intracellular channel protein 1
Q15149	PLEC_HUMAN	Plectin
P43490	NAMPT_HUMAN	Nicotinamide phosphoribosyltransferase
P50990	TCPQ_HUMAN	T-complex protein 1 subunit theta
O75390	CISY_HUMAN	Citrate synthase, mitochondrial
P61604	CH10_HUMAN	10 kDa heat shock protein, mitochondrial
Q12765	SCRN1_HUMAN	Secernin-1
P14866	HNRPL_HUMAN	Heterogeneous nuclear ribonucleoprotein L
P62081	RS7_HUMAN	40S ribosomal protein S7
Q15181	IPYR_HUMAN	Inorganic pyrophosphatase
P60981	DEST_HUMAN	Dextrin
P14550	AK1A1_HUMAN	Alcohol dehydrogenase [NADP(+)]
Q96QV6	H2A1A_HUMAN	Histone H2A type 1-A
P31946	1433B_HUMAN	14-3-3 protein beta/alpha
P50454	SERPH_HUMAN	Serpin H1
P16949	STMN1_HUMAN	Stathmin
P59998	ARPC4_HUMAN	Actin-related protein 2/3 complex subunit 4
P28072	PSB6_HUMAN	Proteasome subunit beta type-6
P40227	TCPZ_HUMAN	T-complex protein 1 subunit zeta
P25788	PSA3_HUMAN	Proteasome subunit alpha type-3
P00390	GSHR_HUMAN	Glutathione reductase, mitochondrial

P06865	HEXA_HUMAN	Beta-hexosaminidase subunit alpha
P62826	RAN_HUMAN	GTP-binding nuclear protein Ran
P61158	ARP3_HUMAN	Actin-related protein 3
P06396	GELS_HUMAN	Gelsolin
P20700	LMNB1_HUMAN	Lamin-B1
P61088	UBE2N_HUMAN	Ubiquitin-conjugating enzyme E2 N
P30153	2AAA_HUMAN	Serine/threonine-protein phosphatase 2A 65 kDa regulatory subunit A alpha isoform
Q16851	UGPA_HUMAN	UTP--glucose-1-phosphate uridylyltransferase
P18065	IBP2_HUMAN	Insulin-like growth factor-binding protein 2
Q04917	1433F_HUMAN	14-3-3 protein eta
P08865	RSSA_HUMAN	40S ribosomal protein SA {ECO:0000255 HAMAP-Rule:MF_03016}
P07910	HNRPC_HUMAN	Heterogeneous nuclear ribonucleoproteins C1/C2
Q13907	IDI1_HUMAN	Isopentenyl-diphosphate Delta-isomerase 1
P28838	AMPL_HUMAN	Cytosol aminopeptidase
P53396	ACLY_HUMAN	ATP-citrate synthase
Q9NVA2	SEP11_HUMAN	Septin-11
Q15691	MARE1_HUMAN	Microtubule-associated protein RP/EB family member 1
Q9UKK9	NUDT5_HUMAN	ADP-sugar pyrophosphatase
P00441	SODC_HUMAN	Superoxide dismutase [Cu-Zn]
Q9BRA2	TXD17_HUMAN	Thioredoxin domain-containing protein 17
P46926	GNPI1_HUMAN	Glucosamine-6-phosphate isomerase 1
P13693	TCTP_HUMAN	Translationally-controlled tumor protein
P05455	LA_HUMAN	Lupus La protein
O15067	PUR4_HUMAN	Phosphoribosylformylglycinamide synthase
Q14011	CIRBP_HUMAN	Cold-inducible RNA-binding protein
P13797	PLST_HUMAN	Plastin-3

P63241	IF5A1_HUMAN	Eukaryotic translation initiation factor 5A-1
Q13404	UB2V1_HUMAN	Ubiquitin-conjugating enzyme E2 variant 1
P63244	RACK1_HUMAN	Receptor of activated protein C kinase 1
P09960	LKHA4_HUMAN	Leukotriene A-4 hydrolase
P62701	RS4X_HUMAN	40S ribosomal protein S4, X isoform
P55060	XPO2_HUMAN	Exportin-2
Q12905	ILF2_HUMAN	Interleukin enhancer-binding factor 2
P30048	PRDX3_HUMAN	Thioredoxin-dependent peroxide reductase, mitochondrial
Q13228	SBP1_HUMAN	Selenium-binding protein 1
P84243	H33_HUMAN	Histone H3.3
P11586	C1TC_HUMAN	C-1-tetrahydrofolate synthase, cytoplasmic
P12955	PEPD_HUMAN	Xaa-Pro dipeptidase
P35241	RADI_HUMAN	Radixin
P04083	ANXA1_HUMAN	Annexin A1
P12081	SYHC_HUMAN	Histidine--tRNA ligase, cytoplasmic
P34897	GLYM_HUMAN	Serine hydroxymethyltransferase, mitochondrial
P60953	CDC42_HUMAN	Cell division control protein 42 homolog
P47756	CAPZB_HUMAN	F-actin-capping protein subunit beta
P54687	BCAT1_HUMAN	Branched-chain-amino-acid aminotransferase, cytosolic
Q15366	PCBP2_HUMAN	Poly(rC)-binding protein 2
P00491	PNPH_HUMAN	Purine nucleoside phosphorylase
P99999	CYC_HUMAN	Cytochrome c
O00154	BACH_HUMAN	Cytosolic acyl coenzyme A thioester hydrolase
P38159	RBMX_HUMAN	RNA-binding motif protein, X chromosome
P10599	THIO_HUMAN	Thioredoxin
P13798	ACPH_HUMAN	Acylamino-acid-releasing enzyme
Q15257	PTPA_HUMAN	Serine/threonine-protein phosphatase 2A activator

O43852	CALU_HUMAN	Calumenin
P15880	RS2_HUMAN	40S ribosomal protein S2
P37108	SRP14_HUMAN	Signal recognition particle 14 kDa protein
Q15417	CNN3_HUMAN	Calponin-3
P15531	NDKA_HUMAN	Nucleoside diphosphate kinase A
Q969H8	MYDGF_HUMAN	Myeloid-derived growth factor {ECO:0000303 PubMed:25581518, ECO:0000312 HGNC:HGNC:16948}
P78417	GSTO1_HUMAN	Glutathione S-transferase omega-1
P22234	PUR6_HUMAN	Multifunctional protein ADE2
Q99873	ANM1_HUMAN	Protein arginine N-methyltransferase 1
P68366	TBA4A_HUMAN	Tubulin alpha-4A chain
P33993	MCM7_HUMAN	DNA replication licensing factor MCM7
Q16643	DREB_HUMAN	Drebrin
O94760	DDAH1_HUMAN	N(G),N(G)-dimethylarginine dimethylaminohydrolase 1
P14174	MIF_HUMAN	Macrophage migration inhibitory factor
Q8NCW5	NNRE_HUMAN	NAD(P)H-hydrate epimerase {ECO:0000255 HAMAP-Rule:MF_03159}
Q15102	PA1B3_HUMAN	Platelet-activating factor acetylhydrolase IB subunit gamma
Q9NTK5	OLA1_HUMAN	Obg-like ATPase 1 {ECO:0000255 HAMAP-Rule:MF_03167}
P07477	TRY1_HUMAN	Trypsin-1
P42574	CASP3_HUMAN	Caspase-3
P51858	HDGF_HUMAN	Hepatoma-derived growth factor
P48637	GSHB_HUMAN	Glutathione synthetase
Q53FA7	QORX_HUMAN	Quinone oxidoreductase PIG3
P08133	ANXA6_HUMAN	Annexin A6
Q9UQ80	PA2G4_HUMAN	Proliferation-associated protein 2G4
P49368	TCPG_HUMAN	T-complex protein 1 subunit gamma

P16403	H12_HUMAN	Histone H1.2
Q99436	PSB7_HUMAN	Proteasome subunit beta type-7
Q15365	PCBP1_HUMAN	Poly(rC)-binding protein 1
P15311	EZRI_HUMAN	Ezrin
P17987	TCPA_HUMAN	T-complex protein 1 subunit alpha
Q8WX77	IBPL1_HUMAN	Insulin-like growth factor-binding protein-like 1
O95865	DDAH2_HUMAN	N(G),N(G)-dimethylarginine dimethylaminohydrolase 2
P15104	GLNA_HUMAN	Glutamine synthetase
P68371	TBB4B_HUMAN	Tubulin beta-4B chain
Q9UHD8	SEPT9_HUMAN	Septin-9
P29966	MARCS_HUMAN	Myristoylated alanine-rich C-kinase substrate
P46783	RS10_HUMAN	40S ribosomal protein S10
P67775	PP2AA_HUMAN	Serine/threonine-protein phosphatase 2A catalytic subunit alpha isoform
Q9H299	SH3L3_HUMAN	SH3 domain-binding glutamic acid-rich-like protein 3
P62942	FKBP1A_HUMAN	Peptidyl-prolyl cis-trans isomerase FKBP1A
P43003	EAA1_HUMAN	Excitatory amino acid transporter 1
Q96A72	MGN2_HUMAN	Protein mago nashi homolog 2
P62244	RS15A_HUMAN	40S ribosomal protein S15a
Q9BUT1	BDH2_HUMAN	3-hydroxybutyrate dehydrogenase type 2
O14531	DPYL4_HUMAN	Dihydropyrimidinase-related protein 4
P49458	SRP09_HUMAN	Signal recognition particle 9 kDa protein
P68402	PA1B2_HUMAN	Platelet-activating factor acetylhydrolase IB subunit beta
P41250	SYG_HUMAN	Glycine--tRNA ligase
P62851	RS25_HUMAN	40S ribosomal protein S25
P31948	STIP1_HUMAN	Stress-induced-phosphoprotein 1
P07108	ACBP_HUMAN	Acyl-CoA-binding protein

P60660	MYL6_HUMAN	Myosin light polypeptide 6
O00468	AGRIN_HUMAN	Agrin
Q9Y266	NUDC_HUMAN	Nuclear migration protein nudC
P28065	PSB9_HUMAN	Proteasome subunit beta type-9
Q9Y281	COF2_HUMAN	Cofilin-2
P35268	RL22_HUMAN	60S ribosomal protein L22
Q92688	AN32B_HUMAN	Acidic leucine-rich nuclear phosphoprotein 32 family member B
P48643	TCPE_HUMAN	T-complex protein 1 subunit epsilon
P62906	RL10A_HUMAN	60S ribosomal protein L10a
P11940	PABP1_HUMAN	Polyadenylate-binding protein 1
O43776	SYNC_HUMAN	Asparagine--tRNA ligase, cytoplasmic
P18085	ARF4_HUMAN	ADP-ribosylation factor 4
P78330	SERB_HUMAN	Phosphoserine phosphatase
Q06323	PSME1_HUMAN	Proteasome activator complex subunit 1
P54578	UBP14_HUMAN	Ubiquitin carboxyl-terminal hydrolase 14
P31153	METK2_HUMAN	S-adenosylmethionine synthase isoform type-2
P23919	KTHY_HUMAN	Thymidylate kinase
O15511	ARPC5_HUMAN	Actin-related protein 2/3 complex subunit 5
Q14847	LASP1_HUMAN	LIM and SH3 domain protein 1
P33316	DUT_HUMAN	Deoxyuridine 5'-triphosphate nucleotidohydrolase, mitochondrial
P61457	PHS_HUMAN	Pterin-4-alpha-carbinolamine dehydratase
O00231	PSD11_HUMAN	26S proteasome non-ATPase regulatory subunit 11
Q16181	SEPT7_HUMAN	Septin-7
Q9NPH2	INO1_HUMAN	Inositol-3-phosphate synthase 1
Q9UHY7	ENOPH_HUMAN	Enolase-phosphatase E1 {ECO:0000255 HAMAP-Rule:MF_03117}
Q16778	H2B2E_HUMAN	Histone H2B type 2-E
Q9HAV0	GBB4_HUMAN	Guanine nucleotide-binding protein subunit beta-4

P63279	UBC9_HUMAN	SUMO-conjugating enzyme UBC9
O14979	HNRDL_HUMAN	Heterogeneous nuclear ribonucleoprotein D-like
P61247	RS3A_HUMAN	40S ribosomal protein S3a {ECO:0000255 HAMAP-Rule:MF_03122}
Q96FW1	OTUB1_HUMAN	Ubiquitin thioesterase OTUB1
P27824	CALX_HUMAN	Calnexin
Q86VP6	CAND1_HUMAN	Cullin-associated NEDD8-dissociated protein 1
P35637	FUS_HUMAN	RNA-binding protein FUS
O43175	SERA_HUMAN	D-3-phosphoglycerate dehydrogenase
Q9Y547	IFT25_HUMAN	Intraflagellar transport protein 25 homolog
Q9H0R4	HDHD2_HUMAN	Haloacid dehalogenase-like hydrolase domain-containing protein 2
P28482	MK01_HUMAN	Mitogen-activated protein kinase 1
P16070	CD44_HUMAN	CD44 antigen
P27816	MAP4_HUMAN	Microtubule-associated protein 4
Q13885	TBB2A_HUMAN	Tubulin beta-2A chain
P62140	PP1B_HUMAN	Serine/threonine-protein phosphatase PP1-beta catalytic subunit
Q9NZL9	MAT2B_HUMAN	Methionine adenosyltransferase 2 subunit beta
Q9UL46	PSME2_HUMAN	Proteasome activator complex subunit 2
Q9GZT8	NIF3L_HUMAN	NIF3-like protein 1 {ECO:0000305 PubMed:11124544}
Q6EEV6	SUMO4_HUMAN	Small ubiquitin-related modifier 4
Q15293	RCN1_HUMAN	Reticulocalbin-1
P62917	RL8_HUMAN	60S ribosomal protein L8
P52888	THOP1_HUMAN	Thimet oligopeptidase
P62318	SMD3_HUMAN	Small nuclear ribonucleoprotein Sm D3
P01308	INS_HUMAN	Insulin
P18621	RL17_HUMAN	60S ribosomal protein L17
P68032	ACTC_HUMAN	Actin, alpha cardiac muscle 1
Q99523	SORT_HUMAN	Sortilin

Q15819	UB2V2_HUMAN	Ubiquitin-conjugating enzyme E2 variant 2
O43809	CPSF5_HUMAN	Cleavage and polyadenylation specificity factor subunit 5
Q96G03	PGM2_HUMAN	Phosphoglucomutase-2
O76003	GLRX3_HUMAN	Glutaredoxin-3
Q7KZF4	SND1_HUMAN	Staphylococcal nuclease domain-containing protein 1
P28070	PSB4_HUMAN	Proteasome subunit beta type-4
P61163	ACTZ_HUMAN	Alpha-centractin
P31949	S10AB_HUMAN	Protein S100-A11
P19367	HXK1_HUMAN	Hexokinase-1
P26599	PTBP1_HUMAN	Polypyrimidine tract-binding protein 1
P51149	RAB7A_HUMAN	Ras-related protein Rab-7a
P62820	RAB1A_HUMAN	Ras-related protein Rab-1A
Q96AE4	FUBP1_HUMAN	Far upstream element-binding protein 1
P35080	PROF2_HUMAN	Profilin-2
O14980	XPO1_HUMAN	Exportin-1
O75223	GGCT_HUMAN	Gamma-glutamylcyclotransferase
Q07812	BAX_HUMAN	Apoptosis regulator BAX
Q92734	TFG_HUMAN	Protein TFG
P07954	FUMH_HUMAN	Fumarate hydratase, mitochondrial
Q9ULV4	COR1C_HUMAN	Coronin-1C
P61586	RHOA_HUMAN	Transforming protein RhoA
Q15121	PEA15_HUMAN	Astrocytic phosphoprotein PEA-15
P55263	ADK_HUMAN	Adenosine kinase
P48681	NEST_HUMAN	Nestin
P43034	LIS1_HUMAN	Platelet-activating factor acetylhydrolase IB subunit alpha {ECO:0000255 HAMAP-Rule:MF_03141}
Q9UNM6	PSD13_HUMAN	26S proteasome non-ATPase regulatory subunit 13

Q00688	FKBP3_HUMAN	Peptidyl-prolyl cis-trans isomerase FKBP3
Q15717	ELAV1_HUMAN	ELAV-like protein 1
P06748	NPM_HUMAN	Nucleophosmin
Q9UMY4	SNX12_HUMAN	Sorting nexin-12
P12111	CO6A3_HUMAN	Collagen alpha-3(VI) chain
P02452	CO1A1_HUMAN	Collagen alpha-1(I) chain
Q15582	BGH3_HUMAN	Transforming growth factor-beta-induced protein ig-h3
Q14767	LTBP2_HUMAN	Latent-transforming growth factor beta-binding protein 2
P20908	CO5A1_HUMAN	Collagen alpha-1(V) chain
P08476	INHBA_HUMAN	Inhibin beta A chain
P05997	CO5A2_HUMAN	Collagen alpha-2(V) chain
O00391	QSOX1_HUMAN	Sulfhydryl oxidase 1
P08572	CO4A2_HUMAN	Collagen alpha-2(IV) chain
P26022	PTX3_HUMAN	Pentraxin-related protein PTX3
P05067	A4_HUMAN	Amyloid beta A4 protein
P35579	MYH9_HUMAN	Myosin-9
P13667	PDIA4_HUMAN	Protein disulfide-isomerase A4
O76061	STC2_HUMAN	Stanniocalcin-2
P09493	TPM1_HUMAN	Tropomyosin alpha-1 chain
P19338	NUCL_HUMAN	Nucleolin
P02765	FETUA_HUMAN	Alpha-2-HS-glycoprotein
P00367	DHE3_HUMAN	Glutamate dehydrogenase 1, mitochondrial
P67936	TPM4_HUMAN	Tropomyosin alpha-4 chain
P13489	RINI_HUMAN	Ribonuclease inhibitor
O15144	ARPC2_HUMAN	Actin-related protein 2/3 complex subunit 2
P53618	COPB_HUMAN	Coatomer subunit beta
Q07954	LRP1_HUMAN	Prolow-density lipoprotein receptor-related protein 1

Q96GW7	PGCB_HUMAN	Brevican core protein
P04179	SODM_HUMAN	Superoxide dismutase [Mn], mitochondrial
P62249	RS16_HUMAN	40S ribosomal protein S16
Q01105	SET_HUMAN	Protein SET
P36222	CH3L1_HUMAN	Chitinase-3-like protein 1
Q13813	SPTN1_HUMAN	Spectrin alpha chain, non-erythrocytic 1
Q07020	RL18_HUMAN	60S ribosomal protein L18
Q15233	NONO_HUMAN	Non-POU domain-containing octamer-binding protein
P10768	ESTD_HUMAN	S-formylglutathione hydrolase
O60506	HNRPQ_HUMAN	Heterogeneous nuclear ribonucleoprotein Q
P30050	RL12_HUMAN	60S ribosomal protein L12
Q9Y696	CLIC4_HUMAN	Chloride intracellular channel protein 4
P31943	HNRH1_HUMAN	Heterogeneous nuclear ribonucleoprotein H
P28161	GSTM2_HUMAN	Glutathione S-transferase Mu 2
P00568	KAD1_HUMAN	Adenylate kinase isoenzyme 1 {ECO:0000255 HAMAP-Rule:MF_03171}
P46108	CRK_HUMAN	Adapter molecule crk
P62241	RS8_HUMAN	40S ribosomal protein S8
P43121	MUC18_HUMAN	Cell surface glycoprotein MUC18
P26639	SYTC_HUMAN	Threonine--tRNA ligase, cytoplasmic
P50991	TCPD_HUMAN	T-complex protein 1 subunit delta
Q13151	ROA0_HUMAN	Heterogeneous nuclear ribonucleoprotein A0
P62857	RS28_HUMAN	40S ribosomal protein S28
P43487	RANG_HUMAN	Ran-specific GTPase-activating protein
O75531	BAF_HUMAN	Barrier-to-autointegration factor
O60888	CUTA_HUMAN	Protein CutA
P61353	RL27_HUMAN	60S ribosomal protein L27

P01008	ANT3_HUMAN	Antithrombin-III
P26373	RL13_HUMAN	60S ribosomal protein L13
O60462	NRP2_HUMAN	Neuropilin-2
Q6NVV1	R13P3_HUMAN	Putative 60S ribosomal protein L13a protein RPL13AP3
O75367	H2AY_HUMAN	Core histone macro-H2A.1
P53004	BIEA_HUMAN	Biliverdin reductase A
P49589	SYCC_HUMAN	Cysteine--tRNA ligase, cytoplasmic
Q07666	KHDR1_HUMAN	KH domain-containing, RNA-binding, signal transduction-associated protein 1
Q14764	MVP_HUMAN	Major vault protein
P62854	RS26_HUMAN	40S ribosomal protein S26
P62277	RS13_HUMAN	40S ribosomal protein S13
P62304	RUXE_HUMAN	Small nuclear ribonucleoprotein E
P16401	H15_HUMAN	Histone H1.5
P42126	EC11_HUMAN	Enoyl-CoA delta isomerase 1, mitochondrial
P18124	RL7_HUMAN	60S ribosomal protein L7
Q00839	HNRPU_HUMAN	Heterogeneous nuclear ribonucleoprotein U
Q99426	TBCB_HUMAN	Tubulin-folding cofactor B
P52597	HNRPF_HUMAN	Heterogeneous nuclear ribonucleoprotein F
P42785	PCP_HUMAN	Lysosomal Pro-X carboxypeptidase
Q14315	FLNC_HUMAN	Filamin-C
P53602	MVD1_HUMAN	Diphosphomevalonate decarboxylase
Q99729	ROAA_HUMAN	Heterogeneous nuclear ribonucleoprotein A/B
P56537	IF6_HUMAN	Eukaryotic translation initiation factor 6 {ECO:0000255 HAMAP-Rule:MF_03132}
O00469	PLOD2_HUMAN	Procollagen-lysine,2-oxoglutarate 5-dioxygenase 2
Q15436	SC23A_HUMAN	Protein transport protein Sec23A

P98179	RBM3_HUMAN	RNA-binding protein 3
Q14566	MCM6_HUMAN	DNA replication licensing factor MCM6
P32969	RL9_HUMAN	60S ribosomal protein L9
P01344	IGF2_HUMAN	Insulin-like growth factor II
P29218	IMPA1_HUMAN	Inositol monophosphatase 1
O00487	PSDE_HUMAN	26S proteasome non-ATPase regulatory subunit 14
P06493	CDK1_HUMAN	Cyclin-dependent kinase 1
P62753	RS6_HUMAN	40S ribosomal protein S6
P05386	RLA1_HUMAN	60S acidic ribosomal protein P1
P09341	GROA_HUMAN	Growth-regulated alpha protein
P62829	RL23_HUMAN	60S ribosomal protein L23
P62314	SMD1_HUMAN	Small nuclear ribonucleoprotein Sm D1
Q6YP21	KAT3_HUMAN	Kynurenine--oxoglutarate transaminase 3
P42766	RL35_HUMAN	60S ribosomal protein L35
P09874	PARP1_HUMAN	Poly [ADP-ribose] polymerase 1
Q9NR31	SAR1A_HUMAN	GTP-binding protein SAR1a
Q9Y5S9	RBM8A_HUMAN	RNA-binding protein 8A
P16152	CBR1_HUMAN	Carbonyl reductase [NADPH] 1
P07996	TSP1_HUMAN	Thrombospondin-1
P10915	HPLN1_HUMAN	Hyaluronan and proteoglycan link protein 1
O75326	SEM7A_HUMAN	Semaphorin-7A
P13611	CSPG2_HUMAN	Versican core protein
P07585	PGS2_HUMAN	Decorin
P08603	CFAH_HUMAN	Complement factor H
Q16610	ECM1_HUMAN	Extracellular matrix protein 1
P02461	CO3A1_HUMAN	Collagen alpha-1(III) chain

P98160	PGBM_HUMAN	Basement membrane-specific heparan sulfate proteoglycan core protein
Q13822	ENPP2_HUMAN	Ectonucleotide pyrophosphatase/phosphodiesterase family member 2
Q02809	PLOD1_HUMAN	Procollagen-lysine,2-oxoglutarate 5-dioxygenase 1
Q13308	PTK7_HUMAN	Inactive tyrosine-protein kinase 7
P09871	C1S_HUMAN	Complement C1s subcomponent
Q9NRN5	OLFL3_HUMAN	Olfactomedin-like protein 3
O95965	ITGBL_HUMAN	Integrin beta-like protein 1
Q08629	TICN1_HUMAN	Testican-1
Q96CG8	CTHR1_HUMAN	Collagen triple helix repeat-containing protein 1
P02792	FRIL_HUMAN	Ferritin light chain
P11047	LAMC1_HUMAN	Laminin subunit gamma-1
Q9Y490	TLN1_HUMAN	Talin-1
P41222	PTGDS_HUMAN	Prostaglandin-H2 D-isomerase
P07093	GDN_HUMAN	Glia-derived nexin
P22692	IBP4_HUMAN	Insulin-like growth factor-binding protein 4
Q05682	CALD1_HUMAN	Caldesmon
P68871	HBB_HUMAN	Hemoglobin subunit beta
Q13162	PRDX4_HUMAN	Peroxiredoxin-4
P28300	LYOX_HUMAN	Protein-lysine 6-oxidase
P35555	FBN1_HUMAN	Fibrillin-1
O14786	NRP1_HUMAN	Neuropilin-1
P03956	MMP1_HUMAN	Interstitial collagenase
P00736	C1R_HUMAN	Complement C1r subcomponent
Q9HCU0	CD248_HUMAN	Endosialin
Q8IUX7	AEBP1_HUMAN	Adipocyte enhancer-binding protein 1
Q9UBX5	FBLN5_HUMAN	Fibulin-5

P55287	CAD11_HUMAN	Cadherin-11
P19823	ITIH2_HUMAN	Inter-alpha-trypsin inhibitor heavy chain H2
P19105	ML12A_HUMAN	Myosin regulatory light chain 12A
Q9UBG0	MRC2_HUMAN	C-type mannose receptor 2
P02462	CO4A1_HUMAN	Collagen alpha-1(IV) chain
Q29963	1C06_HUMAN	HLA class I histocompatibility antigen, Cw-6 alpha chain
P42765	THIM_HUMAN	3-ketoacyl-CoA thiolase, mitochondrial
P06703	S10A6_HUMAN	Protein S100-A6
O75882	ATRN_HUMAN	Attractin
Q9UBP4	DKK3_HUMAN	Dickkopf-related protein 3
P67809	YBOX1_HUMAN	Nuclease-sensitive element-binding protein 1

References

1. Anjo SI, Santa C, Manadas B. Short GeLC-SWATH: a fast and reliable quantitative approach for proteomic screenings. *Proteomics* 2015;15:757-762.
2. Candiano G, Bruschi M, Musante L et al. Blue silver: a very sensitive colloidal Coomassie G-250 staining for proteome analysis. *Electrophoresis* 2004;25:1327-1333.
3. Manadas B, Santos AR, Szabadfi K et al. BDNF-induced changes in the expression of the translation machinery in hippocampal neurons: protein levels and dendritic mRNA. *J Proteome Res* 2009; 8:4536-4552.
4. Gillet LC, Navarro P, Tate S et al. Targeted data extraction of the MS/MS spectra generated by data-independent acquisition: a new concept for consistent and accurate proteome analysis. *Mol Cell Proteomics* 2012; 11:O111.016717.
5. Lambert JP, Ivosev G, Couzens AL et al. Mapping differential interactomes by affinity purification coupled with data-independent mass spectrometry acquisition. *Nat Methods* 2013; 10:1239.1245.