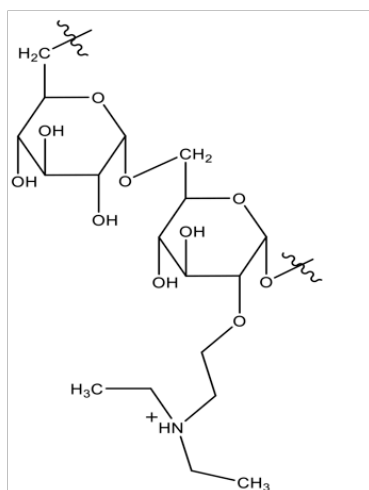


Supplementary Figures

A)



B)

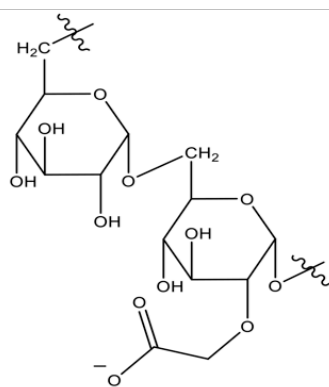


Figure 1: Chemical structure of **A)** positively-charged diethylaminoethyl-dextran (DEAE-dextran) and **B)** negatively-charged carboxymethyl-dextran (CM-dextran) are shown.

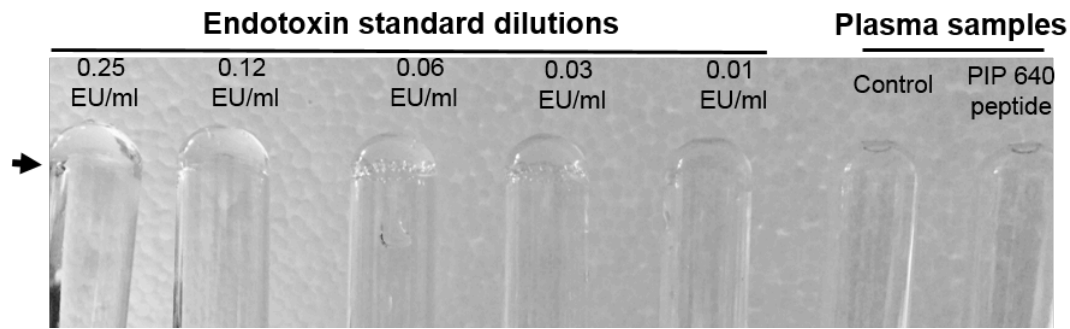


Figure 2. Semi-quantitative *Limulus amoebocyte* lysate (LAL) assay measuring the endotoxins levels in the blood plasma samples collected from the portal veins of rats 60 min after intraluminal injection of 20 mM PIP 640. Images show inverted test tubes of different endotoxin standard dilutions and tested blood plasma samples. The surface of the generated gels in the standard tubes (except 0.01 EU/ml) is highlighted with a black arrow. Images are representative of 3 independent experiments, n=3.