

Supplementary Information

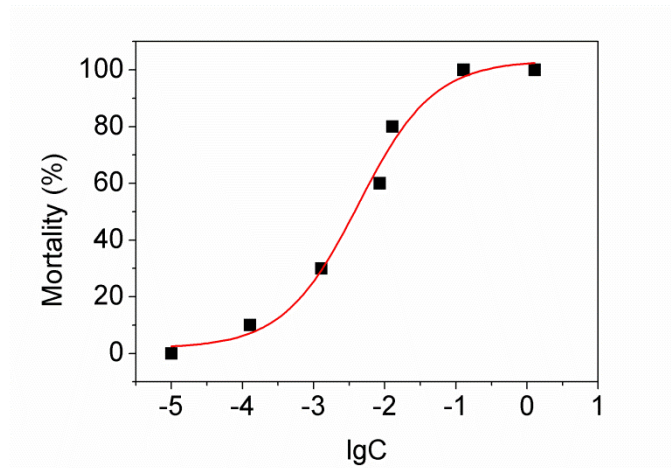
Untargeted metabolomics reveals transformation pathways and metabolic responses of the earthworm *Perionyx excavatus* after exposure to triphenyl phosphate

Lei Wang¹, Xulei Huang¹, Anna Karen Carrasco Laserna¹ and Sam Fong Yau Li^{1,2,*}

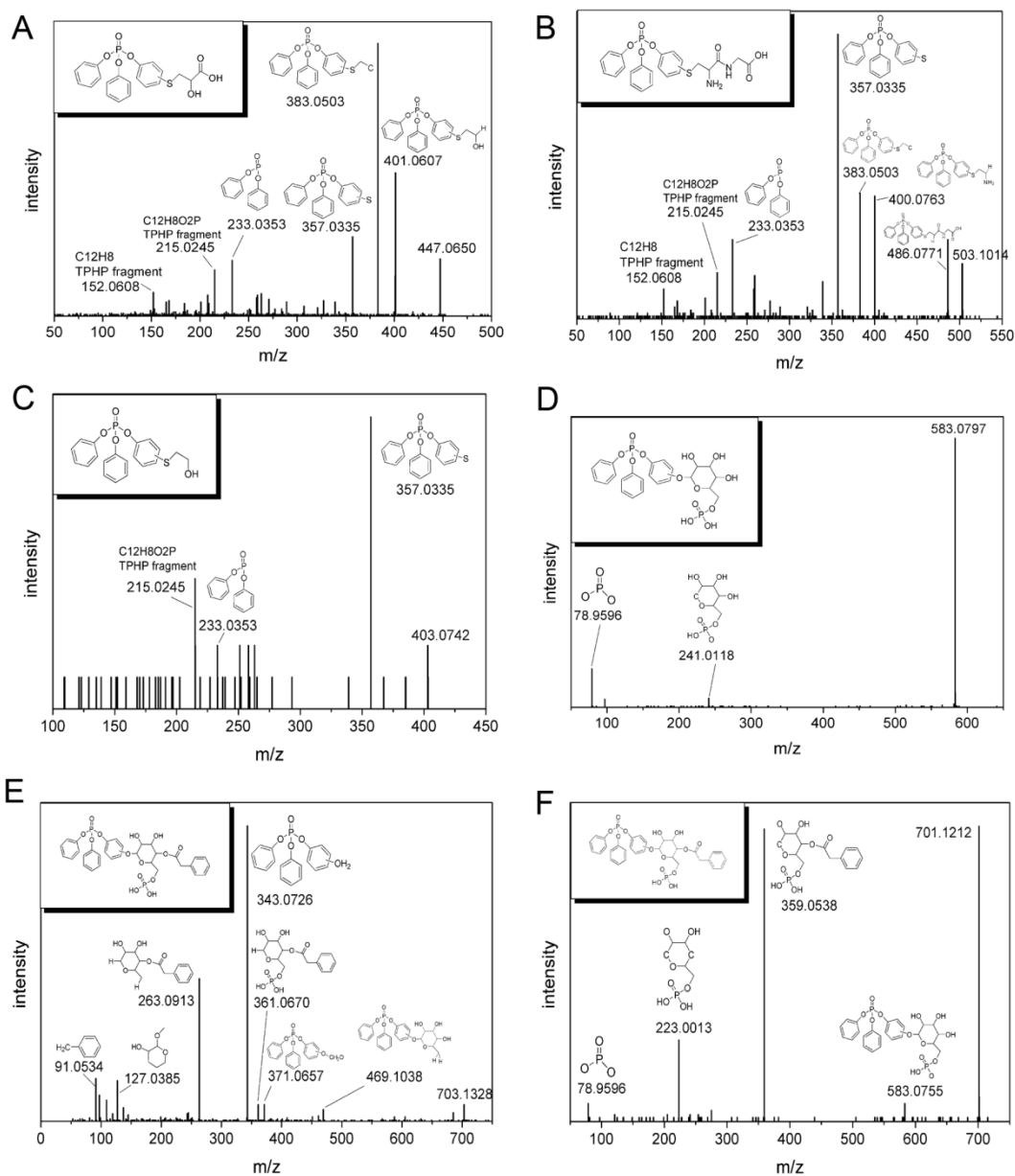
¹Department of Chemistry, National University of Singapore, 3 Science Drive 3, Singapore.

²NUS Environmental Research Institute (NERI), #02-01, T-Lab Building (TL), 5A Engineering Drive 1, Singapore 117411, Singapore.

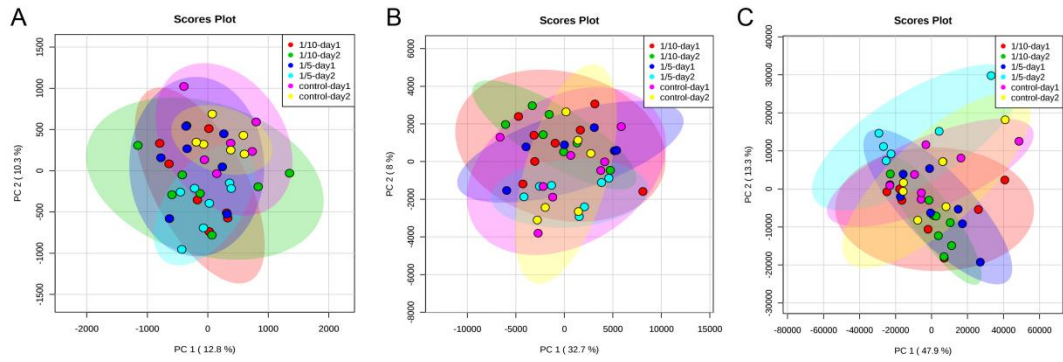
*Correspondence and requests for materials should be addressed to S.F.Y. Li. (email: chmlifys@nus.edu.sg)



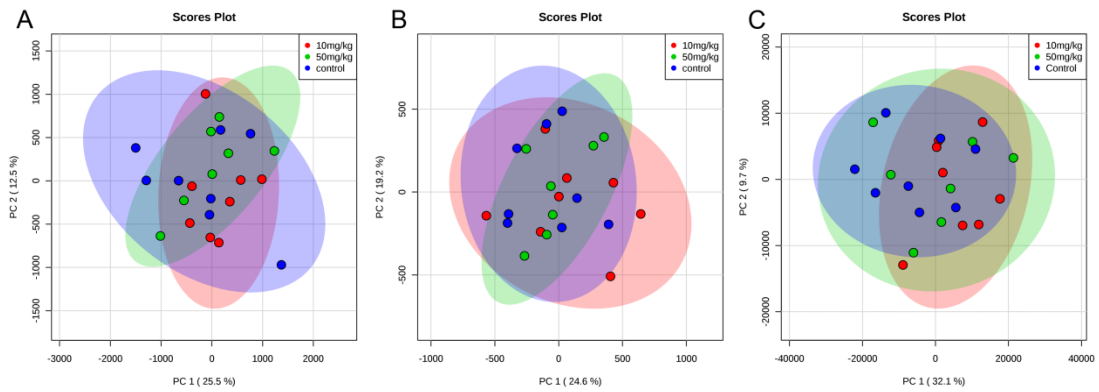
Supplementary Figure S1 Earthworm mortalities after dermal exposure for 48 h to filter papers with a series of TPHP concentrations. C: concentrations expressed as μg TPHP per cm^2 filter paper.



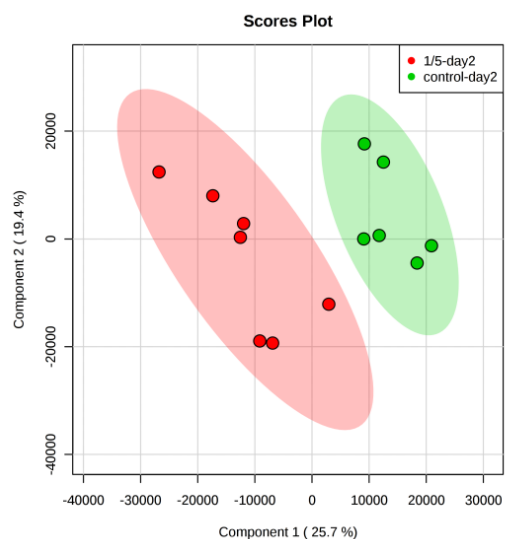
Supplementary Figure S2 MS/MS spectrum of (A) mercaptolactic acid-TPHP (m/z 447.0658 in ESI+), (B) cysteinylglycine-TPHP (m/z 503.1014 in ESI+), (C) mercaptoethanol-TPHP (m/z 403.0742 in ESI+), (D) phosphate-glucoside-TPHP (m/z 583.0797 in ESI-), and C₁₄H₁₉O₁₀P-TPHP [(E) m/z 703.1316 in ESI+ and (F) m/z 701.1212 in ESI-] with annotation of the putative fragments.



Supplementary Figure S3 Principal component analysis of extracted features from LC-QTOF spectra in (A) positive mode and (B) negative mode, and from (C) GC-MS spectra after acute exposure. The labels 1/10 and 1/5 refer to 1/10 LC50 and 1/5 LC50 exposure groups, respectively.



Supplementary Figure S4 Principal component analysis of extracted features from LC-QTOF spectra in (A) positive mode and (B) negative mode, and from (C) GC-MS spectra after chronic exposure.



Supplementary Figure S5 Score plot of partial least squares discriminant analysis of GC-MS data (Control-day 2 versus 1/5 LC₅₀-day2) after probabilistic quotient normalization.