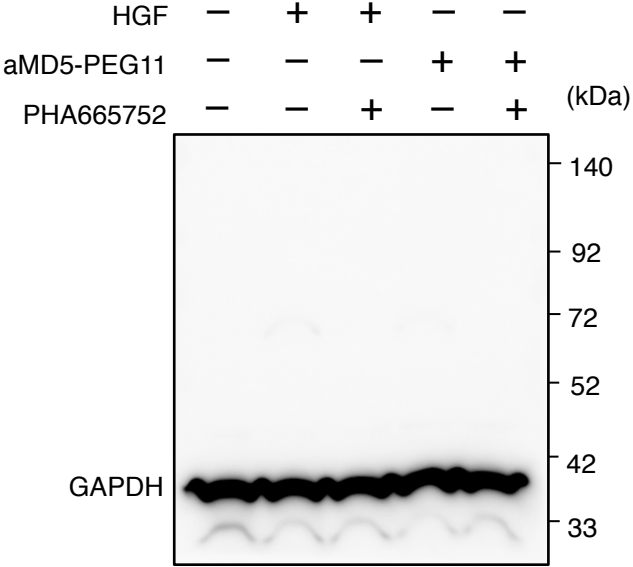
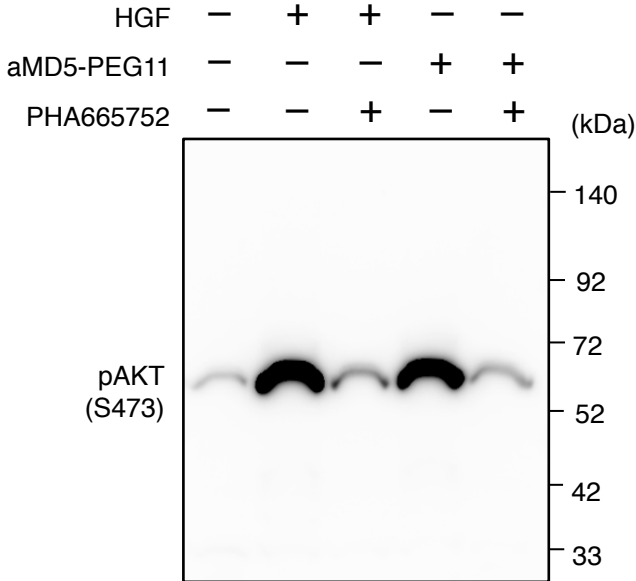
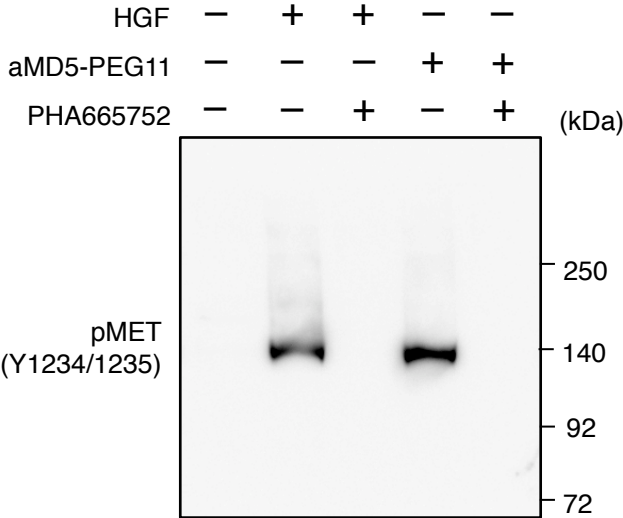


**Cellular signaling and gene expression profiles evoked by a bivalent macrocyclic peptide that serves as an artificial MET receptor agonist**

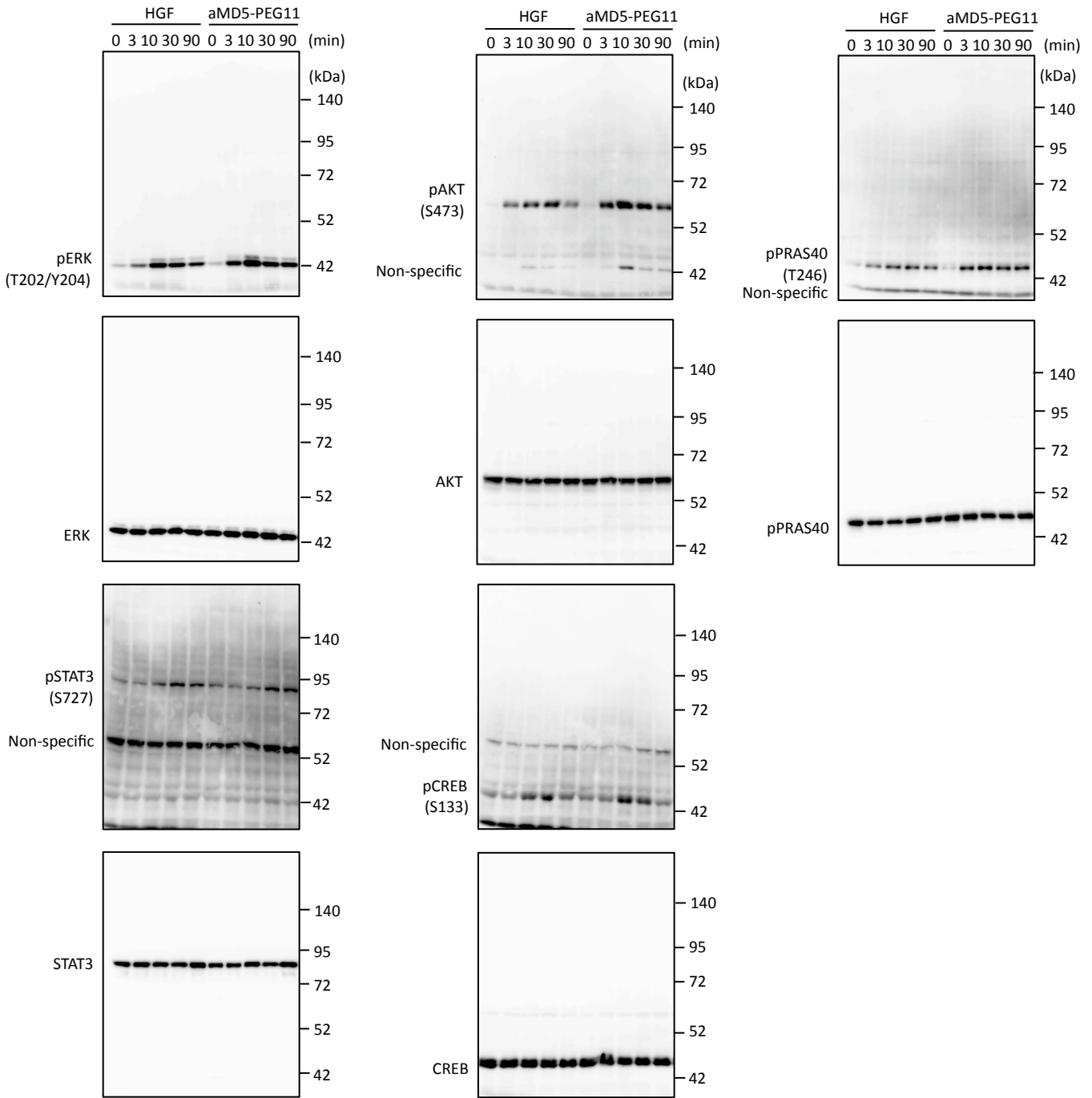
Wenyu Miao, Katsuya Sakai, Naoya Ozawa, Takumi Nishiuchi, Yoshinori Suzuki, Kenichiro Ito, Tomomi Morioka, Masataka Umitsu, Junichi Takagi, Hiroaki Suga and Kunio Matsumoto

Supplementary Figure 1



Supplementary Fig.1. Original blot images for Fig. 3A.

Supplementary Figure 2



Supplementary Fig.2. Original blot images for Fig. 3B.