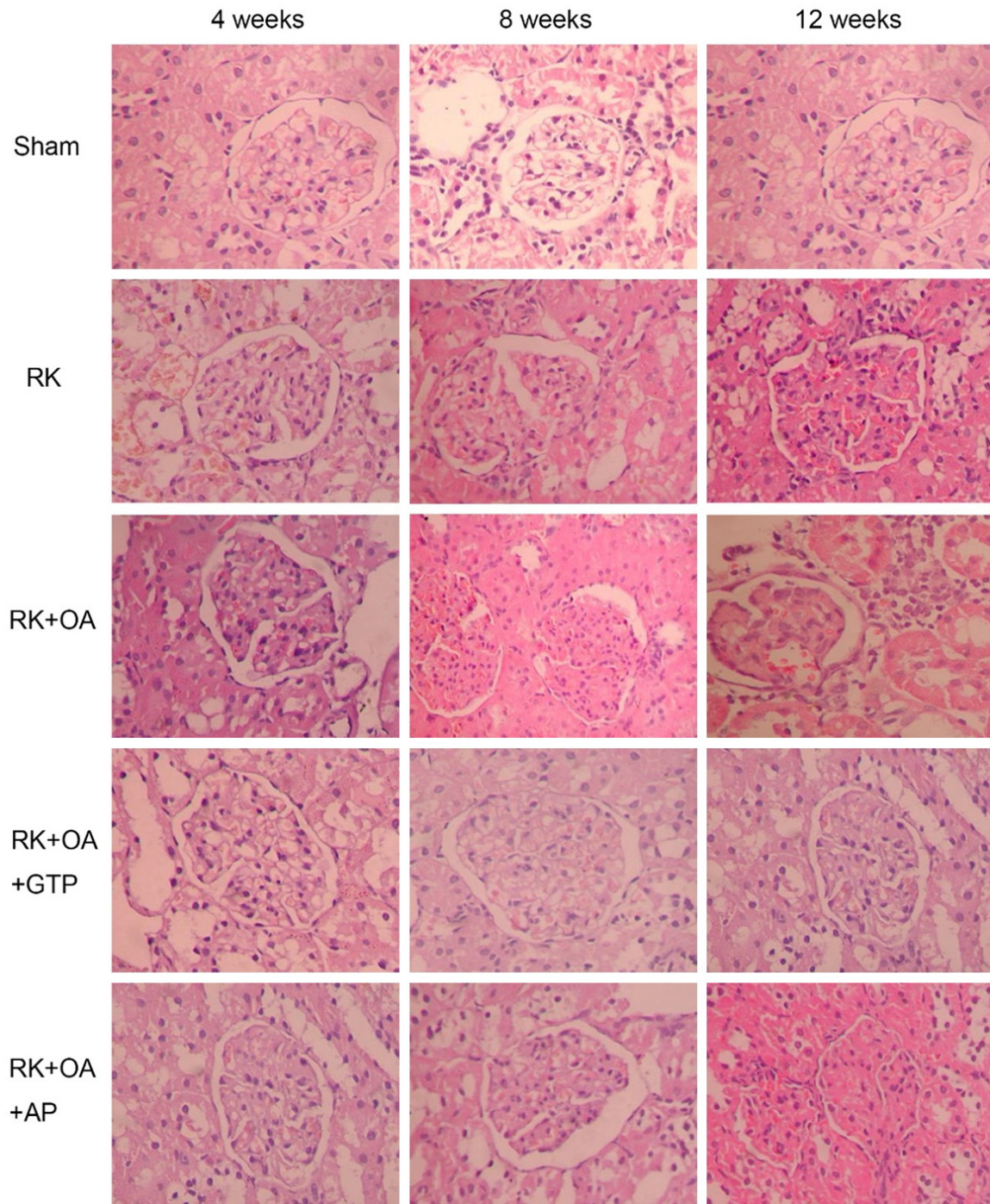
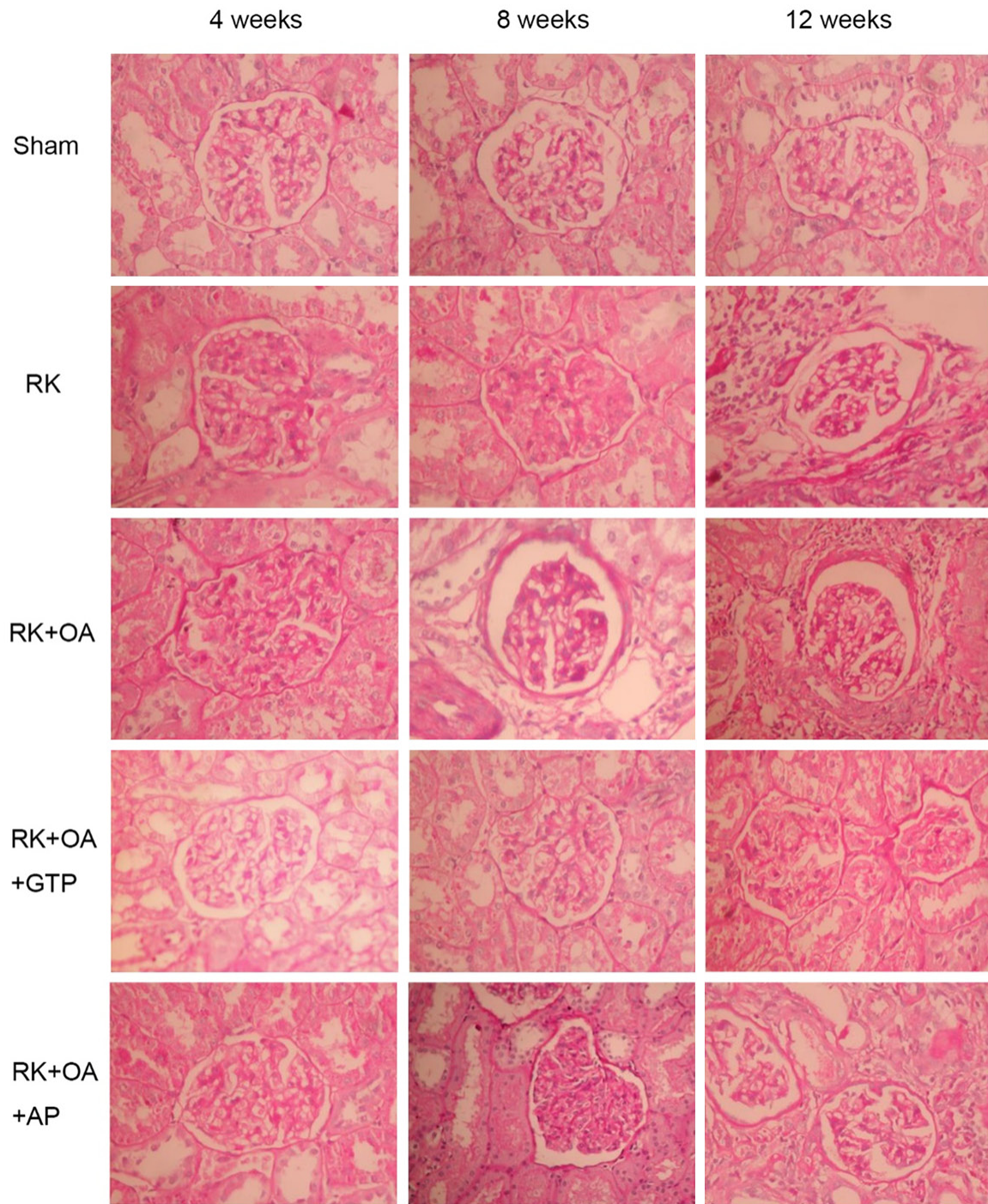


GTPs protect against renal injury through jagged1/notch1 signaling



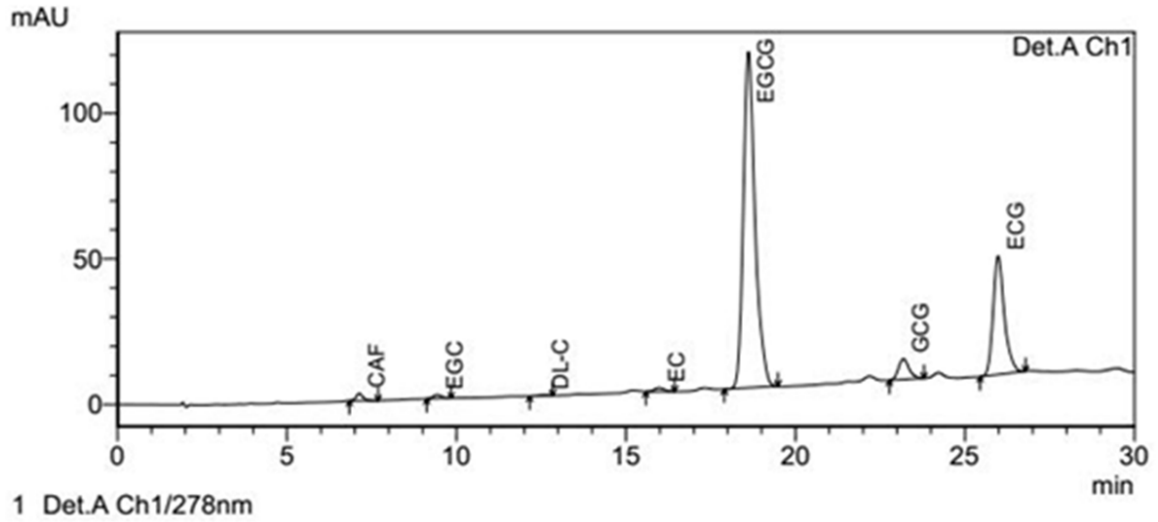
**Figure S1.** Morphology of the glomeruli in the different groups. Histologic examinations were performed after H&E staining.

GTPs protect against renal injury through jagged1/notch1 signaling



**Figure S2.** Morphology of glomeruli in the different groups. Histologic examinations were performed after PAS staining.

GTPs protect against renal injury through jagged1/notch1 signaling



1 Det.A Ch1/278nm

PeakTable

Detector A Ch1 278nm

Peak#	Name	Ret. Time	Area	Height	Area %	Conc.
1	CAF	7.126	34081	2498	0.867	0.377
2	EGC	9.425	23014	1268	0.585	2.975
3	DL-C	12.550	4899	247	0.125	0.324
4	EC	15.975	25550	1264	0.650	0.908
5	EGCG	18.616	2748284	115425	69.904	53.373
6	GCG	23.184	155077	7120	3.944	4.546
7	ECG	25.981	940629	40743	23.925	14.213
Total			3931535		100.000	

Figure S3. Chromatographic analysis of GTP purity.