

## Supporting Information

### Superior protein titers in half the fermentation time: Promoter and process engineering for the glucose-regulated *GTH1* promoter of *Pichia pastoris*

Roland Prielhofer<sup>1,§</sup>, Michaela Reichinger<sup>2</sup>, Nina Wagner<sup>2,§§</sup>, Katrien Claes<sup>2</sup>, Christoph Kiziak<sup>2</sup>, Brigitte Gasser<sup>1,3,\*</sup>, Diethard Mattanovich<sup>1</sup>

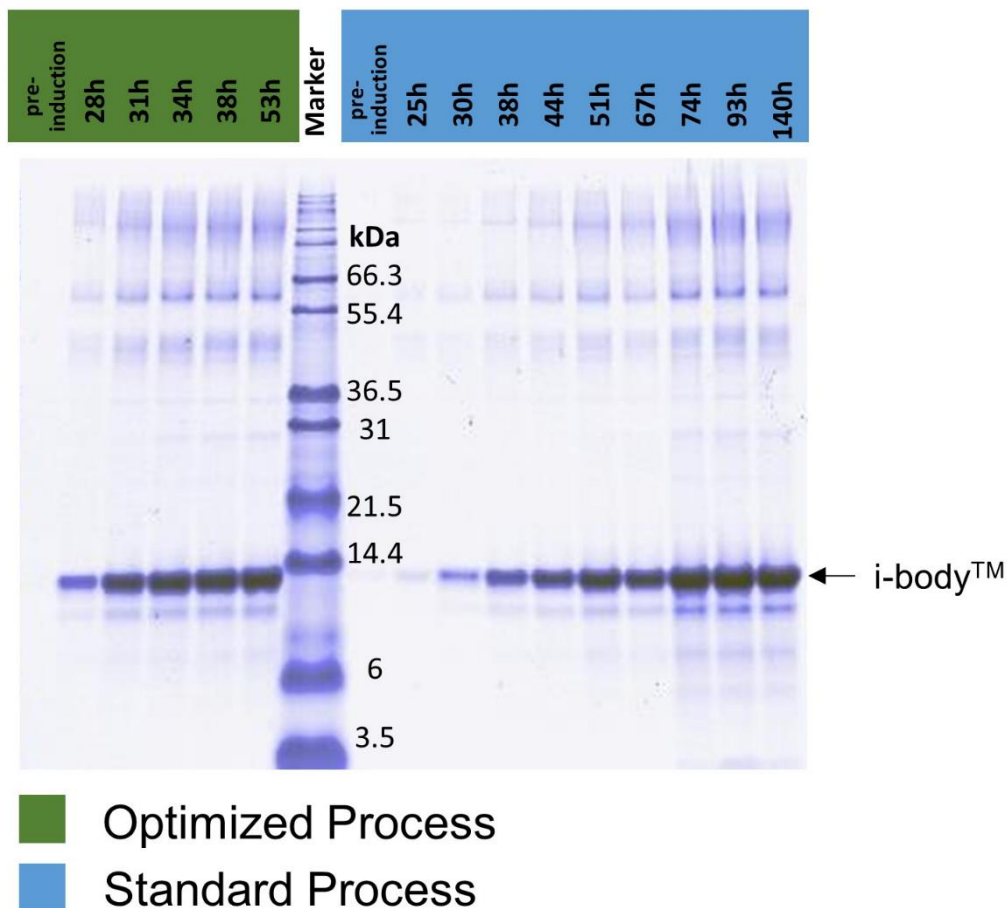
<sup>1</sup>Department of Biotechnology, BOKU - University of Natural Resources and Life Sciences Vienna, Muthgasse 18, Austria

<sup>2</sup>Lonza AG, Rottenstraße 6, Visp 3930, Switzerland

<sup>3</sup>Christian Dopplery -Laboratory for Growth-decoupled Protein Production in Yeast, Vienna, Muthgasse 18, Austria

<sup>§</sup>Current address: Austrian Centre of Industrial Biotechnology (ACIB), Vienna, Austria

<sup>§§</sup>Current address: Novartis, Basel



**Figure S1. SDS-PAGE of bioreactor supernatant samples.**

SDS-PAGE (1:2 diluted samples under reduced conditions stained with Coomassie) of  $P_{GTH1}$ -D1240 driven i-body production in the optimized and standard bioreactor process. Lanes are labelled with the respective timepoints of the optimized and standard process. Lane 7 shows the Mark12™ MW standard. The target protein i-body is indicated by an arrow.