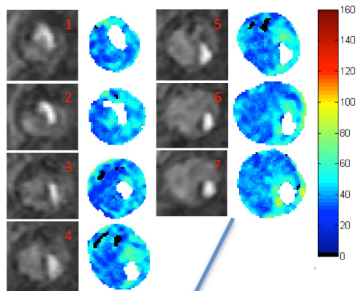
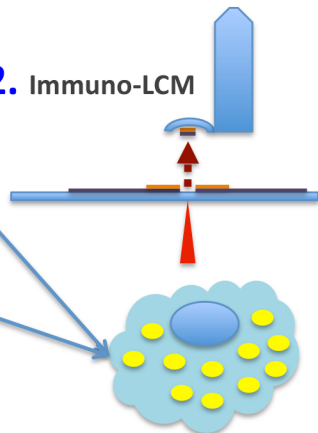


Symptomatic vs Asymptomatic plaques

1. *In vivo* MRI T2 mapping lipid quantification



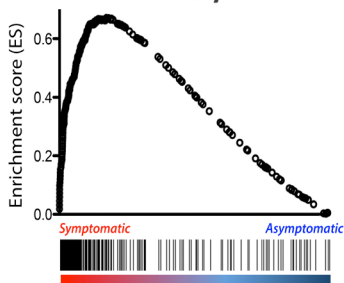
2. Immuno-LCM



Plaque macrophage isolation

4. Interferon / *STAT1* correlation with plaque lipid content

3. Transcriptomic analysis identified differentially regulated pathways / processes by GSEA



mRNA-level data (GSEA)

5. GWAS Convergence

APOE
ABCA1
APOC1
CETP
...
GWAS-level data (MAGENTA)