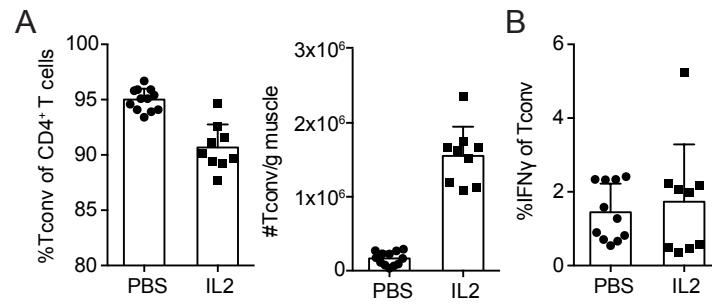
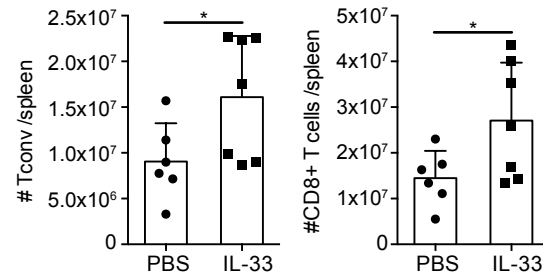


Supplemental 1



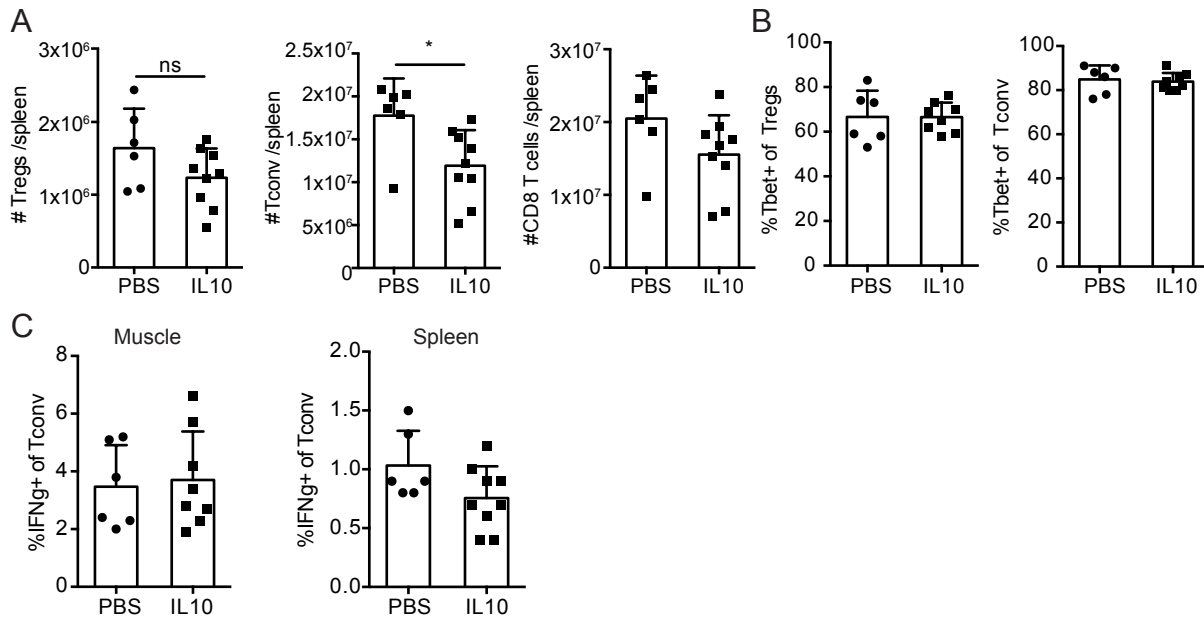
Supplemental 1 - Splenic Tconv following IL-2c treatment. (A) Frequency and absolute number of Tconv following IL2 treatment. (B) Frequency of IFN γ expressing Tconv following IL2 treatment (right). Results are cumulative of ≥ 2 independent experiments of $n \geq 4$ /group/experiment; error bars represent SD. * $p < 0.5$, ** $p < 0.01$, *** $p < 0.001$, **** $p < 0.0001$, Mann-Whitney U test (left, right), Student t test (middle).

Supplemental 2



Supplemental 2 - Splenic T cells following IL-33 treatment. Absolute number of Tconv and CD8+ T cells in the spleen following IL-33 treatment. Results are cumulative of n = 2 independent experiments of n = 3-4/group/experiment; error bars represent SD. *p < 0.5, Student's *t* test.

Supplemental 3



Supplemental 3 - Splenic T cells following IL10 treatment. (A) Absolute number of Tregs, Tconv, and CD8+ T cells in the spleen following IL10 treatment. (B) Tbet and IFN γ expression of splenic Tregs and Tconv after IL10 treatment. (C) IFN γ expression of skeletal muscle and splenic Tconv after IL10 treatment. Results are cumulative of $n = 3$ independent experiments of $n = 2-5/\text{group}/\text{experiment}$; error bars represent SD. * $p < 0.5$, Mann-Whitney U test (B, C), Student's t test (A).