

**Mean Arterial Pressure and Mortality in Patients with Distributive Shock:
A Retrospective Study Based on MIMIC-III
Vincent JL et al.**

Additional File 1

Fig. S1. Flow chart of patient selection criteria

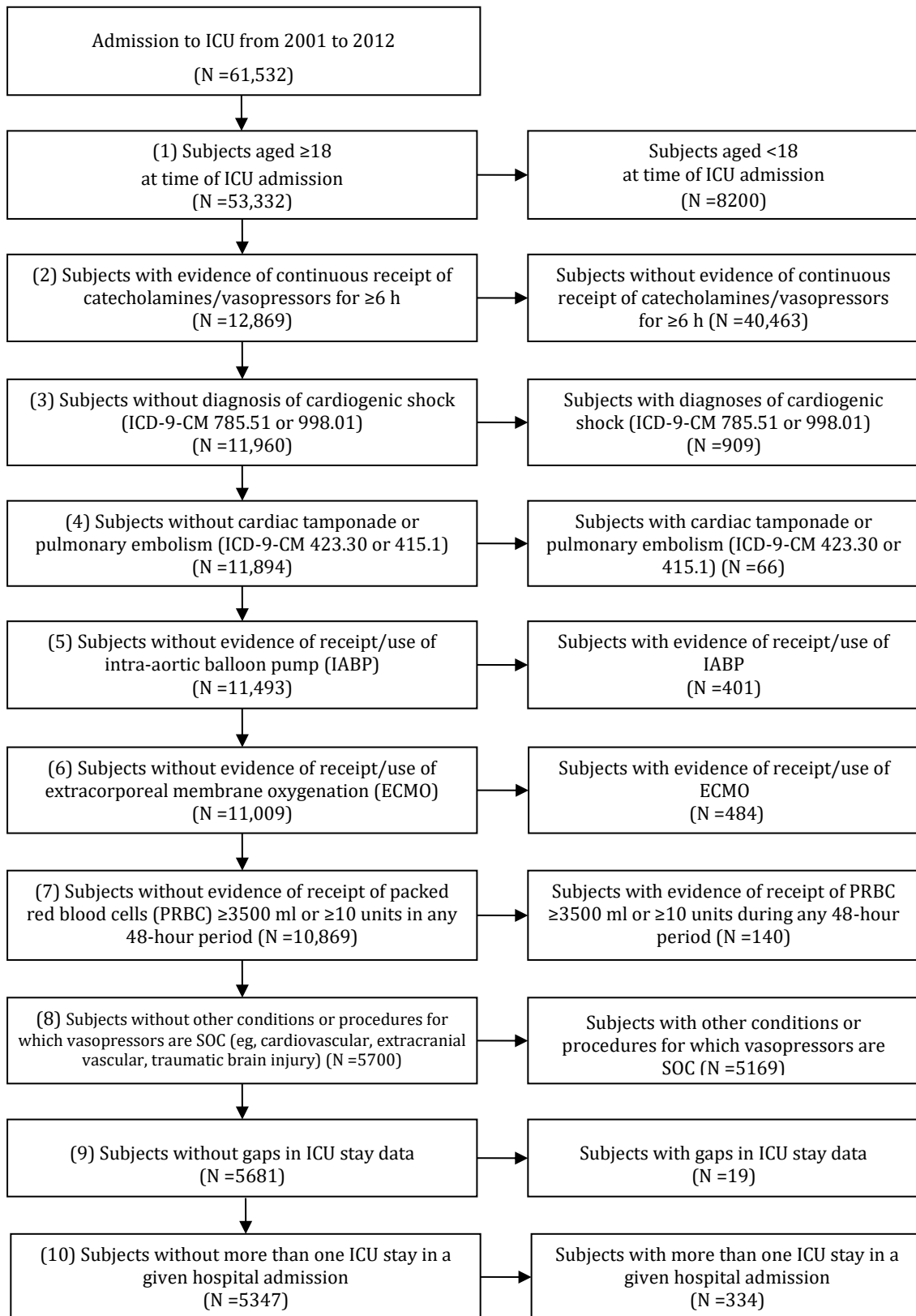
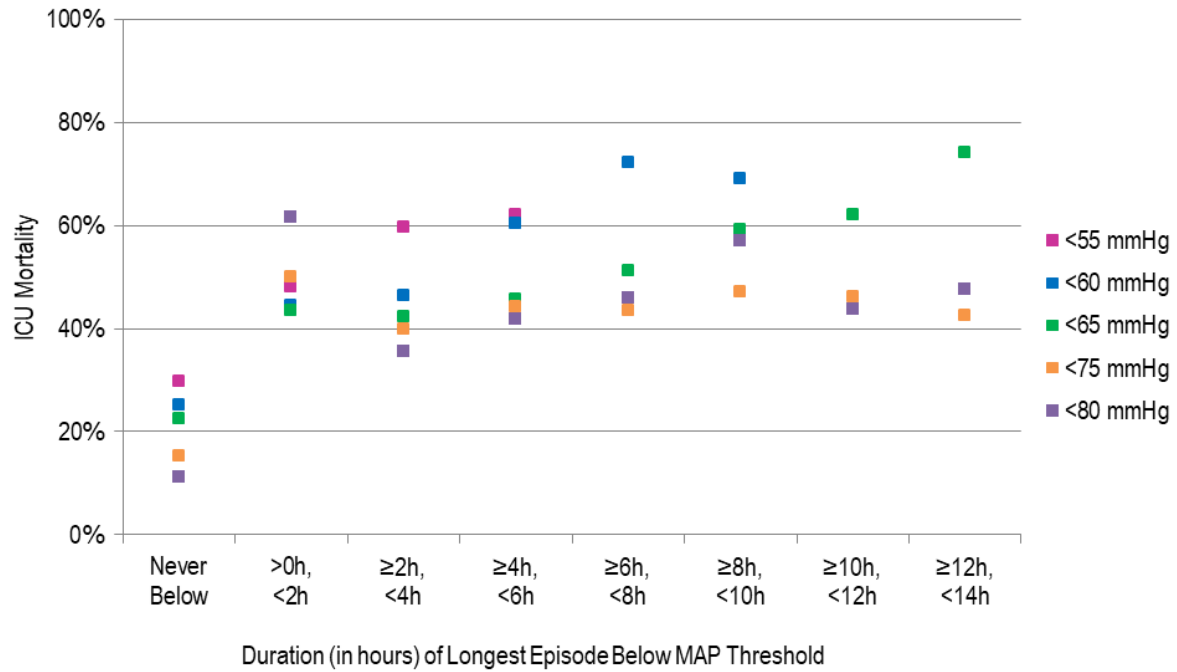


Table S1. Top five diagnosis-related groups and principal diagnoses among all patients and among the high-dose vasopressor subgroup

DRG code	DRG Description	All patients (%)	High-dose subgroup (%)
Top Five Diagnosis-Related Groups (DRG)			
DRG 871	Septicemia or severe sepsis without medical ventilation for 96+ hours with MCC	8.8	8.2
DRG 416	Septicemia age >17	7.6	9.8
DRG 475	Respiratory system diagnosis with ventilator support	4.6	4.6
DRG 870	Septicemia or severe sepsis with medical ventilation 96+ hours	3.9	5.7
DRG 853	Infectious and parasitic diseases with operating room procedure with MCC	3.2	3.9
Top Five Principal Diagnoses			
ICD-9-CM 038.9	Unspecified septicemia	18.3	22.4
ICD-9-CM 518.81	Acute respiratory failure	4.7	3.9
ICD-9-CM 038.42	Septicemia due to <i>Escherichia coli</i>	2.3	2.6
ICD-9-CM 507.0	Pneumonitis due to inhalation of food or vomitus	2.1	^a
ICD-9-CM 038.11	Methicillin-susceptible <i>Staphylococcus aureus</i> septicemia	1.9	2.6
ICD-9-CM 038.49	Other septicemia due to Gram-negative organisms	^a	2.4

^aNot included as this diagnosis is not in the top five for the group
MCC = major complications/comorbidities

Fig. S2. ICU mortality by duration of longest episode with mean arterial pressure (MAP) <80 mmHg (mauve), <75 mmHg (orange), <65 mmHg (green), 60 mmHg (blue) and 55 mmHg (pink) in all patients in the high-dose vasopressor subgroup



Number of Cases

MAP <55 mmHg	422	1107	312	87	—	—	—	—
MAP <60 mmHg	171	909	504	195	90	52	—	—
MAP <65 mmHg	58	457	558	321	199	118	87	54
MAP <75 mmHg	13	86	165	222	218	193	145	127
MAP <80 mmHg	9	39	76	124	148	156	142	132

Fig. S3. ICU mortality by duration of longest episode with mean arterial pressure (MAP) <80 mmHg (mauve), <75 mmHg (orange), 65 mmHg (green), 60 mmHg (blue) and 55 mmHg (pink) among patients alive 24 hours after ICU admission

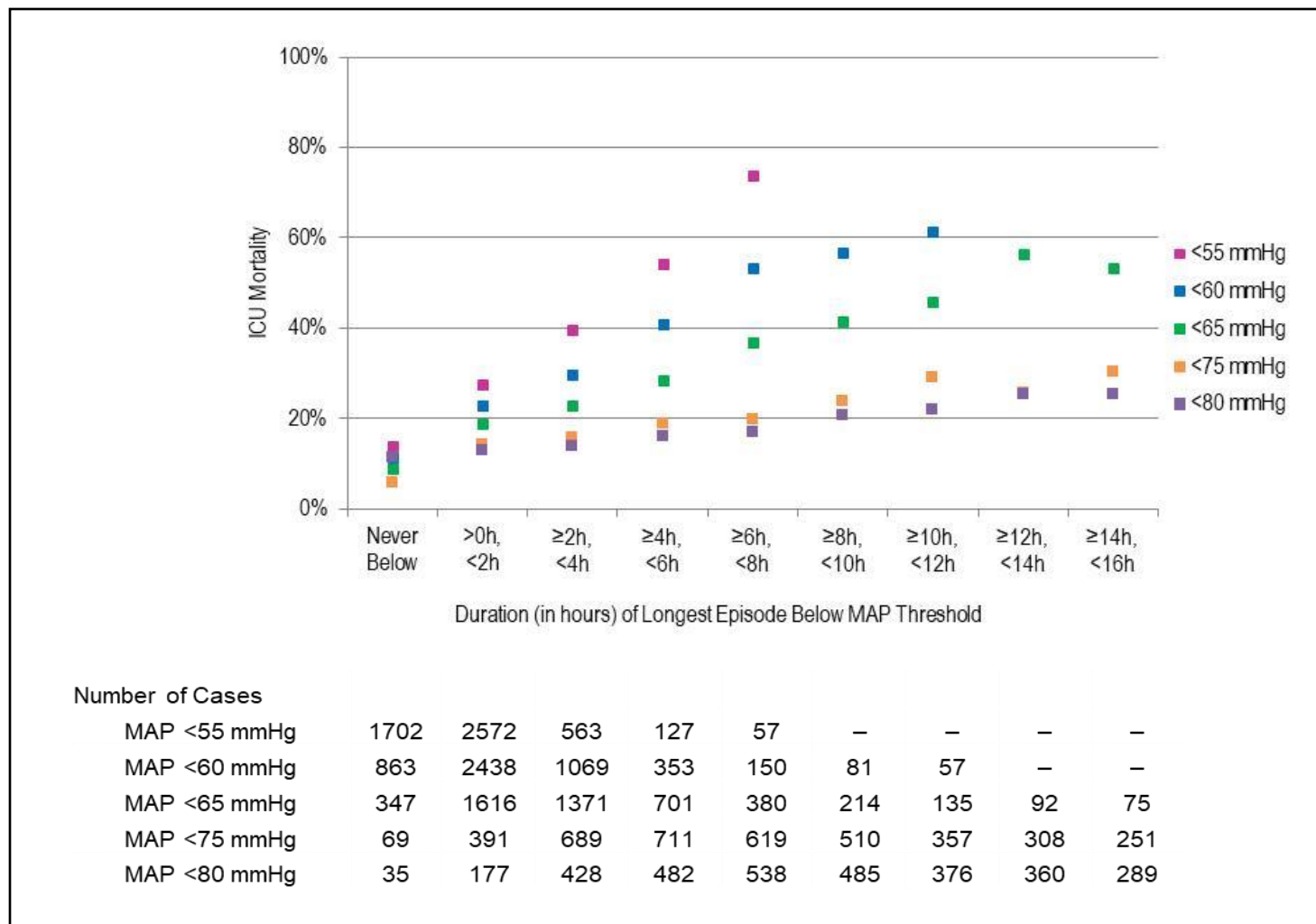
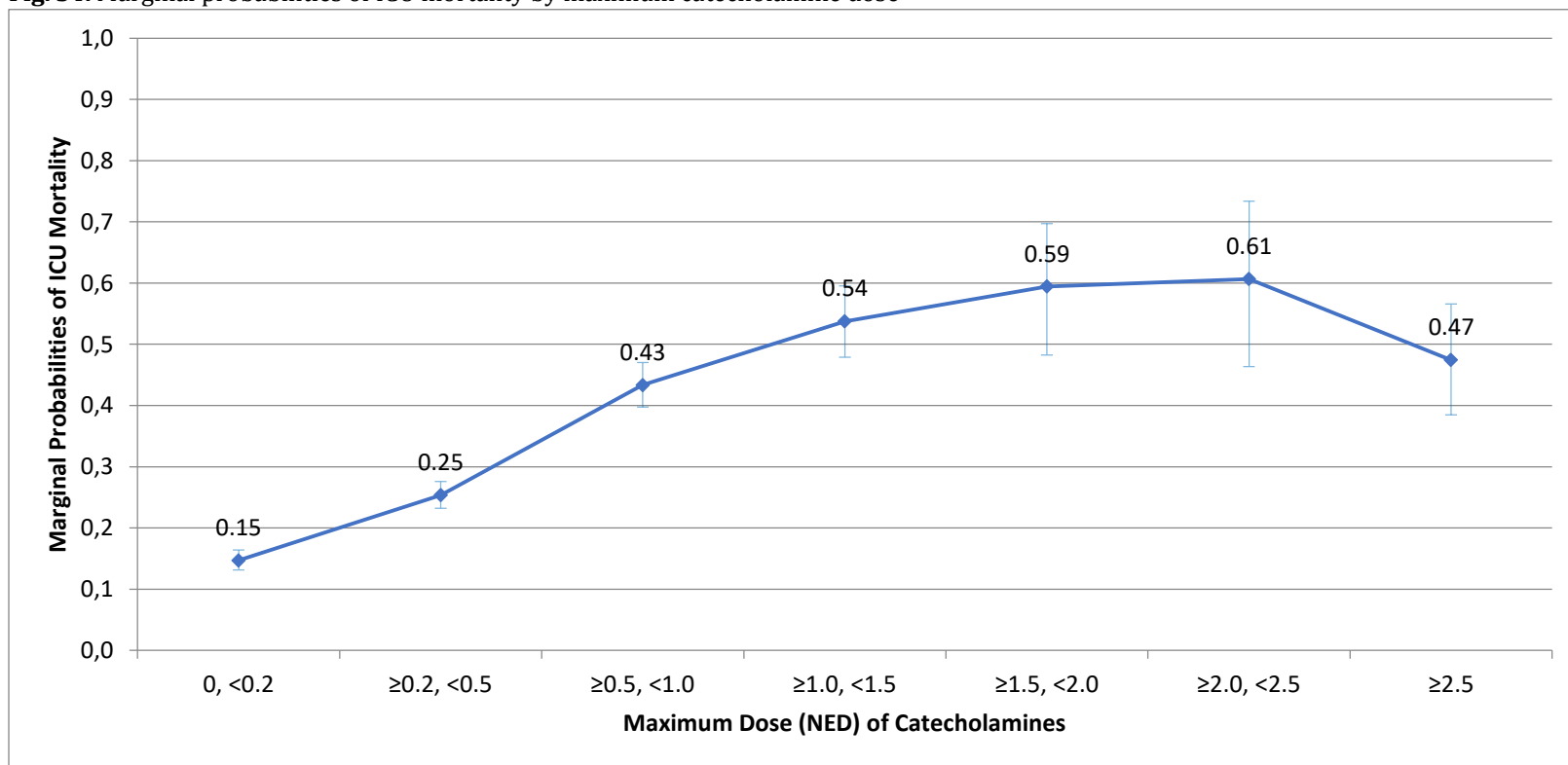


Fig. S4. Marginal probabilities of ICU mortality by maximum catecholamine dose



NED: norepinephrine-equivalent dose