

Gabapentin and pregabalin and risk of atrial fibrillation in the elderly: A population-based cohort study in an electronic prescription database

Drug Safety

L Ortiz de Landaluce, I.E.,¹ P Carbonell, Econ,¹ C Asensio, M.D.,² N Escoda, Pharm.D.,¹ P López, Pharm.D.,¹ J-R Laporte, M.D.²

¹ Gerència de Prestacions Farmacèutiques i Accés al Medicament
Servei Català de la Salut
Travessera de Les Corts 131-159
Edifici Olimpia
08028 Barcelona

² Fundació Institut Català de Farmacologia (FICF)
HU Vall d'Hebron
Universitat Autònoma de Barcelona
WHO Collaborating Centre for Research & Training in Pharmacoepidemiology
P Vall d'Hebron 119-129
08035 Barcelona

Correspondence:

Prof. Joan-Ramon Laporte
email: jrl@icf.uab.cat

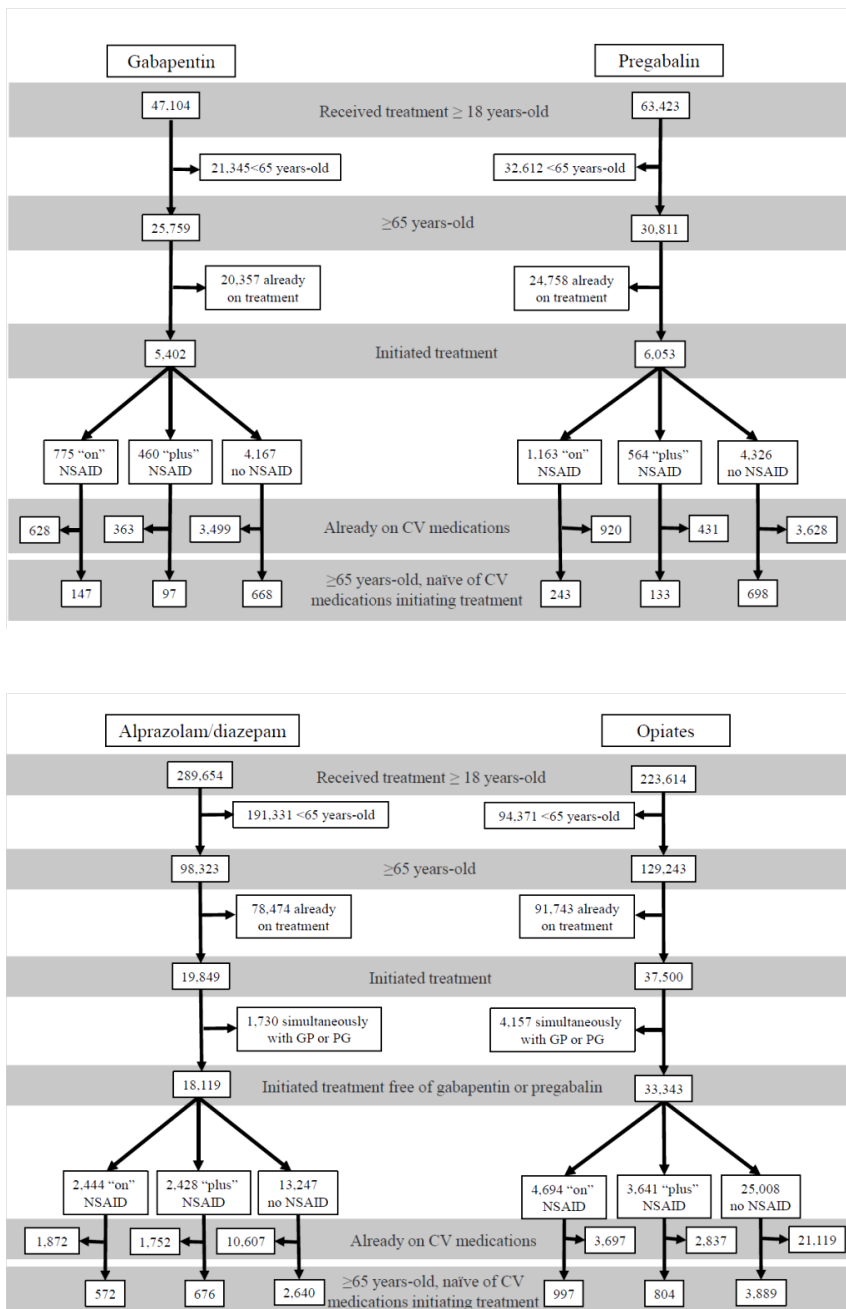


Figure S1. Patients included in the study and exclusions due to age, exposure to gabapentinoids or previous use of cardiovascular drugs in the 6 months before, and concomitant use with NSAIDs. "on" NSAID: the drug was dispensed to a patient who was already on an NSAID. "plus" NSAID: the drug of interest and the NSAID were prescribed together for first time, "no NSAID": the patient had not been on an NSAID in the 6 months before, neither at the start of treatment with the drug of interest.

Table S1. Use of drugs for atrial fibrillation (secondary variable [OAC/APA] by age and sex.

	Age (years)			Sex	
	65-74	75-84	≥84	Male	Female
Compared to opiate analgesics					
Opiates	1.00 (Reference category) (44/2,294)	1.00 (Reference category) (72/1,129)	1.00 (Reference category) (32/466)	1.00 (Reference category) (57/1,242)	1.00 (Reference category) (191/2,647)
Gabapentin	2.70 (1.61–4.53) (20/386)	2.01 (1.32–3.07) (26/203)	2.35 (1.27–4.37) (12/79)	2.22 (1.42–3.49) (25/245)	2.27 (1.54–3.33) (33/423)
Pregabalin	2.03 (1.17–3.53) (17/437)	1.67 (1.04–2.66) (20/189)	3.44 (1.99–5.95) (16/72)	1.69 (1.02–2.79) (19/245)	2.18 (1.49–3.20) (34/453)
GP/PG	2.34 (1.52–3.60) (37/823)	1.84 (1.29–2.62) (46/392)	2.87 (1.79–4.61) (28/151)	1.92 (1.31–2.80) (44/490)	2.22 (1.64–3.02) (67/876)
Compared to benzodiazepines					
AL/DZ	1.00 (Reference category) (60/1,884)	1.00 (Reference category) (43/541)	1.00 (Reference category) (25/215)	1.00 (Reference category) (52/718)	1.00 (Reference category) (82/1,922)
Gabapentin	1.63 (0.91–2.67) (20/386)	1.64 (1.03–2.60) (26/203)	1.31 (0.69–2.47) (12/79)	1.41 (0.89–2.22) (25/245)	1.83 (1.24–2.70) (33/423)
Pregabalin	1.22 (0.72–2.07) (17/437)	1.36 (0.82–2.24) (20/189)	1.91 (1.08–3.37) (16/72)	1.07 (0.65–1.77) (19/245)	1.76 (1.20–2.59) (34/453)
GP/PG	1.41 (0.94–2.11) (37/823)	1.50 (1.01–2.23) (46/392)	1.59 (0.97–2.62) (28/151)	1.22 (0.83–1.79) (44/490)	1.79 (1.31–2.45) (67/876)

Table S2. Use of drugs for atrial fibrillation. Secondary analysis including all patients initiating treatment with each drug of interest, independently of concomitant use of other study drugs.

	OAC+AA ^a	OAC/APA+AA ^b	AA ^c	OAC/APA ^d
Compared to opiate analgesics				
Opiates	1.00 (Reference category) (8/5,690)	1.00 (Reference category) (14/5,690)	1.00 (Reference category) (23/5,690)	1.00 (Reference category) (196/5,690)
Gabapentin	3.12 (0.94–10.34) (4/912)	2.67 (1.03–6.94) (6/912)	2.44 (1.13–5.26) (9/912)	1.97 (1.50–2.60) (62/912)
Pregabalin	1.99 (0.53–7.48) (3/1,074)	2.27 (0.87–5.90) (6/1,074)	1.61 (0.69–3.75) (7/1,074)	1.73 (1.31–2.28) (64/1,074)
GP/PG ^e	2.51 (0.91–6.90) (7/1,986)	2.46 (1.14–5.30) (12/1,986)	1.99 (1.06–3.76) (16/1,986)	1.48 (1.55–2.29) (126/1,986)
Compared to benzodiazepines				
AL/DZ ^f	1.00 (Reference category) (10/3,888)	1.00 (Reference category) (12/3,888)	1.00 (Reference category) (13/3,888)	1.00 (Reference category) (134/3,888)
Gabapentin	3.11 ((0.94–10.32) (4/912)	2.13 (0.80–5.06) (6/912)	2.95 (1.27–6.88) (9/912)	2.02 (1.51–2.71) (62/912)
Pregabalin	1.98 (0.53–7.47) (3/1,074)	1.81 (0.68–4.81) (6/1,074)	1.95 (0.78–4.87) (7/1,074)	1.77 (1.33–2.37) (64/1,074)
GP/PG ^e	2.49 (0.91–6.87) (7/1,986)	1.96 (0.88–4.35) (12/1,986)	2.41 (1.11–5.00) (16/1,986)	1.89 (1.49–2.39) (126/1,986)

^a OAC+AA: Patients who started treatment with an oral anticoagulant plus an antiarrhythmic drug, in the three months after treatment initiation with the study drug.

^b OAC/APA+AA: Patients who started treatment with an oral anticoagulant or an antiplatelet agent plus an antiarrhythmic drug, in the three months after treatment initiation with the study drug.

^c AA: Patients who started treatment with an antiarrhythmic drug, in the three months after treatment initiation with the study drug.

^d OAC: Patients who started treatment with an oral anticoagulant, in the three months after treatment initiation with the study drug.

^e GP/PG: gabapentin or pregabalin.

^f AL/DZ: alprazolam or diazepam.