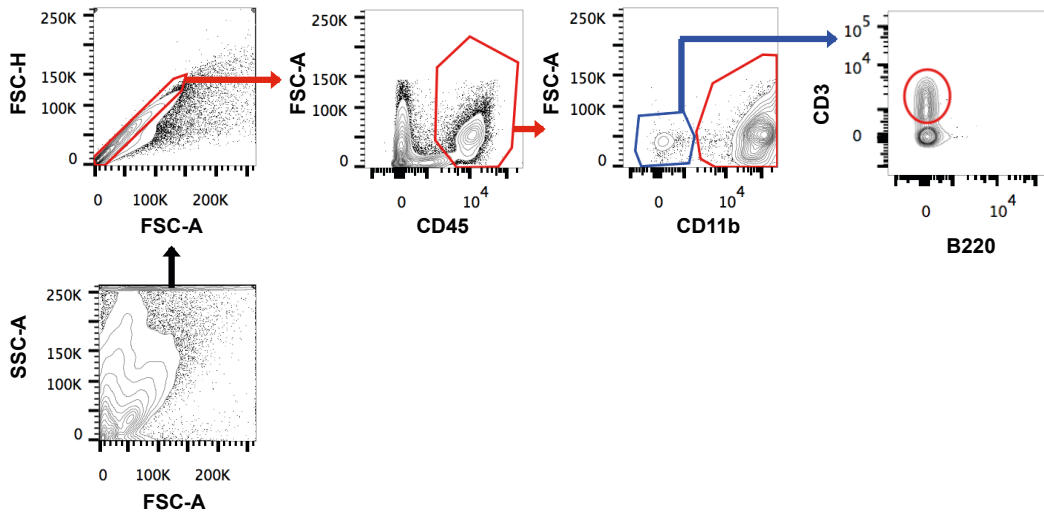
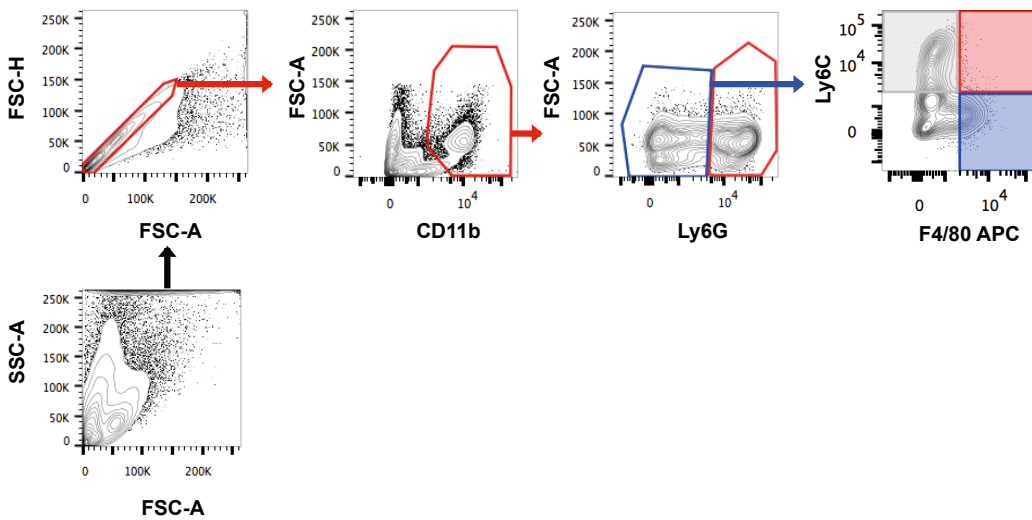


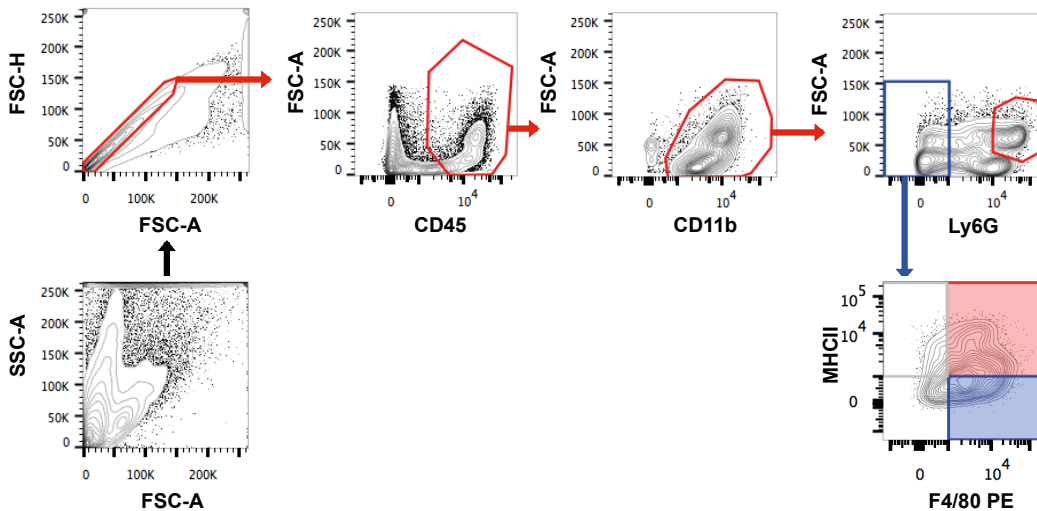
Stained in Antibody Mix1



Stained in Antibody Mix2



Stained in Antibody Mix3



Supplement Figure 5 Representative gating strategy for flow cytometry

Ankles of wt \rightarrow wt and wt \rightarrow GR^{dim} mice were digested and stained with three different antibody mixes to be analysed by flow cytometry. Representative pictures of the gating strategy of the flow cytometry plots are shown (Plots of cells from a representative wt \rightarrow wt PBS treated mouse are displayed for all three mixes). Conjugates and antibodies are found in the supplementary methods part.