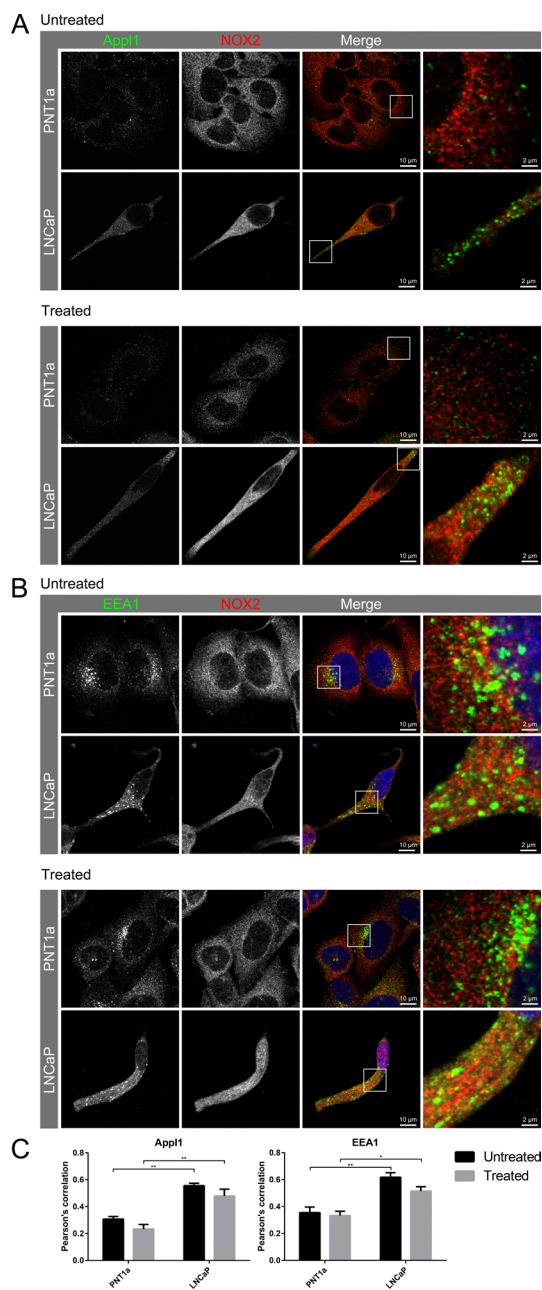


# NOX2 oxidase expressed in endosomes promotes cell proliferation and prostate tumour development

## SUPPLEMENTARY MATERIALS



**Supplementary Figure 1: Co-location of NOX2 with endosome markers in response to VEGF-A treatment.** (A) Confocal fluorescent images showing co-located NOX2 (red) with endosome markers (green) App1 and EEA1 in non-malignant (PNT1A) and malignant (LNCaP) human prostate cancer cells and in LNCaP post-VEGF-A treatment. (B) Graphs show the degree of co-location of NOX2 with the endosome markers App1 and EEA1 in VEGF-A-treated and untreated PNT1a and LNCaP cells. Data is representative of 6 randomly selected cells and are shown as mean  $\pm$ SEM. \* $P < 0.05$ , \*\* $P < 0.01$  for two-way ANOVA.