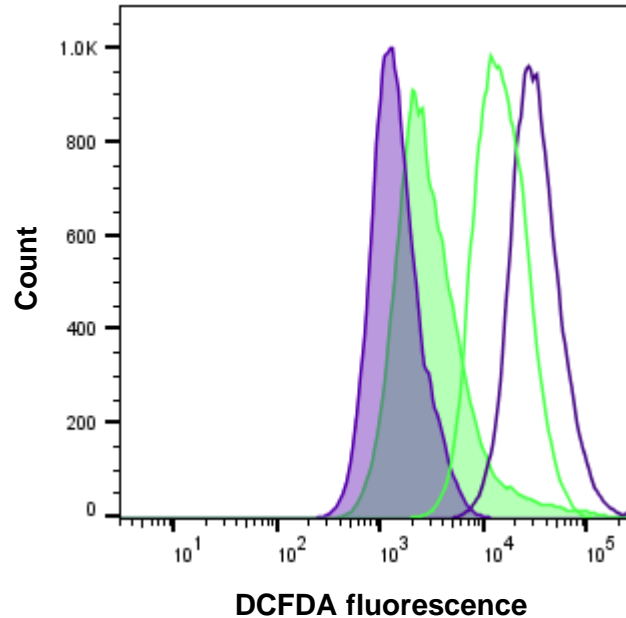
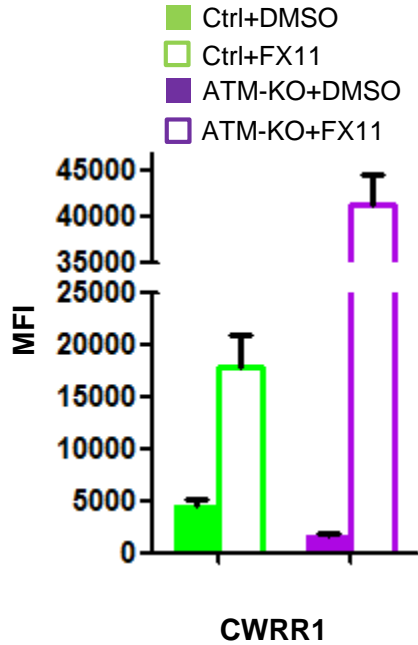
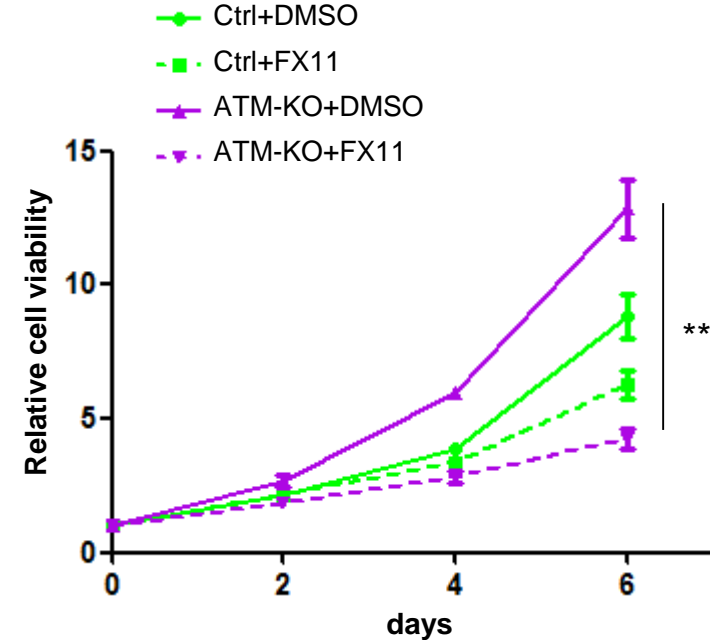


A**B**

Supplementary Figure 4. LDHA inhibitor FX11 suppressed ATM-deficient CWRR1 cell growth. **(A)** Intracellular ROS production was detected with DCFDA fluorescence and monitored by flow cytometry at 72 hours post-treatment with either DMSO or 3 μ M FX11. *Left*, median fluorescent intensity. *Right*, the representative image of histograms of ROS. **(B)** Cell viability of CWRR1/Ctrl and CWRR1/ATM-KO cells treated with either DMSO or FX11 was determined by MTS assay at the indicated time points ($n = 3$ replicates). ** $p < 0.01$ by two-tailed Student's t -test.