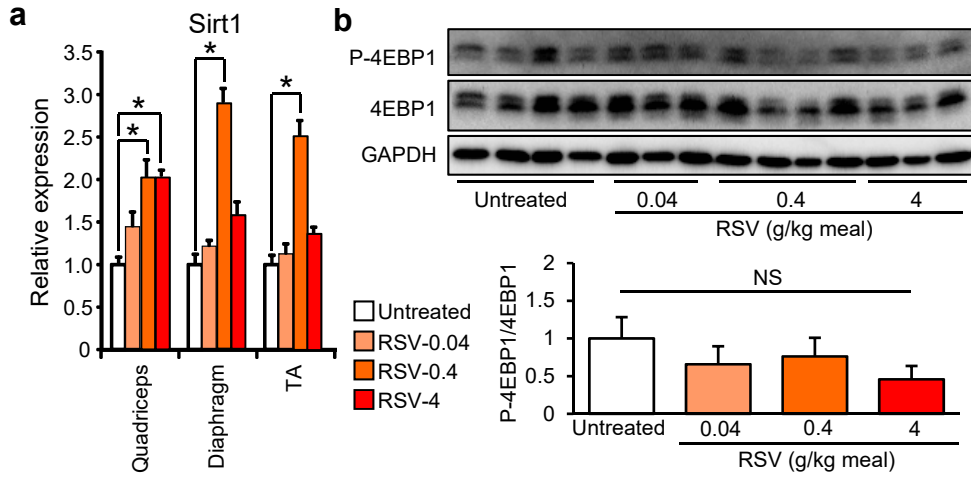
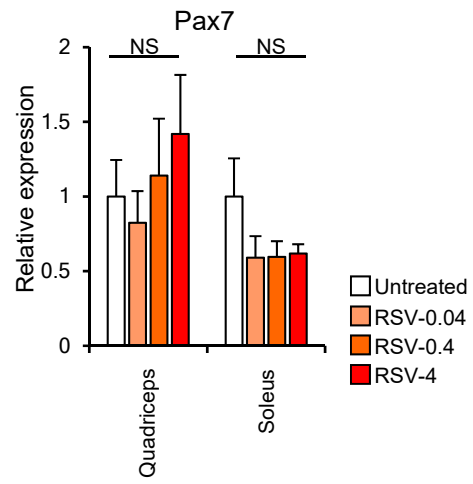


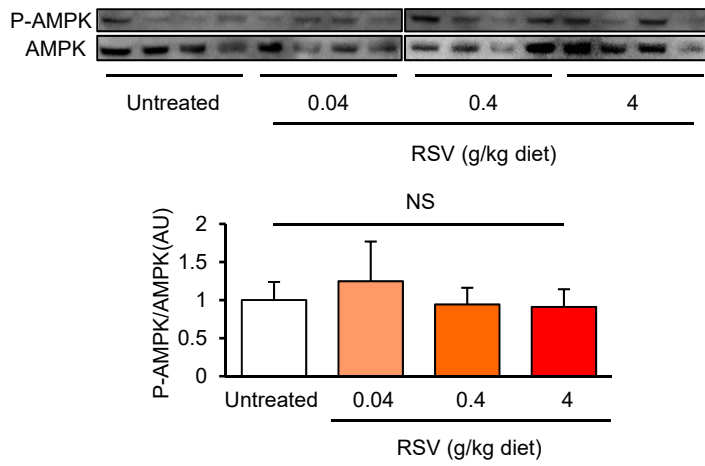
**Supplemental Figure 1.**



## Supplemental Figure 2.



### Supplemental Figure 3.



**Supplemental Table 1. Primer sequences for quantitative PCR.**

<b>Gene</b>	<b>Forward</b>	<b>Reverse</b>
<b>Map1lc3b</b>	5'-CGTCCTGGACAAGACCAAGT-3'	5'-ATTGCTGTCCCGAATGTCTC-3'
<b>Bnip3</b>	5'-TCCACTAGCACCTTCTGATGA-3'	5'-GAACACCGCATTACAGAACA-3'
<b>Atg5</b>	5'-TTGGAACATCACAGTACATTT-3'	5'-AACGAAATCCATTTTCTTCTG-3'
<b>Becn1</b>	5'-CTGACAGACAAATCTAAGGAG	5'-AATAGGAGCCGCCACTGCCTC-3'
<b>p62</b>	5'-CCTTGCCCTACAGCTGAGTC-3'	5'-CACACTCTCCCCACATTCT-3'
<b>Pink1</b>	5'-TGAGGAGCAGACTCCCAGTT-3'	5'-AGTCCCCTCCACAAGGATG-3'
<b>Parkin</b>	5'-TGGAAAGCTCCGAGTTCAGT-3'	5'-CCTTGTCTGAGGTTGGGTGT-3'
<b>Lamp1</b>	5'-ACATCAGCCCAAATGACACA-3'	5'-GGCTAGAGCTGGCATTTCATC-3'
<b>Tfeb</b>	5'-AACAGTGCTCCCAACAGTCC-3'	5'-GGCGCATAATGTTGTCAATG-3'
<b>Fundc1</b>	5'-CCCCCTCCCAAGACTATGAA-3'	5'-CCACCCATTACAATCTGAGTAGC-3'
<b>Bcl2l13</b>	5'-CTCAGCCAGCAGTGACATA-3'	5'-GGCACCAAAGCTTATTCCA-3'
<b>18s</b>	5'-CGGACAGGATTGACAGATTG-3'	5'-CAAATCGCTCCACCAACTAA-3'
<b>Sirt1</b>	5'-GACGCTGTGGCAGATTGTTA-3'	5'-GGAATCCCACAGGAGACAGA-3'

**Supplemental Table 2. Antibodies used in the present study.**

Antibody	Source	Catalog number
anti-LC3AB	Cell Signaling Technology	12741
anti-phospho-Ser65-4EBP1	Cell Signaling Technology	9451
anti-total 4EBP1	Cell Signaling Technology	9452
anti-ubiquitin	Cell Signaling Technology	3936
anti-Phospho-AMPK $\alpha$ (Thr172) (40H9)	Cell Signaling Technology	2535
anti-AMPK $\alpha$ Antibody	Cell Signaling Technology	2532
anti-p62	Progen	GP62-C
anti-GAPDH	Sigma-Aldrich	G8795
anti- $\alpha$ -tubulin	Sigma-Aldrich	T5168