

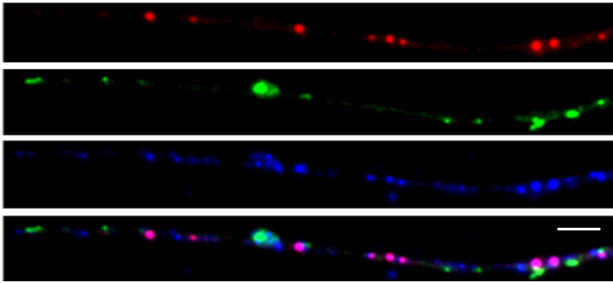
# Supplemental Materials

*Molecular Biology of the Cell*

Shi et al.

Supplementary figure S1

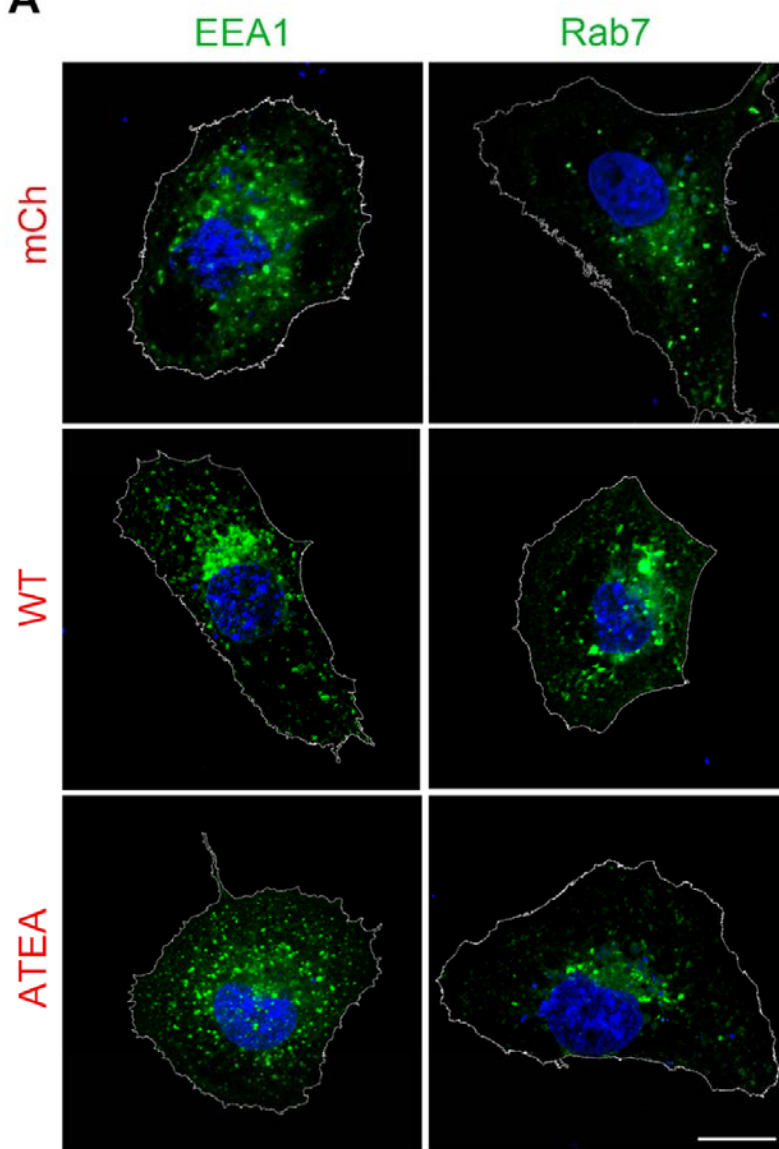
*mCh-Caly* *MitoTracker*  $\alpha$ -DIC



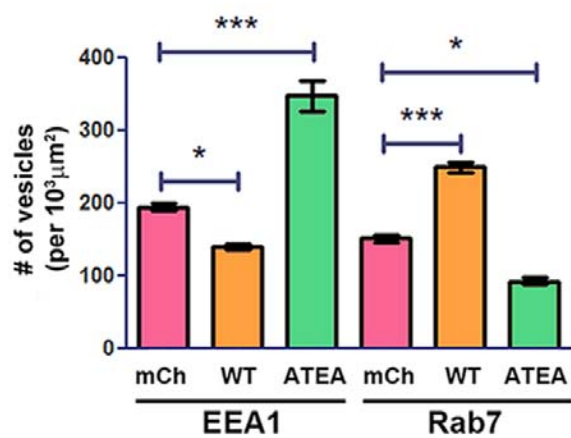
**Supplemental Figure 1. Lack of overlap between Caly and MitoTracker stained mitochondria.** DRG axon was transfected by mCh-Caly-WT (red) and stained with MitoTracker (green) and DIC antibody (blue). Bar=10  $\mu$ m.

Supplementary figure S2

**A**



**B**



**Supplemental Figure 2. LE/LRO Biogenesis in COS7 cells.** A) Labeling of LE/LROs in COS7 cells transfected with mCherry vector, mCh-Caly-WT, or mCh-Caly-ATEA by EEA1 or Rab7 antibodies. B) Number of EEA1 and Rab7 antibody labeled EE/SEs and LEs in Cos-7 cells transfected with mCherry vector, mCh-Caly-WT, or mCh-Caly-ATEA. Fewer EEA1 labeled EE/SEs were detected per unit area in Caly-WT transfected cells, whereas more were present in Caly-ATEA expressing cells. In contrast, more Rab7 labeled LEs were found per unit area in Caly-WT cells, but fewer in Caly-ATEA cells. Bar graphs show the mean and SEM of EEA1 and Rab7 vesicle number per  $10^3\mu\text{m}^2$  area in the cells. Data plotted in bar graphs corresponds to results obtained in three independent experiments, from at least 7 cells per experiment for each group. \*  $p < 0.05$ , \*\*  $p < 0.01$ , \*\*\*  $p < 0.001$ ; bar = 10  $\mu\text{m}$ .