

Supplementary Online Content

Onega T, Barnhill RL, Piepkorn MW, et al. Accuracy of Digital Pathologic Analysis vs Traditional Microscopy in the Interpretation of Melanocytic Lesions. *JAMA Dermatol*. Published online August 15, 2018. doi:10.1001/jamadermatol.2018.2388

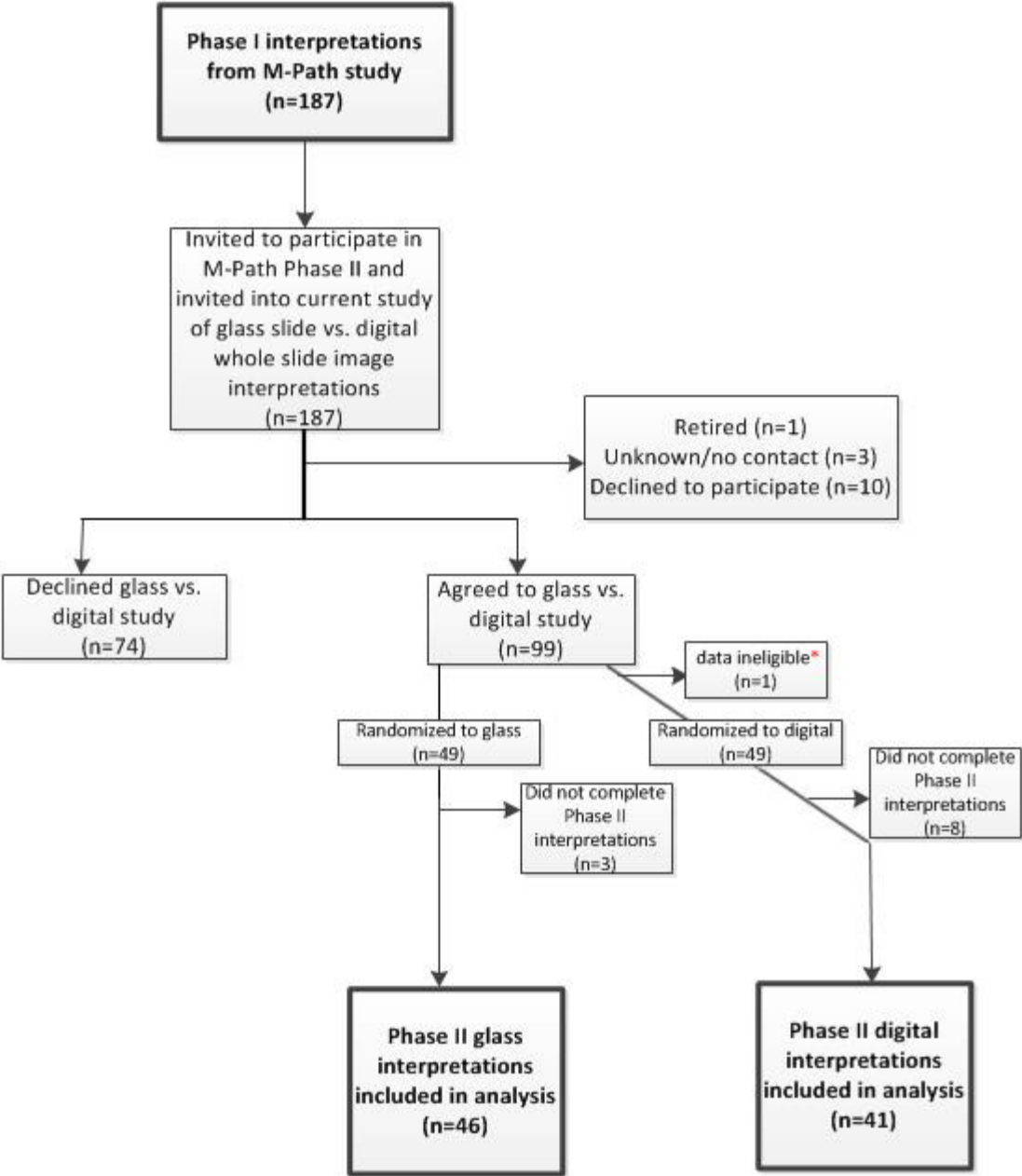
eFigure 1. Pathologist Recruitment for Digital v. Glass Study

eFigure 2. Intraobserver reproducibility (% agreement) by phase II medium (glass or digital) for pathologists who interpreted the same cases in Phase I in glass format.

eTable. Odds ratio (OR) estimates and 95% confidence intervals for the effect of digital whole slide image vs glass slide interpretation on various measures of assessment certainty.

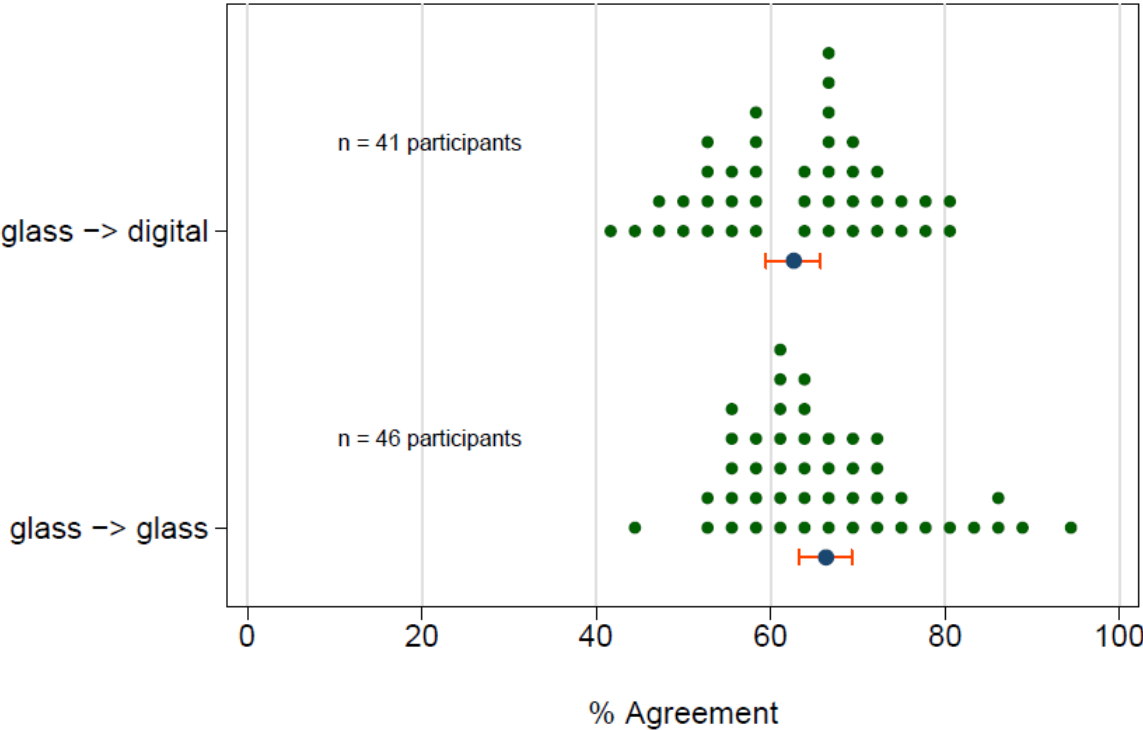
This supplementary material has been provided by the authors to give readers additional information about their work.

eFigure 1. Pathologist Recruitment for Digital v. Glass Study



* One participant is excluded from analysis due to requesting to be placed into the digital arm

eFigure 2. Intraobserver reproducibility (% agreement) by phase II medium (glass or digital) for pathologists who interpreted the same cases in Phase I in glass format.



eTable. Odds ratio (OR) estimates and 95% confidence intervals for the effect of digital whole slide image vs glass slide interpretation on various measures of assessment certainty.

Assessment certainty measures	Total case interpretations n (col %)	Digital WSI n (col %)	Glass n (col %)	OR (95% CI)	P-value	*Adjusted	
						OR (95% CI)	P-value
Level of diagnostic difficulty Low (1-3) High (4-6)	2,041 (65) 1,091 (35)	916 (62) 560 (38)	1,125 (68) 531 (32)	-ref- 1.30 (0.84, 2.01)	0.25	1.14 (0.74, 1.75)	0.55
Confidence in assessment High (1-3) Low (4-6)	2,447 (78) 685 (22)	1,102 (75) 374 (25)	1,345 (81) 311 (19)	-ref- 1.47 (0.86, 2.51)	0.16	1.25 (0.75, 2.10)	0.39
Would ask for a second opinion No Yes	1,744 (56) 1,388 (44)	823 (56) 653 (44)	921 (56) 735 (44)	-ref- 0.99 (0.63, 1.58)	0.98	0.87 (0.55, 1.39)	0.56
Case is borderline between two diagnoses No Yes	2,363 (76) 767 (24)	1,069 (72) 407 (28)	1,296 (78) 360 (22)	-ref- 1.37 (0.97, 1.94)	0.075	1.37 (0.96, 1.96)	0.084

* From models which include a covariate to adjust for Dermatopathology board certification or fellowship training.