

## Supplementary Online Content

Poon SJ, Schuur JD, Mehrotra A. Trends in Visits to Acute Care Venues for Treatment of Low-Acuity Conditions in the United States From 2008 to 2015. *JAMA Intern Med.* Published online September 04, 2018. doi:10.1001/jamainternmed.2018.3205

eMethods 1. Identifying visits to acute care venues

eTable 1. Proportion of total visits with low-acuity diagnosis codes by venue, 2008 vs 2015

eTable 2. Selected characteristics of US commercial health care plan members less than 65 years of age who sought treatment for low-acuity conditions, 2008 and 2015

eTable 3. Change in visits per 1000 members by venue and by category of low-acuity condition from 2008 to 2015

eFigure 1. Visits to acute care venues for treatment of low-acuity conditions by age, 2008-2015

eFigure 2. Visits to acute care venues for treatment of low-acuity conditions by diagnostic cost group score, 2008-2015

eFigure 3. Visits to acute care venues for all conditions, 2008-2015

eFigure 4. Association between change in utilization of emergency department (ED) vs urgent care centers for the treatment of low-acuity conditions by hospital referral region, 2010-2015

eAppendix A. Tax identification numbers (TINs) and organizational national provider identifiers (NPIs) for urgent care centers, retail clinics, and telemedicine

eAppendix B. ICD-9 and ICD-10 codes for conditions treated in urgent care centers and retail clinics

This supplementary material has been provided by the authors to give readers additional information about their work.

## **eMethods 1. Identifying Visits to Acute Care Venues**

### *Urgent care centers and retail clinics*

In addition to POS codes, we also used NPIs and TINs to identify urgent care centers, retail clinics, and direct-to-consumer telemedicine companies. We employed this additional identification strategy because while the POS code for urgent care was relatively sensitive, identifying 89% of urgent care visits as defined by this combined method, the POS code for retail clinics was very insensitive as it was almost never used, identifying only 1% of retail clinic visits. Two basic types of NPIs exist; individual and organizational. Individual NPIs are used when a claim is submitted by an individual clinician and payment is received directly by that individual. Organizational NPIs are used for corporations and other business entities (i.e. hospitals, urgent care centers, retail clinics) to identify that entity as the payee. Claims submitted using an organizational NPI are typically submitted along with an individual NPI to identify the individual who provided the service. Finally, individuals and businesses who submit claims also have a TIN.

### *Direct-to-consumer telemedicine*

In addition to using NPIs, TINs, and the CPT code 99444 to define telemedicine visits, we also considered including the GT modifier, which allows billing for claims provided “via interactive audio and video telecommunications system.” However, the majority were for mental health-related conditions, so we did not consider use of the GT modifier to be a condition for classifying a visit as a telemedicine visit. As part of our definition of telemedicine visits, we also considered including the CPT code 98969, which are “e-visits” for care provided by a qualified nonphysician healthcare professional. The vast majority of visits with CPT code 98969 in our population were for chronic disease prevention and management, so we did not use this code to define a telemedicine visit. However, some of the telemedicine visits in our study as defined by NPIs and TINs did use CPT code 98969.

### *ED visits*

To test the reliability of the POS codes used to classify a visit as an ED visit (POS code = emergency room or CMS POS code = 23), we determined that only 0.05% of visits with ED-specific procedural codes (CPT codes 99281-5) did not have these POS codes. We identified ED visits using the provider claim and included all ED visits regardless of whether the patient was admitted or not-admitted. Since a single visit was defined by claims that had the same patient identifier, date of service and insurer POS code, we counted only one ED visit per day. To assess the magnitude of multiple ED visits on the same day that would not be accounted for by this method, we examined the frequency of visits that used coding modifier 27, which indicates multiple outpatient hospital encounters on the same day. We found that same-day ED visits comprised only 0.03% of total ED visits.

**eTable 1. Proportion of Total Visits with Low-Acuity Diagnosis Codes by Venue, 2008 vs 2015**

	<b>2008, %</b>	<b>2015, %</b>	<b>Change, %</b>
ED	38.4	28.8	-9.6
Urgent Care	71.5	65.4	-6.1
Retail Clinic	61.8	57.9	-3.9
Telemedicine <sup>a</sup>	---	68.7	---

<sup>a</sup>Data for 2008 excluded due to very few telemedicine visits

**eTable 2. Selected Characteristics of US Commercial Health Care Plan Members Less Than 65 Years of Age Who Sought Treatment for Low-Acuity Conditions, 2008 and 2015**

	Emergency Department		Urgent Care		Retail Clinic		Telemedicine <sup>a</sup>
	2008	2015	2008	2015	2008	2015	2015
Age, mean (SD), y	28.6 (18.2)	31.0 (18.6)	29.3 (17.3)	31.2 (17.3)	31.3 (16.2)	32.3 (16.1)	36.5 (15.0)
Female, %	51.7	54.4	57.4	58.8	64.4	64.6	68.8
DxCG score <sup>b</sup> , %							
<0.5	30.7	25.3	45.9	43.1	52.0	47.3	42.6
0.5-0.99	23.6	20.6	22.9	22.2	20.9	21.6	21.5
1-3	27.0	28.0	21.7	23.4	19.7	21.9	24.9
>3	18.7	26.1	9.5	11.3	7.4	9.1	11.0
Median household income quartile <sup>c</sup> , %							
1 (low)	28.6	30.8	17.0	20.0	12.7	12.2	7.1
2	25.8	25.9	23.8	26.8	20.3	20.5	28.6
3	23.6	22.7	28.0	28.3	30.3	30.2	21.4
4	22.0	20.6	31.3	24.9	36.6	37.1	42.9
RUCA classification, %							
Urban	79.6	81.6	87.8	87.1	93.5	91.3	76.9
Suburban	8.6	8.2	7.5	7.7	5.4	6.5	11.4
Large rural	7.1	6.1	3.4	3.7	0.7	1.6	7.1
Small town/rural	4.7	4.0	1.3	1.5	0.3	0.6	4.6

Abbreviation: DxCG, Diagnosis-Cost-Group; RUCA, Rural-Urban Commuting Area

<sup>a</sup> Data for 2008 excluded due to very few telemedicine visits

<sup>b</sup> Higher DxCG score indicates higher health risk and higher predicted spending

<sup>c</sup> Quartiles derived from median household income for all enrolled members based on ZIP code from US census data

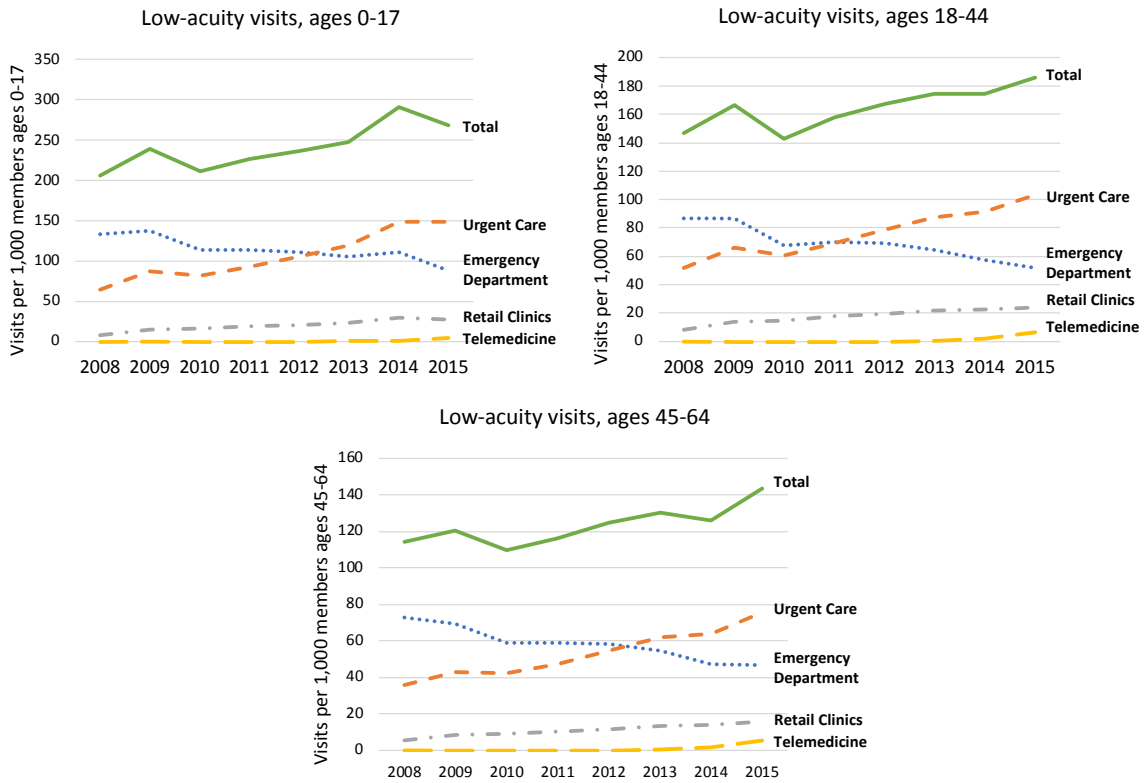
**eTable 3. Change in Visits per 1000 Members by Venue and by Category of Low-Acuity Condition from 2008 to 2015<sup>a</sup>**

Venue	Low-Acuity Condition Category <sup>b</sup>					
	Musculoskeletal	Respiratory	Ear & Dental	Urinary	Other Viral	Eye
Emergency Department	-23.6	-4.0	-2.3	0.1	-1.4	-0.6
Non-Emergency Department Venues	10.6	47.2	5.8	6.7	2.8	3.2
Urgent Care	10	32.5	3.8	4.9	2.0	2.2
Retail Clinic	0.4	10.4	1.7	1.1	0.6	0.7
Telemedicine	0.2	4.3	0.3	0.7	0.2	0.3
Total	-13.0	43.2	3.5	6.8	1.4	2.6

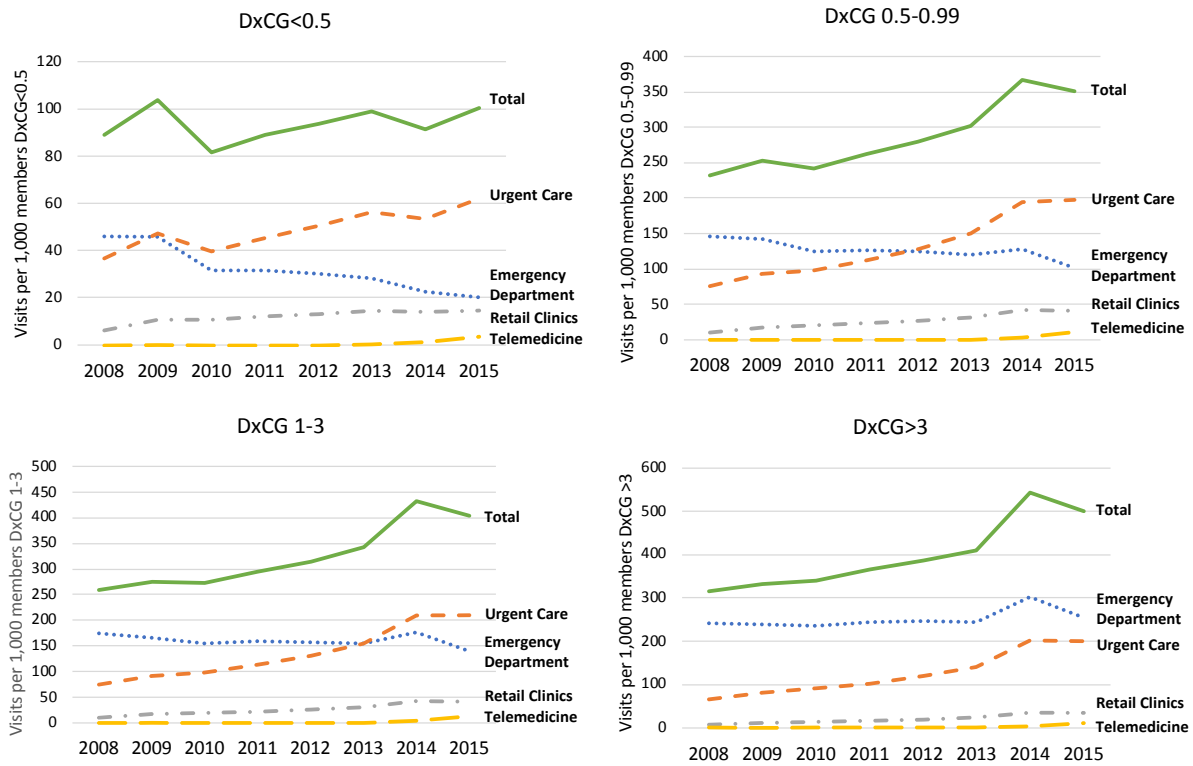
<sup>a</sup> Data are presented as change in visits/1,000 members

<sup>b</sup> Condition categories were Musculoskeletal (Cellulitis or abscess; Contusion; Dislocation/sprain; Fracture; joint and muscle pain, tendonitis, bursitis; Laceration), Respiratory Conditions (Allergic Rhinitis; Bronchitis; Pharyngitis; URI/Sinusitis), Ear & Dental Conditions (Otitis externa and impacted cerumen; Otitis media and eustachian tube diagnoses; Dental), Urinary Conditions (UTI; Other urinary problem), Other Viral Conditions (Influenza; Viral infection), Eye Conditions (Conjunctivitis; Other eye condition). Diagnosis codes used for categorization in **eAppendix B**.

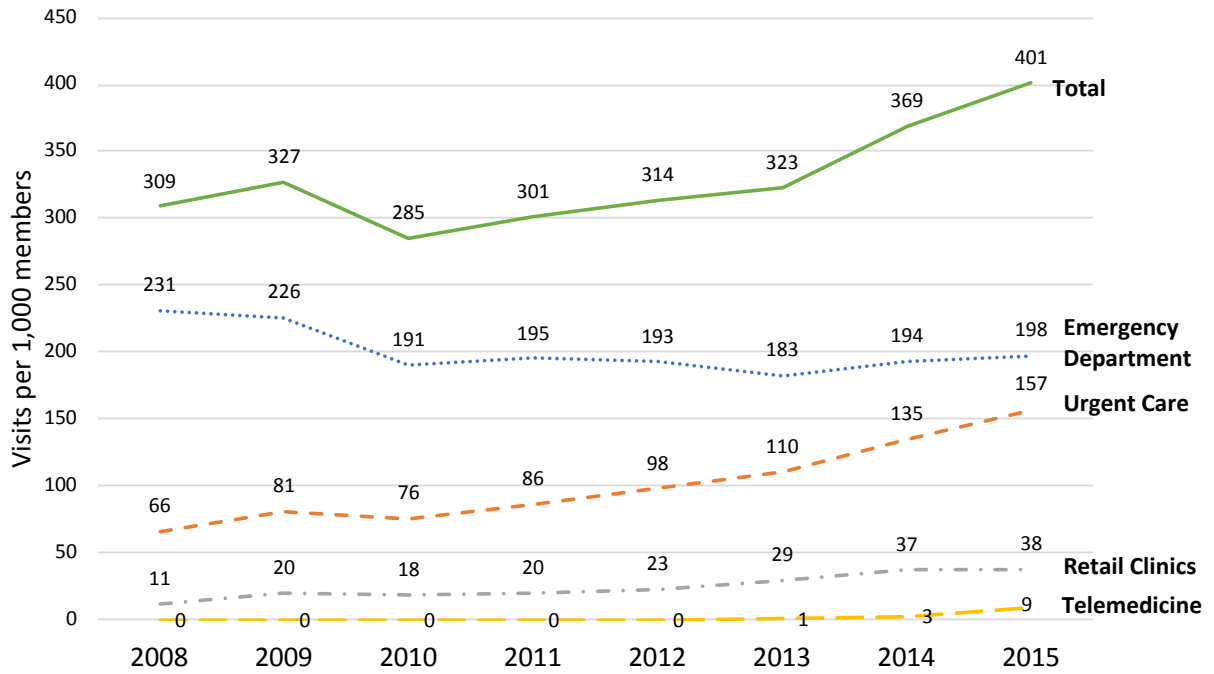
**eFigure 1. Visits to Acute Care Venues for Treatment of Low-Acuity Conditions by Age, 2008-2015**



**eFigure 2. Visits to Acute Care Venues for Treatment of Low-Acuity Conditions by Diagnostic Cost Group Score, 2008-2015**

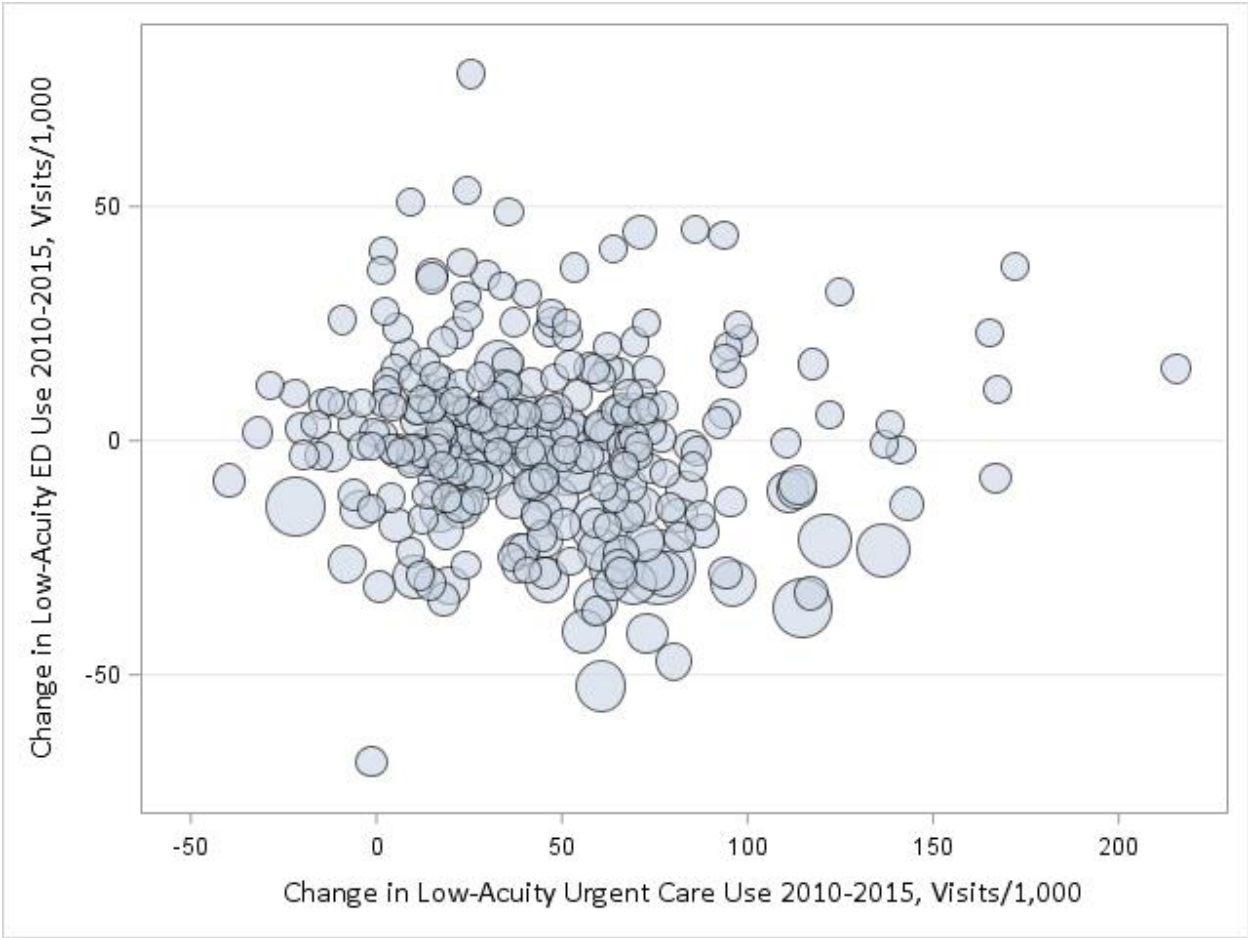


**eFigure 3. Visits to Acute Care Venues for All Conditions, 2008-2015**





**eFigure 4. Association Between Change in Utilization of Emergency Department (ED) vs Urgent Care Centers for Treatment of Low-Acuity Conditions by Hospital Referral Region, 2010-2015**



Plot depicts the association between the change in low-acuity Emergency Department (ED) and Urgent Care use by Hospital Referral Region from 2010 to 2015 measured in visits/1,000 members. Dots are larger for regions with greater number of enrollees.

## **eAppendix A. Tax Identification Numbers (TINs) and Organizational National Provider Identifiers (NPIs) for Urgent Care Centers, Retail Clinics, and Telemedicine**

### TINs for urgent care centers

421670203, 320435601, 075201482, 175251054, 752510547, 752510547, 320395105, 742891603, 752384663, 752678147, 042658593, 760546504, 004265859, 043289947, 056131470, 582420844, 158242084, 561204851, 582654983, 320017320, 200173201, 582660956, 562029468, 271968724, 450705207, 320385889, 320399445, 270587283, 320399103, 320428236, 320474495, 630825248, 593108656, 205428139, 203824377, 042955967, 204277891, 550783964, 113646442, 202545363, 263667220, 753056104, 742800963, 742901802, 860998039, 860727095, 742918584, 320379142, 320394421, 541353272, 043730316, 363502461, 363510158, 742231775, 320360878, 010790511, 911579410, 020652328, 043730316, 020652328, 061736435, 200074877, 201902391, 205805198, 205824138, 205997415, 260582791, 260845489, 263239475, 263315640, 263750502, 263858182, 264546400, 270081366, 270572241, 270642524, 271436108, 272208011, 272272976, 272743891, 272973102, 273190192, 273267300, 273742499, 273988055, 274009996, 274412271, 274450928, 274467435, 364615049, 421639127, 452392689, 453123110, 453461101, 453743709, 455388778, 455436856, 461529610, 462391968, 462403175, 462447509, 462500960, 462548275, 462918936, 464348120, 464793937, 470902244, 472608399, 541669672, 541677022, 541905741, 541973284, 570769093, 582380955, 593625966, 742231775, 752473418, 760606470, 820484708, 900795697, 900929572, 954643269, 270851352, 320437361, 113371244, 611675068, 141997293, 202013359, 205277615, 208590757, 223697854, 020592298, 043033510, 640907721, 742904891, 331067457, 200222773, 320355097, 270034858, 810644985, 202309785, 770438269, 010624774, 208870333, 320353535, 320390022, 943137311, 204681846, 850481404, 593433186, 650419077

### NPIs for urgent care centers

1275087694, 1457543324, 1447448923, 1376731851, 1750579439, 1770771255, 1396933974, 1831387315, 1871782490, 1780873307, 1033398201, 1588843734, 1629210307, 1922321314, 1477822476, 1336320738, 1184872764, 1659529238, 1881843225, 1750573622, 1457540452, 1902095961, 1538358510, 1811186851, 1235328287, 1922297985, 1568651578, 1023207065, 1811186869, 1982893988, 1659551695, 1396926523, 1588847073, 1033350665, 1932491685, 1851679419, 1932534609, 1194196345, 1831368489, 1235309204, 1285071241, 1316388002, 1952742645, 1215378906, 1235570920, 1053752741, 1780025478, 1316388614, 1013358472, 1568803922, 1295176642, 1891136180, 1386085660, 1992146286, 1790181410, 1265838981, 1437555133, 1609272301, 1144626847, 1699171397, 1962808667, 1245636943, 1417353111, 1154727857, 1295131324, 1013313147, 1922404052, 1073903712, 1851797989, 1114323243, 1811167596, 1164692844, 1174793855, 1760673768, 1497946495, 1396936191, 1659562262, 1124219597, 1497947576, 1407048408, 1366634347, 1184816191, 1215129234, 1477745495, 1578755393, 1104018787, 1326229725, 1669723474, 1417298100, 1316288004, 1104263086, 1245677954, 1609214196, 1831595933, 1457749749, 1093992281, 1528245719, 1528245727, 1992982185, 1932377298, 1821391707, 1376846253, 1831481589, 1255610457, 1497183636, 1245400225, 1326324039, 1740557362, 1992988190, 1194908392, 1982887188, 1417130618, 1770766974, 1306029517, 1104009315, 1760665962, 1023292943, 1083806822, 1093904872, 1821287525, 1164608790, 1851577498, 1780860320, 1427234004, 1295911451, 1548459464, 1760674790, 1366634172, 1336331925, 1124210711, 1205028883, 1780876375, 1316139918, 1386836963, 1992997571, 1104018795, 1356534242, 1982893681, 1053500751, 1629267349, 1619166337, 1477742179, 1730378431, 1346429388, 1427237049, 1730368366, 1851571608, 1184805574, 1811178213, 1902087307, 1275714677, 1992986392, 1710168117, 1578744702, 1518140045, 1790968923, 1578746707, 1982887139, 1922281724, 1558544353, 1568646487, 1740464668, 1235313156, 1780868554, 1780868547, 1003090879, 1801071196, 1376728667, 1477730356, 1174700058, 1427235308, 1861679722, 1689851552, 1205013182, 1962689836, 1225215429, 1962680454, 1902057086, 1811148992, 1770719296, 1164755708, 1831415983,

1780900407, 1386962587, 1790085355, 1306147111, 1952602765, 1689975492, 1518269620,  
1780986596, 1457655540, 1881991115, 1417254749, 1689964736, 1659661783, 1447543715,  
1477847093, 1568757250, 1750679262, 1710275268, 1043598600, 1922389253, 1669753992,  
1578848677, 1760769616, 1568739191, 1972872976, 1053680876, 1306116496, 1518238039,  
1982975504, 1578820403, 1376800201, 1457618381, 1700143641, 1013274943, 1477810307,  
1821355751, 1326308180, 1316293319, 1164778163, 1750637765, 1245586247, 1144576141,  
1922354935, 1891043048, 1669721999, 1336499482, 1225380405, 1568706455, 1962748137,  
1275879157, 1790022259, 1609113166, 1477892768, 1649519836, 1770822710, 1174865190,  
1487996054, 1174865695, 1205178563, 1548503436, 1285078311, 1487090197, 1386081867,  
1437597044, 1689012197, 1275973240, 1033559034, 1831527001, 1457789620, 1497185771,  
1033540117, 1396166229, 1033530993, 1104241256, 1669890695, 1194122499, 1003202706,  
1316325509, 1548613797, 1609320381, 1356897987, 1326222191, 1013194455, 1417131335,  
1720262645, 1972787737, 1508044587, 1619169489, 1386833291, 1790974608, 1730378605,  
1821278755, 1376723718, 1083914220, 1164707279, 1346439023, 1942492590, 1316136294,  
1770772667, 1528257425, 1871782771, 1720277593, 1295924173, 1194914085, 1710176482,  
1437348141, 1992994644, 1376732040, 1043409717, 1104015783, 1972792554, 1407045081,  
1700075439, 1255520995, 1114116852, 1508055278, 1295924967, 1386833010, 1922297639,  
1497944011, 1417136979, 1619156106, 1730360124, 1922289156, 1982887386, 1063695864,  
1962685768, 1174750533, 1053500629, 1891979712, 1871770784, 1275851073, 1548588346,  
1801114608, 1144566027, 1326237900, 1639352768, 1902089493, 1144495243, 1386885770,  
1306161666, 1467712232, 1174865984, 1033374764, 1356588339, 1558651687, 1710279583,  
1316101579, 1194974261, 1871757351, 1306965553, 1457470668, 1386763589, 1780703058,  
1518086792, 1174642326, 1346369626, 1760630867, 1942458047, 1013166057, 1205085206,  
1376734616, 1699939108, 1699930313, 1043448087, 1316988041, 1073522538, 1285837955,  
1295926525, 1912161175, 1811151079, 1770748618, 1689839508, 1326203241, 1023273935,  
1528223336, 1699930545, 1487819330, 1942465877, 1669637369, 1992960769, 1336304765,  
1740445196, 1528224631, 1437315546, 1033375753, 1972769685, 1588820211, 1922264639,  
1477719185, 1073779781, 1407012123, 1770749491, 1225294945, 1750547485, 1730345034,  
1326204629, 1437315728, 1255597555, 1184880478, 1992961288, 1710143003, 1629234919,  
1083870372, 1336305630, 1982860284, 1518123819, 1497903595, 1215185319, 1093963100,  
1356599468, 1366690471, 1801044912, 1851549760, 1841448750, 1013165927, 1922256833,  
1831347749, 1740438654, 1033367941, 1396993200, 1932357845, 1750539664, 1669620571,  
1659529568, 1629226493, 1033368477, 1134378177, 1346499415, 1073762142, 1790934867,  
1154570232, 1225287303, 1861641946, 1023267101, 1548419583, 1548419591, 1366691313,  
1447409495, 1356590301, 1265681217, 1366691347, 1518116599, 1326297490, 1114176195,  
1003065038, 1912156944, 1821247859, 1043469083, 1952550998, 1831348861, 1740439777,  
1659520682, 1386893311, 1154570190, 1063661007, 1972752913, 1104075142, 1922257963,  
1588813521, 1306095344, 1215186259, 1851540892, 1396994331, 1205085248, 1114176153,  
1669621603, 1487803425, 1629227673, 1528217601, 1194974139, 1912156951, 1821247867,  
1730338773, 1649429689, 1275782229, 1710136759, 1902055072, 1801045976, 1710136882,  
1962651034, 1962651950, 1871742866, 1942459979, 1083863021, 1891944831, 1700035748,  
1619126653, 1528217569, 1144479189, 1053560094, 1306095476, 1215186382, 1982853925,  
1427207463, 1881843829, 1295984235, 1457500498, 1306095484, 1215186390, 1679722755,  
1861641938, 1679722748, 1275782203, 1366691438, 1982853057, 1609025774, 1154570224,  
1972752046, 1881843951, 1225287261, 1326297300, 1376792309, 1285883215, 1093964025,  
1902055932, 1548419575, 1184873119, 1992954929, 1801045836, 1447409479, 1174772107,  
1083863013, 1992954937, 1801045844, 1457500407, 1073762159, 1609025782, 1245489327,  
1114176294, 1447409511, 1356590426, 1083863153, 1760631709, 1376792317, 1720237761,  
1194974113, 1295984227, 1104075134, 1013166040, 1861641805, 1083863963, 1215187828,  
1598915779, 1144470329, 1043460223, 1336390640, 1427200948, 1508018029, 1235381773,  
1902058449, 1457503997, 1366694804, 1265684708, 1437301975, 1518119056, 1972755411,  
1215189758, 1528210069, 1427200963, 1154573699, 1477705911, 1679725113, 1447402987,  
1356593891, 1619129152, 1265684781, 1982856407, 1902058431, 1144472689, 1407008949,  
1316199854, 1225280761, 1124270665, 1033361571, 1841442381, 1750533295, 1104078641,  
1568614006, 1912159450, 1821240367, 1245482728, 1861644346, 1124270608, 1942452420,  
1942452354, 1013169424, 1316199722, 1942452412, 1851543326, 1487806956, 1194977678,

1639321110, 1790937274, 1033361514, 1760634240, 1396997870, 1285886754, 1396997706,  
1043462518, 1821240391, 1649422114, 1417109992, 1780836262, 1598917072, 1407008980,  
1427200849, 1164674636, 1982856456, 1598917064, 1952553422, 1497907968, 1306098876,  
1649422122, 1366694846, 1275785750, 1992957476, 1770735250, 1114179694, 1669624144,  
1578715058, 1497907802, 1902058316, 1427200856, 1932351343, 1720230139, 1629220033,  
1225280647, 1235381708, 1578715041, 1295987766, 1902058480, 1356593834, 1174775654,  
1083866560, 1891947370, 1871745299, 1700038270, 1346492816, 1083866404, 1205088788,  
1487806964, 1912159336, 1497907794, 1033361332, 1306098603, 1871748574, 1083850366,  
1174769459, 1144466202, 1578700258, 1306085550, 1316189145, 1407098247, 1861634602,  
1639311301, 1366684730, 1073778825, 1871758599, 1881766202, 1215063292, 1629264288,  
1437345089, 1992750731, 1710176524, 1700215050, 1609079375, 1255597977, 1891951513,  
1669638300, 1487810115, 1396901690, 1881919777, 1326365388, 1407167729, 1053623355,  
1083628333, 1770655649, 1598856338, 1588755326, 1023098845, 1619361961, 1407836208,  
1649514258, 1316927338, 1225583057, 1295105344, 1003286154, 1730559899, 1992175053,  
1093186421, 1073986717, 1033664396, 1184179301, 1902351133, 1770038911, 1083169221,  
1992250971, 1043765027, 1164977963, 1336694140, 1770038580, 1982159729, 1447705298,  
1083169833, 1790230548, 1063967818, 1659826402, 1184179863, 1528513207, 1245785922,  
1639624299, 1467907931, 1043766520, 1205382785, 1386190866, 1265988745, 1619423100,  
1669928156, 1366998791, 1649726084, 1790231157, 1770039133, 1932655396, 1477009835,  
1821544289, 1902352362, 1467908392, 1083160923, 1417403353, 1457807307, 1073069928,  
1700211232, 1104127034, 1902215189, 1073868600, 1245514355, 1003152984, 1558753574,  
1043607294, 1497159560, 1417079229, 1992923262, 1124379409, 1841525235, 1568696227,  
1902124647, 1477972263, 1144528514, 1316245780, 1326336702, 1447558002, 1669701306,  
1164882031, 1215379789, 1114293917, 1952715419, 1962895649, 1316272685, 1407106982,  
1639575590, 1871865709, 1720458383, 1740672989, 1225381148, 1316249394, 1417263997,  
1477845279, 1407162076, 1235443854, 1861705857, 1518229426, 1740590157, 1417293465,  
1104107614, 1326356031, 1518274927, 1063714236, 1992022370, 1902168461, 1780934125,  
1770983199, 1376853663, 1184928368, 1790071355, 1740626621, 1871889543, 1811210735,  
1770857278, 1164797957, 1770869315, 1629466917, 1902188196, 1417205105, 1598195968,  
1831435924, 1366850059, 1437546363, 1336495498, 1639448251, 1760745558, 1609127422,  
1942602172, 1992078000, 1386952034, 1316225147, 1558788620, 1396058137, 1386925360,  
1942519335, 1851784896, 1831416346, 1316369895, 1760750541, 1659626414, 1386941912,  
1144598293, 1902128507, 1124306923, 1174804918, 1710283650, 1275776148, 1770885808,  
1336491075, 1922383959, 1205268208, 1457754301, 1790166106, 1104285824, 1518326248,  
1649647249, 1720008311, 1669429080, 1992724124, 1598771990, 1407862808, 1316953714,  
1275549685, 1184630592, 1992711303, 1083620496, 1578579983, 1487660890, 1669488060,  
1578579975, 1699781005, 1831207604, 1336242908, 1497858948, 1538262985, 1912006735,  
1629470356, 1891701207, 1912246406, 1629436431, 1043526528, 1245575950, 1346608825,  
1720459134, 1861645798, 1255578712, 1548408693, 1720311392, 1295069037, 1982910089,  
1013224443, 1841508785, 1891088779, 1073891792, 1326315193, 1629346960, 1730443524,  
1316376296, 1912318361, 1295147106, 1780096750, 1982016820, 1780096628, 1568874543,  
1730587338, 1346605839, 1528404613, 1508292657, 1043667660, 1598132490, 1063881092,  
1427416908, 1871941815, 1316398118, 1801845011, 1417906611, 1023067220, 1225087430,  
1821047952, 1780633834, 1215986344, 1679522163, 1902058498, 1275848426, 1487696969,  
1811047285, 1275787434, 1336386937, 1982841581, 1265670715, 1861718306, 1831554211,  
1275088676, 1356743025, 1548682578, 1669830881, 1760804793, 1013375237, 1306117205,  
1023455052, 1821439761, 1669805016, 1043643489, 1609209048, 1497188841, 1184057523,  
1326472986, 1013341676, 1104251958, 1548698012, 1528476751, 1659767770, 1891155982,  
1467801852, 1205183894, 1568710580, 1205171501, 1992148746, 1639507197, 1376964056,  
1578984357, 1104247881, 1750781654, 1396133393, 1750779658, 1790174878, 1184010100,  
1154718567, 1659769529, 1306216932, 1407227739, 1154784882, 1922488014, 1235508516,  
1083161640, 1033574256, 1326408428, 1245693977, 1427405968, 1326433277, 1639565559,  
1710340443, 1790132231, 1417400235, 1457808016, 1205849379, 1003971417, 1730373879,  
1588025332, 1942662051, 1366544728, 1073889630, 1245506807, 1366718926, 1083970867,  
1609069970, 1750440475, 1174716443, 1477716108, 1609114578, 1831430404, 1164763744,  
1003157322, 1932542925, 1215372586, 1770875494, 1407123615, 1376884957, 1235138280,

1306201215, 1538395959, 1912133315, 1326351461, 1760786131, 1053602870, 1962772111,  
1033489281, 1740550995, 1649540899, 1457622839, 1700159027, 1033550975, 1811338742,  
1659784056, 1649668047, 1962885582, 1902281686, 1780016774, 1629434253, 1891052668,  
1912160920, 1629379607, 1801173653, 1639436256, 1003164211, 1891030334, 1902147564,  
1689954109, 1316227838, 1235227422, 1073798153, 1548290240, 1053514968, 1609875277,  
1487058830, 1710328653, 1427490432, 1326476003, 1164707980, 1073857363, 1740648492,  
1891142337, 1528415064, 1922459734, 1366820094, 1376941591, 1437536083, 1134506488,  
1184095515, 1285093393, 1548611007, 1013389485, 1649694407, 1598185373, 1689082257,  
1336548734, 1790161396, 1669839494, 1164879607, 1336592856, 1104279629, 1457704975,  
1801040092, 1164421517, 1811141005, 1902056476, 1033517248, 1255719472, 1710371448,  
1982839031, 1841426244, 1386977973, 1417281098, 1417279670, 1609192012, 1891011979,  
1245556398, 1013223171, 1710295639, 1235447202, 1700188349, 1548562184, 1700188257,  
1487950986, 1245536416, 1780980953, 1295025179, 1467744375, 1225325178, 1801175492,  
1063791663, 1396025813, 1558642991, 1932480852, 1063793685, 1639441868, 1386916518,  
1134492788, 1518230168, 1497028054, 1467725010, 1043583602, 1073886636, 1356614895,  
1326311861, 1528331071, 1689948077, 1346514734, 1942574348, 1023375797, 1730447046,  
1770830580, 1750638565, 1720336829, 1063761310, 1164766440, 1306187976, 1083017404,  
1629466628, 1699163576, 1801243340, 1518252964, 1689931446, 1124280912, 1215219878,  
1821372624, 1720356405, 1992076889, 1437420320, 1861763757, 1497020747, 1790042562,  
1568729325, 1841557519, 1790049625, 1417211343, 1902153711, 1699019984, 1386989689,  
1710338520, 1417402801, 1124573514, 1215363429, 1518256080, 1225327547, 1124318043,  
1346411600, 1740448430, 1972585099, 1437323722, 1255692182, 1194080218, 1649529058,  
1265770135, 1992060016, 1184812000, 1053375659, 1134185671, 1265496863, 1881650471,  
1144251976, 1770549214, 1861458309, 1043276587, 1629034210, 1932383007, 1144279670,  
1124050539, 1932133139, 1366476566, 1265466460, 1619901824, 1790719904, 1144254376,  
1952335184, 1295757789, 1902062441, 1043371826, 1972822450, 1700105244, 1609195148,  
1770802068, 1689993974, 1215256508, 1306165691, 1972822013, 1144549288, 1003135062,  
1457670481, 1396065322, 1205156239, 1295055226, 1891014825, 1427378397, 1144540014,  
1780904656, 1891015764, 1255651121, 1790005668, 1245550110, 1679893309, 1740322858,  
1669858924, 1245694082, 1619300118, 1326000597, 1114983608, 1043253883, 1952367492,  
1508808320, 1154472967, 1922289412, 1487838652, 1972757474, 1396984514, 1093104838,  
1760702997, 1942691100, 1073661690, 1336491968, 1225331903, 1154624831, 1821391491,  
1346545209, 1750708392, 1962786269, 1770867087, 1366716557, 1649530197, 1962580118,  
1972762839, 1235398199, 1194052514, 1477877868, 1649554940, 1104196302, 1235409012,  
1619249109, 1851663934, 1043582117, 1477818730, 1710239082, 1558607960, 1255677415,  
1356687081, 1609115997, 1063859825, 1750728523, 1316384175, 1891132650, 1376981092,  
1538595871, 1972929081, 1710303813, 1275959389, 1669899209, 1841617487, 1932526571,  
1679990212, 1740526144, 1336554153, 1114329471, 1376947754, 1417321381, 1003280033,  
1083989883, 1760727945, 1073858122, 1972848950, 1710222708, 1235474214, 1821333816,  
1063757045, 1053656025, 1174868152, 1083959068, 1114263019, 1407193816, 1336486646,  
1689911091, 1578800884, 1790022051, 1437496791, 1194062406, 1982941126, 1851638001,  
1528305349, 1750628400, 1376880096, 1386982205, 1104164029, 1477891398, 1588902498,  
1487992301, 1295073112, 1205174141, 1205177573, 1235571241, 1861825861, 1316371115,  
1659707735, 1194152744, 1639507494, 1790115384, 1184093031, 1164891016, 1669841516,  
1659740504, 1013386978, 1386013241, 1942679519, 1922478205, 1033589072, 1740650456,  
1659741361, 1295107514, 1578937504, 1952775108, 1154695344, 1407114176, 1710245485,  
1598028987, 1861755266, 1801143847, 1962747162, 1982949947, 1063729226, 1861765638,  
1790979136, 1942360961, 1831415868, 1114075124, 1023166030, 1750439766, 1669520672,  
1578611588, 1487702494, 1295883205, 1104974112, 1013065028, 1922156934, 1831247840,  
1740338755, 1942358957, 1932257946, 1841348851, 1184772824, 1144378704, 1053469619,  
1093850232, 1558493288, 1750769220, 1932345238, 1659659555, 1922381748, 1689937732,  
1639532393, 1972939163, 1952732851, 1003203613, 1023487873, 1609227230, 1306940580,  
1154425338, 1811091077, 1720182983, 1548364193, 1902080005, 1780849406, 1205087517,  
1952552267, 1679724983, 1093034811, 1215229901, 1366735516, 1366704546, 1265866503,  
1205265055, 1861884298, 1528435492, 1285093773, 1881049393, 1962423632, 1922251701,  
1245484377, 1336538701, 1982733564, 1609280999, 1013390426, 1548643950, 1679940779,

1043689458, 1134598709, 1174994701, 1679712517, 1720440464, 1528206612, 1386033264,  
1851544035, 1356633523, 1699055954, 1528325966, 1386999142, 1053665067, 1881934644,  
1902246853, 1407277890, 1487075826, 1033531264, 1093137044, 1932511870, 1770984270,  
1508210451, 1891240099, 1194039560, 1881997435, 1306142021, 1659677383, 1578837233,  
1457613374, 1568712677, 1023354420, 1104167238, 1770904609, 1225459159, 1689084204,  
1285034470, 1124488192, 1346690864, 1851690903, 1386748937, 1861791766, 1487945846,  
1588935969, 1386988632, 1902147374, 1649511791, 1225469646, 1558776682, 1023482510,  
1134583008, 1689603748, 1649389693, 1548364771, 1033213103, 1881798049, 1902900558,  
1811091465, 1720182371, 1639273287, 1659475200, 1568566115, 1477657021, 1922102573,  
1831293489, 1740384395, 1124279435, 1437476363, 1972822344, 1073827440, 1558661926,  
1104194398, 1730423856, 1568891315, 1871908145, 1255703419, 1588018881, 1003945676,  
1558773358, 1447499512, 1316268758, 1730535261, 1336384494, 1194040766, 1295051308,  
1366768475, 1548560782, 1407908403, 1053654947, 1720320997, 1528301223, 1326481557,  
1407299639, 1871836148, 1417390642, 1346582517, 1437491602, 1699018051, 1699118828,  
1508209735, 1568703783, 1770829053, 1407195795, 1083043566, 1407893100, 1518913409,  
1851344378, 1831423482, 1609822592, 1528362381, 1447448733, 1881097772, 1770919797,  
1558414631, 1043409147, 1477690154, 1255670089, 1134232184, 1730434283, 1770822751,  
1205175213, 1083953079, 1073852067, 1336488329, 1952640963, 1356680334, 1699014696,  
1407195407, 1053650069, 1033458047, 1013256023, 1689913675, 1194064196, 1598004509,  
1588903595, 1295074276, 1568701563, 1811236896, 1003155037, 1205175171, 1922347897,  
1326387218, 1265771125, 1952640807, 1013256973, 1467791327, 1184963035, 1851630719,  
1801135785, 1528307550, 1821337775, 1184963118, 1780923672, 1417296393, 1427397306,  
1649519513, 1720327687, 1124367016, 1578802526, 1437498318, 1336488360, 1154660009,  
1790024685, 1972842862, 1689913576, 1780923631, 1689913436, 1346589173, 1437498268,  
1033581384, 1639542202, 1205292885, 1568560571, 1366499048, 1619984630, 1083621007,  
1700893724, 1154508265, 1528307576, 1295184208, 1023392800, 1700803632, 1144504663,  
1104943844, 1952572430, 1821002510, 1831585108, 1295947323, 1952796112, 1528046323,  
1538499140, 1205814118, 1649665902, 1114141090, 1063808301, 1699160952, 1407193725,  
1831144351, 1376908178, 1649635442, 1003271800, 1831554633, 1922463728, 1689039471,  
1417312208, 1487019287, 1669837464, 1578928370, 1851756654, 1114382918, 1285099085,  
1053784660, 1578937868, 1053608547, 1770713117, 1104988435, 1881930493, 1609802719,  
1174913842, 1508151523, 1033195474, 1265790588, 1740575760, 1285929208, 1144515172,  
1790070720, 1306105663, 1417390519, 1538501291, 1033549514, 1962832543, 1922438415,  
1871923359, 1124458617, 1154747996, 1467869388, 1760890404, 1487029468, 1821463803,  
1285009266, 1013250471, 1326480062, 1750713905, 1396175881, 1912385162, 1356734032,  
1346547676, 1568858686, 1639547375, 1417325986, 1316303340, 1528518776, 1992256622,  
1215488952, 1699226043, 1265983308, 1710262266, 1801277629, 1124199252, 1073673034,  
1629226592, 1609195254, 1730491945, 1790080430, 1982903506, 1205111846, 1609148733,  
1932468089, 1790048569, 1922344712, 1730425414, 1720327372, 1487993564, 1306284757,  
1356789572, 1295175503, 1588005284, 1013342104, 1972924835, 1992126247, 1093131252,  
1871919811, 1790101731, 1366869679, 1386055648, 1801207998, 1255742342, 1538570627,  
1942611520, 1548671126, 1477966083, 1760899678, 1518374438, 1487061206, 1033512611,  
1881088292, 1831586437, 1609263219, 1861870206, 1699150789, 1811364201, 1548637937,  
1437522331, 1588020598, 1861858896, 1962868372, 1235686437, 1285182873, 1922556513,  
1043761786, 1740733229, 1053775288, 1548718141, 1376984633, 1851633390, 1487997144,  
1427472265, 1518380914, 1053666206, 1396090528, 1205979952, 1073935003, 1447695713,  
1164840609, 1932521267, 1932590676, 1073995700, 1205219441, 1801261433, 1871980888,  
1225425234, 1437527975, 1013468461, 1760722334, 1528406352, 1366882276, 1174964464,  
1922434000, 1558790527, 1447676549, 1306257993, 1013321272, 1265848956, 1245632249,  
1093111742, 1457741704, 1366828576, 1649643693, 1720451776, 1902270770, 1588115935,  
1649612680, 1174955520, 1689002982, 1710303136, 1639581689, 1538565320, 1396137568,  
1497001200, 1780926220, 1144665126, 1962848499, 1821428103, 1477977593, 1114342219,  
1093158990, 1447660816, 1982098406, 1194119412, 1447644521, 1073938817, 1457802019,  
1003172628, 1457716706, 1053628867, 1134452865, 1154791812, 1518315902, 1396065686,  
1942318308, 1992987549, 1710244587, 1780931501, 1679936835, 1043685704, 1528432036,  
1669827424, 1780130013, 1821548496, 1073063657, 1730630195, 1215302971, 1811286354,

1780958470, 1225303100, 1356608244, 1134486020, 1659630010, 1205195666, 1750640629, 1508113416, 1558606079, 1467797993, 1154667301, 1518203769, 1861730590, 1922410356, 1376941849, 1861881831, 1962893313, 1255722120, 1497146310, 1770975435, 1730571449, 1558753269, 1760876296, 1952796120, 1215316880, 1831567213, 1114391653, 1689034993, 1679934467, 1992251607, 1104373232, 1053597476, 1285975797, 1245694082, 1043237894, 1144478033, 1366644361, 1720460595, 1922415173, 1518394287, 1255767760, 1679900344, 1992041370, 1164827663, 1306241617, 1114389707, 1841652336, 1073963146, 1457478703, 1164646774, 1629252549, 1093042012, 1659677615, 1740586700, 1659656015, 1972850105, 1093130924, 1770987752, 1568844678, 1194195008, 1902262587, 1295286979, 1144470022, 1720426620, 1700239373, 1598118168, 1689647372, 1114957123, 1790030385, 1669714606, 1619278363, 1700251253, 1629474150, 1457536161, 1831204759, 1932564184, 1316059405, 1316371263, 1396043923, 1942546890, 1285975797, 1477927754, 1356472914, 1376665505, 1972940666, 1821040890, 1295976876, 1487835484, 1730212390, 1992024665, 1356779250, 1528409026, 1861823197, 1861700353, 1033308697, 1033550546, 1639430515, 1073645180, 1306238647, 1790914042, 1902143886, 1629439427, 1427214303, 1508071374, 1740543214, 1336486083, 1487995205, 1083955892, 1396180006, 1518302223, 1043648876, 1740606425, 1568875169, 1841695566, 1831580828, 1689065625, 1891188546, 1982072260, 1336517614, 1740647221, 1699121962, 1376891416, 1629461116, 1336257179, 1164772844, 1962752642, 1508116286, 1518217298, 1881944569, 1912250234, 1982947677, 1992142152, 1134559396, 1619398187, 1083072649, 1962817601, 1588775621, 1205150240, 1295059236, 1053772152, 1235411547, 1235434036, 1881978021, 1720228067, 1710132816, 1851679252, 1952652281, 1255742243, 1063652220, 1952744468, 1306243571, 1184067936, 1013965797, 1356574131, 1780098020, 1225443641, 1669888186, 1972919488, 1982010534, 1225433857, 1194120691, 1558766865, 1891190039, 1376940866, 1326582529, 1851722417, 1407974579, 1396175170, 1316168321, 1568465466, 1982060935, 1598023830, 1528330180, 1023455672, 1528473899, 1629477021, 1497150585, 1992102909, 1457721177, 1972974756, 1841648649, 1265730170, 1720445067, 1831635226, 1962770016, 1669725933, 1629515952, 1164969499, 1770850224, 1760735021, 1205259611, 1093120057, 1548706997, 1073978193, 1396706693, 1407182587, 1811269517, 1033400320, 1780962647, 1619265352, 1871871731, 1891074985, 1255633459, 1972880813, 1104207612, 1609187905, 1982910055, 1427431055, 1164805545, 1891065520, 1689004095, 1902165467, 1043561020, 1457655474, 1306244348, 1538398326, 1154492700, 1629459474, 1366855017, 1639315666, 1588730360, 1992746879, 1306993696, 1285735605, 1730405820, 1972809275, 1366710170, 1740606276, 1609231737, 1942553821

TINs for retail clinics:

200580790, 203437352, 205996177, 364778738, 743019386, 203207688, 203348922, 203497312, 203497352, 203516039, 203516074, 203516114, 203555819, 203920184, 204231613, 204231679, 204269269, 204767711, 204768243, 204868967, 205096637, 205737038, 205737113, 205793559, 205818281, 208273162, 208550517, 208550806, 208550988, 208621296, 208672011, 260414169, 260844287, 260844323, 260892202, 261999831, 271306048, 300443813, 320417652, 352321781, 352465302, 352481214, 352484295, 364768982, 365768982, 371551105, 383893929, 383920362, 410215170, 411952112, 421731802, 453190926, 461499950, 462568224, 464644485, 464868413, 471622394, 471629750, 471808980, 473860141, 474302355, 611726627, 743019386, 743248448, 753006007, 900368980, 943435100, 411939629, 141193962, 203516155, 311186877, 320201197, 208525446, 320439205, 260892627, 320301560, 204343252, 233057155, 753172698, 203189187, 208578655, 320273811, 202738116, 208558546, 202209671, 120220967, 204236094, 260706444, 264053069, 320390705, 320387353, 176063966, 760639661, 120862119, 650624238, 810637771

NPIs for retail clinics:

1215066568, 1871652362, 1114333952, 1700013976, 1114167228, 1891110946, 1215112792, 1487728978, 1346293941, 1073566725, 1407033111, 1073566725, 1639573009, 1518193598, 1043446974, 1316127616, 1053589259, 1497198279, 1063693703, 1548526189, 1033424650, 1063693703, 1548526189, 1497198279, 1861757577, 1316374275, 1134417975, 1316102734, 1922541036, 1821365016, 1982954285, 1285979179, 1497194484, 1457792418, 1760810972,

1568855708, 1013958966, 1063644466, 1548202252, 1154548261, 1619303849, 1033309372,  
1104013879, 1568659233, 1164802021, 1629245311, 1073780730, 1306965611, 1720329923,  
1356485809, 1629005558, 1578891057, 1285975482, 1740661461, 1457470858, 1902848617,  
1407227945, 1124449533, 1477894673, 1053353615, 1740601012, 1699748608, 1699747303,  
1285765727, 1881738037, 1649511841, 1457323164, 1568751956, 1609076330, 1568856722,  
1417076829, 1346488798, 1346212065, 1346664216, 1194797894, 1447420815, 1932171634,  
1134191836, 1730266537, 1306231147, 1285882613, 1912103706, 1407177272, 1992993570,  
1023383981, 1003081068, 1184908436, 1043409964, 1730192022, 1770742926, 1467421685,  
1699963611, 1427233808, 1033379870, 1285601443, 1225006224, 1952379950, 1871561860,  
1770551772, 1902237035, 1235390568, 1457549677, 1467891572, 1922050384, 1992010201,  
1689865818, 1326039827, 1902095615, 1164628582, 1730241258, 1326261918, 1043597495,  
1740637321, 1336585314, 1316916539, 1558791384, 1821483132, 1740699271, 1225440076,  
1023425972, 1336556059, 1023448644, 1447648506, 1407282809, 1962770172, 1568878122,  
1487050589, 1093183113, 1023448644, 1386767036, 1194932087, 1528276342, 1962833368,  
1205291549, 1619926854, 1275782633, 1649420316, 1366670390, 1528376746, 1083922199,  
1417265521, 1962782938, 1558643916, 1477835858, 1669725941, 1881096584, 1700954211,  
1063530632, 1770780777, 1912104910, 1841508967, 1558679662, 1235594821, 1154723427,  
1407258775, 1942603477, 1841438348, 1043388705, 1700954302, 1033287651, 1639247158,  
1750459418, 1619045135, 1891863254, 1861560286, 1922176502, 1346318961, 1326116922,  
1144398603, 1831267293, 1245308600, 1710055173, 1124196670, 1669540126, 1225106685,  
1023186491, 1528107141, 1548309164, 1841339454, 1609915214, 1730228347, 1114067519,  
1700903317, 1194843748, 1235257833, 1497873723, 1801914130, 1538287875, 1780702035,  
1679691927, 1922125533, 1528185147, 1700904331, 1225156870, 1669590907, 1285752527,  
1609994953, 1194843714, 1932227030, 1588782601, 1417075565, 1023487535, 1639572761,  
1730582867, 1972906022, 1942603089, 1659774644, 1245633221, 1326441460, 1972906014,  
1346643392, 1962805762, 1841677465, 1356728984, 1528447539, 1053789768, 1942650395,  
1750731873, 1649672874, 1285036418, 1346642519, 1144622317, 1528460201, 1972905677,  
1982006680, 1467854190, 1770985400, 1811399546, 1720480452, 1316349046, 1003218736,  
1952791311, 1386021087, 1407233125, 1427435171, 1689051336, 1295112829, 1568849198,  
1063891075, 1326417825, 1215387311, 1487004503, 1790140903, 1730557430, 1336517044,  
1417325945, 1013372697, 1033512587, 1861895104, 1114320496, 1225431554, 1659774982,  
1750784088, 1235532482, 1316340565, 1770986929, 1831592062, 1588060974, 1588041107,  
1528445160, 1164809703, 1073990610, 1013066950, 1487826111, 1710150412, 1568635258,  
1639342322, 1720251457, 1275706970, 1477725182, 1356514038, 1053584748, 1497928188,  
1588837272, 1902079601, 1265605968, 1700059409, 1528231131, 1033382205, 1467629253,  
1780851568, 1285801068, 1669649448, 1447427232, 1639346109, 1801063375, 1871760447,  
1104093673, 1336316801, 1619144185, 1215104757, 1821265240, 1083881429, 1245407683,  
1033386453, 1598932923, 1902073349, 1043487481, 1588831929, 1790952075, 1518134808,  
1386811586, 1063689206, 1427225705, 1972770253, 1215132782, 1891003919, 1144538265,  
1952619074, 1346537198, 1164602090, 1972525012, 1386881944, 1225368350, 1336342963,  
1154769552, 1720384217, 1316253255, 1033426069, 1982802773, 1255603684, 1053789859,  
1629323266, 1114322310, 1144625344, 1689079881, 1205229978, 1548664667, 1477889079,  
1326311499, 1609820729, 1558588145, 1154724540, 1871989087, 1679955504, 1114477379,  
1801261359, 1295289015, 1578010583, 1629480298, 1205241759, 1114332665, 1922415165,  
1235546482, 1306253521, 1285041434, 1447667696, 1174930150, 1184031163, 1104227982,  
1265851018, 1801208426, 1275945891, 1508272444, 1326455577, 1841607082, 1619384690,  
1902274434, 1104994870, 1164590824, 1174641930, 1396813077, 1437347143, 1619095296,  
1659499788, 1700073723, 1780871145, 1861560377, 1912025529, 1881729481, 1972860781,  
1487848800, 1801185913, 1528161049, 1639272339, 1730120635, 1790942936, 1831292531,  
1205885035, 1104848860, 1164445466, 1336325752, 1427242569, 1457374753, 1700165594,  
1841212453, 1891717682, 1073530234, 1083631253, 1104843382, 1124047139, 1255755393,  
1285653295, 1295752343, 1316965155, 1417974676, 1417975251, 1497773261, 1528085792,  
1548287600, 1548287725, 1558388728, 1568485639, 1578580759, 1639196801, 1669499893,  
1720001993, 1720006521, 1740209758, 1750308870, 1750446860, 1760799712, 1811914971,  
1831116961, 1851318000, 1851715569, 1871510024, 1902823180, 1912924010, 1912924150,  
1932126117, 1992722169, 1558539650



TINs for telemedicine:

272790442, 320381801, 205009396, 461326978, 201394099, 465488266, 272245888, 461674195, 320356234

NPIs for telemedicine:

1114353927, 1770859266, 1245403567, 1629352182, 1568731503, 1033475090, 1942545694, 1033454780, 1528402492, 1699146456, 1730537028, 1184072472, 1992153274, 1649628934, 1538517800, 1356799621, 1275981565, 1194173484, 1306294509, 1285082560, 1720436009, 1730537093, 1760830814, 1215385299, 1851749832, 1154773125, 1073946224, 1437568656, 1457787160, 1992131601, 1851709273, 1477881506, 1043641905, 1588095442, 1114358066, 1568893428, 1053742916, 1518398460, 1902209497, 1871966531, 1992178115, 1295108777, 1063885549, 1598138554, 1689049777, 1861867954, 1942675038, 1184045999, 1346658614, 1851709133, 1174931448, 1689082950, 1609284975, 1972919512, 1669792990, 1093184244, 1811378987, 1518330539, 1235548546, 1306209366

**eAppendix B. ICD-9 and ICD-10 Codes for Conditions Treated in Urgent Care Centers and Retail Clinics**

Condition <sup>a</sup>	ICD-9 code	ICD-10 code 1	ICD-10 code 2	ICD-10 code 3	ICD-10 code 4	ICD-10 code 5	ICD-10 code 6
Allergic rhinitis	4770	J301					
	4771	J305					
	4772	J3081					
	4778	J302	J3089				
	4779	J300	J309				
Bronchitis	4660	J209					
	4661						
	46611	J210					
	46619	J218					
	490	J40					
Conjunctivitis	770	A740					
	771	B300					
	772	B302					
	773	B301					
	774	B303					
	778	B308					
	779						
	7798						
	7799	B309					
	1301	B5809					
	37040	H16209					
	37044	H16299					
	37200	H1033					
	37201	H10239					
	37202	H10019					
	37203	H10029					
	37204	H10229					
	37205	H1013					
	37206	H10219					
	37210	H10409					
	37211	H10429					
	37212	H10439					
	37213	H1044					
	37214	H1045					

	37215						
	37220	H10509					
	37221	H10529					
	37222	H10539					
	37230	H109					
	37231						
	37233						
	37234	H10819					
	37239	H1089					
Other eye condition	37240	H11009					
	37241	H11049					
	37242	H11059					
	37243	H11029					
	37244	H11039					
	37245	H11069					
	37250	H1110					
	37251	H11159					
	37252	H11819					
	37253	H11149					
	37254	H11129					
	37255	H11139					
	37256	H11119					
	37261	H11229					
	37262	H11219					
	37263	H11239					
	37264	H11249					
	37271	H11439					
	37272	H1133					
	37273	H11429					
	37274	H11419					
	37275	H11449					
	3728						
	37281	H11829					
	37289	H1189					
	3729	H119					
	37300	H01009					
	37301	H01019					
	37302	H01029					
	37311	H00019					
	37312	H00029					

	37313	H00039					
	3732	H0019					
	37331	H01139					
	37332	H01119					
	37333	H01149					
	37334	H01129					
	3734						
	3735						
	3736						
	3738	H018					
	3739	H019					
	37400	H02009					
	37401	H02039					
	37402	H02029					
	37403	H02049					
	37404	H02019					
	37405	H02059					
	37410	H02109					
	37411	H02139					
	37412	H02129					
	37413	H02149					
	37414	H02119					
	37420	H02209					
	37421	H02239					
	37422	H02229					
	37423	H02219					
	37430	H02409					
	37431	H02439					
	37432	H02429					
	37433	H02419					
	37434	H0236					
	37441	H02539					
	37443	H02519					
	37444						
	37445	H0259					
	37446	H02529					
	37450	H0270					
	37451	H0266					
	37452	H02719					
	37453	H02739					
	37454	H02869					

	37455	H02729					
	37456	H0279					
	37481						
	37482	H02849					
	37483	H02859					
	37484	H02829					
	37485	H02879					
	37486	H02819					
	37487	H02839					
	37489	H0289					
	3749	H029					
Influenza	4870	J1100	J129				
	4871	J101	J111				
	4878	J112	J1181	J1189			
	488						
	4880						
	48801						
	48802						
	48809						
	4881						
	48811	J1008					
	48812						
	48819						
	48881	J09X1					
	48882	J09X2					
	48889	J09X3	J09X9				
Otitis externa and impacted cerumen	38010	H6000	H6010	H60319	H60329	H60399	
	38011	H6193					
	38012	H60339					
	38013	H6240					
	38015	H628X1					
	38016						
	38021	H6040					
	38022	H60509	H60519	H60529	H60539	H60549	
	38023	H6060	H608X1	H6090			
	3804	H6123					
Otitis media and eustachian tube diagnoses	38100	H65199					

	38101	H6500					
	38102						
	38103						
	38104	H65119					
	38105						
	38106						
	38110	H6520					
	38119						
	38120	H6530					
	38129						
	3813	H65499					
	3814	H6590					
	38150	H68009					
	38151	H68019					
	38152	H68029					
	38160	H68109					
	38161	H68119					
	38162	H68129					
	38163	H68139					
	3817	H6900					
	38181						
	38189	H6980					
	3819	H6990					
	38200	H66009					
	38201	H66019					
	38202	H679					
	3821	H6613					
	3822	H6623					
	3823	H663X9					
	3824	H6640					
	3829	H6690					
Pharyngitis	340	J020	J0300				
	341	A389					
	462	J029					
	463	J0390					
	7841	R070					
URI/sinusitis	460	J00					
	4610	J0100					
	4611	J0110					

	4612	J0120					
	4613	J0130					
	4618	J0140					
	4619	J0190					
	4640						
	46400	J040					
	46410	J0410					
	46420	J042					
	4644	J050					
	4650	J060					
	4658						
	4659	J069					
	4730	J320					
	4731	J321					
	4732	J322					
	4733	J323					
	4738	J324	J328				
	4739	J329					
	4781						
	47819	J340	J341	J3489			
UTI	5950	N3000	N3001				
	5951	N3010	N3011				
	5952	N3020	N3021				
	5953	N3030	N3031				
	5954						
	59581						
	59582	N3040	N3041				
	59589	N3080	N3081				
	5959	N3090	N3091				
	5970	N340					
	59780	N341	N342				
	59781	N343					
	59789						
	5990	N390					
	7881	R300	R309				
Viral infection	790	B970					
	791	B9712					
	792	B9711					
	793						

	794	B977					
	7950	B9730					
	7951	B9733					
	7952	B9734					
	7953	B9735					
	7959	B333	B9739				
	796	B974					
	798						
	7981	B334					
	7982	B9721					
	7983	B343					
	7988	A7489					
	7989	B338	B341	B342	B344	B348	
	799						
	7998	A749					
	7999	B9789					
Cellulitis or abscess	6800	L0202	L0203				
	6801	L0212	L0213				
	6802	L02221	L02222	L02223	L02224	L02225	
	6803	L02429					
	6804	L02529	L02539				
	6805	L0233					
	6806		L02439				
	6807	L02629	L02639				
	6808	L02821	L02828	L02831	L02838		
	6809	L0292	L0293				
	68100	L03019	L03029				
	68101						
	68102						
	68110	L03039	L03049				
	68111						
	6819						
	6820	K122	L03211	L03212			
	6821	L03221	L03222				
	6822	L03319	L03329				
	6823	L03119	L03129				
	6824						
	6825	L03317					
	6826						



	6827						
	6828	L03811	L03818	L03891	L03898		
	6829	L0390	L0391				
	683	L049					
	684	L0100	L0103				
	6850	L0501	L0502				
	6851	L0591	L0592				
	6860						
	68600	L080					
	68609						
	6861	L980					
	6868	E832	L0889				
	6869	L089					
Contusion	920	S0093XA	S1093XA				
	9210						
	9211	S0010XA					
	9212	S0510XA					
	9213						
	9219	S0590XA					
	9220	S2000XA					
	9221	S20219A					
	9222	S301XX A					
	9223						
	92231	S300XX A					
	92232						
	92233	S20229A					
	9224	S30201A	S30202A				
	9228	S303XX A					
	9229	S2020XA					
	92300	S40019A					
	92301						
	92302						
	92303	S40029A					
	92309						
	92310	S5010XA					
	92311	S5000XA					
	92320	S60229A					
	92321	S60219A					
	9233	S6000XA	S60019A	S6010XA			

	9238						
	9239						
	92400	S7010XA					
	92401	S7000XA					
	92410	S8010XA					
	92411	S8000XA					
	92420	S9030XA					
	92421	S9000XA					
	9243	S90119A	S90129A	S90229A			
	9244						
	9245						
	9248						
	9249						
Dental	5200	K000					
	5201	K001					
	5202	K002					
	5203	K003					
	5204	K004					
	5205	K005					
	5206	K006	K010	K011			
	5207	K007					
	5208	K008					
	5209	K009					
	5210						
	52100	K029					
	52101	K0261					
	52102	K0262					
	52103	K0263					
	52104	K023					
	52105						
	52106	K0251					
	52107						
	52108	K027					
	52109						
	5211						
	52110	K030					
	52111						
	52112						
	52113						
	52114						

	52115						
	5212						
	52120						
	52121	K031					
	52122						
	52123						
	52124						
	52125						
	5213						
	52130						
	52131	K032					
	52132						
	52133						
	52134						
	52135						
	5214						
	52140	K033					
	52141						
	52142						
	52149						
	5215	K034					
	5216	K035					
	5217	K037					
	52181	K0381					
	52189	K0389					
	5219	K039					
	5220	K040					
	5221	K041					
	5222	K042					
	5223	K043					
	5224	K044					
	5225	K047					
	5226	K045					
	5227	K046					
	5228	K048					
	5229	K0490	K0499				
	5230						
	52300	K0500					
	52301	K0501					
	5231						
	52310	K0510					

	52311	K0511					
	5232						
	52320	K060					
	52321						
	52322						
	52323						
	52324						
	52325						
	5233						
	52330	K0520					
	52331	K0521					
	52332	K0522					
	52333						
	5234						
	52340	K0530					
	52341	K0531					
	52342	K0532					
	5235	K054					
	5236	K036					
	5238	K055	K061	K062			
	5239	K056					
	87363	S025XX A	S025XX B				
	87373						
Dislocation/sprain	7361	M20019					
	83100	S43006A					
	83101	S43016A					
	83102	S43026A					
	83103	S43036A					
	83104	S43109A					
	83109	S43086A					
	83110	S41009A					
	83111						
	83112						
	83113						
	83114						
	83119						
	83200	S53006A	S53106A				
	83201		S53116A				
	83202	S53026A					
	83203	S53136A					

	83204	S53146A					
	83209	S53096A	S53196A				
	83210						
	83211		S53016A				
	83212						
	83213						
	83214						
	83219						
	8322	S53033A					
	83400	S63106A	S63259A				
	83401	S63116A	S63269A				
	83402	S63126A	S63279A	S63289A	S63299A		
	83410						
	83411						
	83412	S61009A					
	8360	S83219A	S83249A				
	8361	S83289A					
	8362	S83209A	S8330XA				
	8400	S4350XA					
	8401	S4380XA					
	8402	S43419A					
	8403						
	8404	S43429A					
	8405						
	8406						
	8407	S43439A					
	8408	S43499A	S46019A	S46119A	S46819A		
	8409	S43409A	S46919A				
	8410	S53439A					
	8411	S53449A					
	8412	S53419A					
	8413	S53429A					
	8418	S53499A					
	8419	S53409A	S56919A				
	84200	S63509A	S66919A				
	84201	S63519A					
	84202	S63329A	S63529A				
	84209	S63599A					
	84210	S6390XA					
	84211	S638X9A					
	84212	S63649A	S63659A				

	84213	S63629A	S63639A				
	84219						
	8430	S73119A					
	8431	S73129A					
	8438	S73199A					
	8439	S73109A	S76919A				
	8440	S83429A					
	8441	S83419A					
	8442	S83509A					
	8443	S8360XA					
	8448	S838X9A	S86819A				
	8449	S8390XA	S86919A				
	84500	S93409A					
	84501	S93429A					
	84502	S93419A					
	84503	S93439A					
	84509	S86019A	S93499A				
	84510	S93609A	S96919A				
	84511	S93629A					
	84512	S93529A					
	84513	S93519A					
	84519	S93699A					
	8460	S338XX A					
	8461	S336XX A					
	8462						
	8463						
	8468						
	8469	S339XX A					
	8470	S134XX A	S138XX A				
	8471	S233XX A	S238XX A				
	8472	S335XX A					
	8473						
	8474						
	8479	S239XX A					
	8480	S031XX A					
	8481	S034XX A					
	8482	S135XX					

		A					
	8483	S2341XA					
	84840	S23429A					
	84841	S23420A					
	84842	S23421A					
	84849	S23428A					
	8485						
	8488	S039XX A	S29019A	S39011A			
	8489	T1490					
Fracture	8020	S022XX A					
	80700						
	80701	S2239XA					
	80702						
	80703						
	80704						
	80705						
	80706						
	80707						
	80708						
	80709	S2249XA					
	8072	S2220XA					
	8080	S32409A					
	8082	S32501A	S32502A	S32509A			
	80841	S32309A					
	80842	S32609A					
	80849	S3289XA					
	8088	S329XX A					
	8090	S229XX A					
	81000	S42009A					
	81001	S42013A	S42016A	S42019A			
	81002	S42023A	S42026A				
	81003	S42033A	S42036A				
	81100	S42109A					
	81101	S42123A	S42126A				
	81102	S42133A	S42136A				
	81103	S42143A	S42146A	S42153A	S42156A		
	81109	S42113A	S42116A	S42199A			
	81200	S42209A					

	81201	S42213A	S42216A				
	81202		S42295A				
	81203	S42253A	S42256A				
	81209	S42293A	S42296A				
	81220	S42309A					
	81221	S42399A					
	81230	S42309B					
	81231	S42399B					
	81240	S42409A					
	81241	S42413A	S42416A				
	81242	S42433A	S42436A	S42453A	S42456A		
	81243	S42443A	S42446A	S42463A	S42466A		
	81244	S42473A	S42476A				
	81249	S42493A	S42496A				
	81300						
	81301	S52023A	S52026A				
	81302	S52043A	S52046A				
	81303	S52279A					
	81304	S52009A	S52099A				
	81305	S52123A	S52126A				
	81306	S52133A	S52136A				
	81307	S52109A	S52189A	S59109A			
	81308						
	81320						
	81321	S52309A					
	81322	S52209A					
	81323						
	81340						
	81341	S52539A					
	81342	S52509A					
	81343	S52609A					
	81344						
	81345	S52119A	S52529A				
	81346	S52019A	S52629A				
	81347	S52011A	S52012A	S52111A	S52112A	S52521A	
	81380	S5290XA					
	81381						
	81382						
	81383						
	81400	S62109A					
	81401	S62009A					



	81402	S62123A	S62126A				
	81403	S62113A	S62116A				
	81404	S62163A	S62166A				
	81405	S62173A	S62176A				
	81406	S62183A	S62186A				
	81407	S62133A	S62136A				
	81408	S62143A	S62146A				
	81409	S62153A	S62156A				
	81500	S62309A					
	81501	S62233A	S62236A				
	81502	S62319A	S62349A				
	81503	S62329A	S62359A				
	81504	S62339A	S62369A				
	81509	S62399A					
	81600	S62509A	S62609A				
	81601	S62513A	S62516A	S62629A	S62649A	S62659A	
	81602	S62523A	S62526A	S62639A	S62669A		
	81603						
	8170						
	8180	S6290XA					
	8190			S4290XA	S4291XA	S4292XA	
	8220	S82009A					
	82300	S82109A					
	82301	S82839A					
	82302	S82101A	S82102A	S82831A	S82832A		
	82320	S82209A					
	82321	S82409A					
	82322		S82202A		S82402A		
	82340	S82169A	S82319A				
	82341	S82819A	S82829A				
	82342	S82161A	S82162A	S82311A	S82312A	S82811A	
	82380	S82201A					
	82381	S82401A					
	82382						
	8240	S8253XA	S8256XA				
	8242	S8263XA	S8266XA				
	8244	S82843A	S82846A				
	8246	S82853A	S82856A				
	8248	S82899A					
	8250	S92009A					
	82520	S92909A					

	82521	S92109A					
	82522	S92253A	S92256A				
	82523	S92213A	S92216A				
	82524	S92223A	S92226A	S92233A	S92236A	S92243A	S92246A
	82525	S92309A					
	82529	S92209A					
	8260	S92403A	S92406A	S92503A	S92506A		
Joint and muscle pain, tendonitis, bursitis	71530	M1990					
	71531						
	71532						
	71533						
	71534	M189					
	71535	M169					
	71536	M179					
	71537						
	71538						
	71590	M159					
	71591						
	71592						
	71593						
	71594						
	71595						
	71596						
	71597						
	71598						
	71940	M2550					
	71941	M25519					
	71942	M25529					
	71943	M25539					
	71944	M79643	M79646				
	71945	M25559					
	71946	M25569					
	71947	M25579					
	71948						
	71949						
	7260	M7500					
	72610	M75100	M7550				
	72611	M7530					
	72612	M7520					

	72613	M75110					
	72619						
	7262		M7540	M7580			
	72630	M25729					
	72631	M7700					
	72632	M7710					
	72633	M7020					
	72639						
	7264	M7010	M7720				
	7265	M7060	M7070	M7610	M7620		
	72660	M7050					
	72661	M76899					
	72662	M7640					
	72663						
	72664	M7650					
	72665	M7040					
	72669						
	72670		M7740				
	72671	M7660					
	72672	M76829					
	72673	M7730					
	72679	M7750					
	7268	M778					
	72690	M779					
	72691	M2570					
	72700	M659					
	72701						
	72702	D481					
	72703	M6530					
	72704	M654					
	72705	M65849					
	72706	M65879					
	72709	M6580					
	7271	M2010					
	7272	M70039	M7030				
	7273	M7150					
	72740						
	72741	M67419	M67429	M67439	M67449	M67459	
	72742						
	72743	M6740					
	72749	M7130					

	72750	M6610					
	72751	M7120					
	72759	M6618					
	72760	M669					
	72761	M75120					
	72762	M66829					
	72763	M66239	M66249				
	72764	M66339	M66349				
	72765	M66259					
	72766	M66269					
	72767	M66369					
	72768	M66879					
	72769	M6688					
	72781	M6700					
	7279	M6790	M719				
	72782	M6520	M7140				
	72783	M6750					
	72789	M6500	M6780	M6788	M7100	M7180	
	72882	M6020					
	72885	M6240	M62838				
	7291	M609	M791	M797			
	7292	M5410	M792				
Laceration	8730	S0100XA					
	87320	S0120XA	S0121XA	S0123XA	S0125XA		
	87329	S08811A					
	87340	S0993XA					
	87341	S01409A					
	87342						
	87343	S01501A					
	87344						
	87349	S0180XA					
	87360	S01502A					
	87361						
	87362						
	87364						
	87365						
	87369	S01512A					
	8738	S0190XA	S0990XA				
	8760	S21209A	S31000A				
	8770	S31809A					

	8792	S31102A	S31105A				
	8794	S31109A					
	8796						
	8798						
	88003	S41109A					
	88100	S51809A					
	88101	S51009A					
	88102	S61509A					
	8820	S61409A					
	8830	S61209A					
	8900	S71009A	S71109A				
	8910	S81009A	S81809A	S91009A			
	8920	S91309A					
	8930	S91109A					
	8940						
Other urinary problem	5991	N360					
	5992	N361					
	5993	N362					
	5994	N365					
	5995						
	5996						
	59960	N139					
	59969						
	5997						
	59970	R319					
	59971	R310					
	59972	R311	R312				
	5998						
	59981	N3641					
	59982	N3642					
	59983						
	59984	N368					
	59989	N398					
	5999	N369	N399				

<sup>a</sup>In some cases, crosswalk from ICD-9 resulted in multiple ICD-10 codes