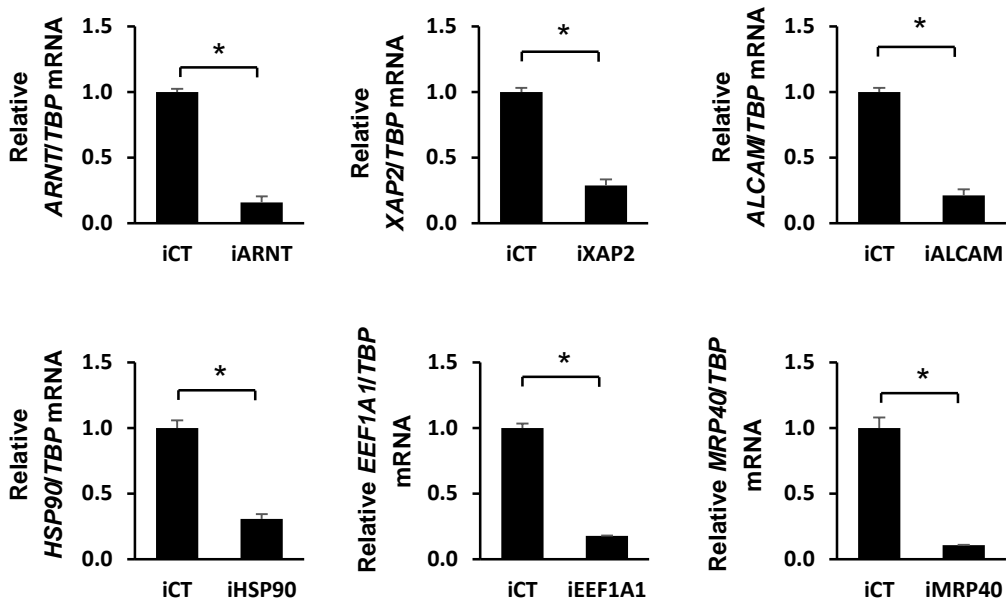


### Supplement Figure 3



**Supplemental Figure 3.** RNA interference efficiencies. Cells were transfected with a non-specific control vector (iCT) or oligonucleotides targeting ARNT (iARNT), XAP2 (iXAP2), ALCAM (iALCAM), Hsp90 (iHsp90), EE1A1 (iEEF1A1), and MRP40 (iMRP40). The corresponding mRNAs were determined by real time PCR. Results are means  $\pm$  SE for 3 replicate determinations. Significantly ( $p < 0.05$ ) decreased mRNA levels are indicated (\*).