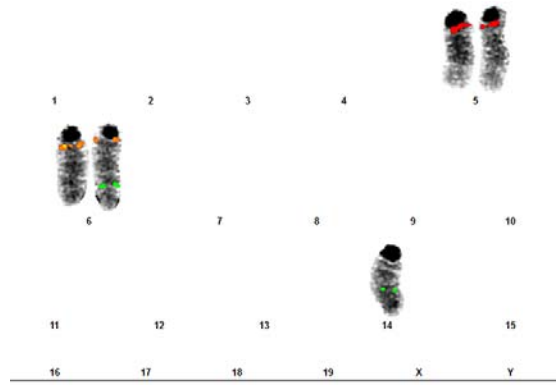
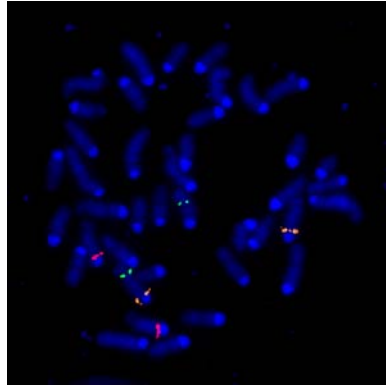
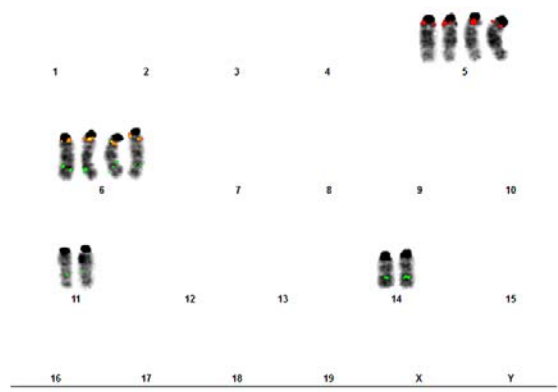
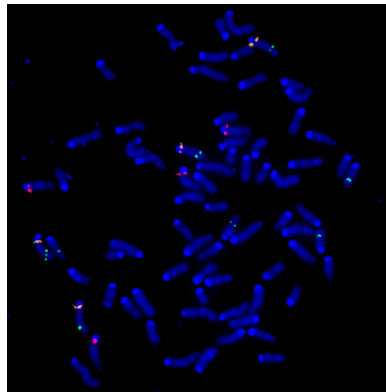


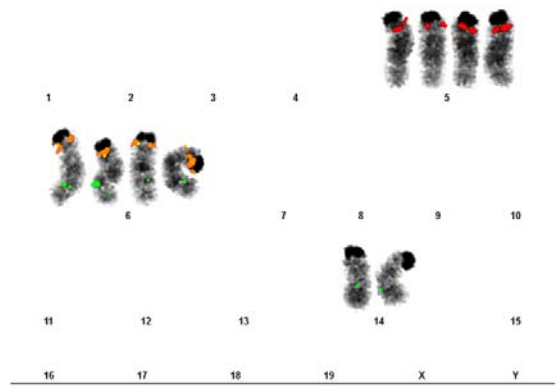
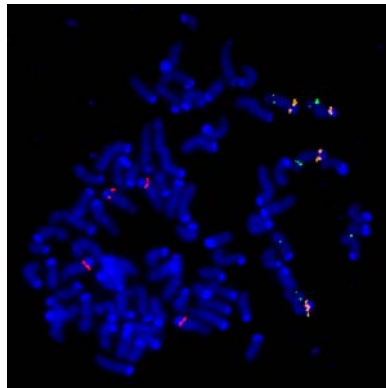
NF1-MET
Spleen
Mouse #951



NF1-MET
MPNST
Mouse #951



NF1-MET
MPNST
Mouse #981



Supplementary Figure 3: Metaphase FISH analysis of R26-MET transgene. FISH probes r26-MET plasmid green, 6A2-1 (mouse Met) orange, and 5A2-2 (mouse HGF) red were used on normal spleen and MPNSTs from NF1-MET mice.