

S2 Supporting Information

Deuterium isotope effects in drug pharmacokinetics II: Substrate-dependence of the reaction mechanism influences outcome for cytochrome P450 cleared drugs

Hao Sun,* David W. Piotrowski*, Suvi T. M. Orr, Joseph S. Warmus, Angela C. Wolford, Stephen B. Coffey, Kentaro Futatsugi, Yinsheng Zhang and Alfin D. N. Vaz*

Medicine Design, Pfizer Global Research and Development, Groton, Connecticut, United States of America

Fig A.

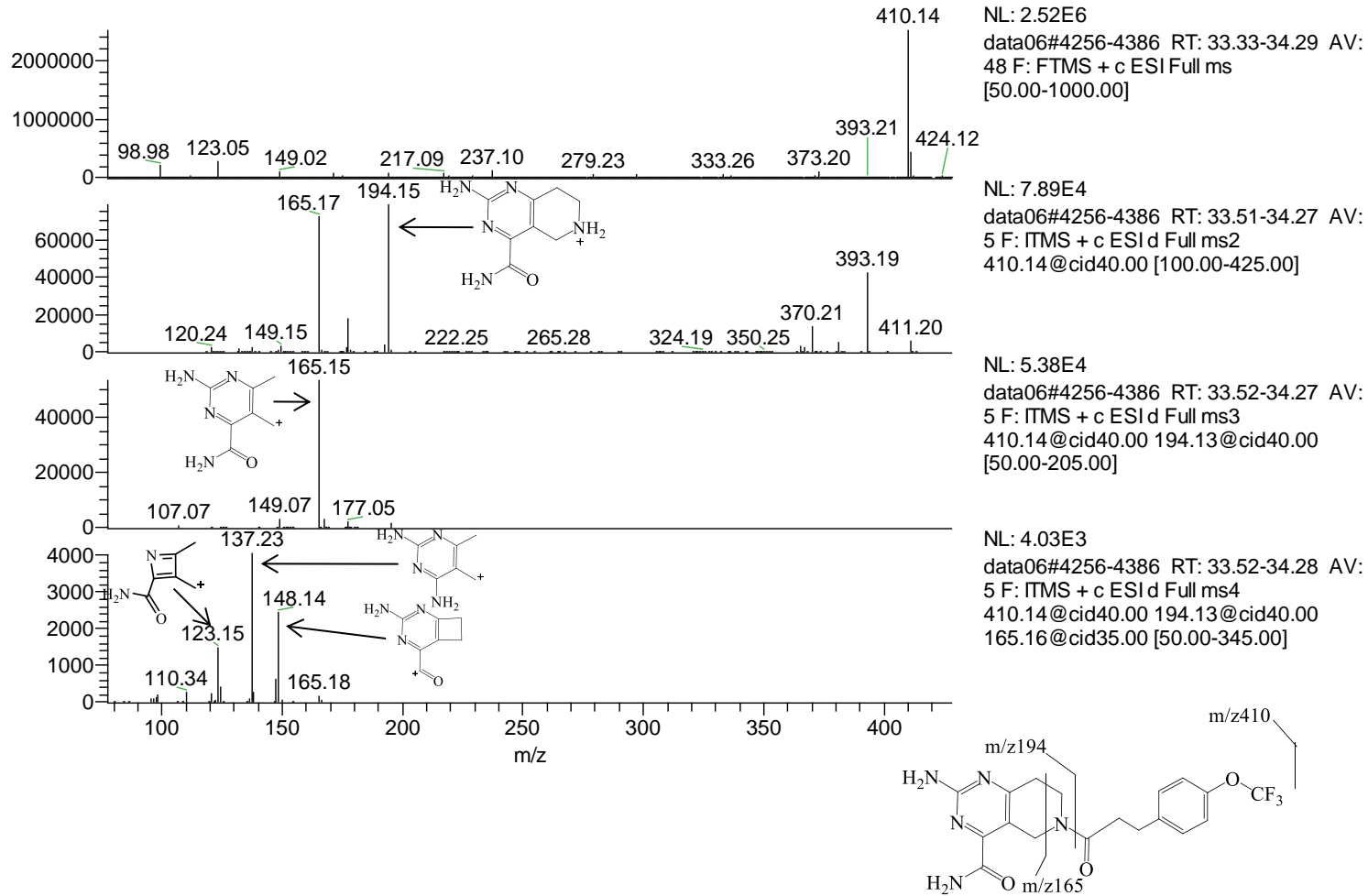


Fig B.

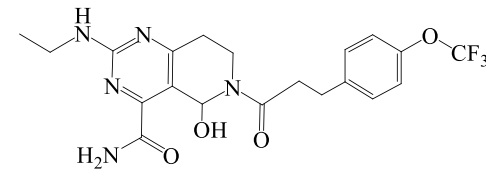
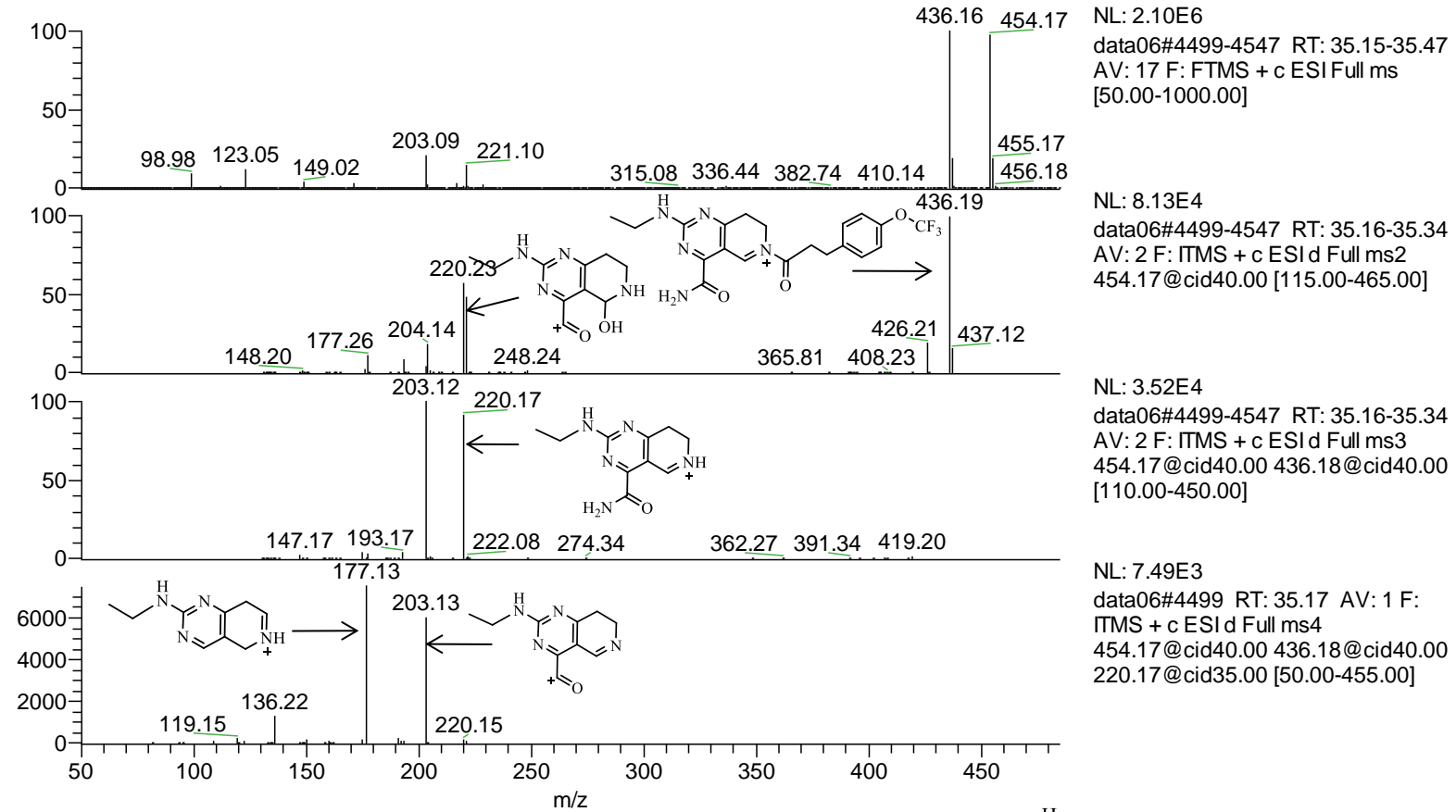
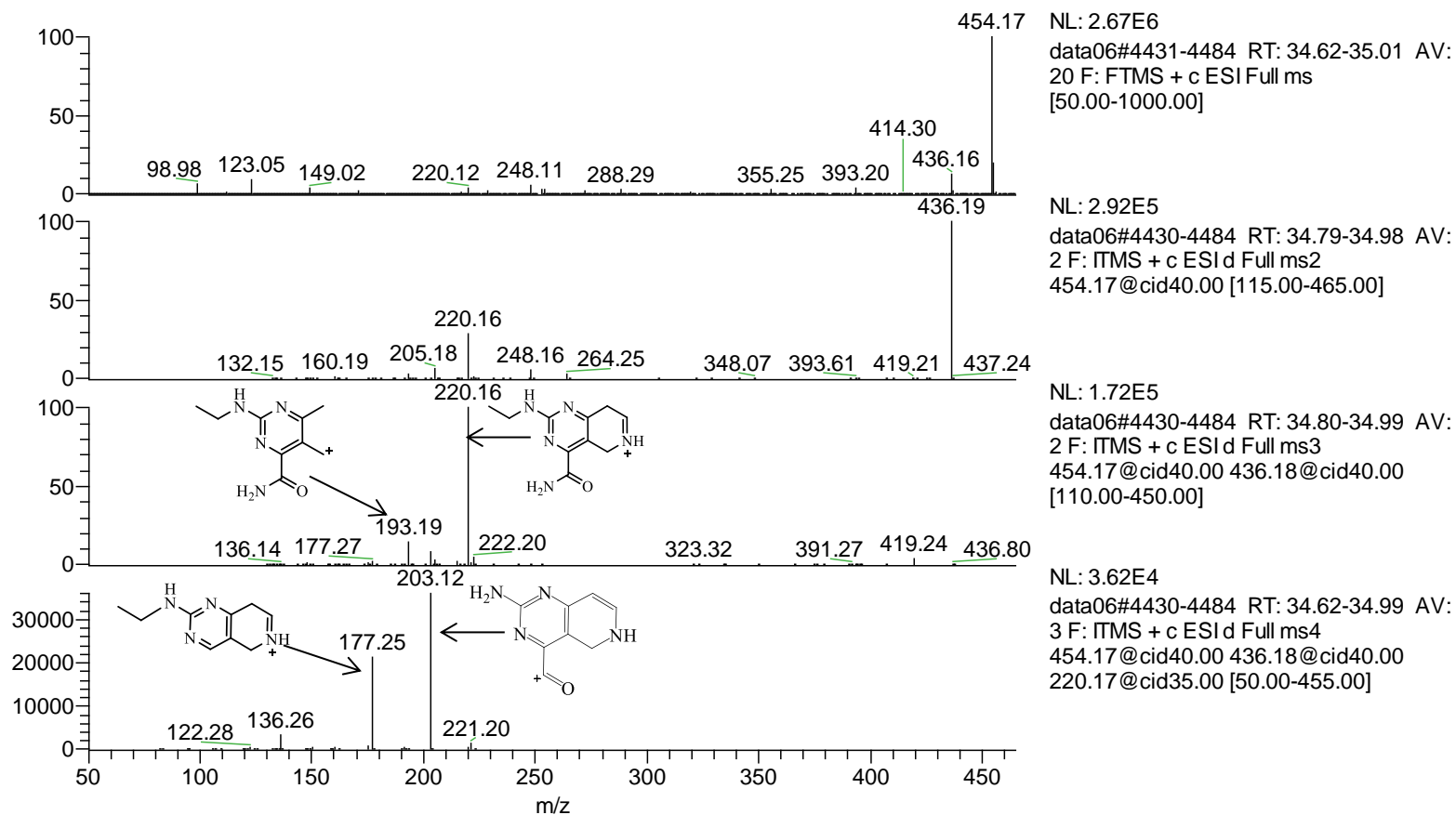


Fig C.



Integration = 0.63 E8 MS; 0.03 E6 UV

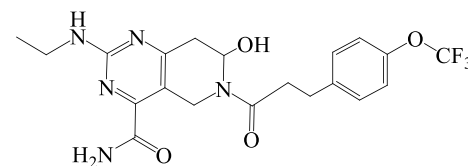
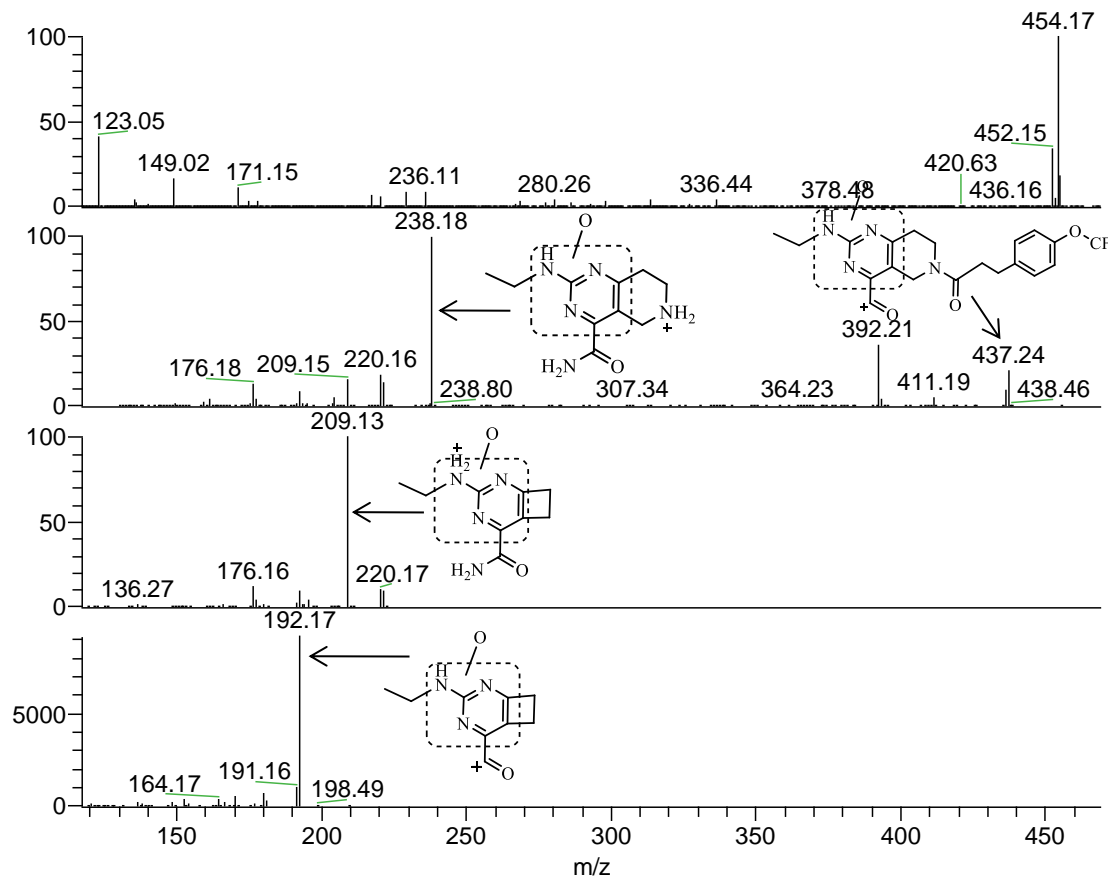


Fig D.



NL: 6.55E5
data06#4629-4678 RT: 36.09-36.45 AV:
20 F: FTMS + c ESI Full ms
[50.00-1000.00]

NL: 3.04E4
data06#4629-4678 RT: 36.10-36.46 AV:
3 F: ITMS + c ESI d Full ms2
454.17@cid40.00 [115.00-465.00]

NL: 1.83E4
data06#4629-4678 RT: 36.10-36.28 AV:
2 F: ITMS + c ESI d Full ms3
454.17@cid40.00 238.27@cid40.00
[55.00-250.00]

NL: 9.16E3
data06#4629-4678 RT: 36.11-36.29 AV:
2 F: ITMS + c ESI d Full ms4
454.17@cid40.00 238.16@cid40.00
209.11@cid35.00 [50.00-430.00]

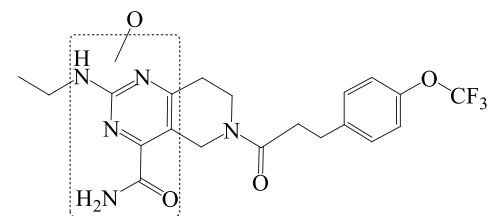
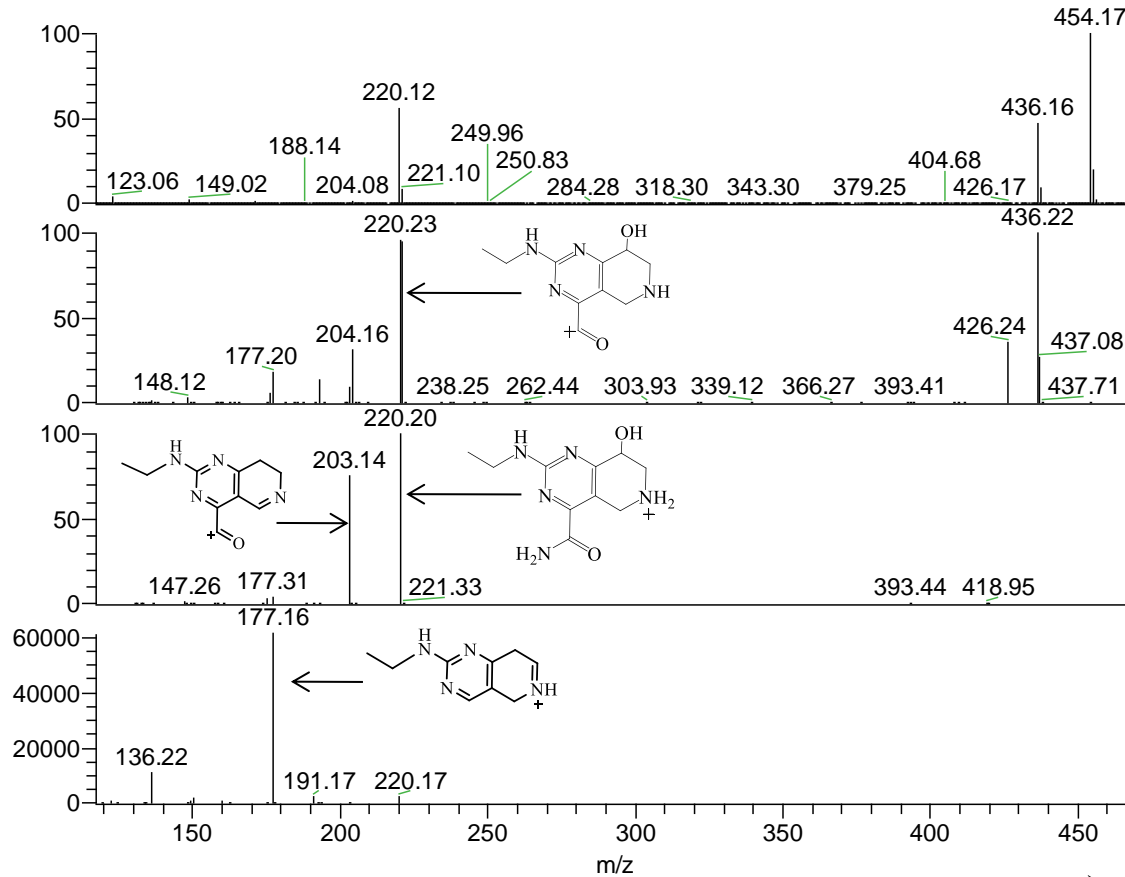


Fig E.



NL: 5.84E6
 data06#4756-4817 RT: 37.07-37.47
 AV: 20 F: FTMS + c ESI Full ms
 [50.00-1000.00]

NL: 1.56E5
 data06#4757-4817 RT: 37.08-37.44
 AV: 3 F: ITMS + c ESI d Full ms2
 454.17@cid40.00 [115.00-465.00]

NL: 1.69E5
 data06#4757 RT: 37.26 AV: 1 F:
 ITMS + c ESI d Full ms3
 454.17@cid40.00 436.18@cid40.00
 [110.00-450.00]

NL: 6.11E4
 data06#4757 RT: 37.26 AV: 1 F:
 ITMS + c ESI d Full ms4
 454.17@cid40.00 436.18@cid40.00
 220.17@cid35.00 [50.00-455.00]

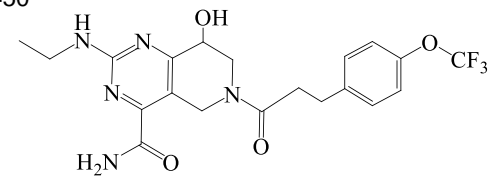


Fig F.

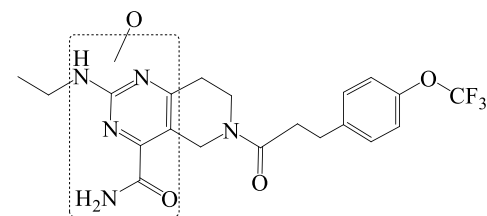
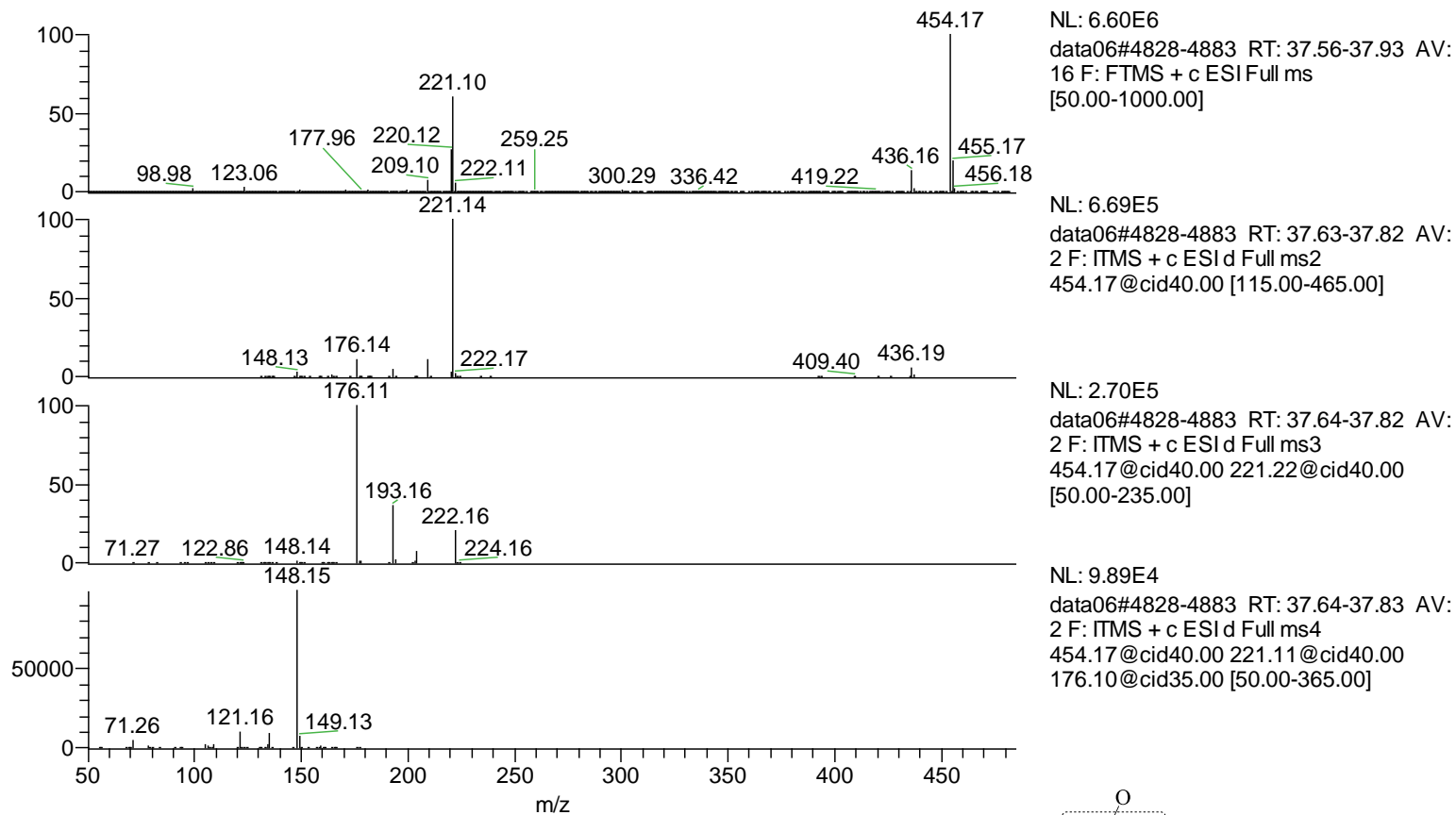
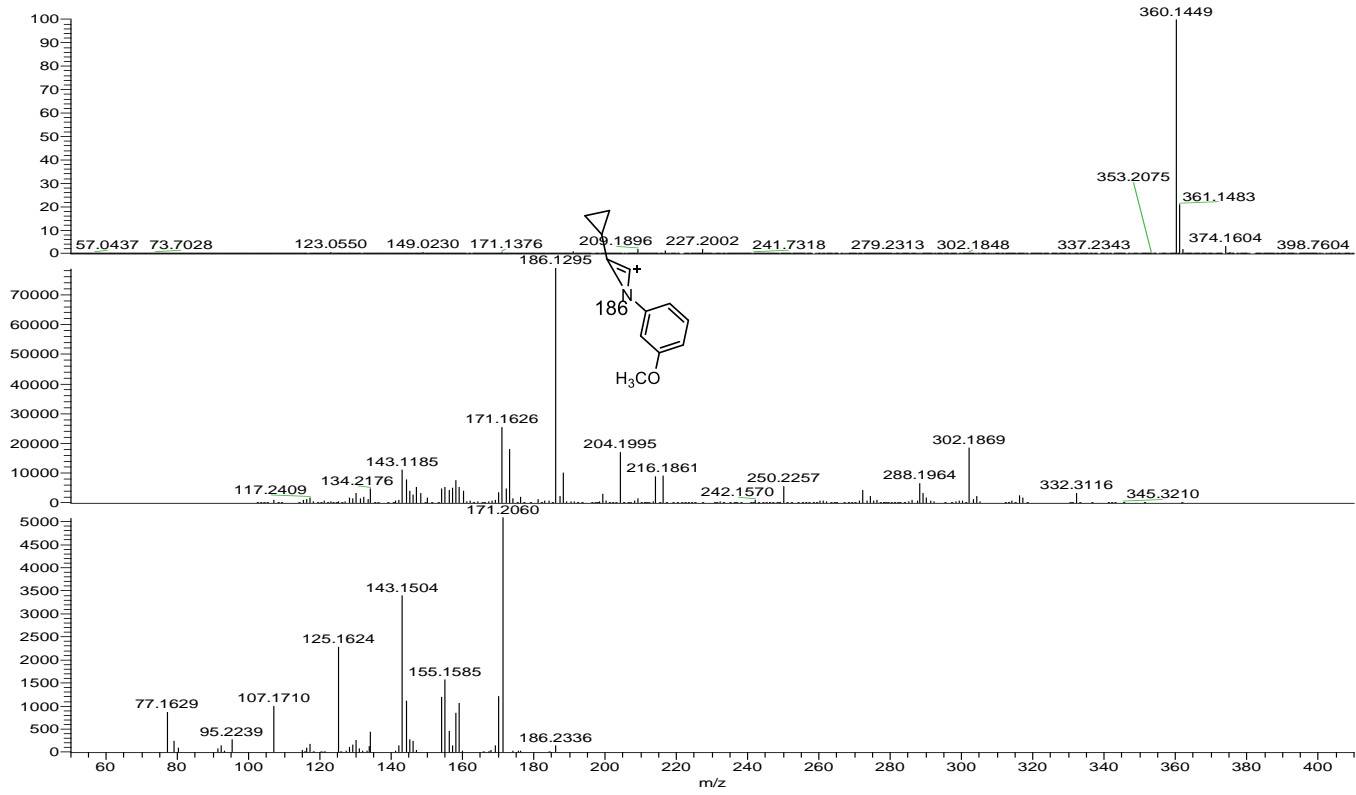


Fig G.



NL: 6.81E6
 data07#5461-5555 RT:
 43.61-44.28 AV: 36 F: FTMS +
 + c ESI Full ms
 [50.00-1000.00]

NL: 7.88E4
 data07#5461-5556 RT:
 43.64-44.18 AV: 4 F: ITMS +
 c ESI d Full ms2
 360.14@cid40.00
 [85.00-375.00]

NL: 5.08E3
 data07#5461-5556 RT:
 43.64-44.19 AV: 4 F: ITMS +
 c ESI d Full ms3
 360.14@cid40.00
 186.14@cid40.00
 [50.00-200.00]

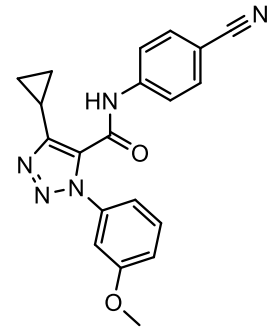


Fig H.

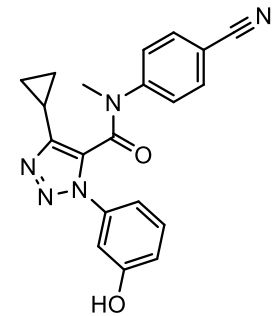
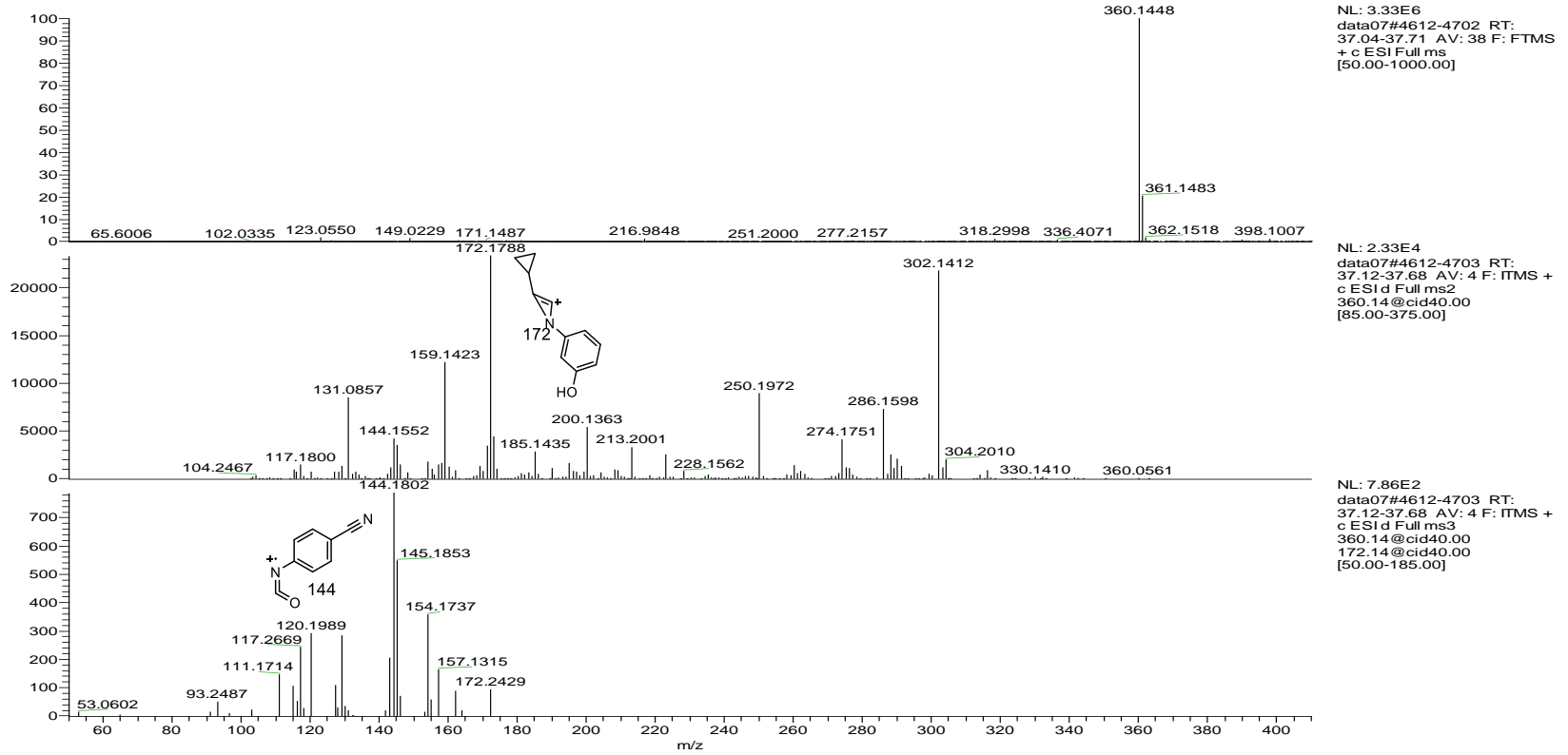


Fig I.

