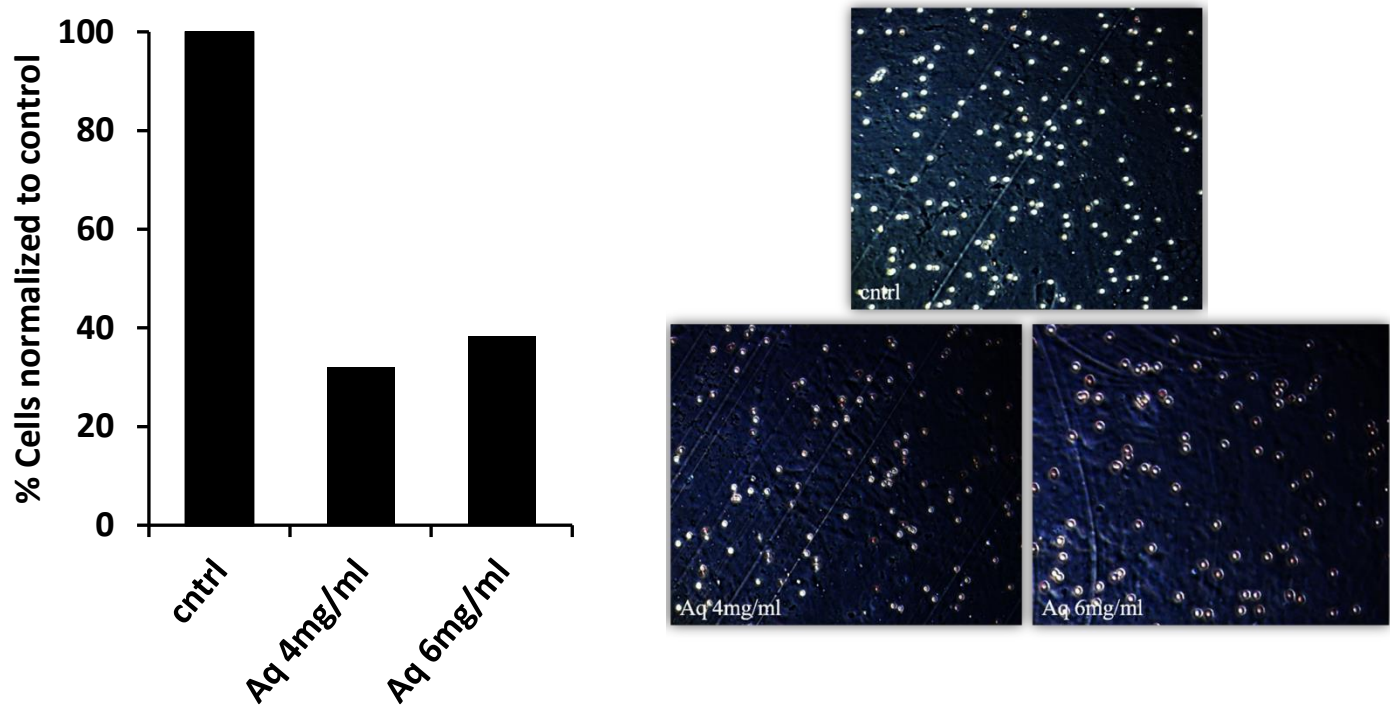
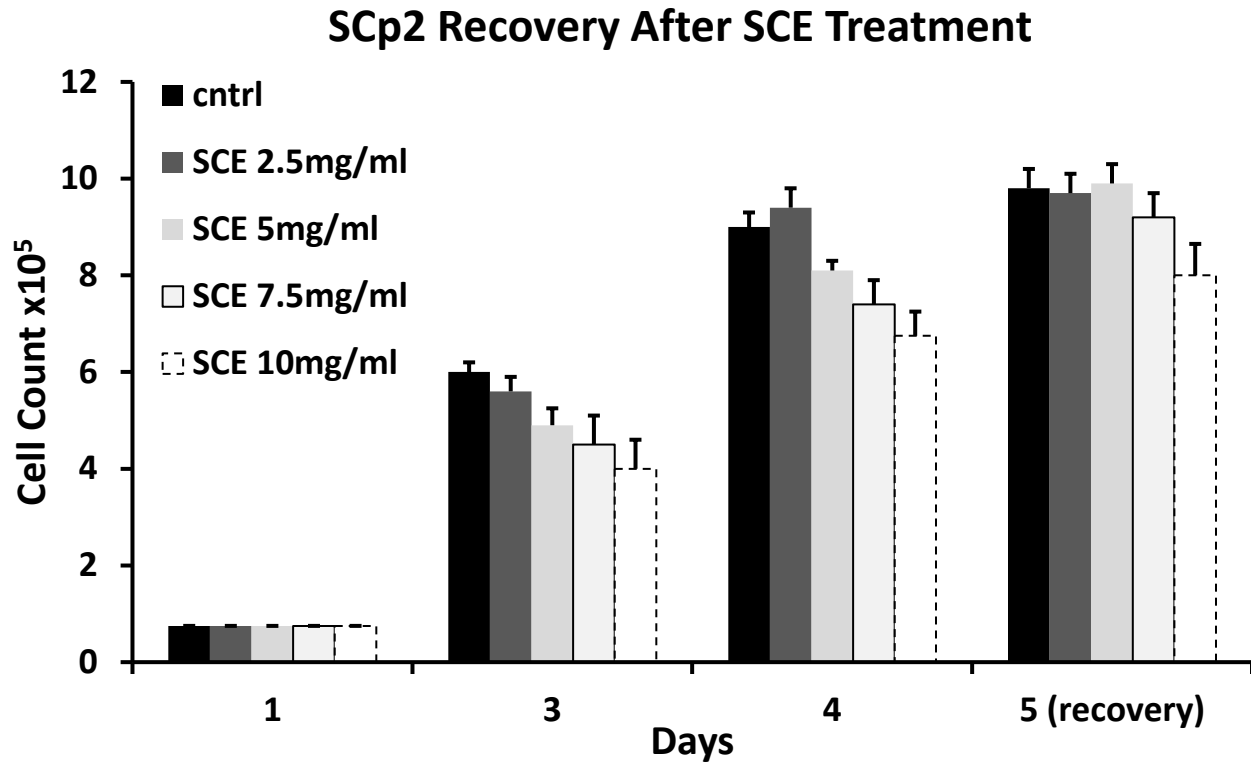


Supplementary Figure 1



Supplementary figure 1: Effect of Aq fraction on trans-well invasion potential of MDA-MB-231. (A) Histogram analysis of cntrl and Aq treated cells showing around 70% decrease in invasion of Aq treated cells at 4mg/ml and 6mg/ml compared to cntrl through Matrigel diluted 1:20 in cell culture media. (B) Representative phase contrast images, at low power, of cntrl and Aq treated MDA-MB-231 cells that invaded through the Matrigel (diluted 1:20). Cells that invaded across the Matrigel layer from 10 random fields per well were counted (N=1).



Supplementary figure 2: Effect of SCE treatment on the proliferation of SCp2 cells. Growth analysis by trypan blue showed no effect by SCE at 2.5mg/ml on day 4 and approximately 10, 18, and 30% decrease at 5, 7.5, and 10mg/ml respectively. Cells treated with 5 and 7.5mg/ml show total recovery while 10mg/ml show partial recovery within one day (at day 5) after treatment washout. Samples were run in triplicate wells (N=1) and represented as cell counts \pm S.D.