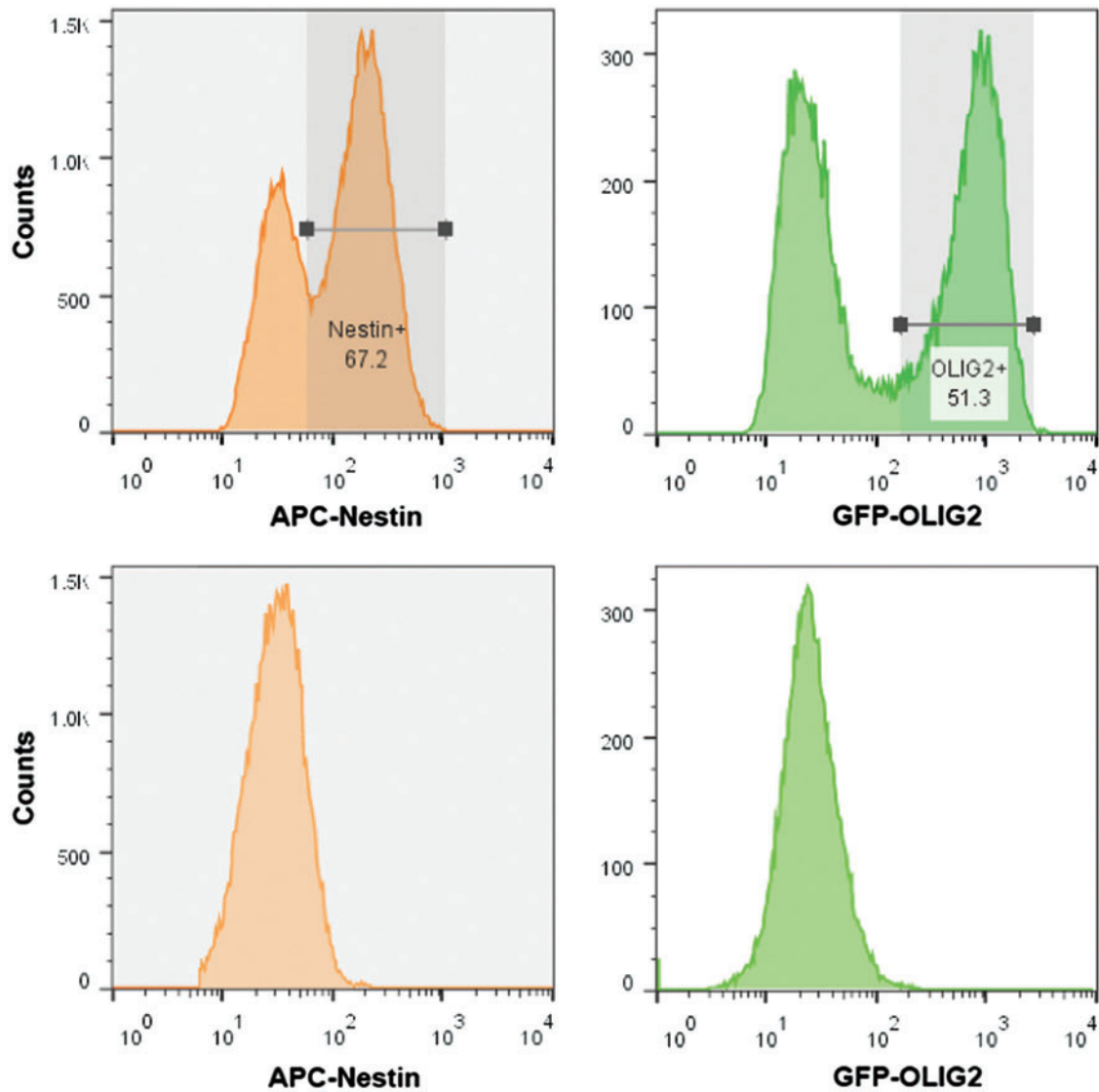


Supplementary Data



SUPPLEMENTARY FIG. S1. Flow cytometry was used to generate histograms of cell counts cultured within bridges or neurospheres to evaluate Nestin⁺ and Nestin⁺OLIG2⁺ phenotypes. Cells were gated for the following: singlets > viable cells > Nestin > OLIG2. Examples of positive samples (*top*) and negative staining controls (*bottom*) are provided for each phenotype.