

Supplemental Figure 4

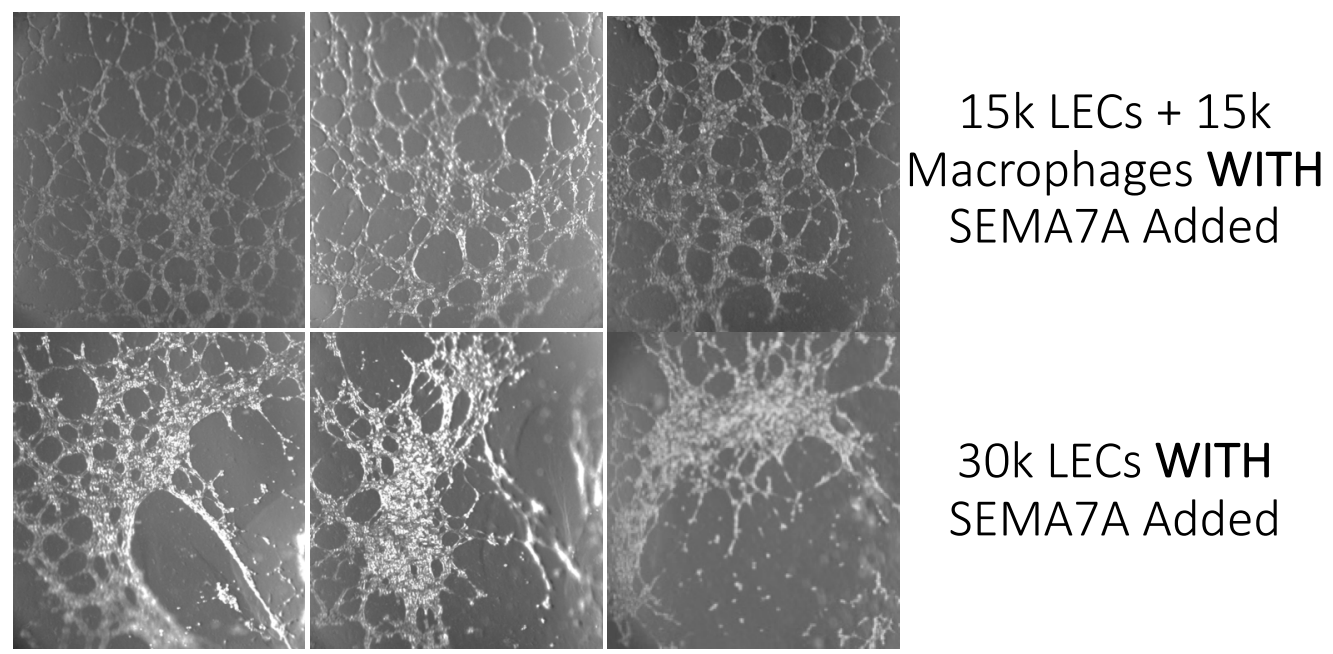
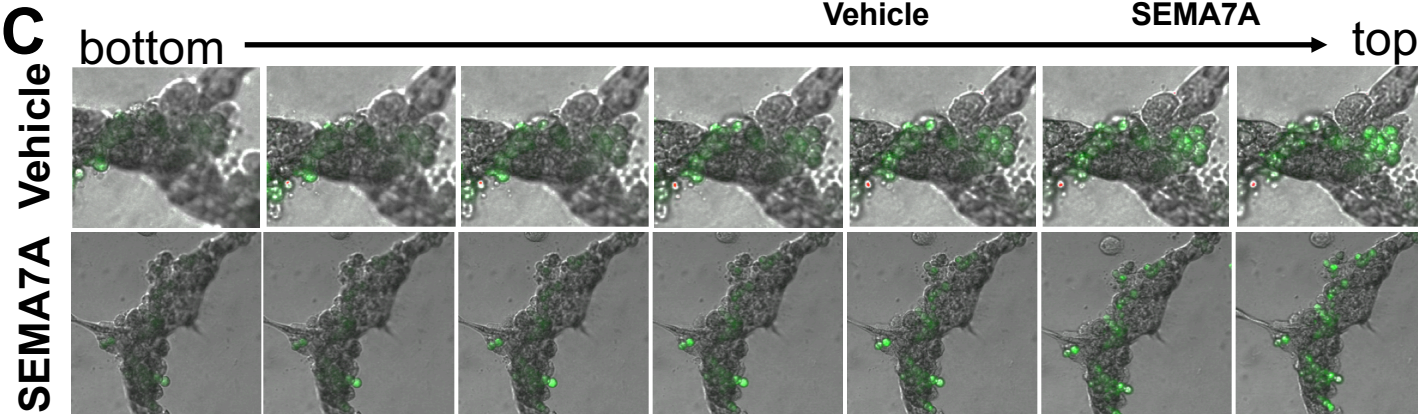
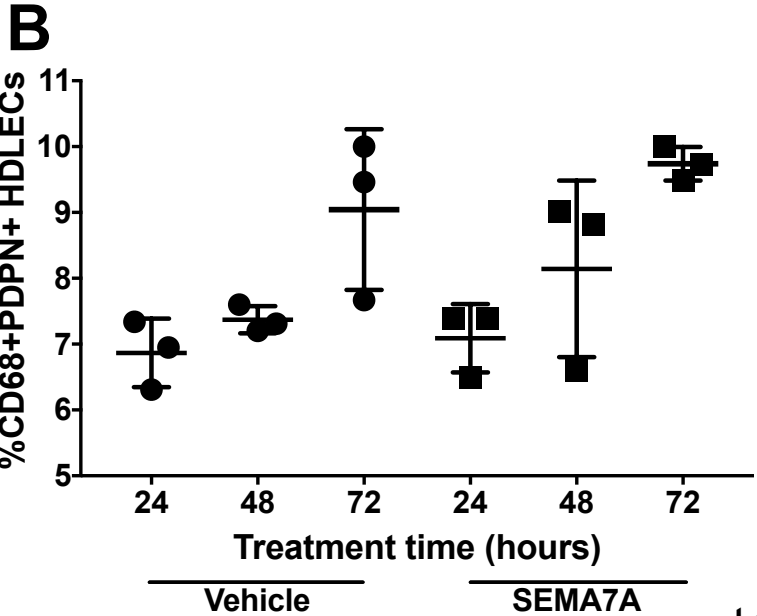
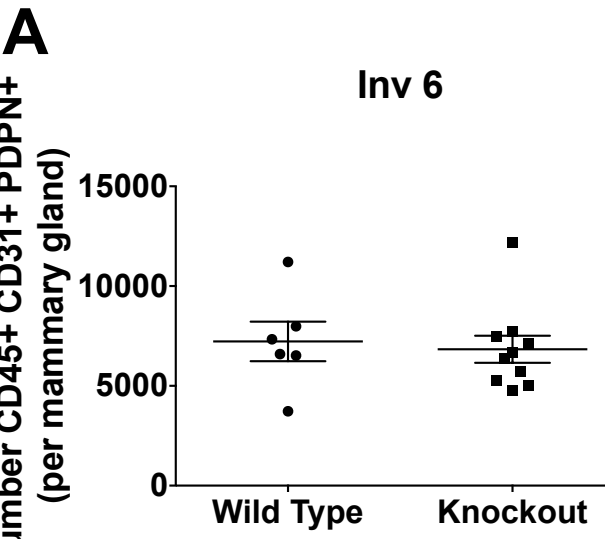


Figure 4: A) Number of CD45+CD31+PDPN+ cells per mammary gland in wild-type and SEMA7A knockout mice at involution day 6. B) Quantification of flow cytometry performed on human dermal lymphatic endothelial cells (HDLECs) in culture expressing macrophage marker CD68 at 24, 48, and 72 hours post-seeding. C) z-stack analysis of 3D macrophage (green) lymphatic structures 24 hours post-seeding. D) Representative images of 3D in vitro lymphatic structures with 15K LECs and 15K macrophages compared to 30K LECs. All conditions were cultured in the presence of SEMA7A.