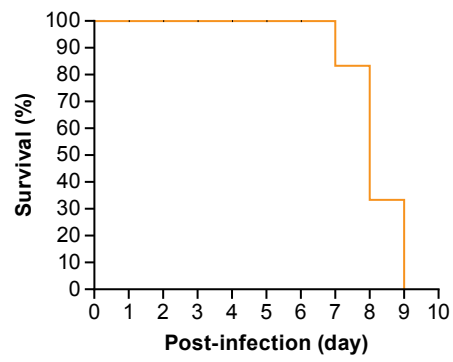


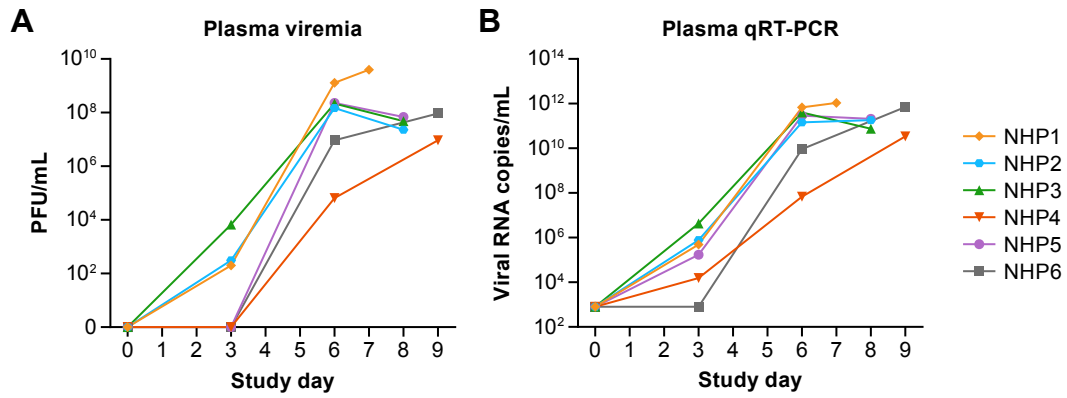
Supplemental figure 1. Relevant serum chemistry and blood cell counts for MARV infected rhesus macaques. X-axis is post-infection day; B1 and B2 are baseline values collected two weeks and one week pre-infection, respectively. Serum calcium is corrected for hypoproteinemia by the formula (measured serum calcium – (0.4 x total protein) + 3.3) [1].

Reference:

1. Ferguson DC, Hoenig M. Endocrine System. In: Latimer KS, Mahaffey EA, Prasse KW, eds. Duncan and Prasse's Veterinary Laboratory Medicine: clinical pathology. Fourth ed. Ames, IA: Iowa State Press, 2003:270-303.



Supplemental figure 2. Survival curve for MARV infected rhesus macaques.



Supplemental figure 3. Development of viremia in MARV infected rhesus macaques. Development of viremia was charted using the Avicel plaque assay and by qRT-PCR using the BEI Resources Critical Reagents Program (CRP) MARV Angola qRT-PCR kit.