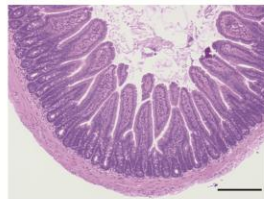
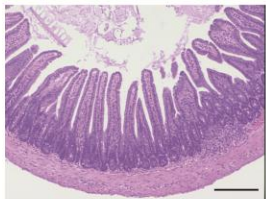


ACD45RB^{hi} → $Rag1^{-/-}$ CD45RB^{hi} → $Rag1^{-/-}Ccl25^{-/-}$ **B**CD45RB^{hi} → $Rag1^{-/-}$
CD45RB^{hi} → $Rag1^{-/-}Ccl25^{-/-}$ **C**CD45RB^{hi} → $Rag1^{-/-}$ CD45RB^{hi} → $Rag1^{-/-}Ccl25^{-/-}$ 

Ileum

Supplemental Digital Content 2.

Enhanced colitis and splenomegaly in $Rag1^{-/-}Ccl25^{-/-}$ recipient mice following WT naïve T cell transfer.

(A) Macroscopic view of SPLs harvested from $Rag1^{-/-}$ and $Rag1^{-/-}Ccl25^{-/-}$ host mice adoptively transferred with naïve CD45RB^{hi} CD4⁺ T cells. Data representative of 1 experiment out of 5.

(B) Macroscopic view of terminal ileums, caecums and colons harvested from $Rag1^{-/-}$ and $Rag1^{-/-}Ccl25^{-/-}$ host mice adoptively transferred with naïve CD45RB^{hi} CD4⁺ T cells.

(C) Representative H&E staining of $Rag1^{-/-}$ and $Rag1^{-/-}Ccl25^{-/-}$ ileums isolated from recipient mice after naïve CD4⁺ T cell transfer.