

## **SUPPLEMENTARY MATERIALS**

**Supplementary Table 1. Trends in the therapeutic parameters**

	<b>Omega-3 (+) (N = 30)</b>	<b>Omega-3 (-) (N =136)</b>	<b>p value</b>
<i>At follow-up start</i>			
PT-INR	2.0 (1.8, 2.5)	2.2 (1.9, 2.6)	0.07
Aspirin dose, mg	81 (81, 162)	81 (81, 162)	0.67
LVAD speed, rpm			
Axial LVAD	9037.5 ± 373.9	9130.5 ± 325.7	0.34
Centrifugal LVAD	2625.0 ± 149.1	2672.2 ± 124.8	0.45
ACEI or ARB	16	54	0.12
Beta-blocker	15	51	0.15
Aldosterone antagonist	16	55	0.14
<i>At first month</i>			
PT-INR	1.8 (1.5, 2.7)	2.1 (1.7, 2.5)	0.81
Aspirin dose, mg	81 (81, 162)	81 (0, 81)	0.16
LVAD speed, rpm			
Axial LVAD	9137.5 ± 348.1	9166.7 ± 332.2	0.72
Centrifugal LVAD	2656.0 ± 178.5	2673.0 ± 118.4	0.76
ACEI or ARB	19	66	0.15
Beta-blocker	20	63	0.07
Aldosterone antagonist	18	57	0.08
<i>At third months</i>			
PT-INR	2.0 (1.3, 2.3)	2.1 (1.7, 2.7)	0.16

Aspirin dose, mg	81 (81, 81)	81 (81, 162)	0.22
LVAD speed, rpm			
Axial LVAD	9142.9 ± 276.6	9227.9 ± 379.3	0.46
Centrifugal LVAD	2635.0 ± 166.0	2571.7 ± 218.7	0.77
ACEI or ARB	18	70	0.41
Beta-blocker	19	64	0.15
Aldosterone antagonist	17	55	0.14
<i>At sixth months</i>			
PT-INR	2.0 (1.5, 2.2)	2.0 (1.6, 2.3)	0.81
Aspirin dose, mg	81 (81, 325)	81 (81, 162)	0.10
LVAD speed, rpm			
Axial LVAD	9184.6 ± 276.4	9252.5 ± 276.4	0.54
Centrifugal LVAD	2745.0 ± 191.4	2659.2 ± 117.3	0.48
ACEI or ARB	17	65	0.47
Beta-blocker	18	69	0.24
Aldosterone antagonist	14	52	0.26

---

PT-INR, international ratio of prothrombin time; LVAD, left ventricular assist device; ACEI, angiotensin-converting enzyme inhibitor; ARB, angiotensin receptor blocker. \*p <0.05 by unpaired t-test or Mann-Whitney U test

**Supplementary Table 2. Comparison of baseline characteristics between background-matched groups**

	<b>Omega-3 (+)</b> (N = 27)	<b>Omega-3 (-)</b> (N = 54)	<b>P value</b>
<b><i>Demographics</i></b>			
Age, years	49 (42, 59)	48 (45, 58)	0.83
Body mass index	32.4 (28.1, 35.7)	32.3 (28.0, 37.5)	0.58
Male	23 (85%)	42 (78%)	0.32
LVAD duration before the enrollment	24 (4, 68)	21 (14, 28)	0.07
Destination therapy	24 (89%)	37 (69%)	0.14
Device			
Axial LVAD	15 (56%)	38 (70%)	0.14
Centrifugal LVAD	12 (44%)	16 (30%)	0.14
Temporary RVAD use	2 (7%)	3 (6%)	0.74
<b><i>Comorbidity</i></b>			
Ischemic etiology	7 (26%)	10 (19%)	0.31
Hypertension	16 (59%)	36 (67%)	0.34
Diabetes mellitus	7 (26%)	19 (35%)	0.28
Atrial fibrillation	10 (37%)	15 (28%)	0.27
History of stroke	3 (11%)	13 (24%)	0.14
History of ventricular tachyarrhythmia	10 (37%)	19 (35%)	0.53
Hemoglobin, g/dL	9.78 ± 1.41	9.60 ± 1.31	0.66
<b><i>At enrollment time</i></b>			

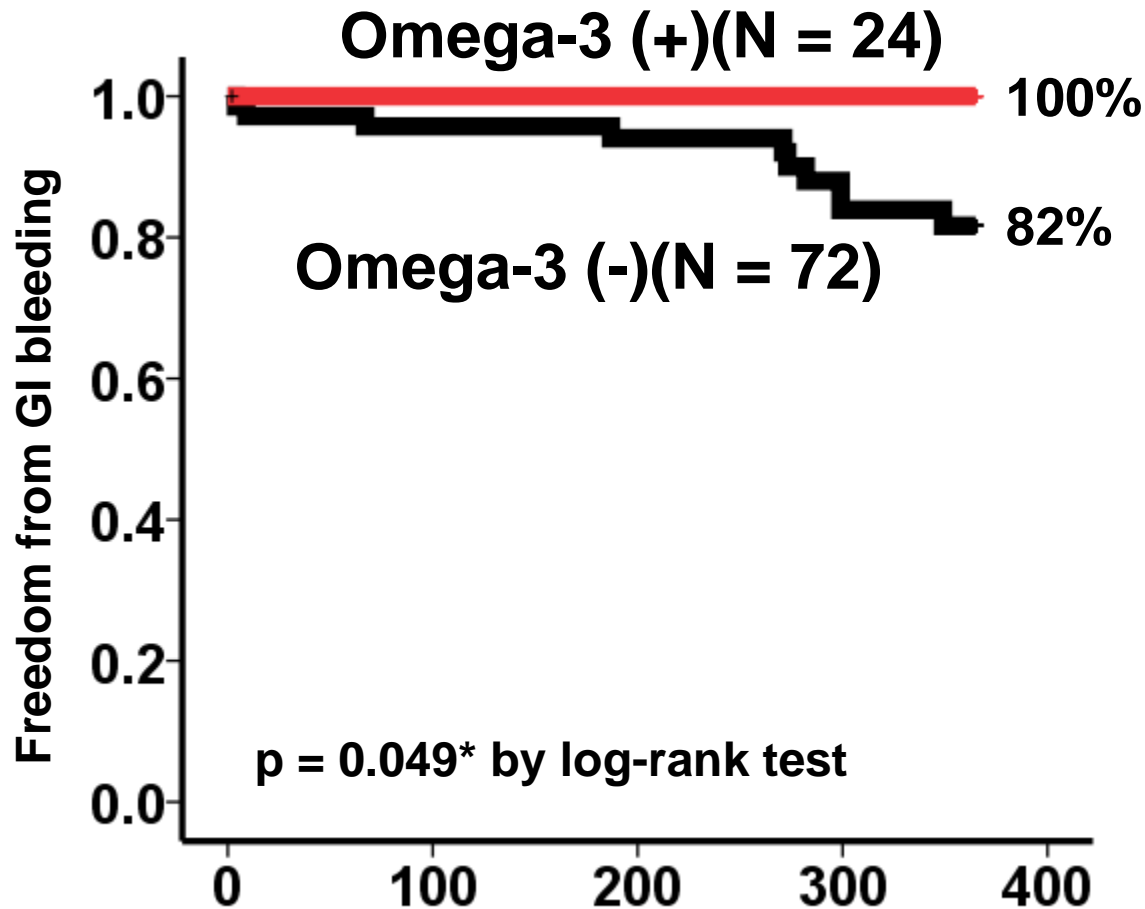
PT-INR	2.1 (1.8, 2.4)	2.4 (1.9, 2.7)	0.07
Aspirin dose, mg	81 (81, 162)	81 (81, 162)	0.94
LVAD speed, rpm			
Axial LVAD	9014.3 ± 388.0	9186.5 ± 318.1	0.14
Centrifugal LVAD	2625.0 ± 149.1	2701.5 ± 141.1	0.38
ACEI or ARB	15 (56%)	22 (41%)	0.15
Beta-blocker	13 (48%)	21 (39%)	0.29
Aldosterone antagonist	14 (52%)	22 (41%)	0.24

---

Abbreviations as in Table 1 and 2.

Propensity scores of age, gender, device type, and aspirin dose at discharge were matched between two groups.

# A. Age <60 years old

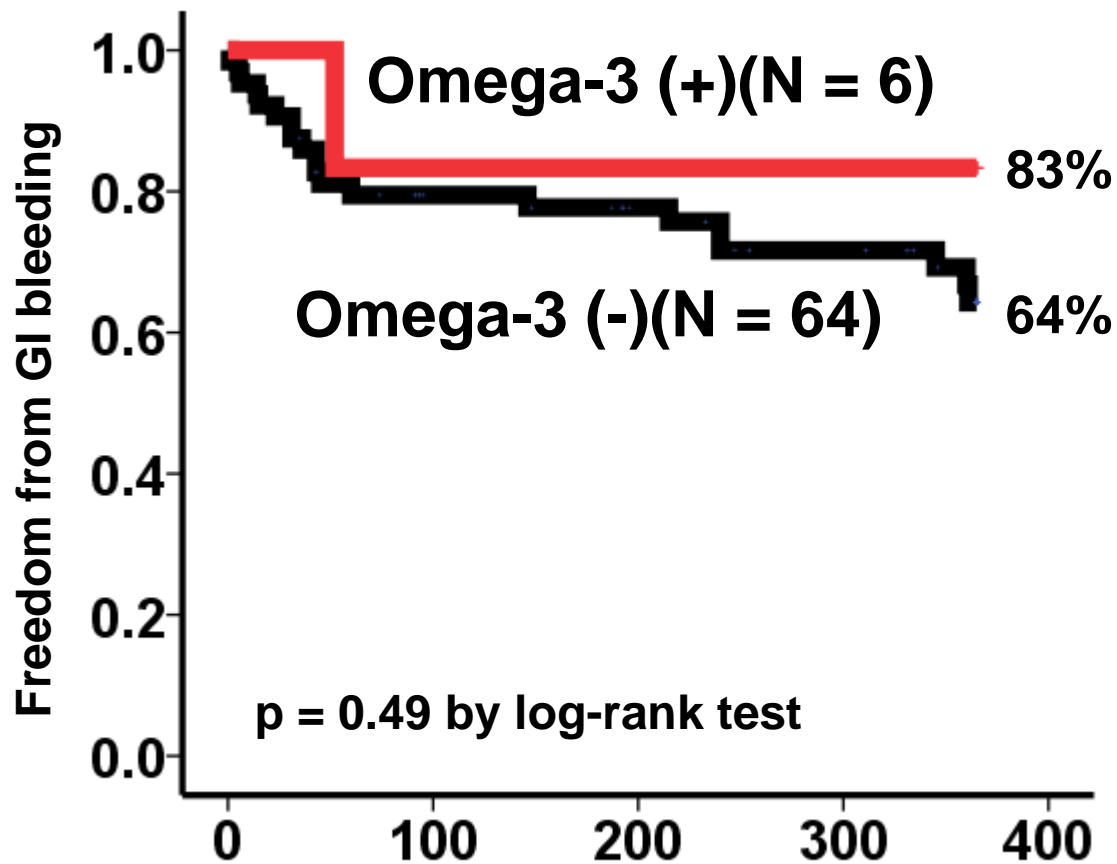


Number at risk

	0	100	200	300	400
Omega-3 (+):	24	23	22	16	14
Omega-3 (-):	72	65	52	40	34

Supplementary Figure 1

## B. Age $\geq 60$ years old



Number at risk

	0	100	200	300	400
Omega-3 (+):	6	4	4	3	2
Omega-3 (-):	64	45	39	33	25

Supplementary Figure 1

## **FIGURE LEGEND OF SUPPLEMENTARY FIGURES**

**Supplementary Figure 1. Comparison of GI bleeding-free rate among the sub-group of age <60 years old (A) and age  $\geq$ 60 years old (B)**

\*p <0.05 by log-rank test.