

Figure S27. LC/MS data for 4{27}.

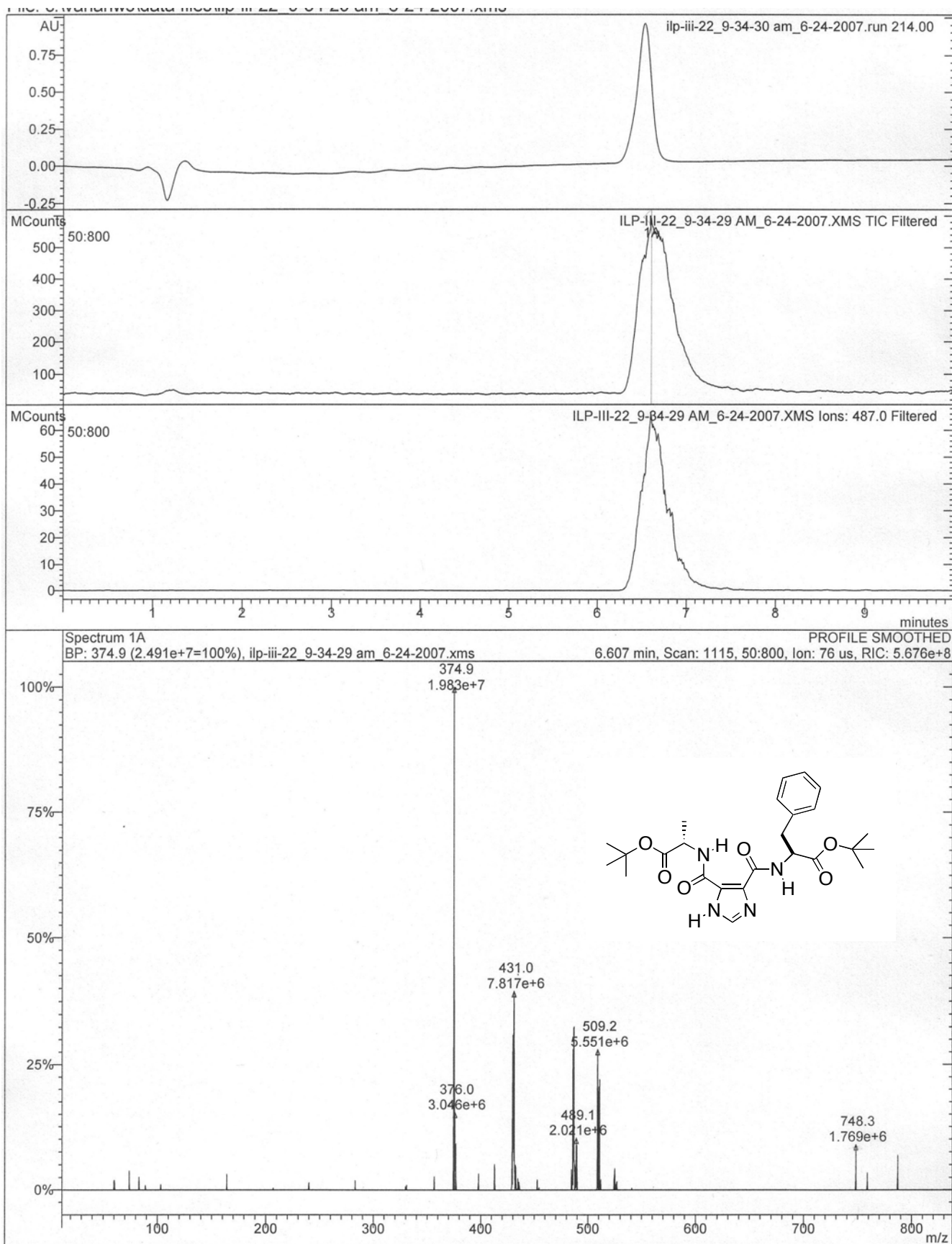


Figure S28. LC/MS data for 4{28}.

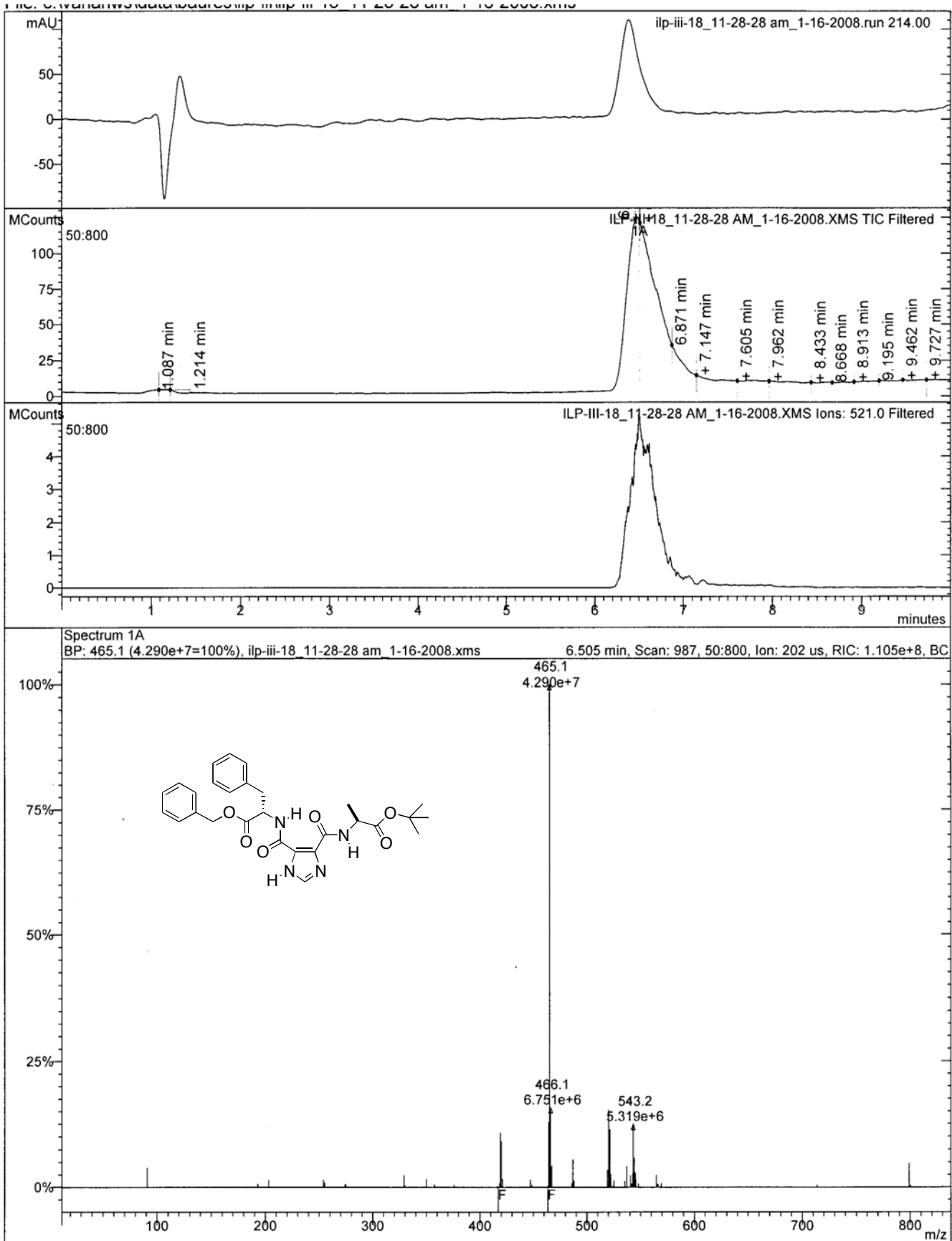


Figure S29. LC/MS data for 4{29}.

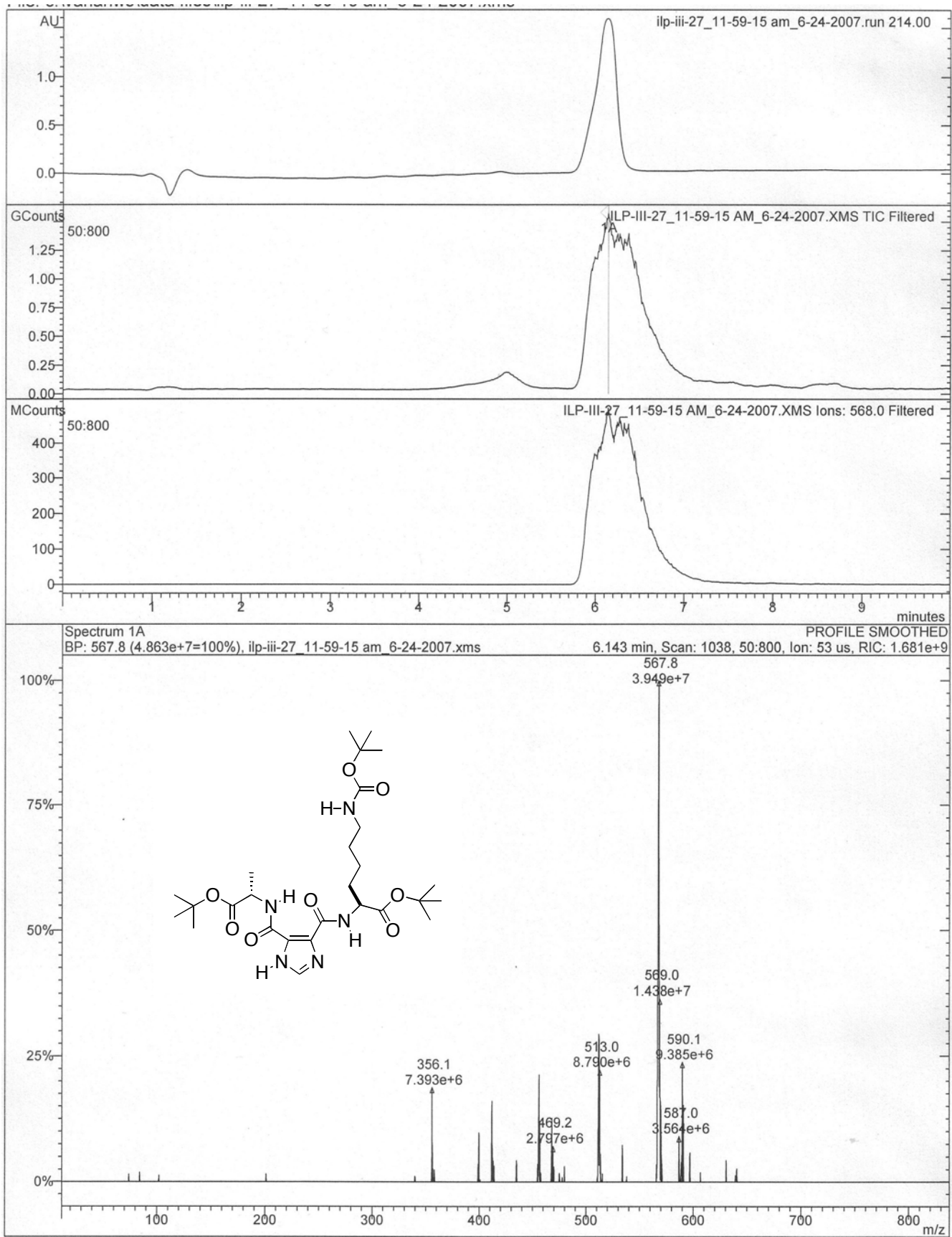


Figure S30. LC/MS data for 4{30}.

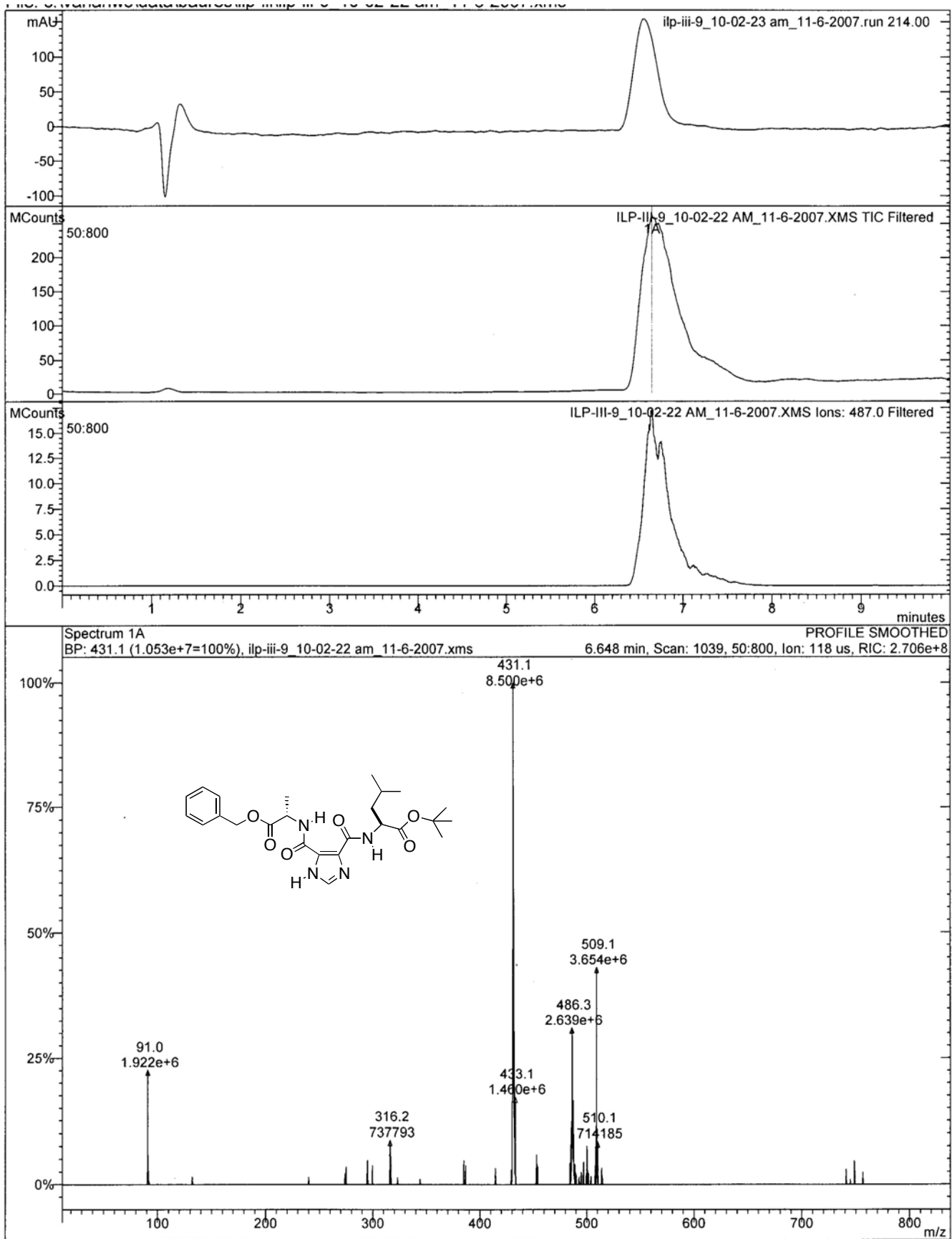


Figure S31. LC/MS data for 4{31}.

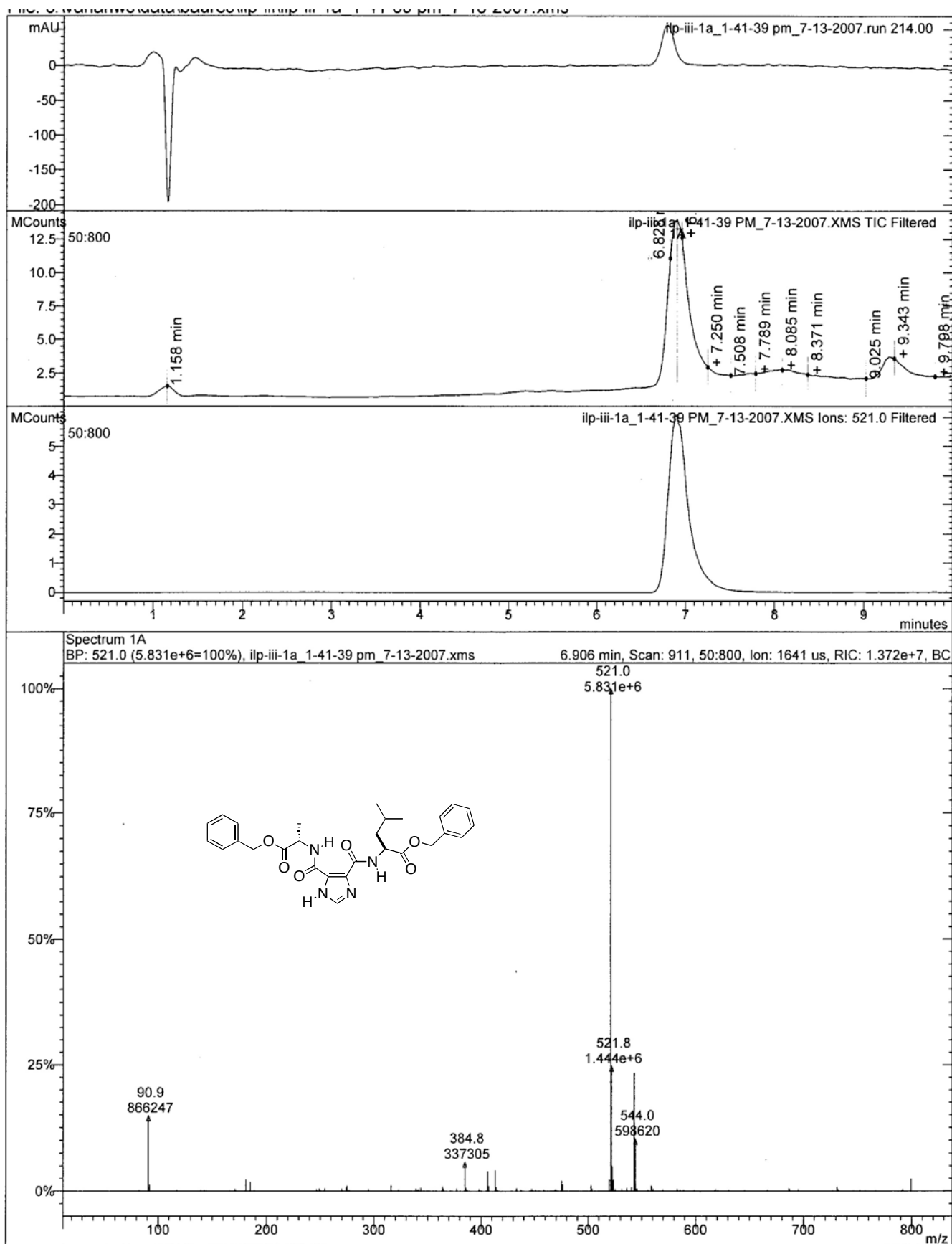


Figure S32. LC/MS data for 4{32}.

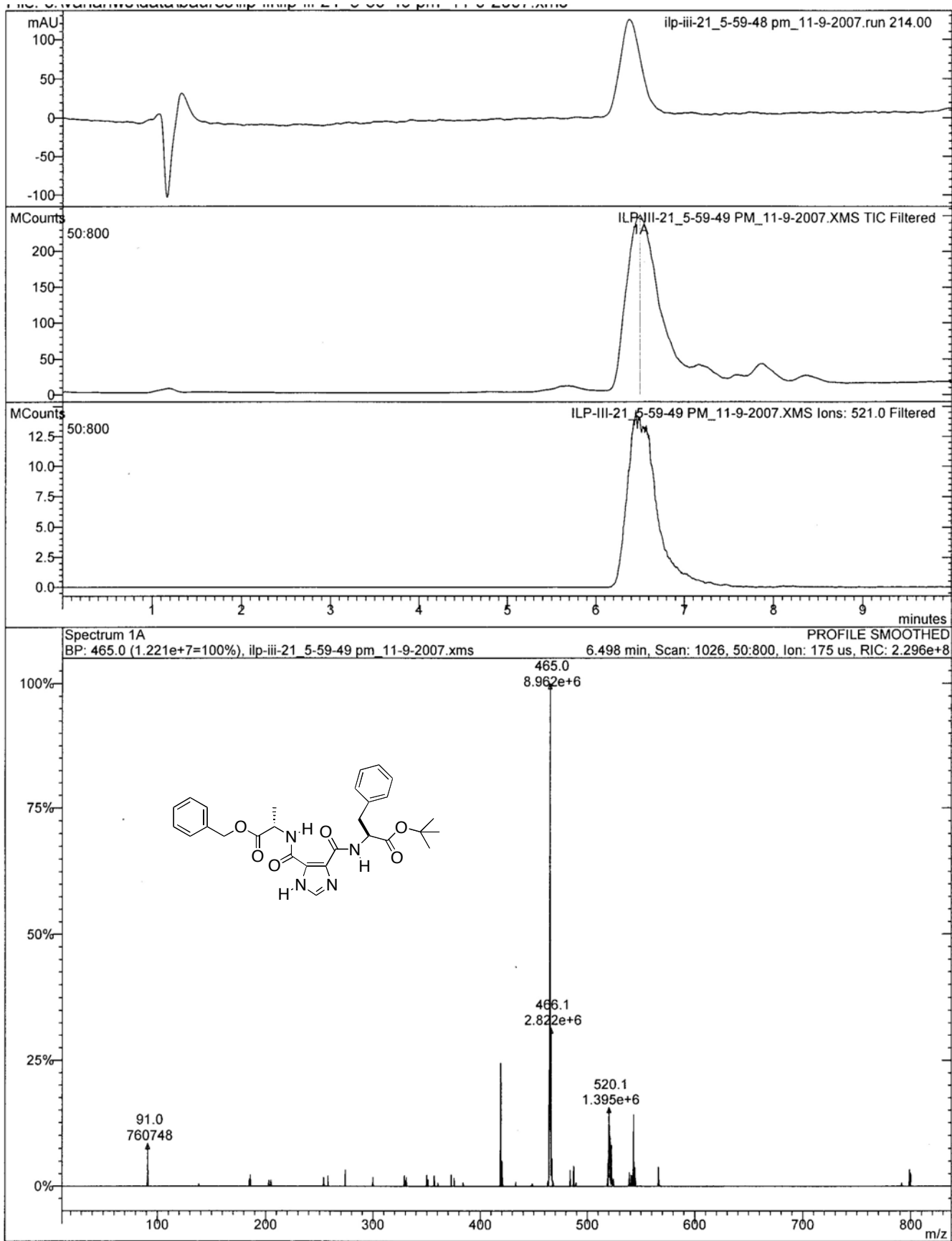


Figure S33. LC/MS data for 4{33}.

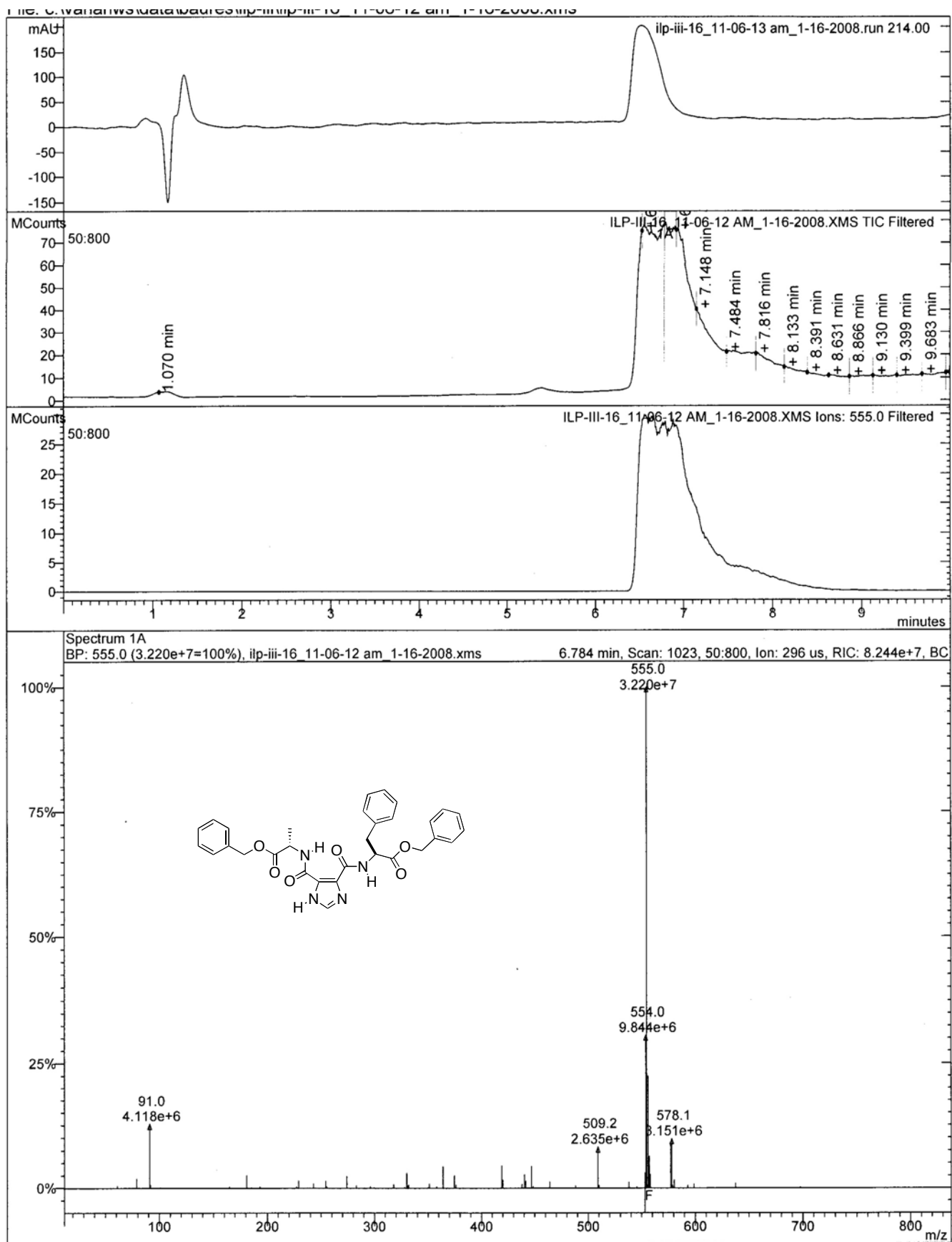


Figure S34. LC/MS data for 4{34}.



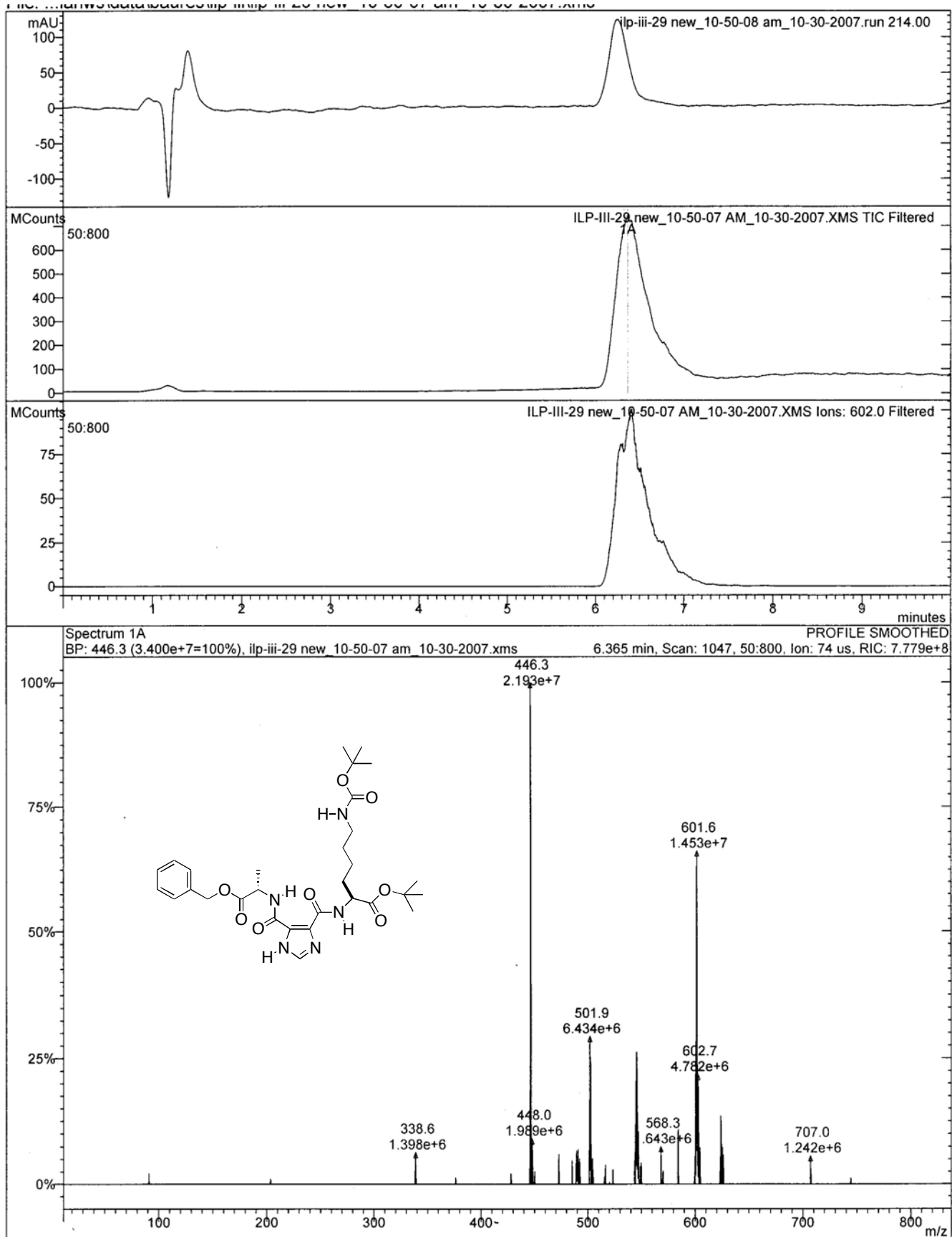


Figure S35. LC/MS data for 4{35}.

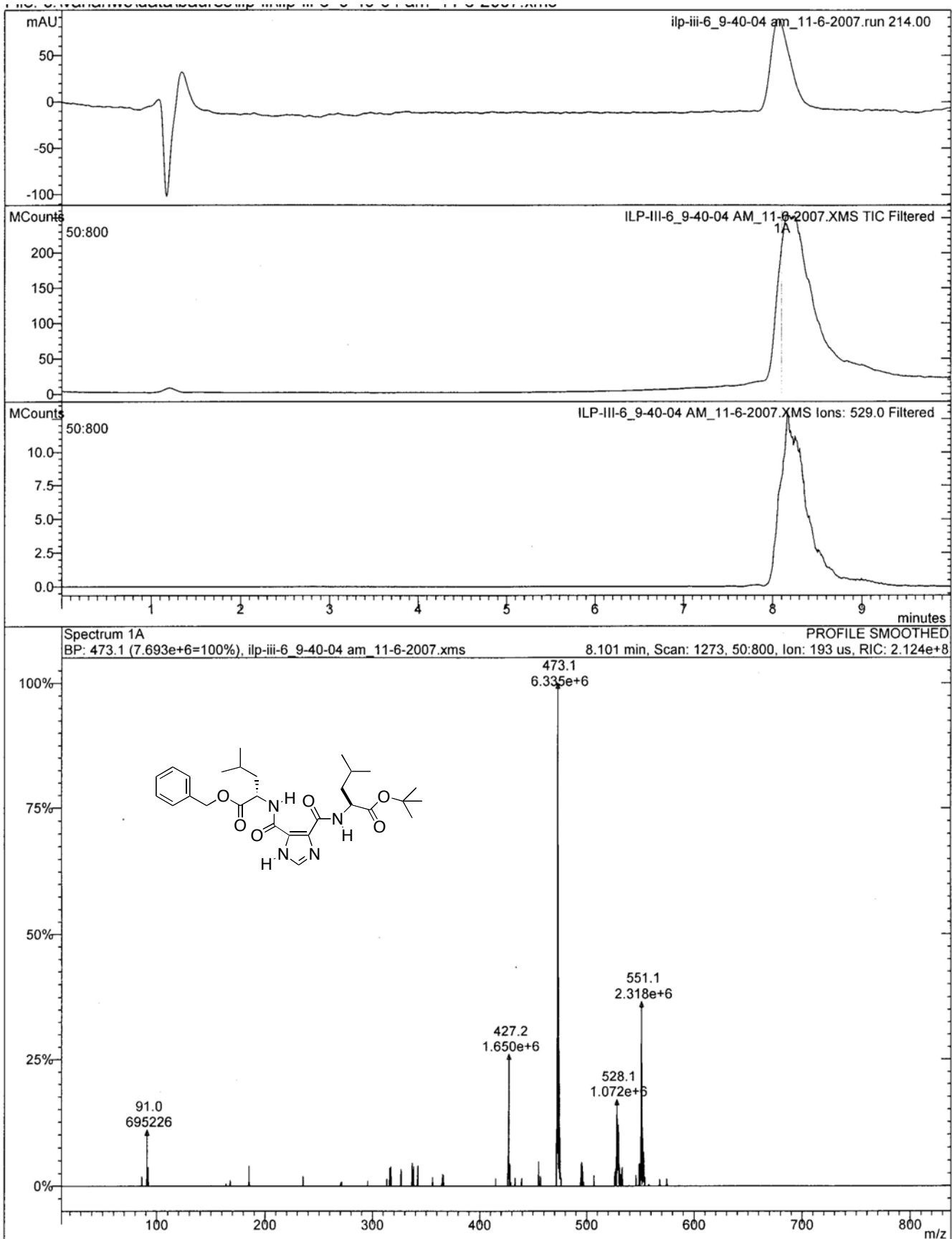


Figure S36. LC/MS data for 4{36}.

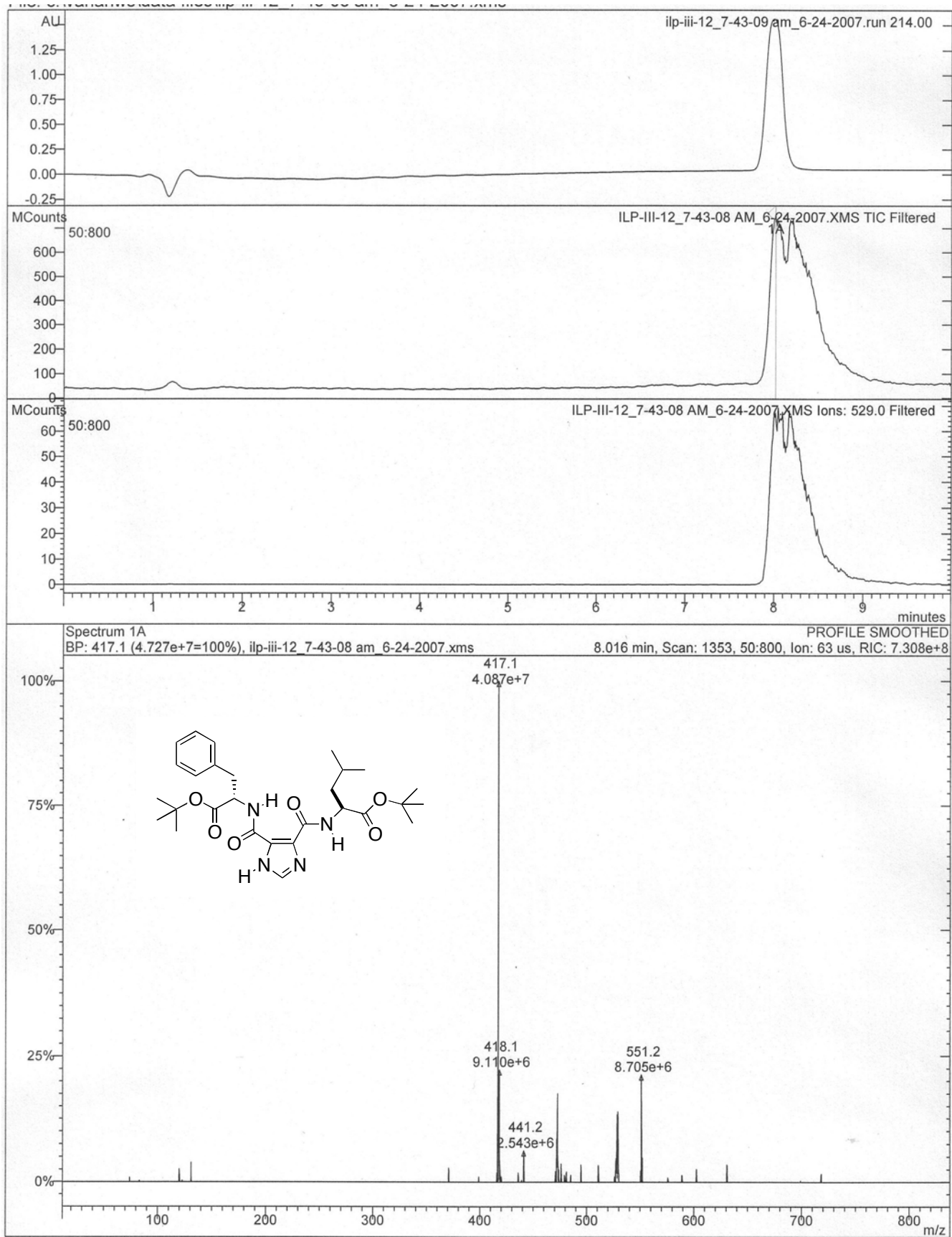


Figure S37. LC/MS data for 4{37}.

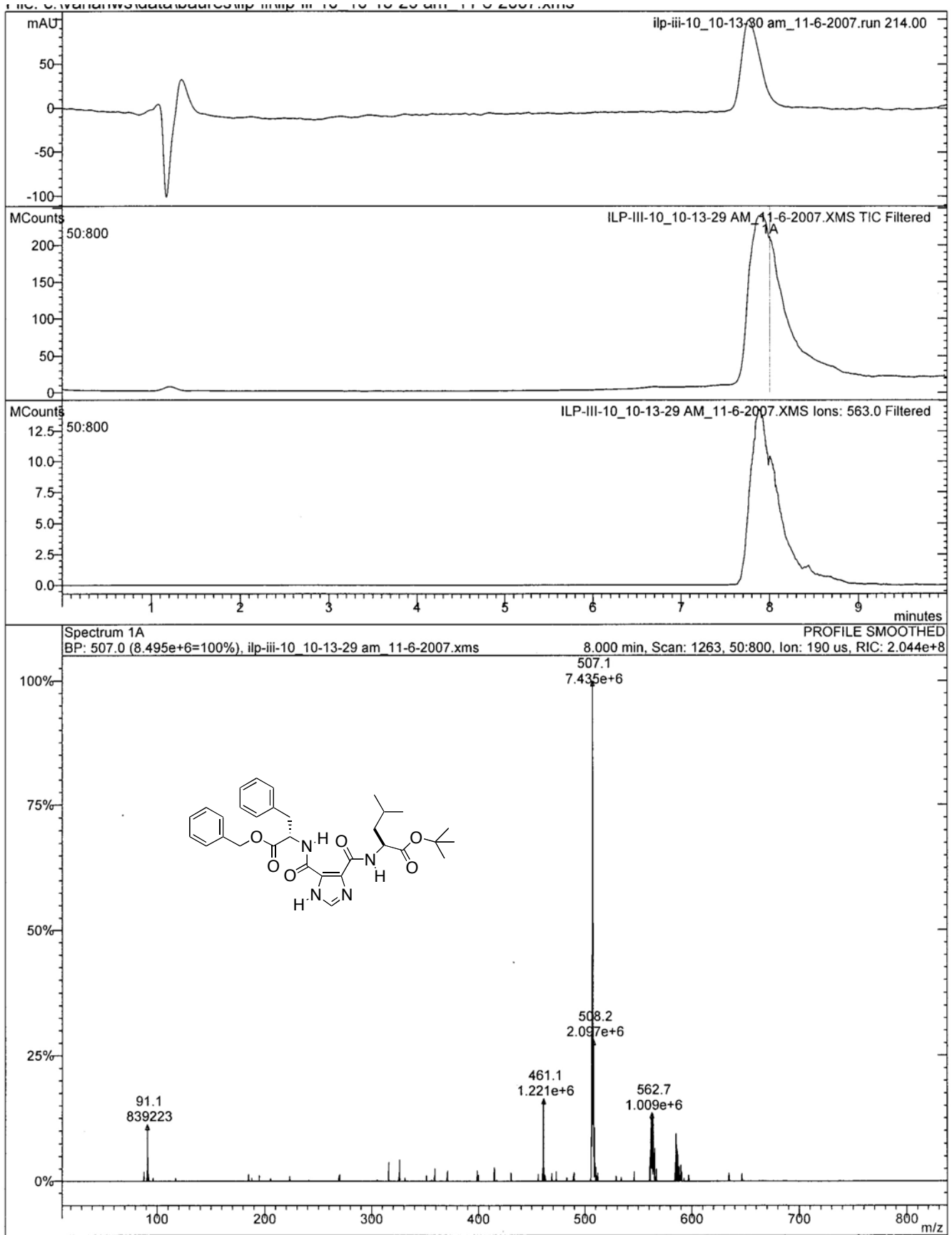


Figure S38. LC/MS data for 4{38}.

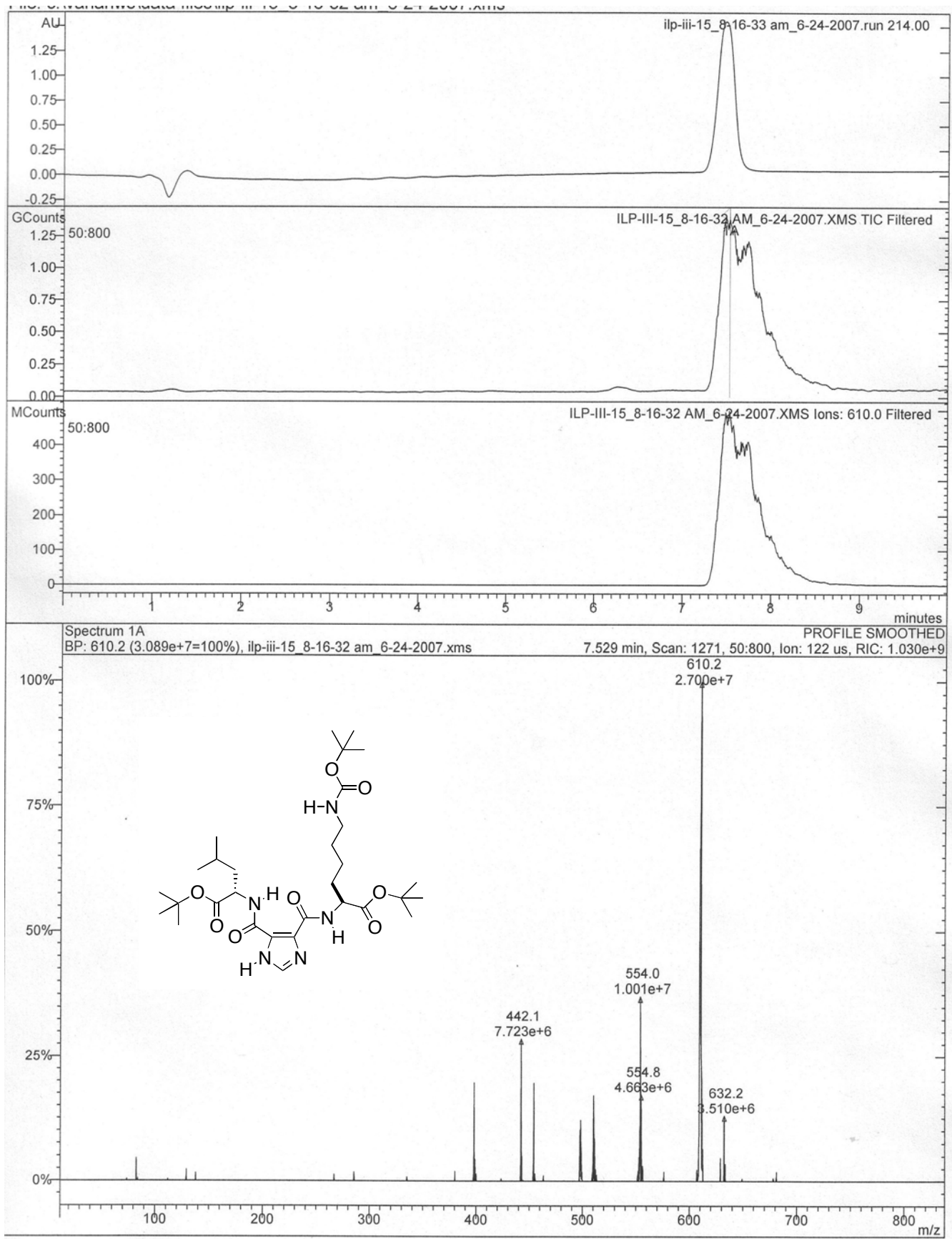


Figure S39. LC/MS data for 4{39}.

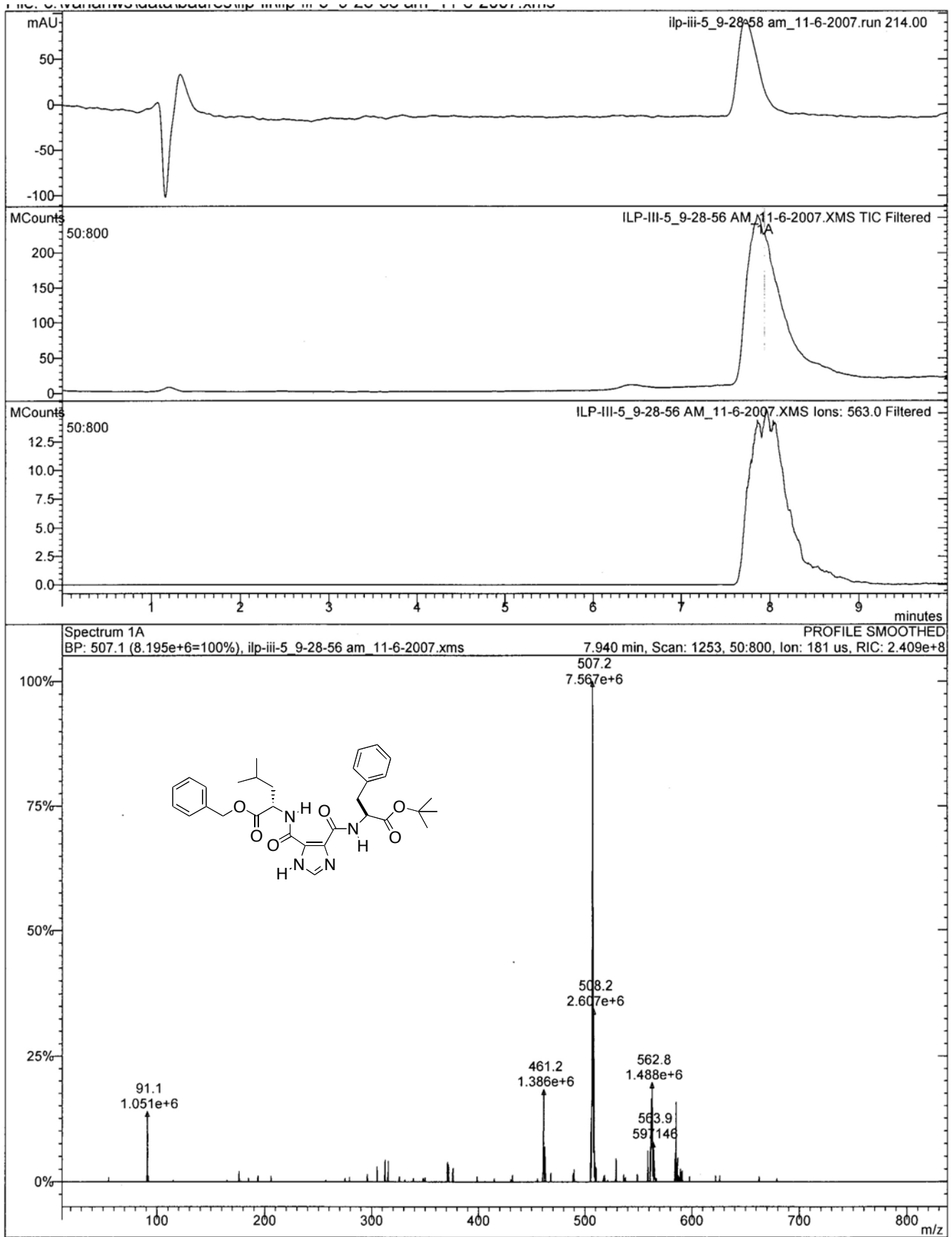


Figure S40. LC/MS data for 4{40}.

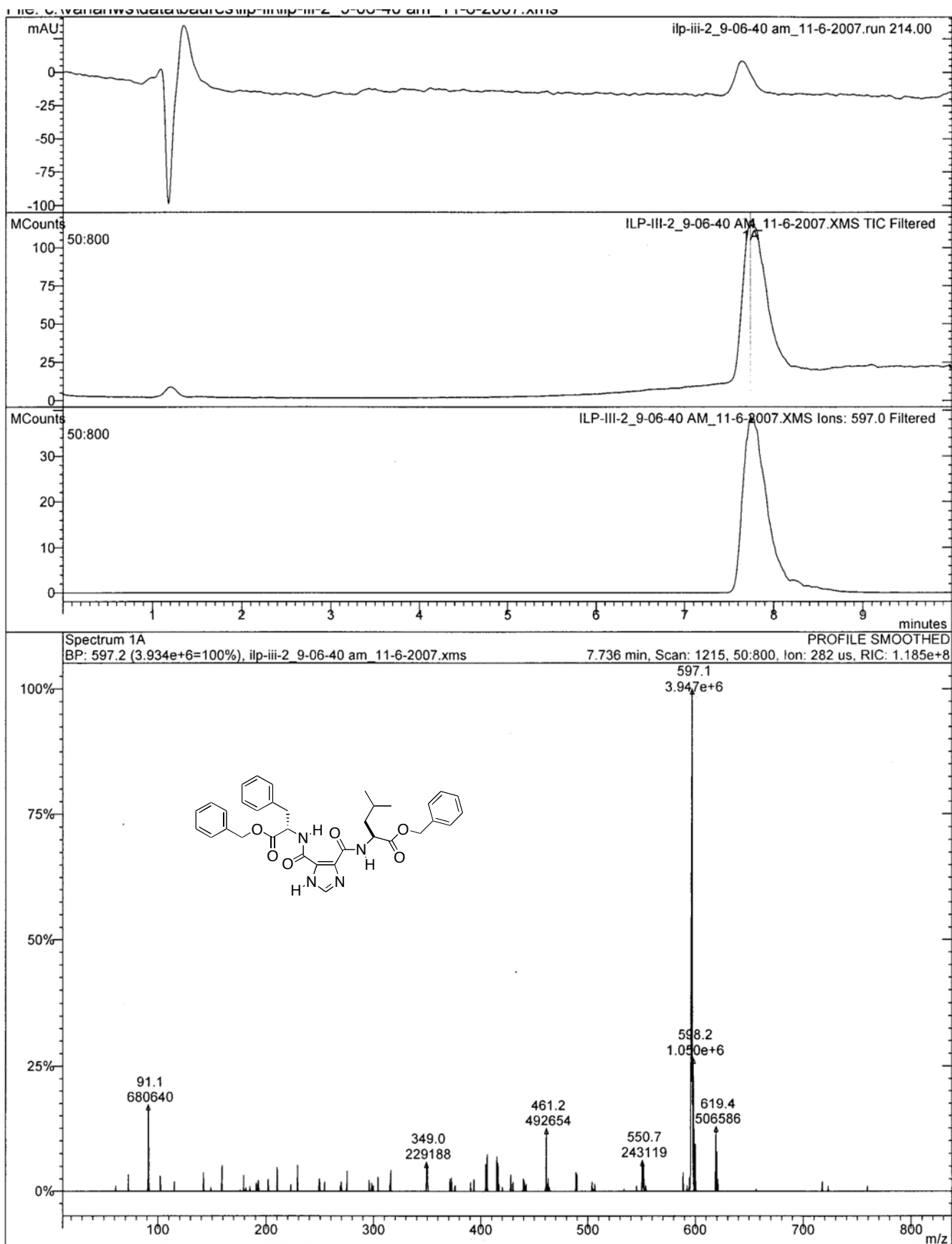


Figure S41. LC/MS data for 4{41}.

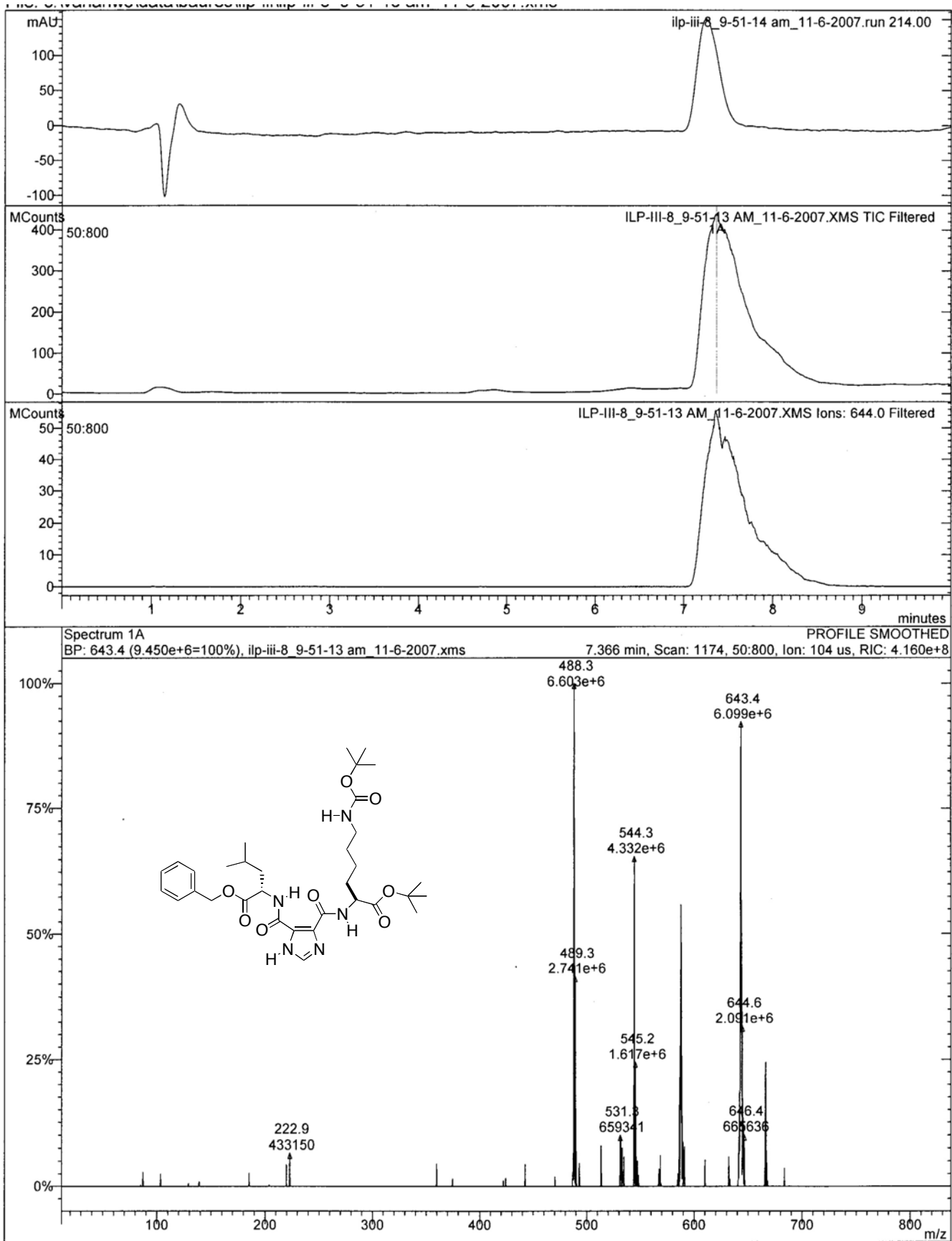


Figure S42. LC/MS data for 4{42}.



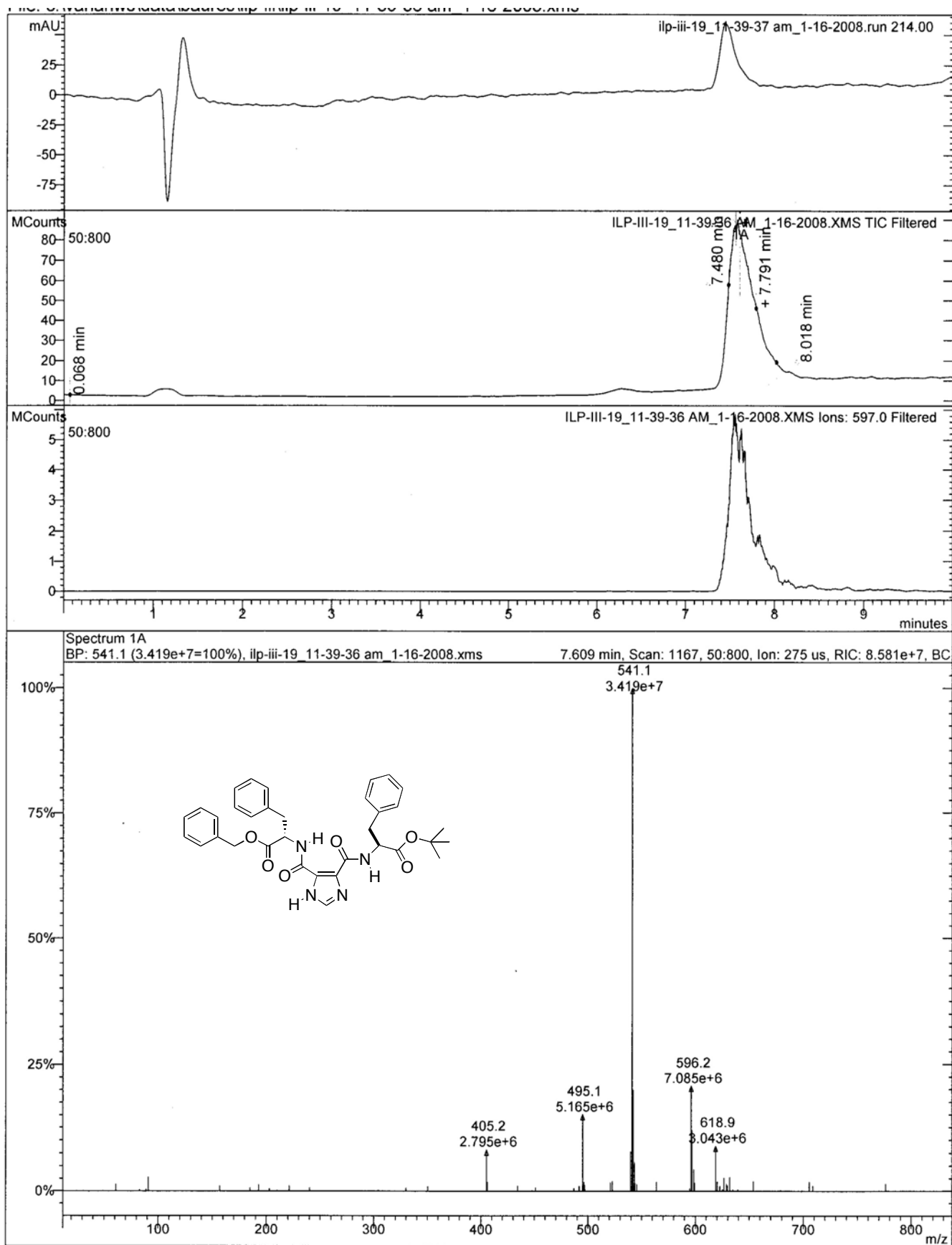


Figure S43. LC/MS data for 4{43}.

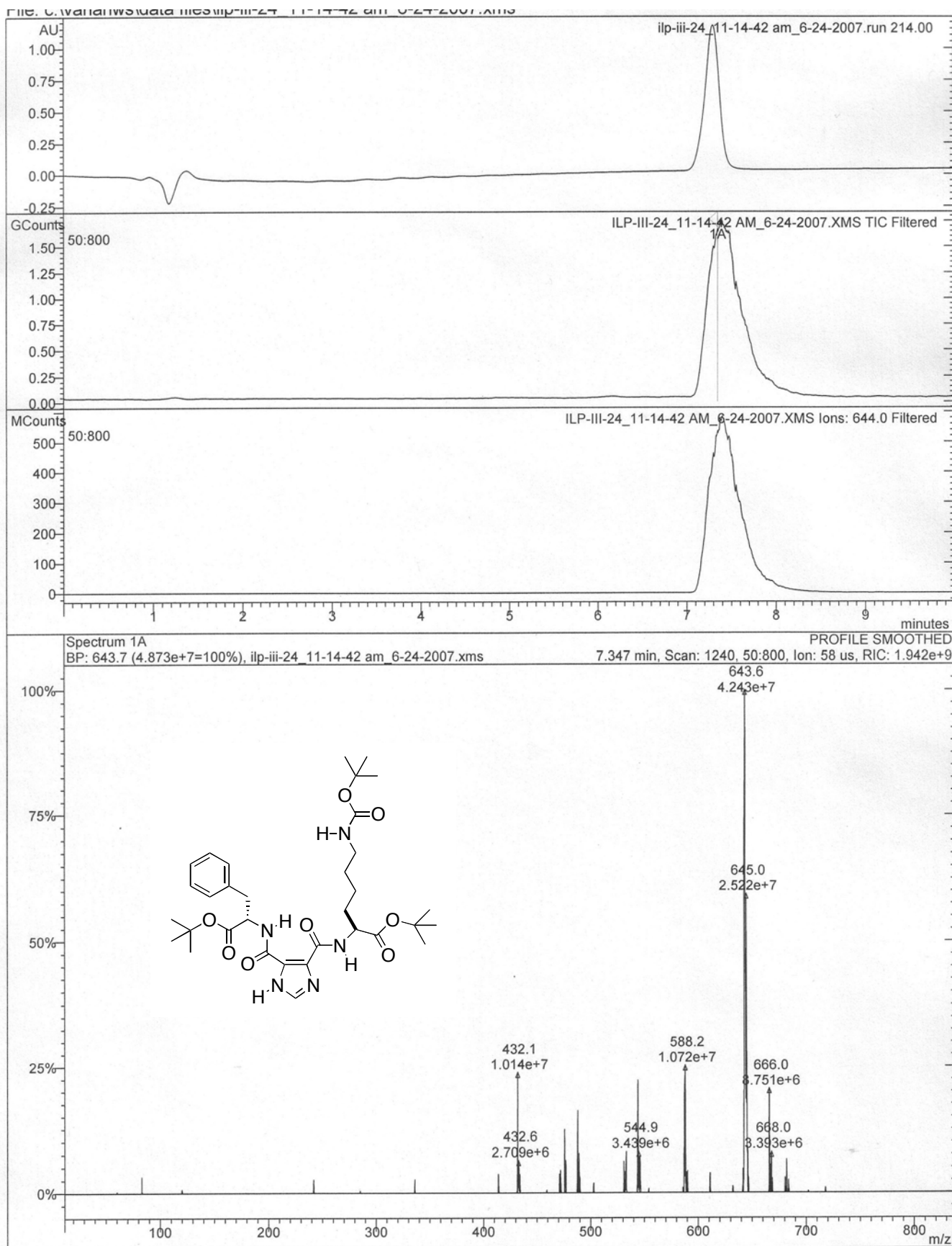


Figure S44. LC/MS data for 4{44}.

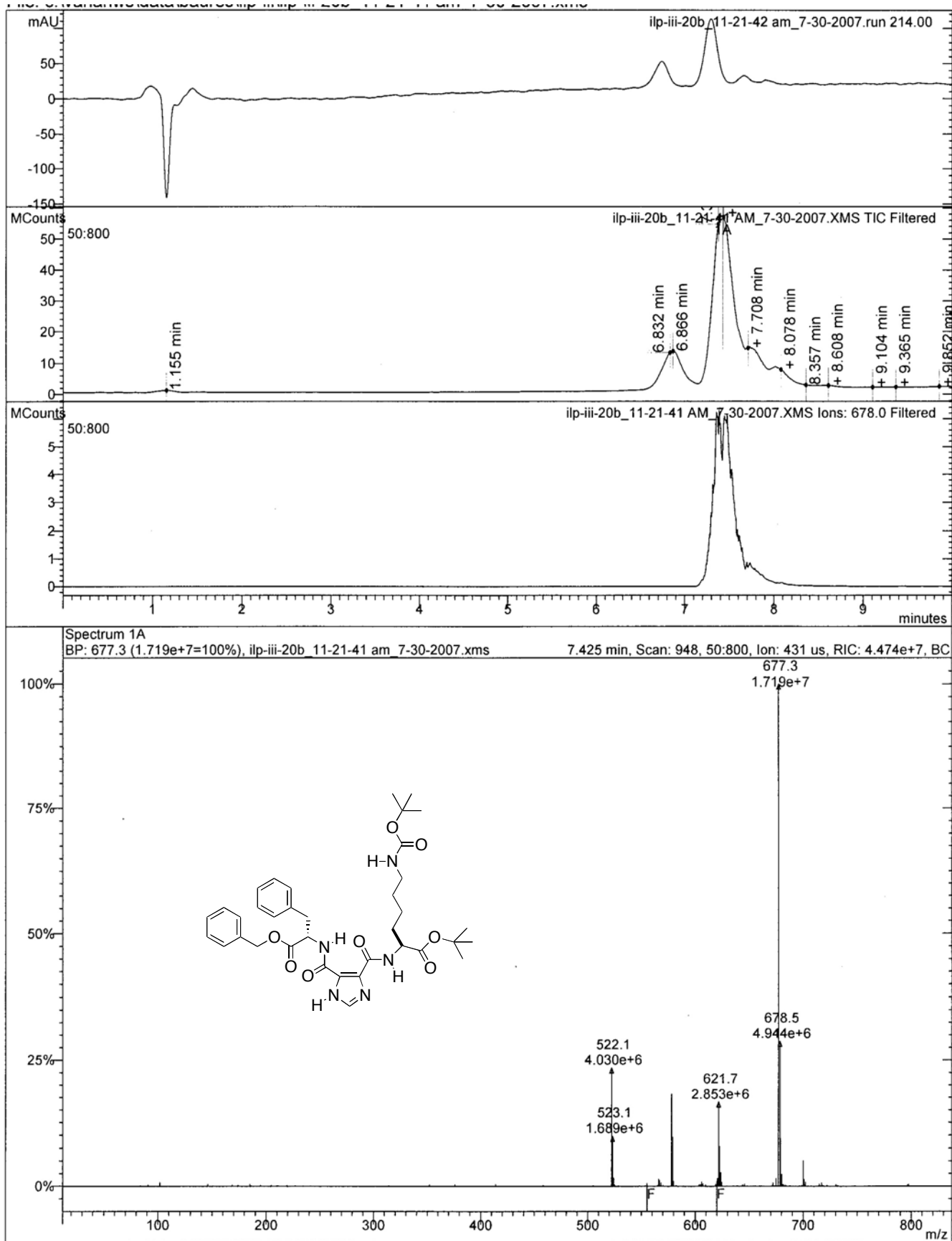


Figure S45. LC/MS data for 4{45}.

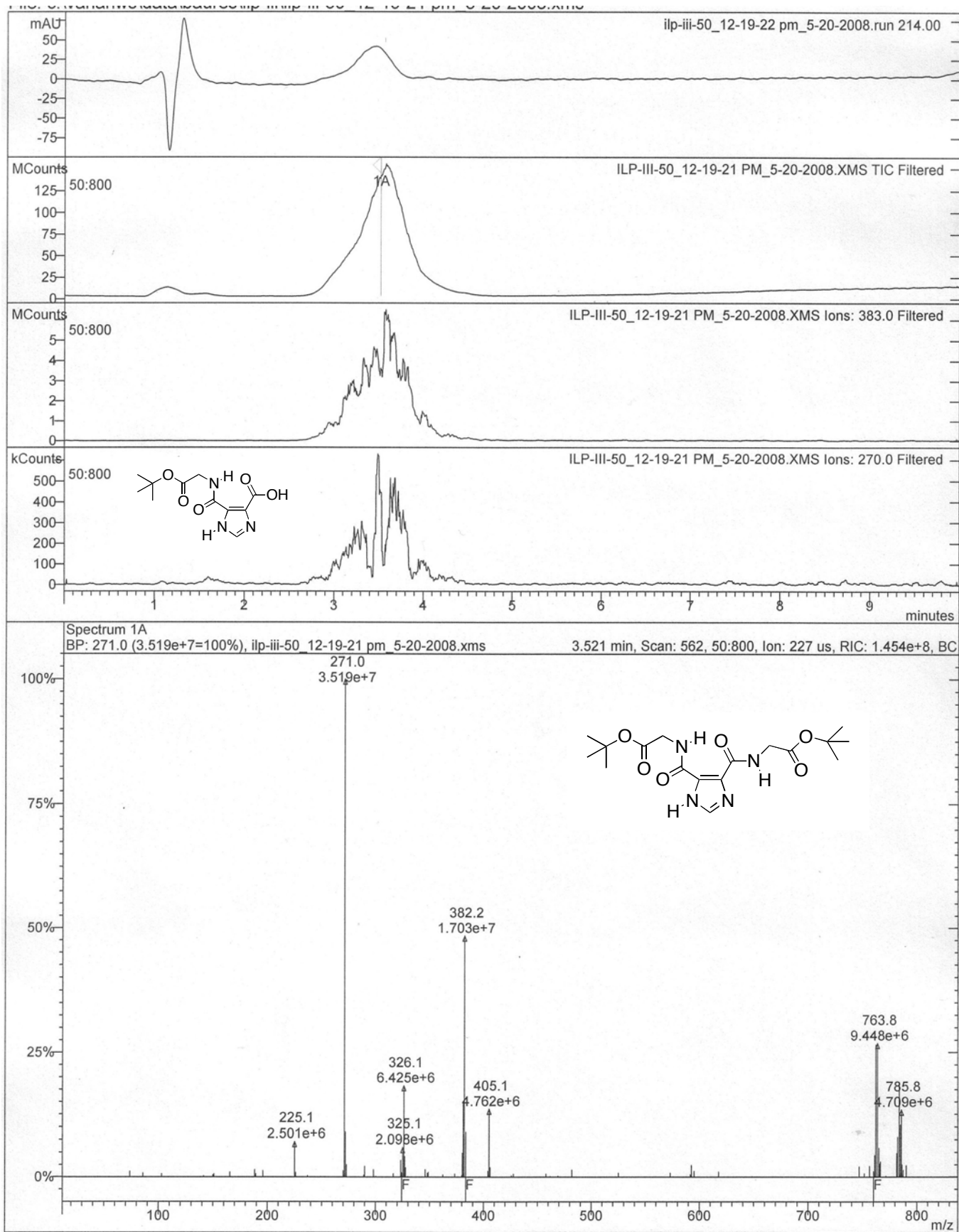


Figure S46. LC/MS data for the crude reaction to yield 4{1}.