

Supplementary Information for:

Iron removal enhances vitamin C-induced apoptosis and growth inhibition of K-562 leukemic cells

Mitsuyo Tsuma-Kaneko^{1,2}, Masakazu Sawanobori², Shohei Kawakami^{1,2}, Tomoko Uno¹, Yoshihiko Nakamura¹, Makoto Onizuka^{1,2}, Kiyoshi Ando^{1,2}, Hiroshi Kawada^{1,2}

¹Research Center for Cancer Stem Cell, ²Division of Hematology/Oncology, Department of Medicine, Tokai University School of Medicine, 143 Shimokasuya, Isehara, Kanagawa 259-1143, Japan.

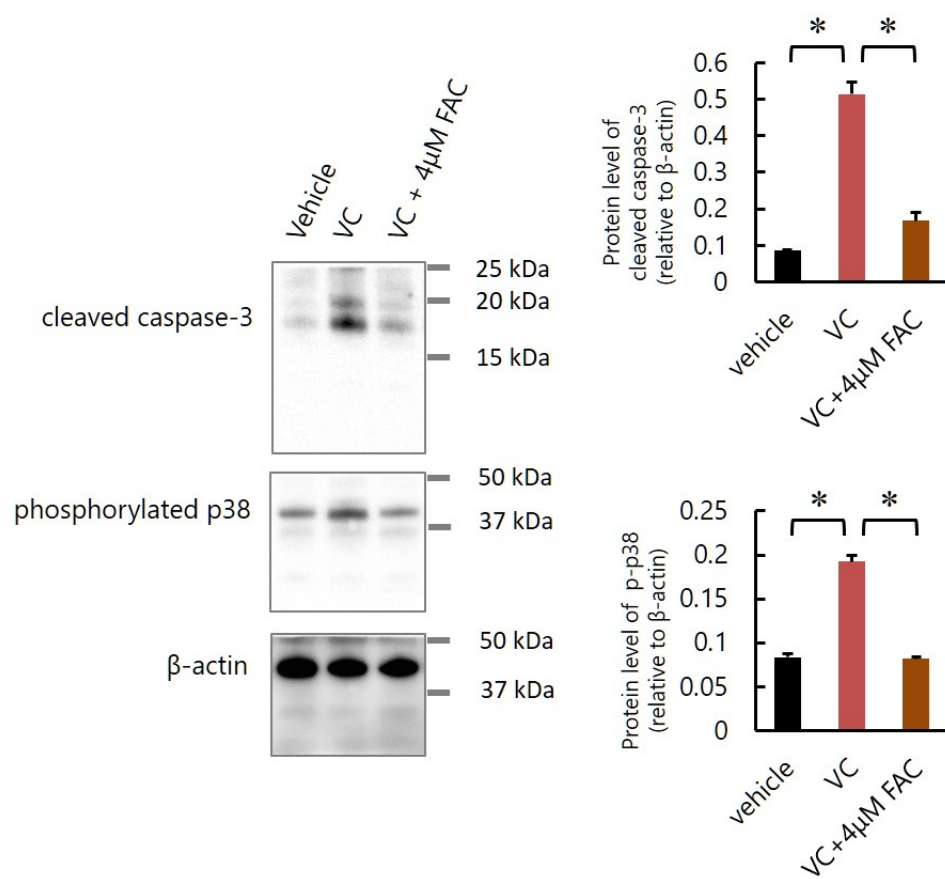
Corresponding author: Hiroshi Kawada, M.D., Ph.D.

Division of Hematology/Oncology, Department of Medicine, Tokai University School of Medicine, 143 Shimokasuya, Isehara, Kanagawa 259-1143, Japan.

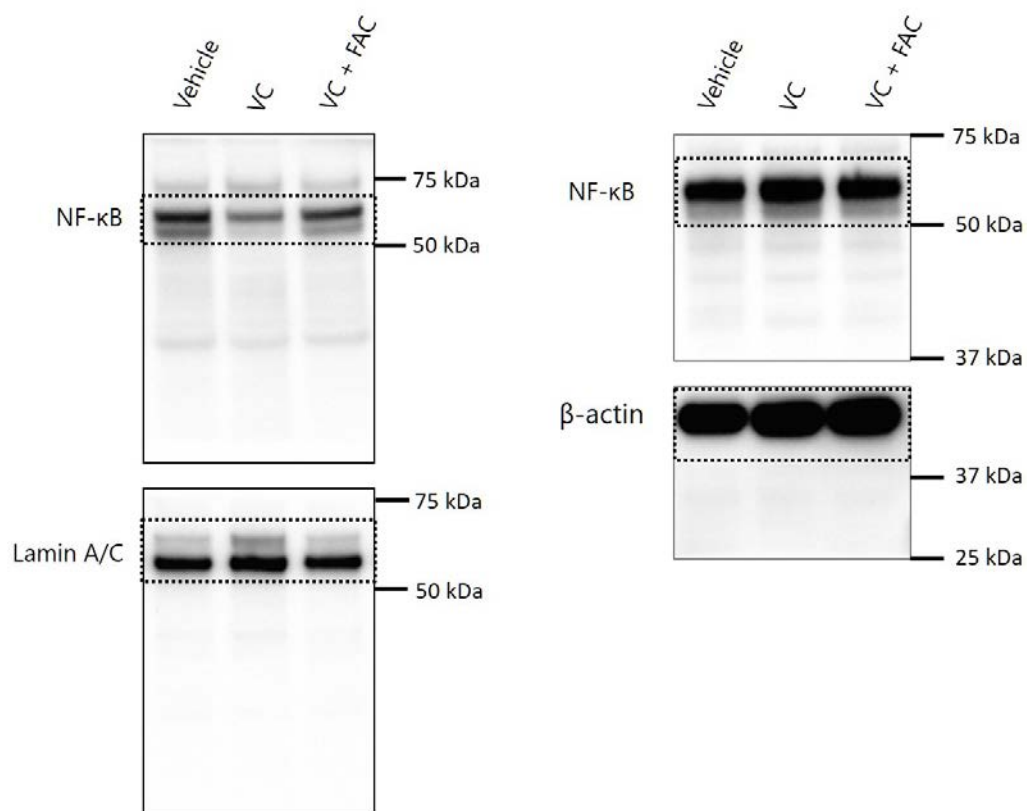
Phone: +81-463-93-1121 ext. 5059, e-mail: kawada@tokai.ac.jp

Supplementary Figure 1. Western blot analysis of cleaved caspase-3 and phosphorylated p38.

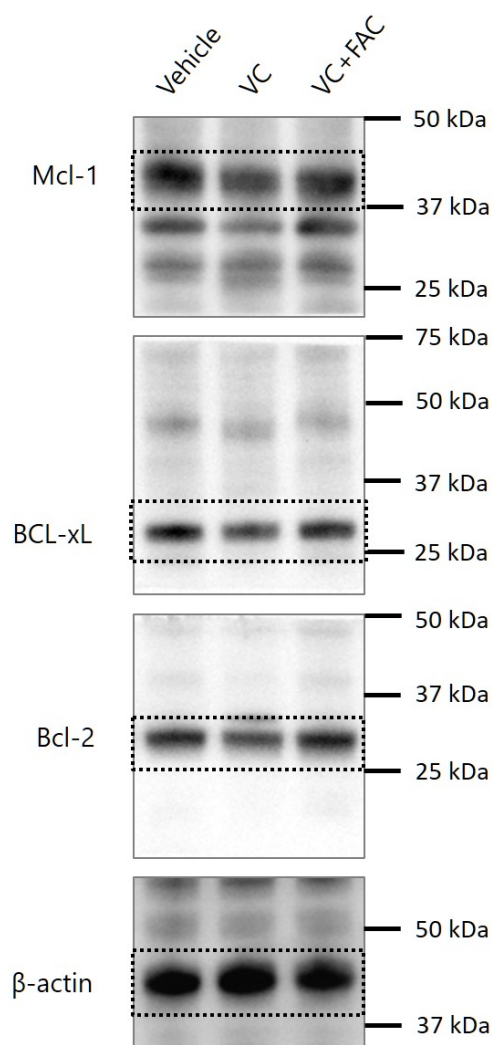
*P<0.0001. The values represent the mean \pm SD values of quadruplicate samples.



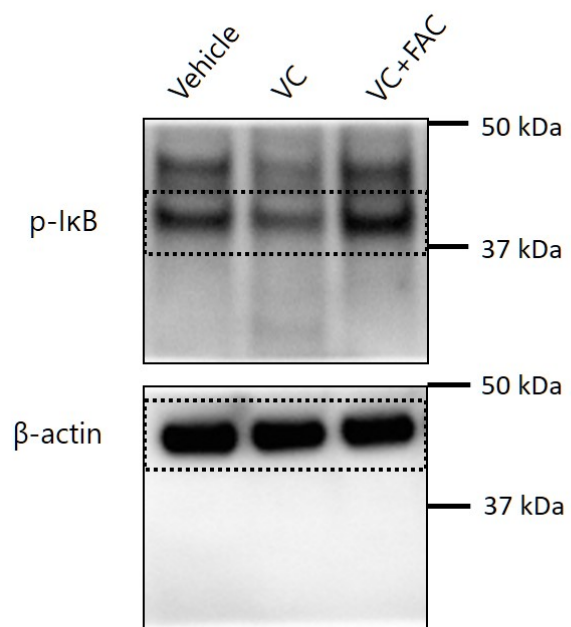
Supplementary Figure 2. Full-length pictures of the blots presented in the main figure 2A.



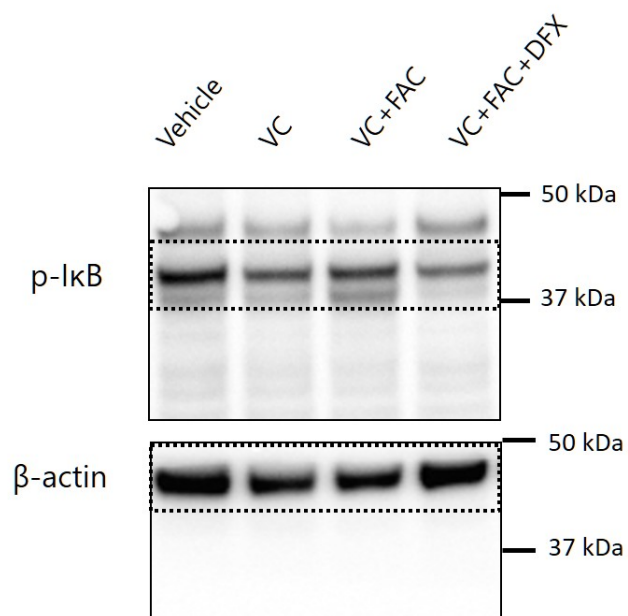
Supplementary Figure 3. Full-length pictures of the blots presented in the main figure 2C.



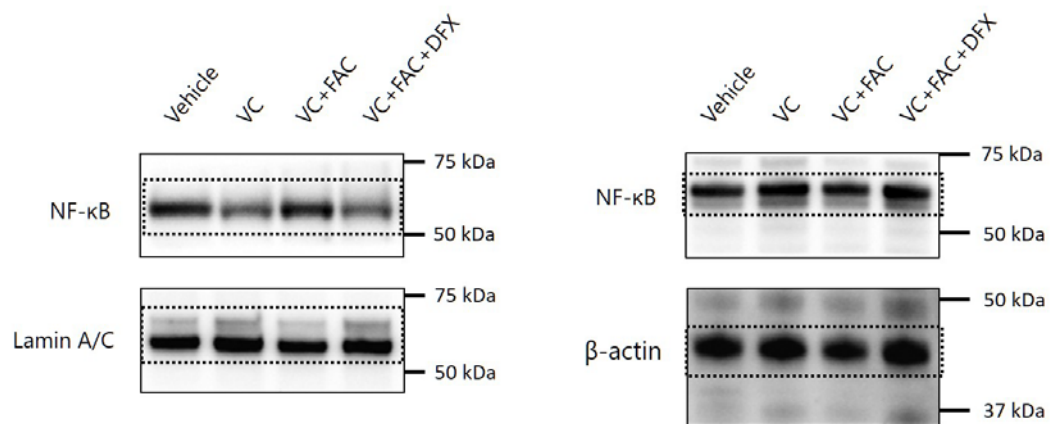
Supplementary Figure 4. Full-length pictures of the blots presented in the main figure 2D.



Supplementary Figure 5. Full-length pictures of the blots presented in the main figure 5A.



Supplementary Figure 6. Full-length pictures of the blots presented in the main figure 5B.



Supplementary Figure 7. Full-length pictures of the blots presented in the main figure 5D.

