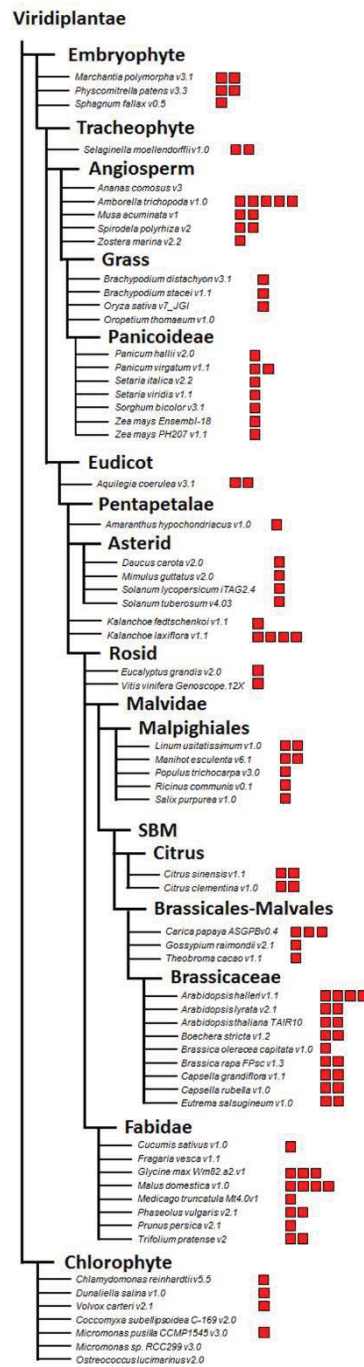


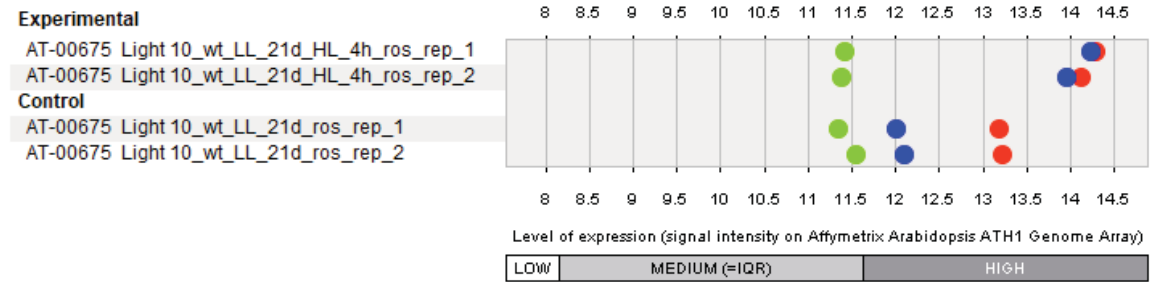
SUPPLEMENTAL FIGURES



Supplemental Figure 1: Presence of the *PSAT* genes in the clade *Viridiplantae*

The presence of the *PSAT* genes in the clade *Viridiplantae* is shown. Red boxes indicate the number of *PSAT* isoforms.

Detailed view of selected perturbations (absolute expression levels)

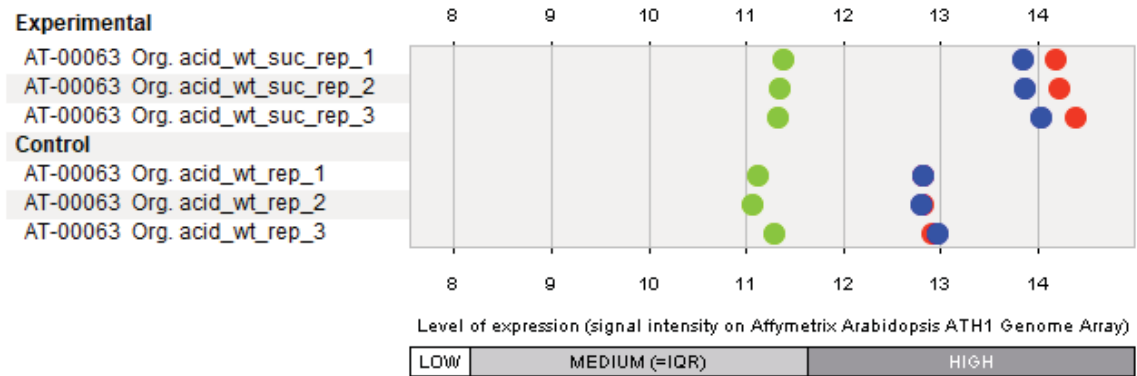


created with GENEVESTIGATOR

Supplemental Figure 2: High-light-induced expression of PPSB genes

Public available gene expression data are shown (<https://genevestigator.com/gv/>). The expression of *PGDH1* (red), *PSAT1* (blue) and *PSP* (green) is shown in shoot tissue of wild type plants grown for three weeks on soil under 16h low-light ($30 \mu\text{mol}_{(\text{photons})} \text{m}^{-2} \text{s}^{-1}$) at 22°C / 8h dark at 18°C cycles, then exposed to high-light (16h ($300 \mu\text{mol}_{(\text{photons})} \text{m}^{-2} \text{s}^{-1}$) at 22°C / 8h dark at 18°C) for 48h. The plants were shifted to high-light 3.5h after the beginning of the light period.

Detailed view of selected perturbations (absolute expression levels)



created with GENEVESTIGATOR

Supplemental Figure 3: Sucrose-induced expression of PPSB genes

Publicly available gene expression data are shown (<https://genevestigator.com/gv/>). The expression of *PGDH1* (red), *PSATI* (blue) and *PSP* (green) is shown in seedlings of wild type plants grown on agar plates with (100 mM) or without exogenous sucrose for 3 days.