

Supplementary Figure S1.

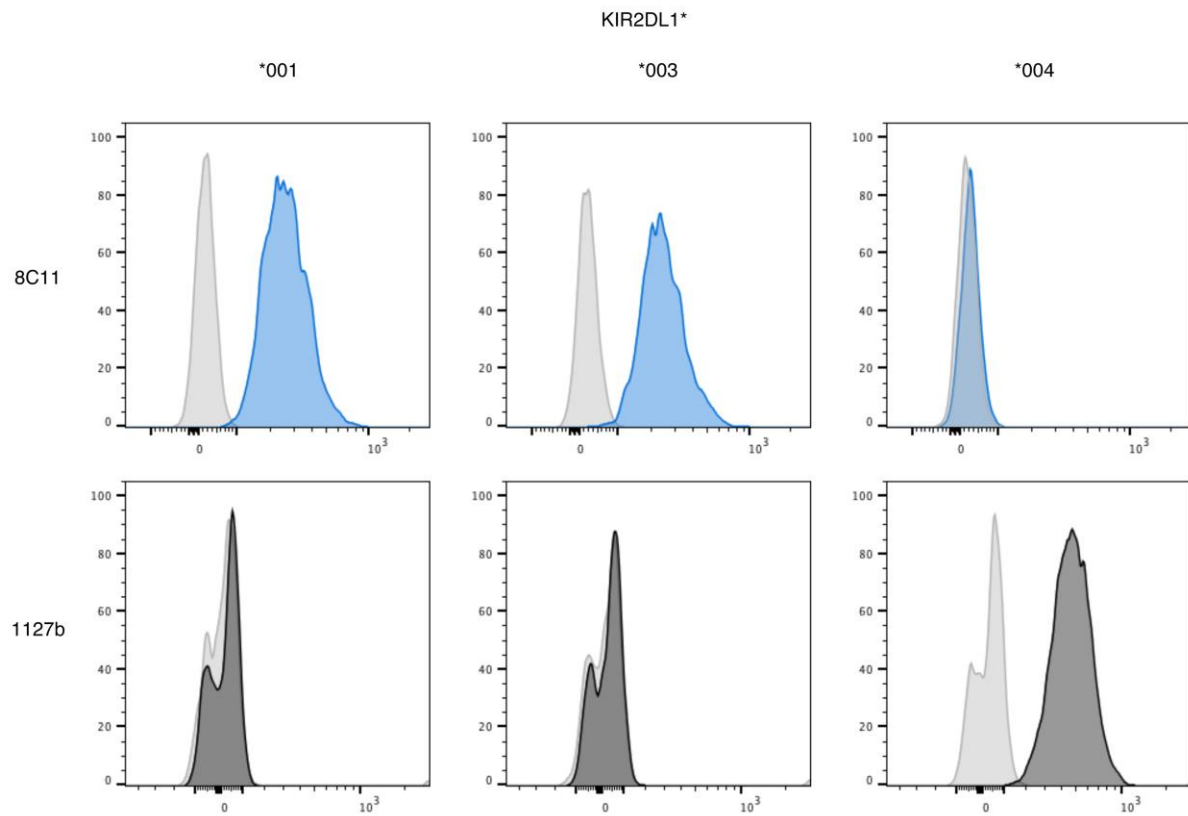


Figure S1. Antibody binding profiles of YTS cells transfected with *KIR2DL1* allotypes

YTS cells transfected with either *KIR2DL1**001, or *003 or *004 were stained with 8C11 and 1127b. The IgG control is shown in grey, 8C11 staining in blue and 1127b staining in black.

Supplementary Figure S2.

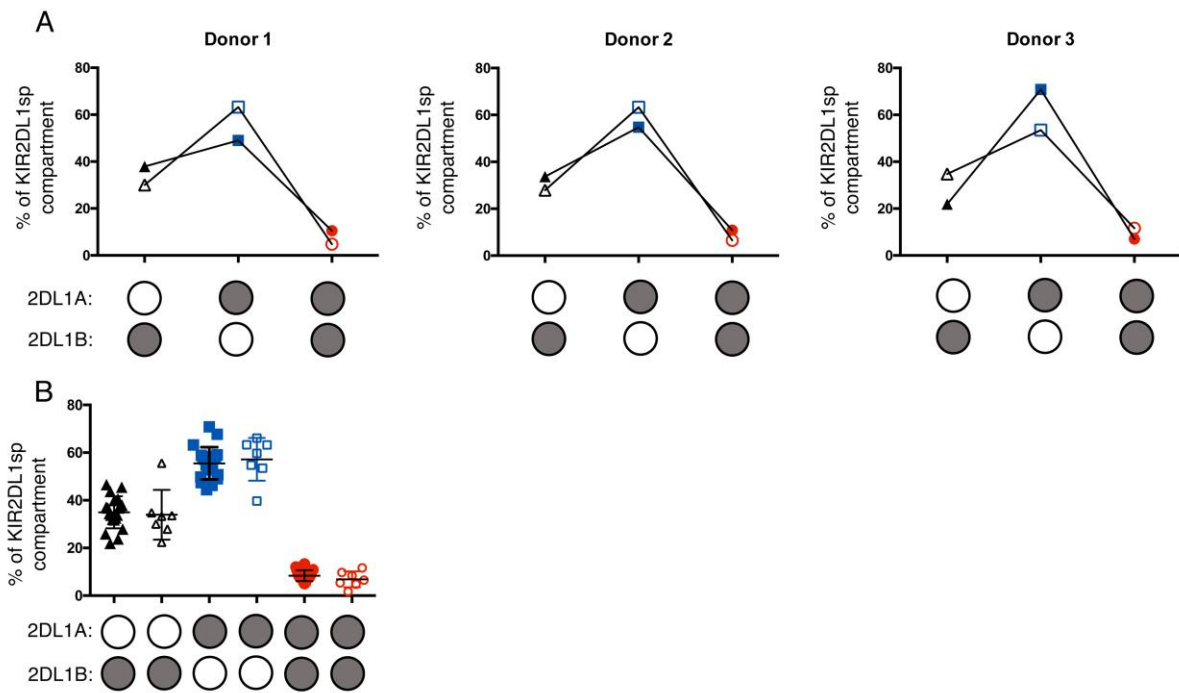


Figure S2. KIR2DL1 allotype expression is similar between peripheral blood and decidua

Matched cryopreserved decidual and peripheral blood mononuclear cells from donors heterozygous for *KIR2DL1A* and *KIR2DL1B* were stained. $KIR2DL2/3/S2^{neg} 2DS1^{neg} 2DL1^{pos}$ NK cells were identified and proportions of $KIR2DL1A^{pos}$ and $KIR2DL1B^{pos}$ cells calculated. Data from 3 matched pairs (**A**) and all *KIR2DL1A/B* heterozygotes (**B**) are shown (mean \pm SD). Filled shapes = peripheral blood, open shapes = decidual NK cells.

Supplementary Table S1.

Known Cross-reactivity of anti-KIR monoclonal antibodies, with selected KIR. Antibodies are indicated by their clone name

Clone	2DL1*001/002/003	2DL1*004	2DS1	2DL3	2DL2/S2
8C11	X			X	X
1127b		X	X		
REA284	X	X			
EB6	X	X	X	*005	
GL183				X	X
CH-L				X	X
143211	X	X			

'X' indicates monoclonal does react with that KIR allotype.