

**Supplementary table and figure 3.** Results of PASC analysis: similarities between hartmanivirus L and S segments above, and top matches for HISV-1 L and S segments below.

### L segments

	HISV-1	HISV-2	OScV-1	OScV-2	VPZV-1	VPZV-2	DaMV-1
HISV-1	100,0 %						
HISV-2	88,7 %	100,0 %					
OScV-1	62,8 %	63,4 %	100,0 %				
OScV-2	63,3 %	64,1 %	85,0 %	100,0 %			
VPZV-1	63,9 %	63,4 %	63,3 %	63,9 %	100,0 %		
VPZV-2	64,0 %	62,9 %	62,4 %	63,1 %	85,9 %	100,0 %	
DaMV-1	66,8 %	67,3 %	63,6 %	62,9 %	63,5 %	64,3 %	100,0 %

### S segments

	HISV-1	HISV-2	OScV-1	OScV-2	VPZV-1	VPZV-2	DaMV-1
HISV-1	100,0 %						
HISV-2	85,4 %	100,0 %					
OScV-1	59,0 %	58,9 %	100,0 %				
OScV-2	59,0 %	59,3 %	78,0 %	100,0 %			
VPZV-1	59,8 %	59,9 %	58,9 %	57,9 %	100,0 %		
VPZV-2	61,2 %	60,0 %	58,5 %	57,1 %	83,8 %	100,0 %	
DaMV-1	64,9 %	64,3 %	59,5 %	60,4 %	60,7 %	61,0 %	100,0 %

Top matches for Icl|HISV-1\_isolate1 L segment:

BLAST-based alignments

1	19,05 %	gi 62766429 gb AY924389.1	Mammarenavirus Serra do Navio mammarenavirus
2	18,27 %	gi 821492670 gb KP071674.1	Reptarenavirus unclassified Reptarenavirus unidentified Reptarenavirus
3	18,17 %	gi 34365541 ref NC_005082.1	Mammarenavirus Guanarito mammarenavirus
4	16,79 %	gi 164519632 gb AY216503.2	Mammarenavirus Bear Canyon mammarenavirus
5	16,44 %	gi 821492083 gb KP071510.1	Reptarenavirus unclassified Reptarenavirus unidentified Reptarenavirus
6	16,38 %	gi 821492546 gb KP071642.1	Reptarenavirus unclassified Reptarenavirus unidentified Reptarenavirus
7	16,21 %	gi 821492209 gb KP071547.1	Reptarenavirus unclassified Reptarenavirus unidentified Reptarenavirus
8	16,20 %	gi 155733526 gb EF529745.1	Mammarenavirus Cali mammarenavirus
9	16,10 %	gi 821492247 gb KP071561.1	Reptarenavirus unclassified Reptarenavirus unidentified Reptarenavirus
10	16,09 %	gi 821492286 gb KP071570.1	Reptarenavirus unclassified Reptarenavirus unidentified Reptarenavirus
11	16,03 %	gi 821492697 gb KP071680.1	Reptarenavirus unclassified Reptarenavirus unidentified Reptarenavirus
12	15,91 %	gi 164607196 ref NC_010250.1	Mammarenavirus Oliveros mammarenavirus
13	15,91 %	gi 594140721 ref NC_023763.1	Mammarenavirus Merino Walk mammarenavirus
14	15,84 %	gi 821492230 gb KP071552.1	Reptarenavirus unclassified Reptarenavirus unidentified Reptarenavirus
15	15,75 %	gi 385140456 gb JF912084.1	Mammarenavirus Lymphocytic choriomeningitis mammarenavirus

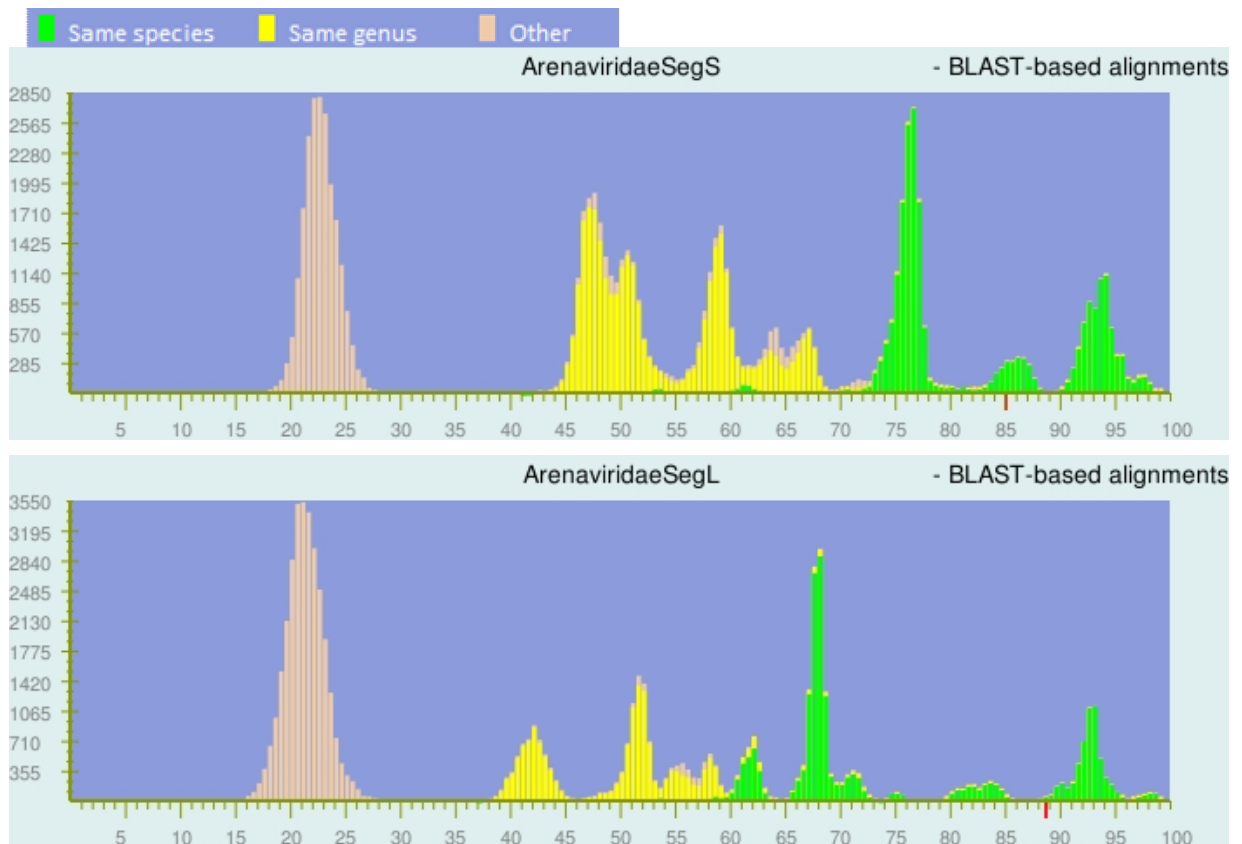
Top matches for Icl|HISV-1\_isolate1 S segment :

BLAST-based alignments

1	18.21%	gi 695315947 gb KM822120.1	Mammarenavirus Lassa mammarenavirus
2	17.55%	gi 695313614 gb KM821828.1	Mammarenavirus Lassa mammarenavirus
3	17.28%	gi 695314110 gb KM821882.1	Mammarenavirus Lassa mammarenavirus
4	17.25%	gi 570339355 gb KC669699.1	Mammarenavirus Loei River mammarenavirus
5	17.08%	gi 695315877 gb KM822113.1	Mammarenavirus Lassa mammarenavirus
6	16.99%	gi 695313728 gb KM821841.1	Mammarenavirus Lassa mammarenavirus
7	16.99%	gi 52627079 ref NC_006317.1	Mammarenavirus Brazilian mammarenavirus
8	16.74%	gi 695313567 gb KM821822.1	Mammarenavirus Lassa mammarenavirus
9	16.72%	gi 1032562881 gb KT992420.1	Mammarenavirus Lassa mammarenavirus
10	16.67%	gi 695313258 gb KM821783.1	Mammarenavirus Lassa mammarenavirus
11	16.58%	gi 695313871 gb KM821856.1	Mammarenavirus Lassa mammarenavirus
12	16.3%	gi 695313805 gb KM821848.1	Mammarenavirus Lassa mammarenavirus
13	16.11%	gi 695313599 gb KM821826.1	Mammarenavirus Lassa mammarenavirus
14	15.94%	gi 297381012 gb GU830839.1	Mammarenavirus Lassa mammarenavirus
15	15.89%	gi 46373061 gb AF246121.2	Mammarenavirus Lassa mammarenavirus

Graphical display of PASC analysis results: top panels show PASC analysis of all hartmanivirus S and L segments; bottom panels show PASC analysis of HISV-1 S and L segments below.

### PASC analysis of HISV-1 S (top) and L (bottom) segments.



### PASC analysis of S (top) and L (bottom) segments of hartmaniviruses described in this study,.

