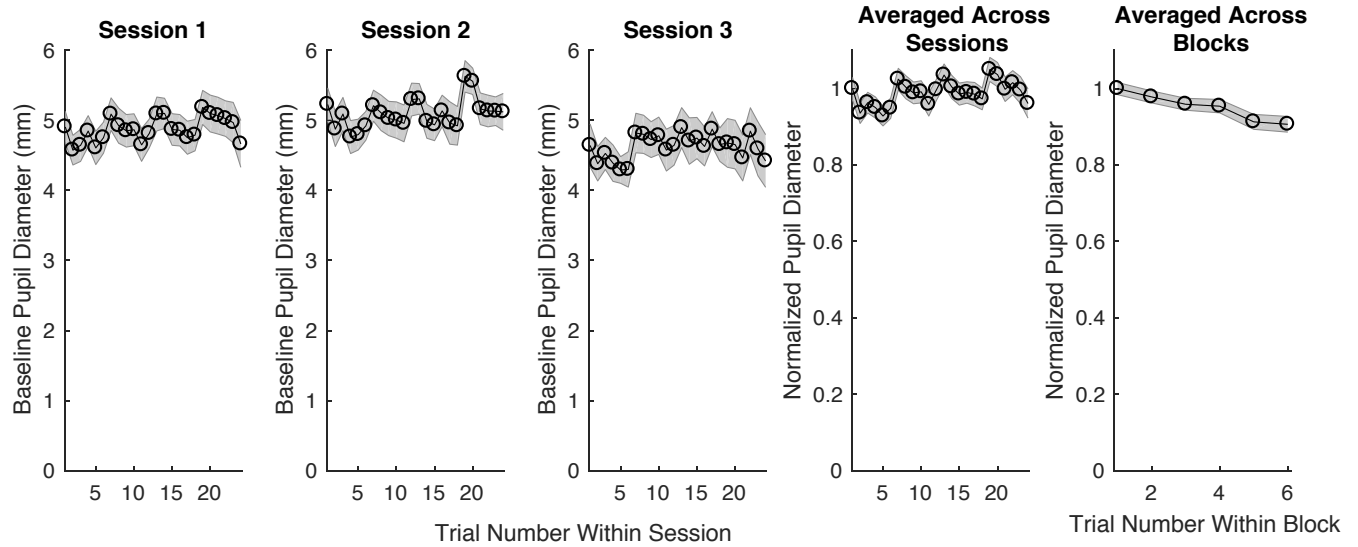
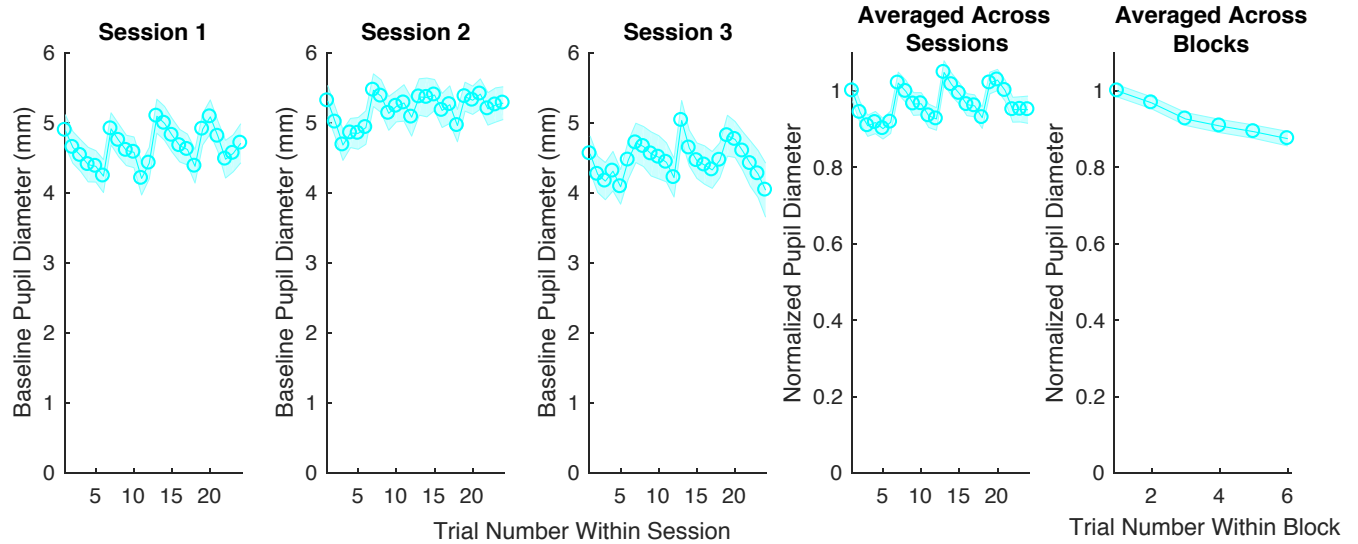


## Baseline Pupil Size

LMS



Melanopsin



Supplementary Figure 1. Baseline pupil size as a function of trial number. We examined the baseline pupil size averaged over the 1 second prior to stimulus onset. For each trial, we averaged across subjects for each stimulus condition. This average baseline pupil size is plotted against trial number. The first three columns show the average baseline size for Sessions 1-3. The fourth column plots the data after normalizing pupil diameter within each session by the average baseline pupil diameter from the first trial within that session, and then averaging across sessions. The final column averages these normalized data across the 6-trial blocks. A general trend of decreasing baseline pupil size across trials within a block is seen for both LMS-directed (top) and melanopsin-directed (bottom) stimulation. Error bars reflect standard error of the mean.