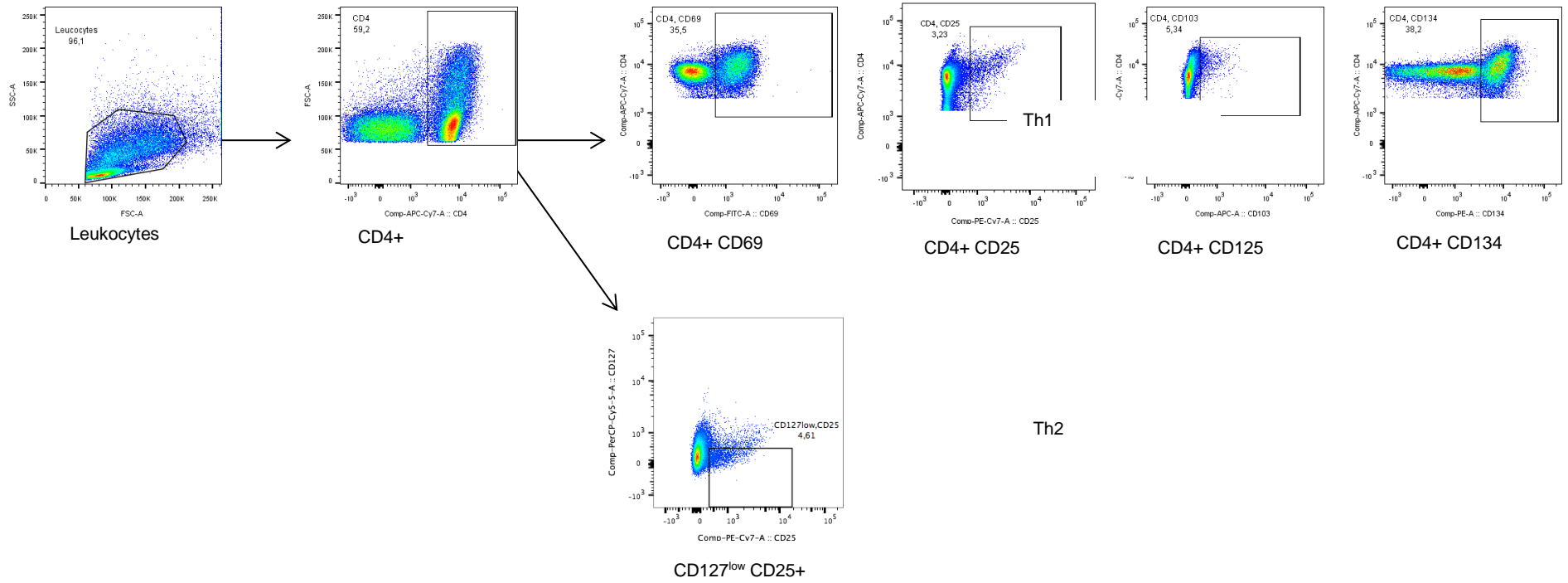
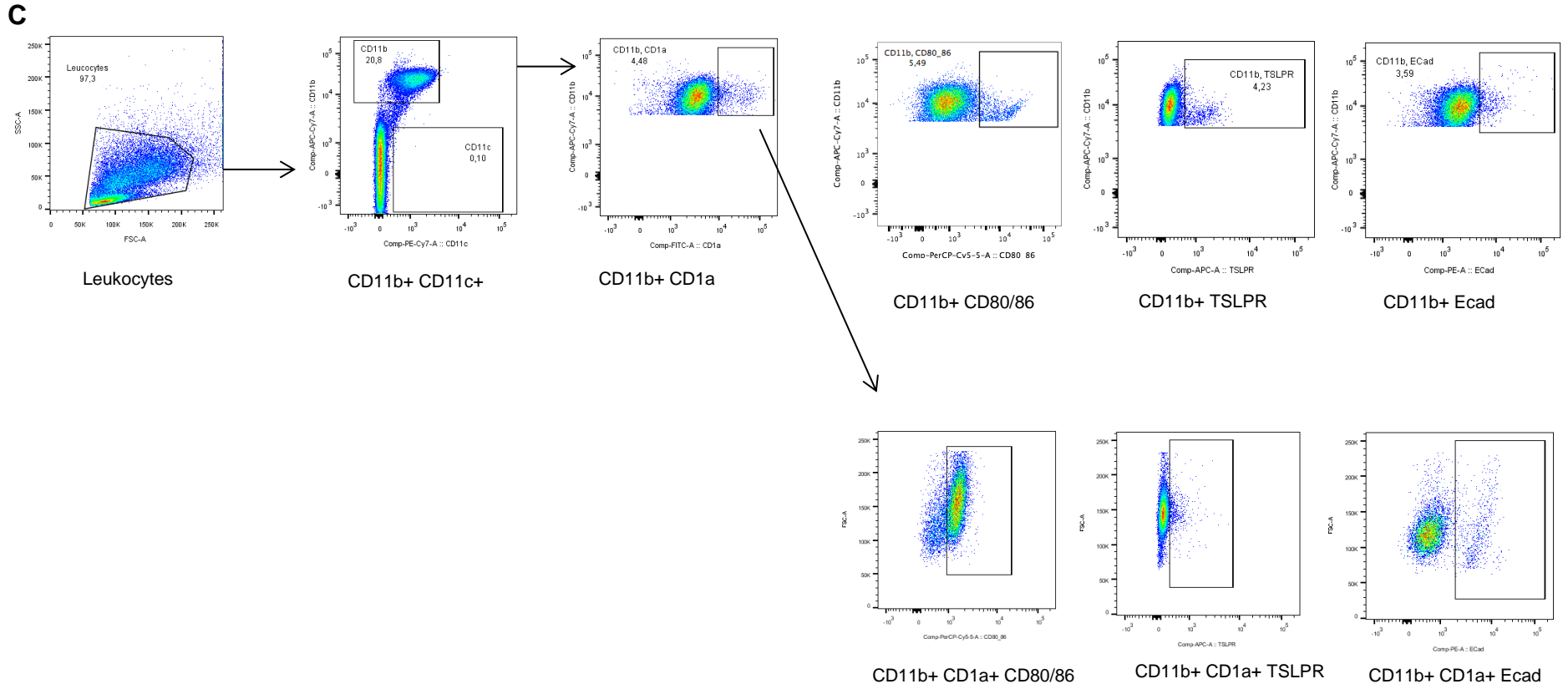
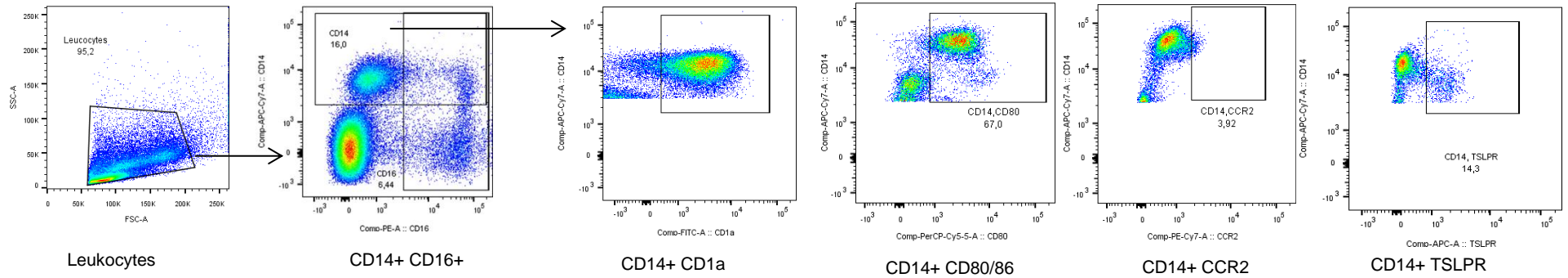


**B**



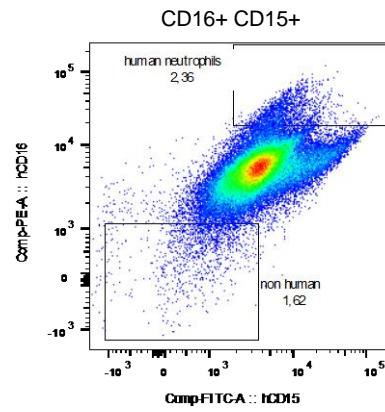
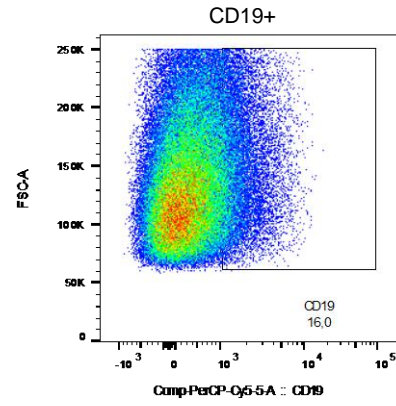
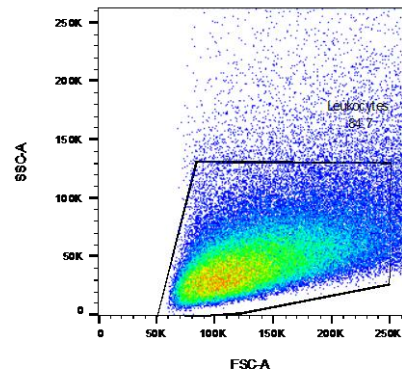


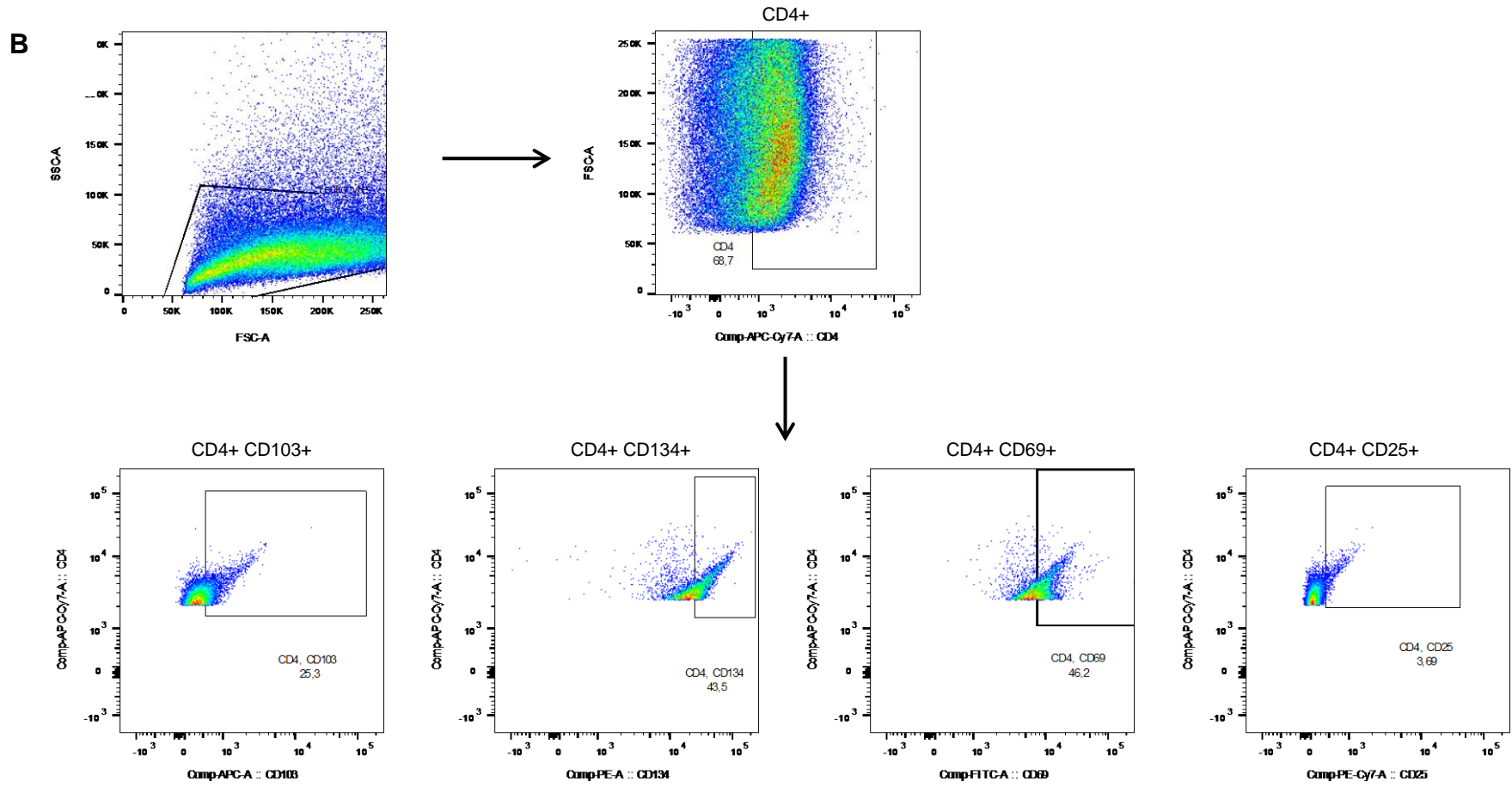
D



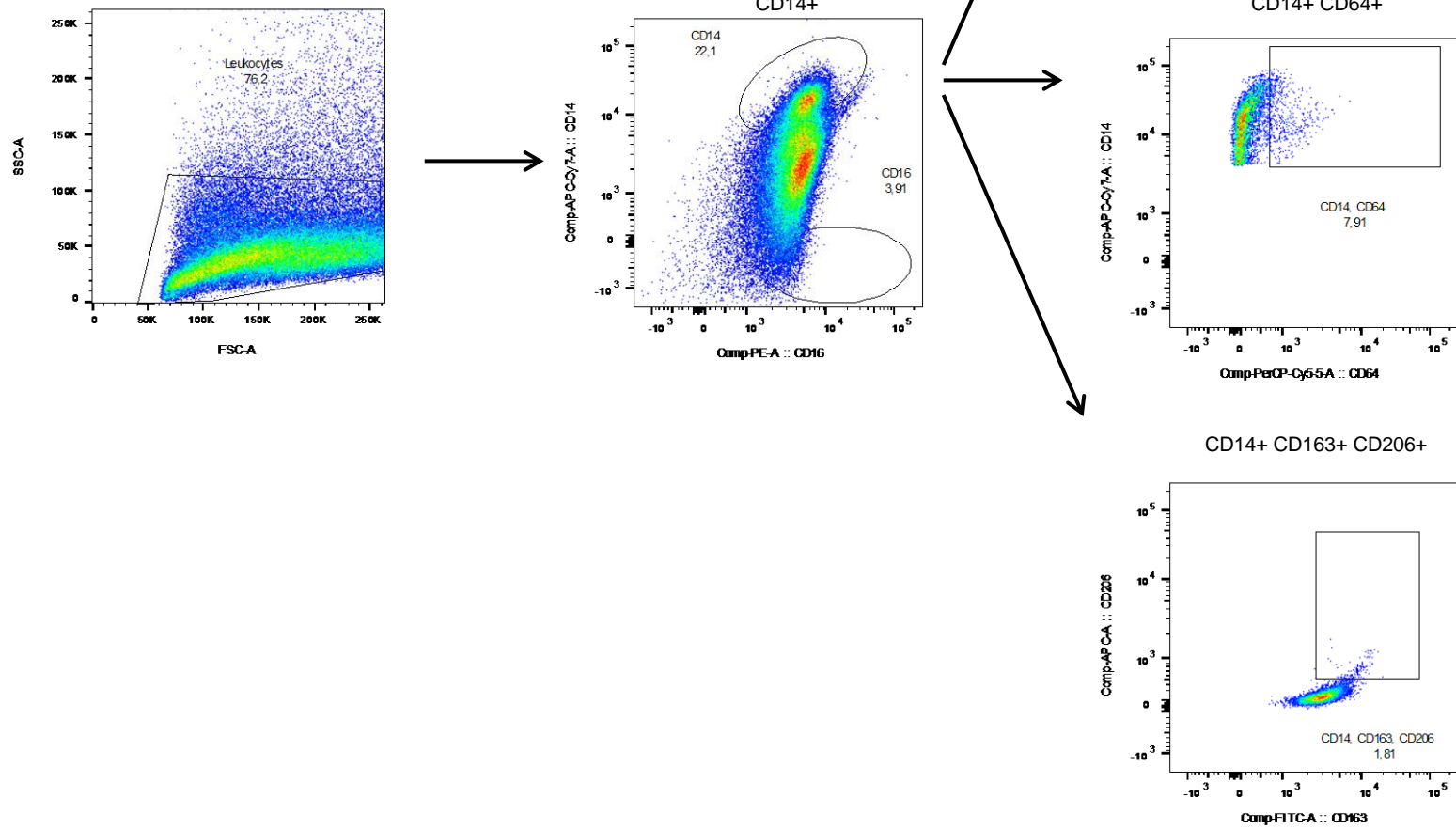
**Figure S1. Gating strategy** (A) central memory, effector memory, naive and effector CD4+ cells; (B) Th1, Th2, Th17 and Th22 T-cells; (C) activated CD4+ T-cells and Tregs; (D) CD11b+ macrophages; (E) CD14+ monocytes. Leukocytes were labeled as described in Material and Methods using antibodies listed in Table S1.

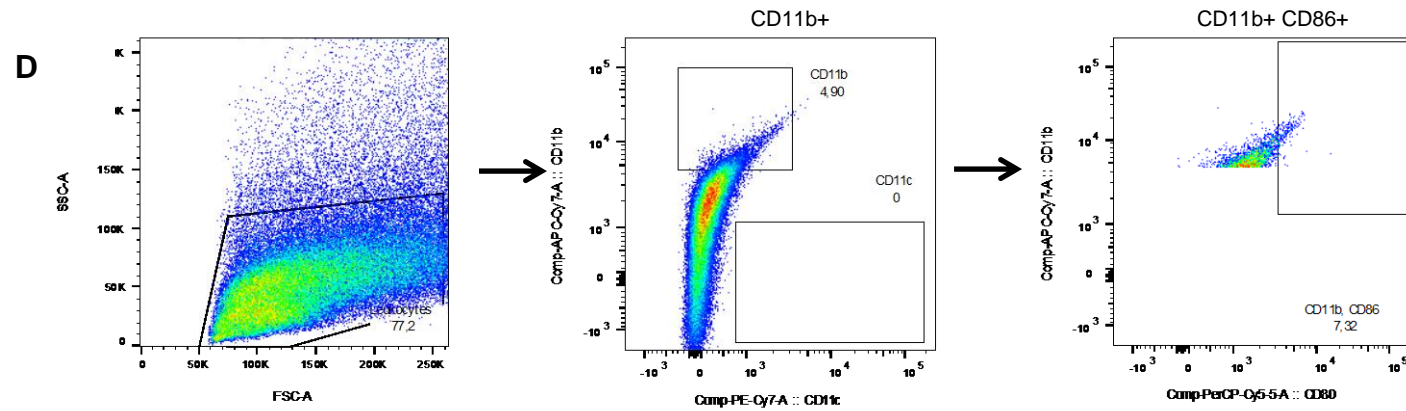
A





C





**Figure S2. Gating strategy for leukocytes isolated from colon.** (A) B cells, human neutrophils; (B) activated CD4<sup>+</sup> T-cells; (C) CD14<sup>+</sup> monocytes (D) CD11b<sup>+</sup> macrophages. Leukocytes were labeled as described in Material and Methods using antibodies listed in Table S1.



**Table S1. Antibodies used to label leucocytes**

Surfacemarker (anti human)	Colour	Clone	Catalogue Number
CD19	Peridine-chlorophyll-protein complex cyanine dye (PerCP-Cy™ 5.5)	HIB19	302230
CD38	Phycoerythrin (PE)	HB-7	356603
CD27	Pe-Cy7	M-T271	356411
IgD	Fluorescin isothiocyanate (FITC)	IA6-2	348217
CD4	Allophycocyanin (APC)- Cy7	OKT4	317417
CD62L	FITC	DREG-56	304803
CD45RO	PE	UCHL1	304205
CD45RA	Pe-Cy7	HI100	304125
CCR7	APC	G043H7	353213
CD8	PerCP-Cy™ 5.5	HIT8a	300923
CD103	APC	Ber-ACT8	350215
CD25	PE-Cy7	BC96	302611
CD14	APC-Cy7	HCD14	325619
CCR2	PE-Cy7	K036C2	357211
CD80/86	PerCP-Cy™ 5.5	IT2.2	305419
TSLPR*	APC	1B4	322807
CD1a (biotin)/secondary Ab streptavidin	FITC	HI149	300112
CD64	PerCP-Cy™ 5.5	10.1	305023
CD163	FITC	GHI/61	333617
CD206	APC	15-2	321109
CD16	PE	3G8	302007
CD11b	APC-Cy7	ICRF44	301341
CD11c	PE-Cy7	3.9	301607
ECad	PerCP-Cy™ 5.5	67A4	324105
CD127	PerCP-Cy™ 5.5	A019D5	351321
CD69	FITC	FN50	310903
CD134 (Ox40)	PE	Ber-ACT35	350003
CXCR3	FITC	G025H7	353703
CCR4	PE	L291H4	359411
CCR6	PE-Cy7	G034E3	353417
CCR10	APC	6588-5	341505

\* Thymic stromal lymphopoietin receptor

**Table S2. Cellular markers used to define immune cells**

Marker	Definition
CD19+ CD27+ IgD+	Unswitched memory B-cell
CD19+ CD27+ IgD-	Switched memory B-cell
CD19+ CD38+	Plasma cell
CD4+ CD45RO+ CD62L- CCR7-	Effector memory CD4+ T- cell
CD4+ CD45RO+ CD62L+, CCR7+	Central memory
CD4+ CD103+	Mucosal regulatory CD4+ T cell
CD4+ CCR4+	Th2, effector regulatory T- cell
CD4+ CD25+ CD127-	Regulatory T-cell
CD4+ CD134+	Activated CD4+ T cell
CD4+ CD69+	Activated CD4+ T cell
CD4+ CD25+	Activated CD4+ T cell
CD14+	Monocytes (MC)
CD14+ TSLPR*+	MC, expressing TSLPR
CD14+ CD64+	M1MC
CD14+ CD163+ CD206+	M2 MC, scavenging cells
CD14+ CD1a	MC CD1a expressing
CD11b+	Conventional dendritic cells (cDC1)
CD11b+ CD80/86+	cDC1, mature
CD11b+ HLADR+	cDC1, presenting
CD11b+ TSLPR*+	cDC1 TSLPR expressing
CD11b+ CD1a+	cDC1 CD1a expressing

\* Thymic stromal lymphopoietin receptor

**Table S3. Complete data set from *in vitro* studies**

[Click here to Download Table S3](#)

**Table S4. Complete data set from animal study**

[Click here to Download Table S4](#)

**Table S5. Complete data set from animal study testing ritonavir**

[Click here to Download Table S5](#)

**Table S6.**

[Click here to Download Table S6](#)