

Article

## Screening and Analysis of the Potential Bioactive Components in Rabbit Plasma after Oral Administration of Hot-Water Extracts from Leaves of *Bambusa textilis* McClure

Jin Wang, Yong-De Yue \*, Feng Tang and Jia Sun

SFA Key Laboratory of Bamboo and Rattan Science and Technology, International Centre for Bamboo and Rattan, No. 8 Futong Dongdajie, Wangjing, Chaoyang District, Beijing 100102, China; E-Mails: wangjin@icbr.ac.cn (J.W.); fengtang@icbr.ac.cn (F.T.); sunjia@icbr.ac.cn (J.S.)

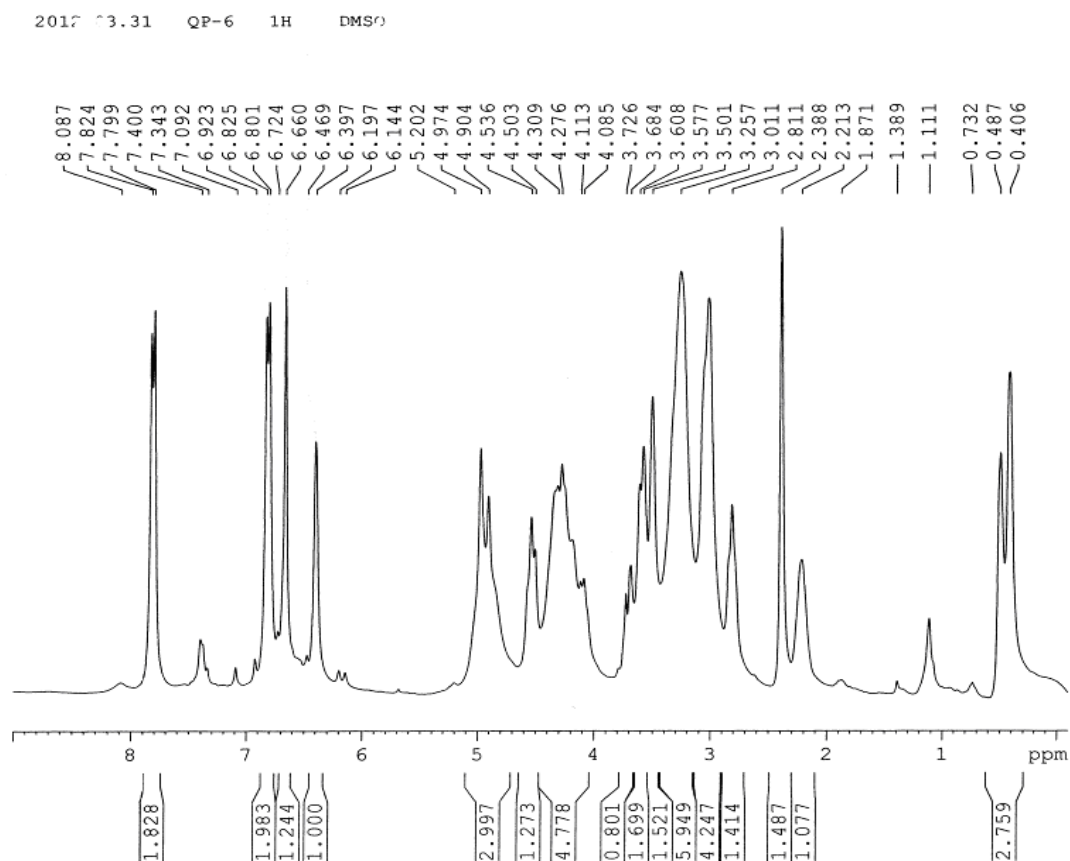
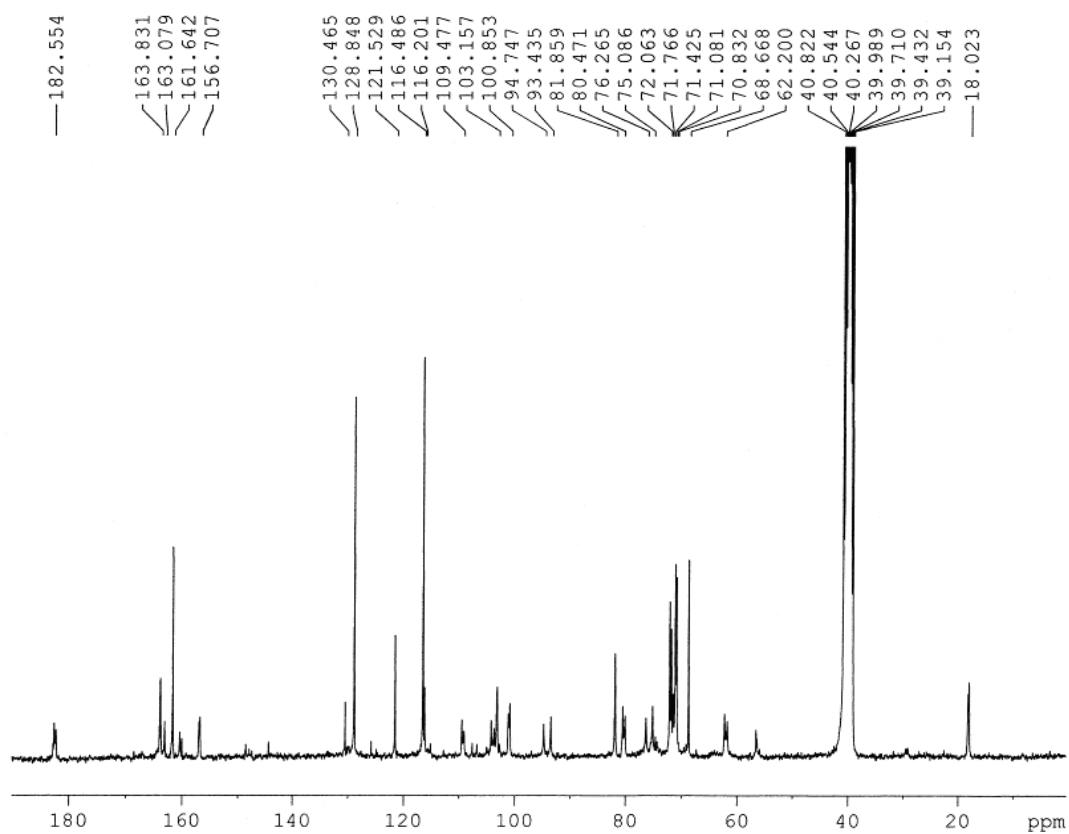
\* Author to whom correspondence should be addressed; E-Mail: yueyd@icbr.ac.cn;  
Tel./Fax: +86-10-8471-3741.

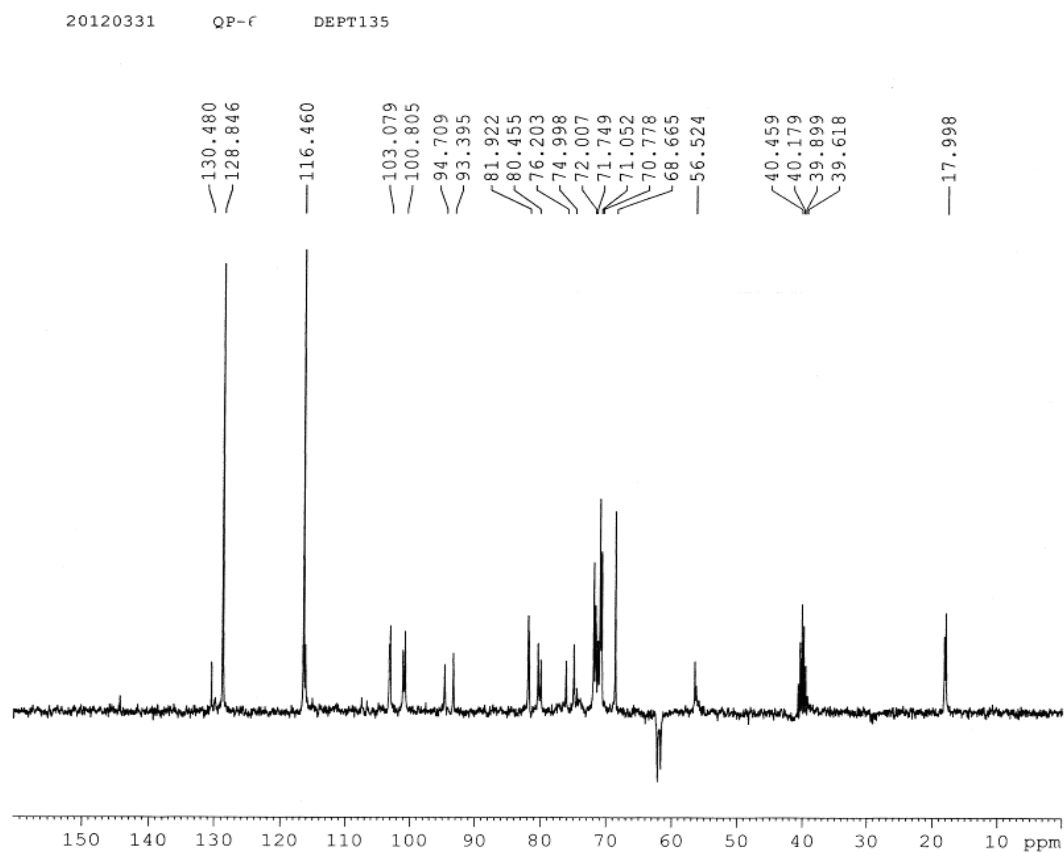
Received: 8 June 2012; in revised form: 17 July 2012 / Accepted: 18 July 2012 /

Published: 26 July 2012

---

### Supplementary Materials

**Figure 1.**  $^1\text{H-NMR}$  of compound III.**Figure 2.**  $^{13}\text{C-NMR}$  of compound III.

**Figure 3.** DEPT 135 NMR spectrum for compound III.**Figure 4.** DEPT 90 NMR spectrum for compound III.