

## Diffuse alveolar hemorrhage is most often fatal and is affected by graft source, conditioning regimen toxicity, and engraftment kinetics

Fatma Keklik,<sup>1</sup> Ezzideen Barjes Alrawi,<sup>1</sup> Qing Cao,<sup>2</sup> Nelli Bejanyan,<sup>1</sup> Armin Rashidi,<sup>1</sup> Aleksandr Lazaryan,<sup>1</sup> Patrick Arndt,<sup>3</sup> Erhan H. Dincer,<sup>3</sup> Veronika Bachanova,<sup>1</sup> Erica D. Warlick,<sup>1</sup> Margaret L. MacMillan,<sup>4</sup> Mukta Arora,<sup>1</sup> Jeffrey Miller,<sup>1</sup> Claudio G Brunstein,<sup>1</sup> Daniel J. Weisdorf<sup>1</sup> and Celalettin Ustun<sup>1</sup>

<sup>1</sup>Division of Hematology-Oncology and Transplantation, Department of Medicine; <sup>2</sup>Biostatistics and Bioinformatics; <sup>3</sup>Division of Pulmonary, Allergy, Critical Care and Sleep Medicine, Department of Medicine and <sup>4</sup>Division of Pediatric Blood and Marrow Transplantation, Department of Pediatrics, University of Minnesota, Minneapolis, MN, USA

©2018 Ferrata Storti Foundation. This is an open-access paper. doi:10.3324/haematol.2018.189134

Received: January 23, 2018.

Accepted: July 27, 2018.

Pre-published: August 3, 2018.

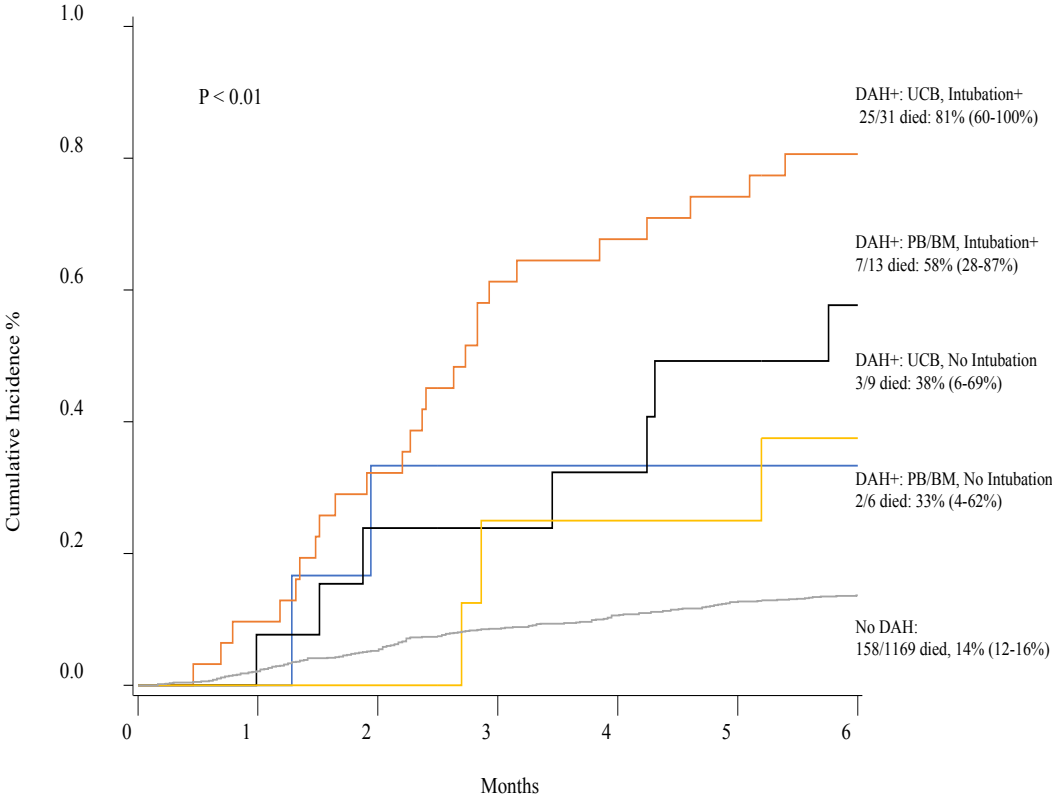
Correspondence: celalettin\_ustun@rush.edu

---

Supplemental Table

Factor	Strata	PB/BM	UCB	P-value
<b>Number</b>		658	570	
<b>Sex</b>	Male	405 (62)	342 (60)	0.58
	Female	253 (38)	228 (40)	
<b>Age at HCT (years)</b>	0<35	309 (47)	313 (55)	<0.01
	>=35	349 (53)	257 (45)	
<b>Malignant Disease</b>	Yes	442 (67)	438 (77)	<0.01
	No	216 (33)	132 (23)	
<b>Disease Risk</b>	Standard	430 (65)	406 (71)	0.03
	High	228 (35)	164 (29)	
<b>Recipient CMV serology</b>	Positive	376 (57)	307 (54)	0.30
	Negative	277 (42)	255 (45)	
<b>Conditioning Intensity</b>	MAC	271 (41)	298 (52)	<0.01
	RIC	387 (59)	272 (48)	
<b>TBI</b>	Yes	475 (72)	441 (77)	0.04
	No	183 (28)	129 (23)	
<b>Conditioning Intensity by TBI</b>	MAC TBI	169 (26)	198 (35)	<0.01
	MAC no TBI	102 (16)	100 (17%)	
	RIC	387 (59)	272 (48)	
<b>Graft Source</b>	BM/PB	--	--	--
	UCB	--	--	
<b>Graft Cell dose TNC x10<sup>8</sup>/kg Median (range)</b>	BM/PB	5.2 (0-35.5)	0.5 (0-99)	--
	UCB			
<b>HLA match and graft source</b>	M BM/PB	556 (85)	--	--
	MM BM/PB	102 (15)	--	
	UCB	--	--	
<b>Post Transplant Events</b>				
<b>Neutrophil Engraftment</b>				
<b>N</b>		636	508	
<b>Median days (range)</b>		12 (0-39)	18 (0-42)	<0.01
<b>Platelet Engraftment</b>				
<b>N</b>		574	432	
<b>Median days (range)</b>		20 (0-168)	44 (0-175)	<0.01
<b>Acute GVHD grade II-IV</b>				
<b>N</b>		190	216	
<b>Median days (range)</b>		39 (11-174)	31 (13-148)	<0.01

**Supplemental Figure**



- (1) P-value was calculated from univariate 6 month TRM competing risk analysis treating relapse/progression as competing risk.
- (2) DAH +/- was defined as patients were diagnosed with/without DAH by day 180 post HCT.