

Supplementary

Figure S1. HPLC chromatogram of fractionation of dichloromethane extract of Propolis.

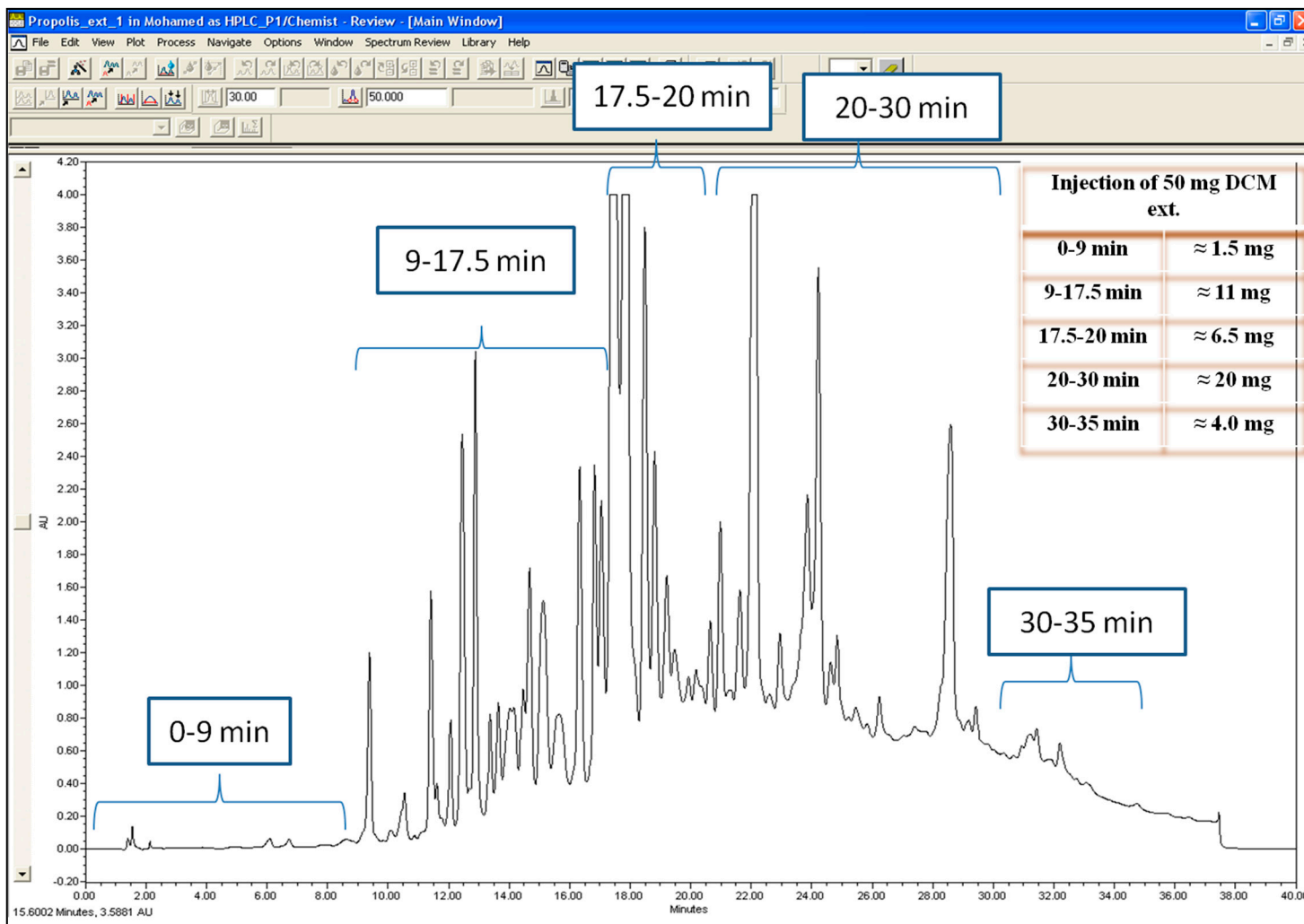


Figure S2. Identification of active constituents in Fraction 2 (15.5–20 min). **(A)** The HPLC chromatogram of the fractions, **(B)** The HPLC chromatogram of authentic reference standards. 1 (taxifolin, Tr 10 min), 2 (morin, Tr 12 min), 3 (quercetin, Tr 12.8 min), 4 (fisetin, Tr 13.5 min), 5 (apigenin, Tr 15.0 min), and 6 (galangin, Tr 18.0 min).

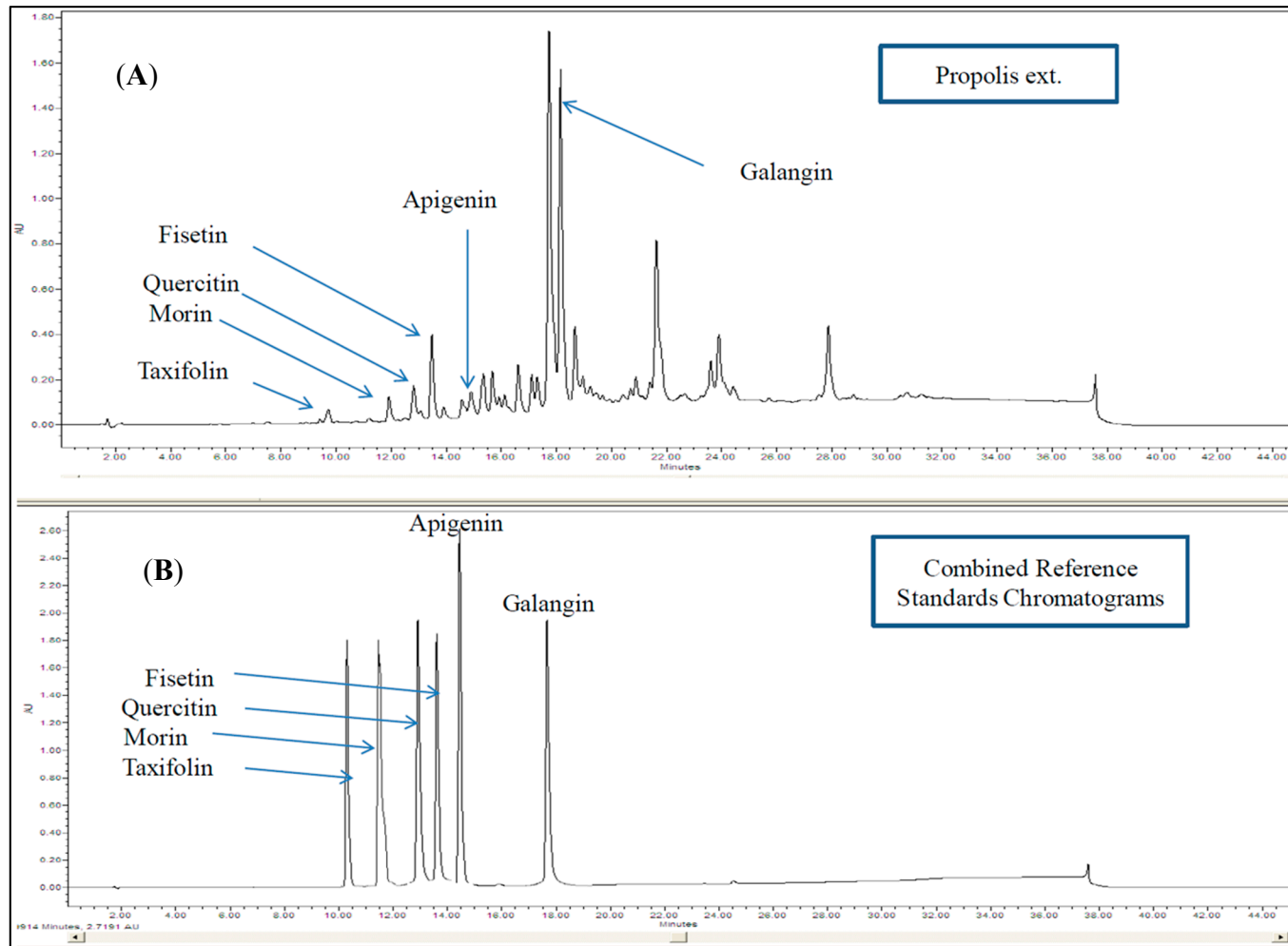


Figure S3. Individual HPLC chromatograms for Apigenin, Morin and Taxifolin.

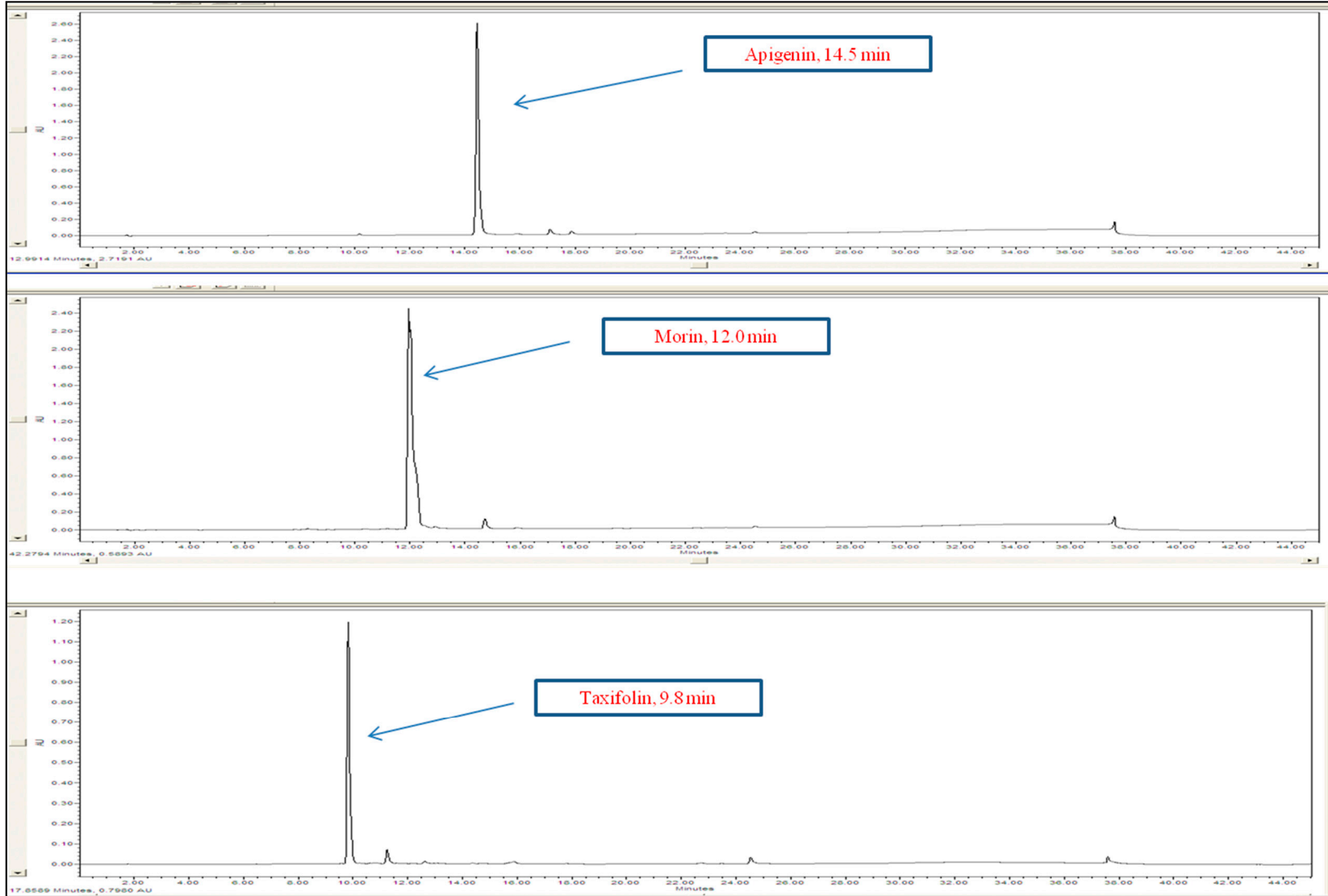


Figure S4. Individual HPLC Chromatograms for Quercetin and Galangin.

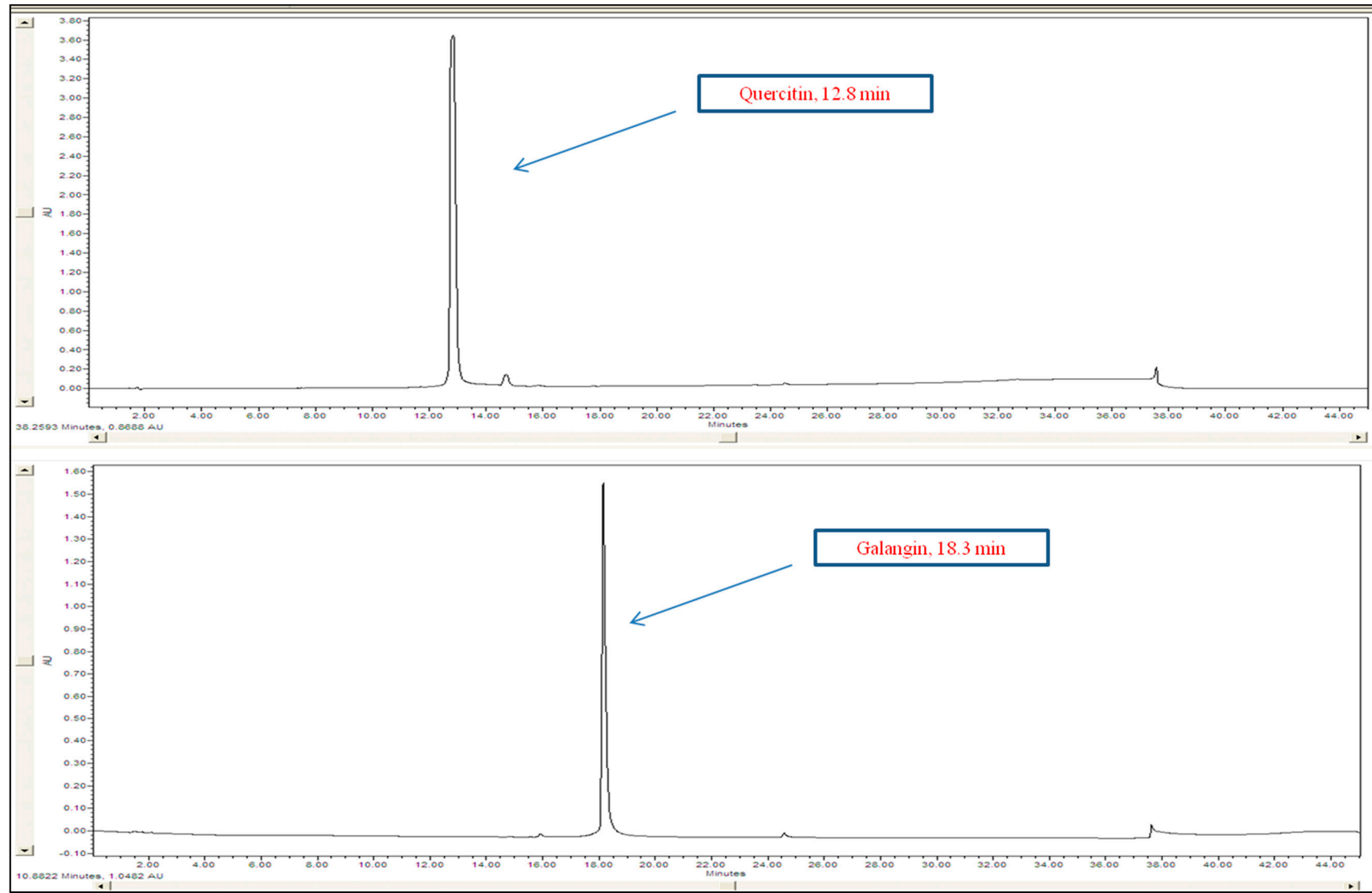


Figure S5. UHPLC/APCI-MS for the apigenin isolated from propolis.

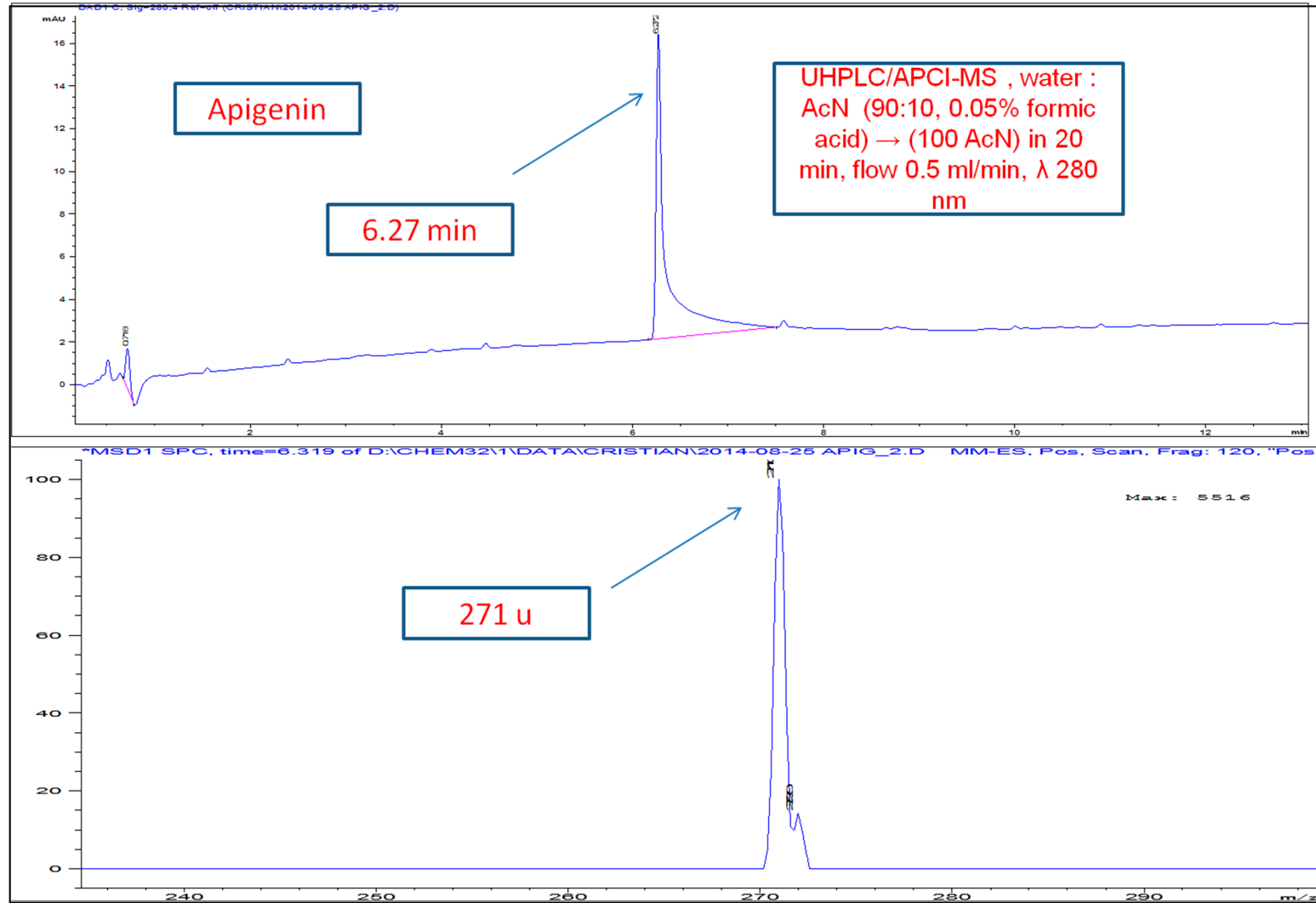


Figure S6. HRMS for the Apigenin isolated from propolis.

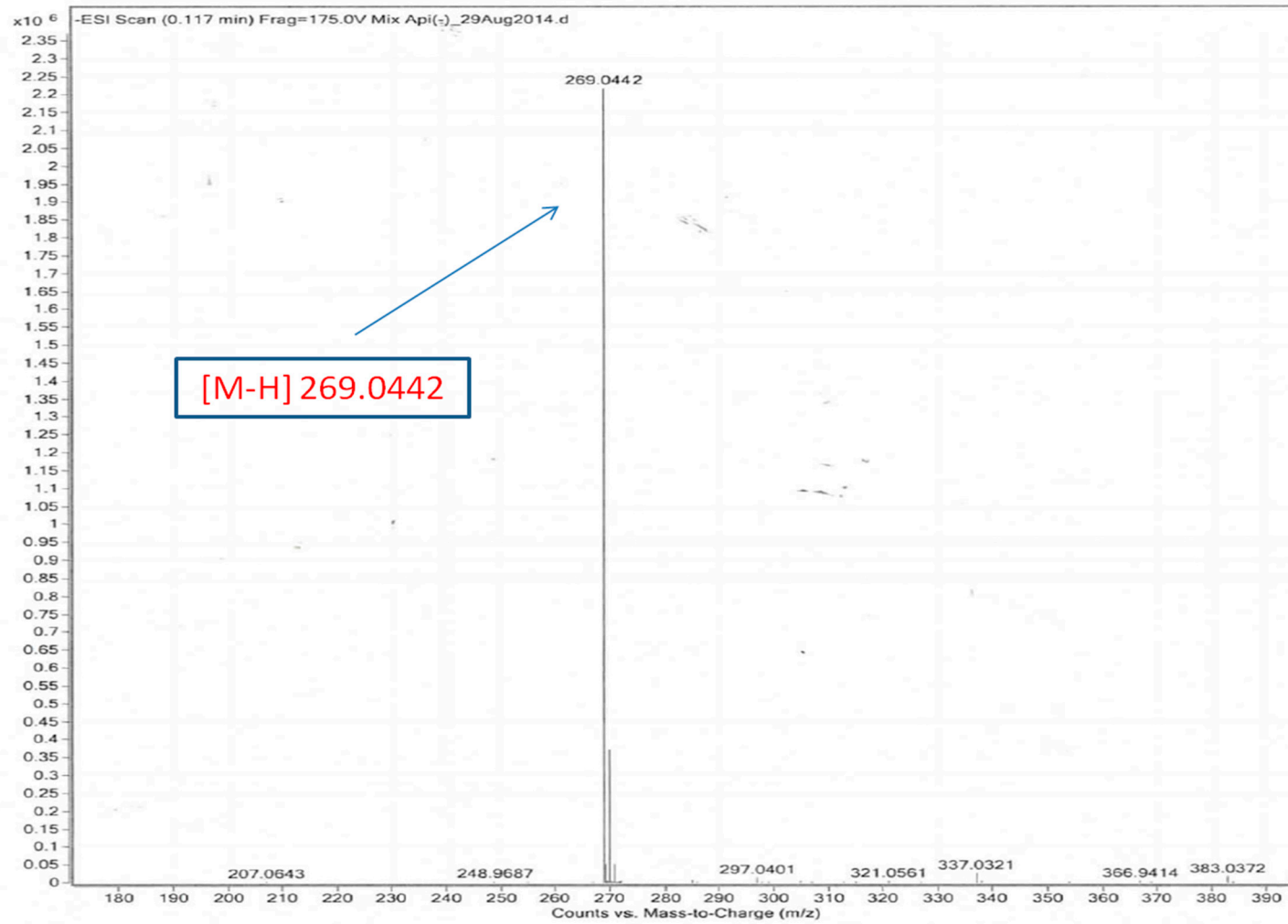


Figure S7. UHPLC/APCI-MS for the galangin isolated from propolis.

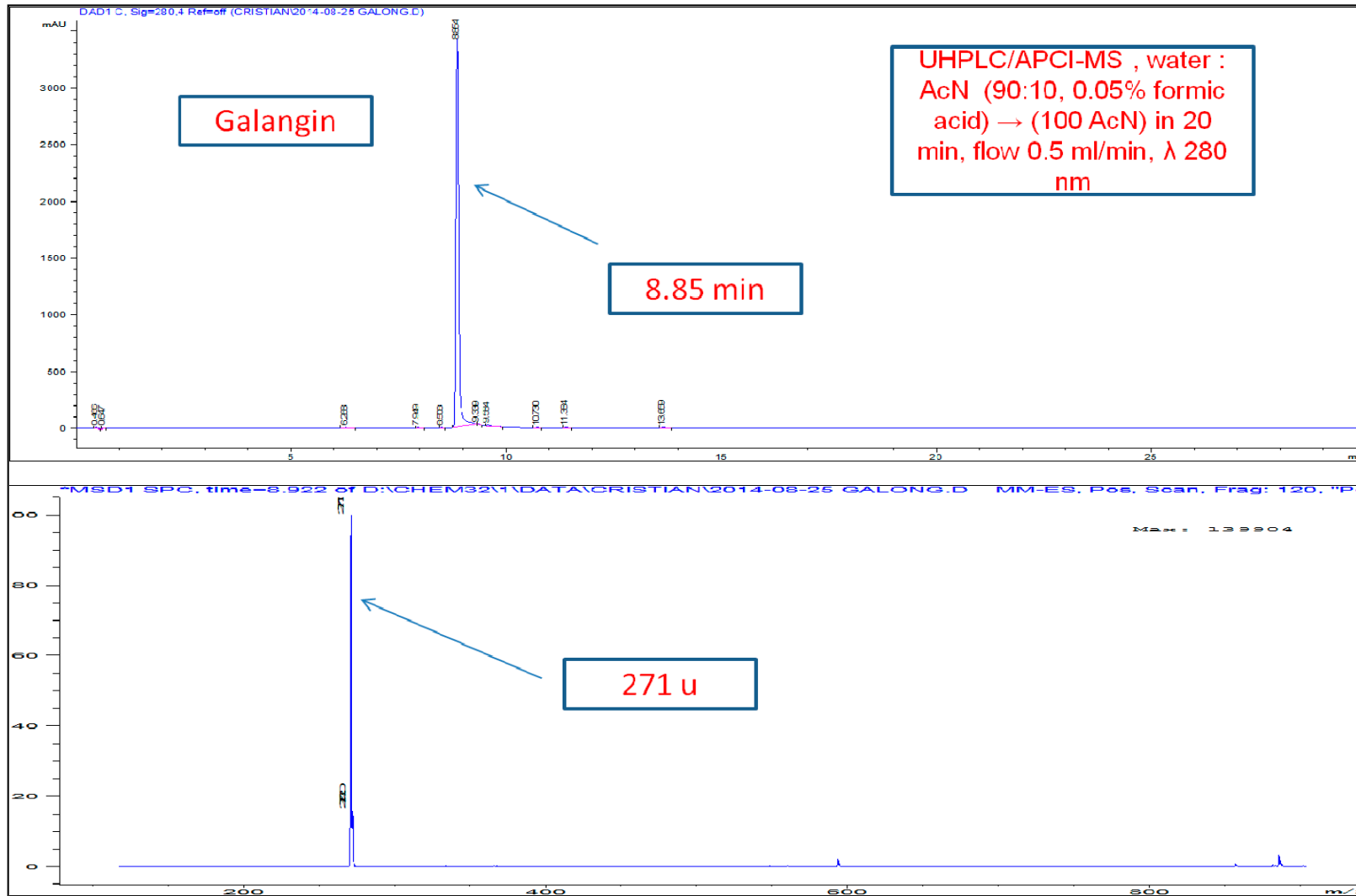


Figure S8. HRMS for galangin isolated from propolis.

