

Supplementary Materials

Figure S1. Representative images of the different fungal cultures at the time of harvest. (A) *C. albicans* yeast cells; (B) *C. albicans* hyphae; (C) *A. fumigatus* hyphae; (D) *M. circinelloides* hyphae. Bars, 50 μm .

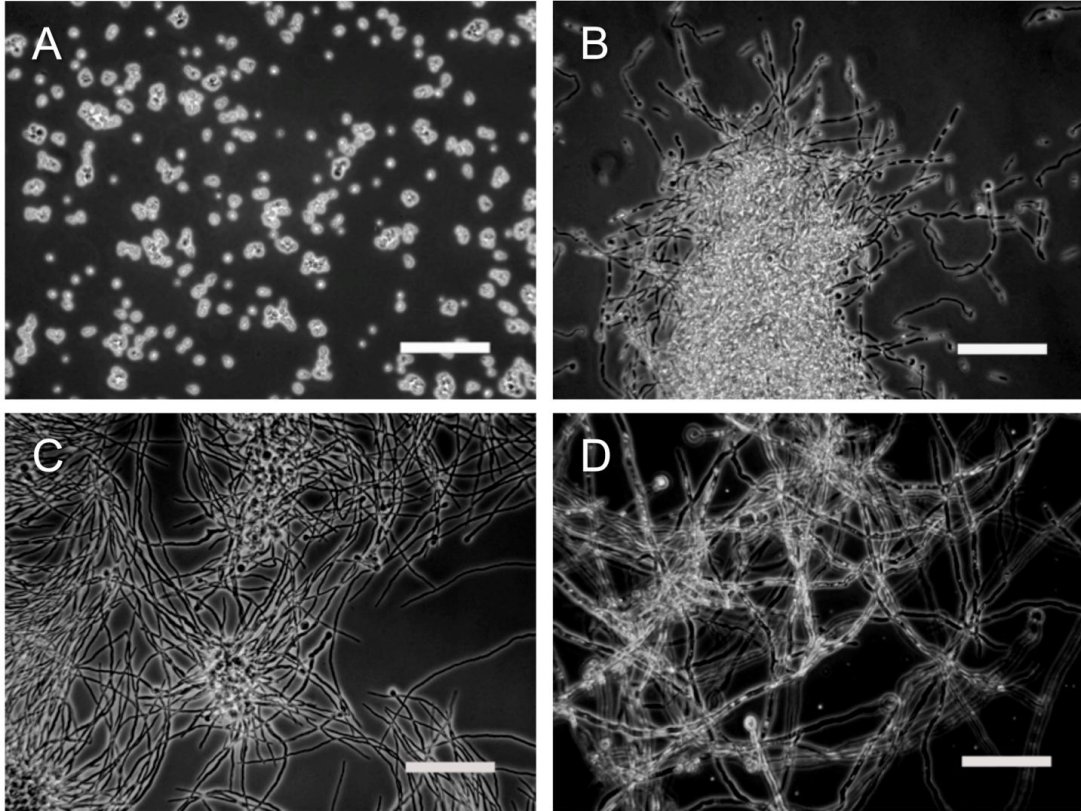
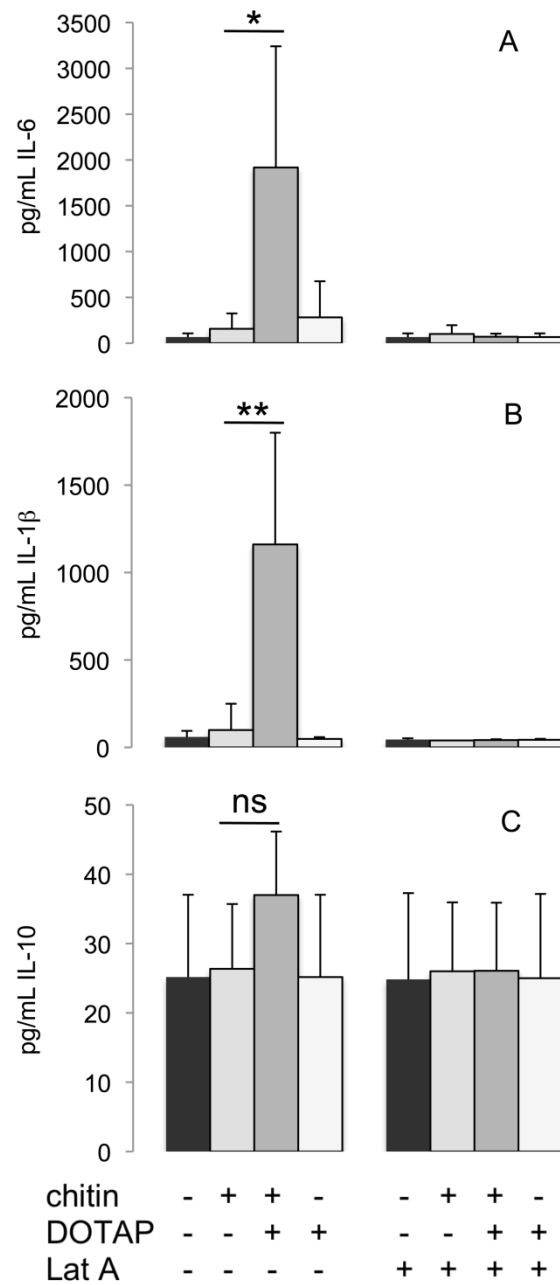


Figure S2. Endosomal transfection of 2 k chitin particles. The incubation of 10 µg/mL chitin particles with 10 µg/mL DOTAP significantly increases the induction of pro-inflammatory cytokines. As a control, incubation of PBMCs with 1 µM latrunculin A for 1 h before exposure to chitin blocks the uptake. (A) IL-6; (B) IL-1β; (C) IL-10.



Note: The 2 k chitin samples used for this experiment had been obtained using a more primitive protocol that included an autoclaving step in acid followed by KOH boils. * $p < 0.05$; ** $p < 0.001$; ns = not significant.