

Supplementary Information

Figure S1. The list of miRNAs with elevated expression in BLBC patients.

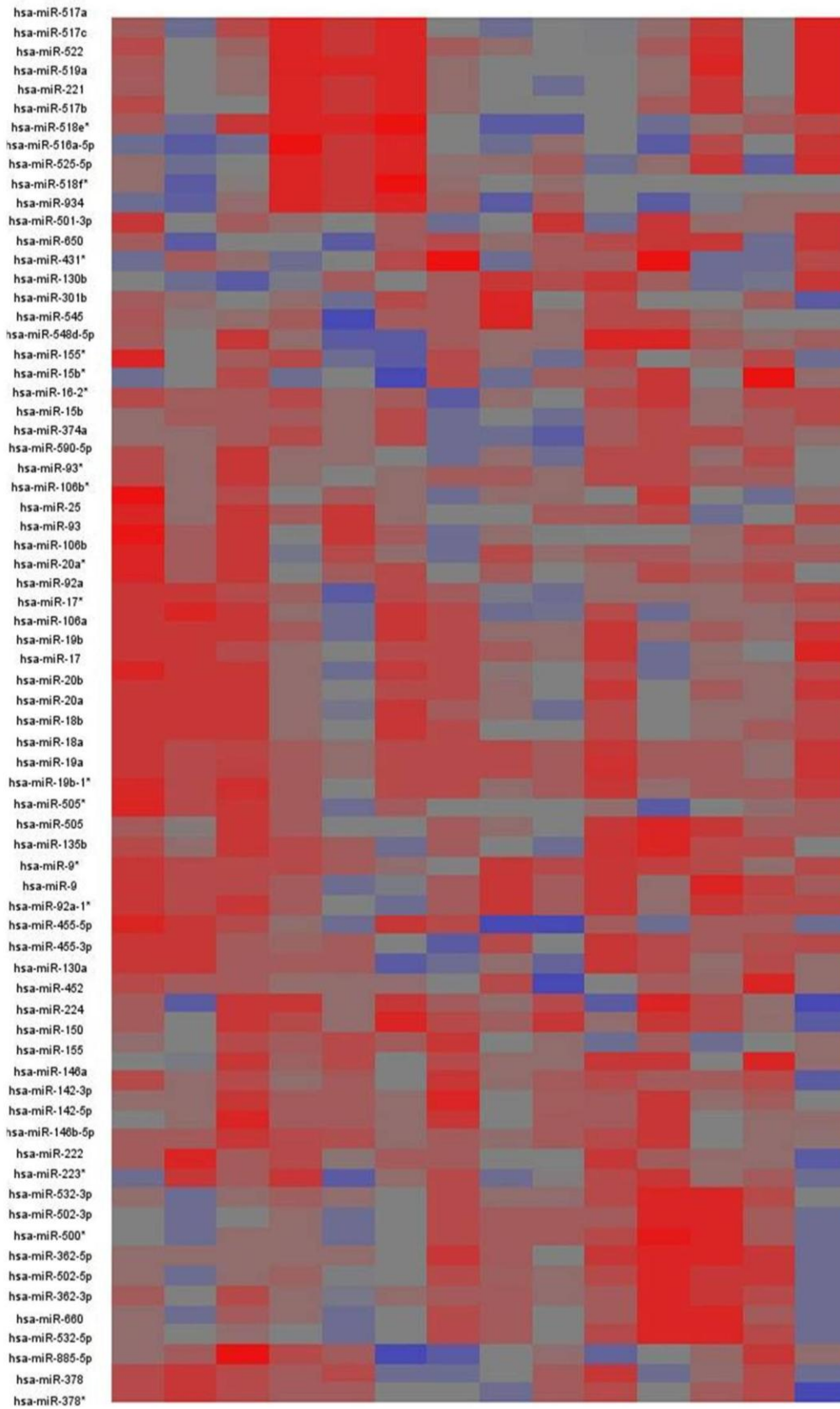


Figure S2. (A) miRNA inhibitors targeting miR-221 and miR-222 both suppressed migration in Hs578t cells. (B) Quantitative analysis of the migrated cell numbers in the wounds at day 3. Data are mean \pm SEM ($n = 3$). ** $p < 0.01$.

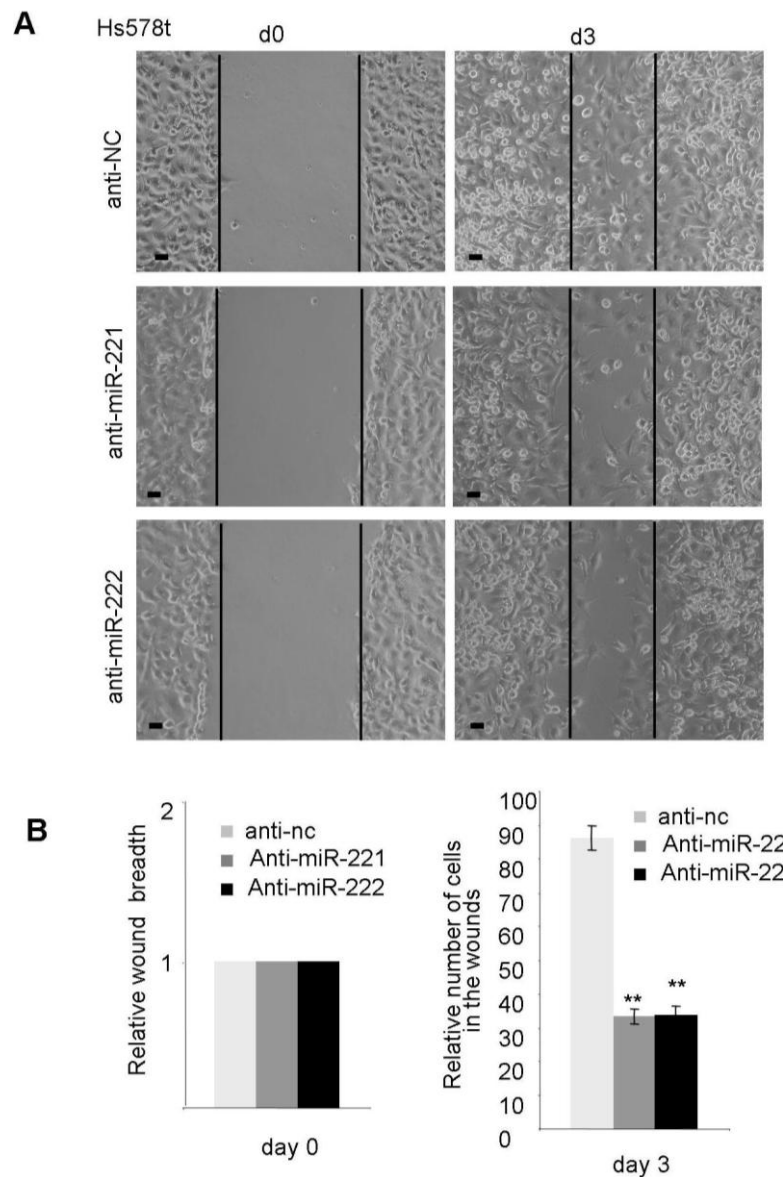


Figure S3. Quantitative analysis of the cell percentage at the different stages of a cell cycle in Figure 4C. * $p < 0.05$, ** $p < 0.01$.

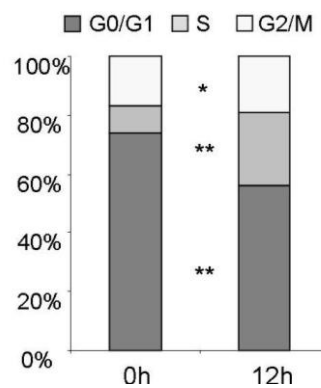


Figure S4. Quantitative real time PCR analysis showing SOCS1 mRNA decreased in miR-221- and miR-222- overexpressing MDA-MB-231 cells. Data are mean \pm SEM ($n = 3$). ** $p < 0.01$.

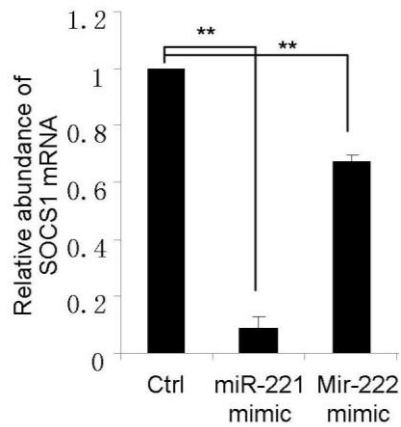


Figure S5. Luciferase reporter assays indicating direct interaction and inhibition of CDKN1B 3'UTR by miR-221 and miR-222. A mutated vector targeting miR-221/222 binding site did not show such inhibition by miR-221/222. Data are mean \pm SEM ($n = 3$). * $p < 0.05$, ** $p < 0.01$.

