

Supplementary Materials

Figure S1. ¹H-NMR Spectrum of Carvacrol (1) CDCl₃, 400 MHz).

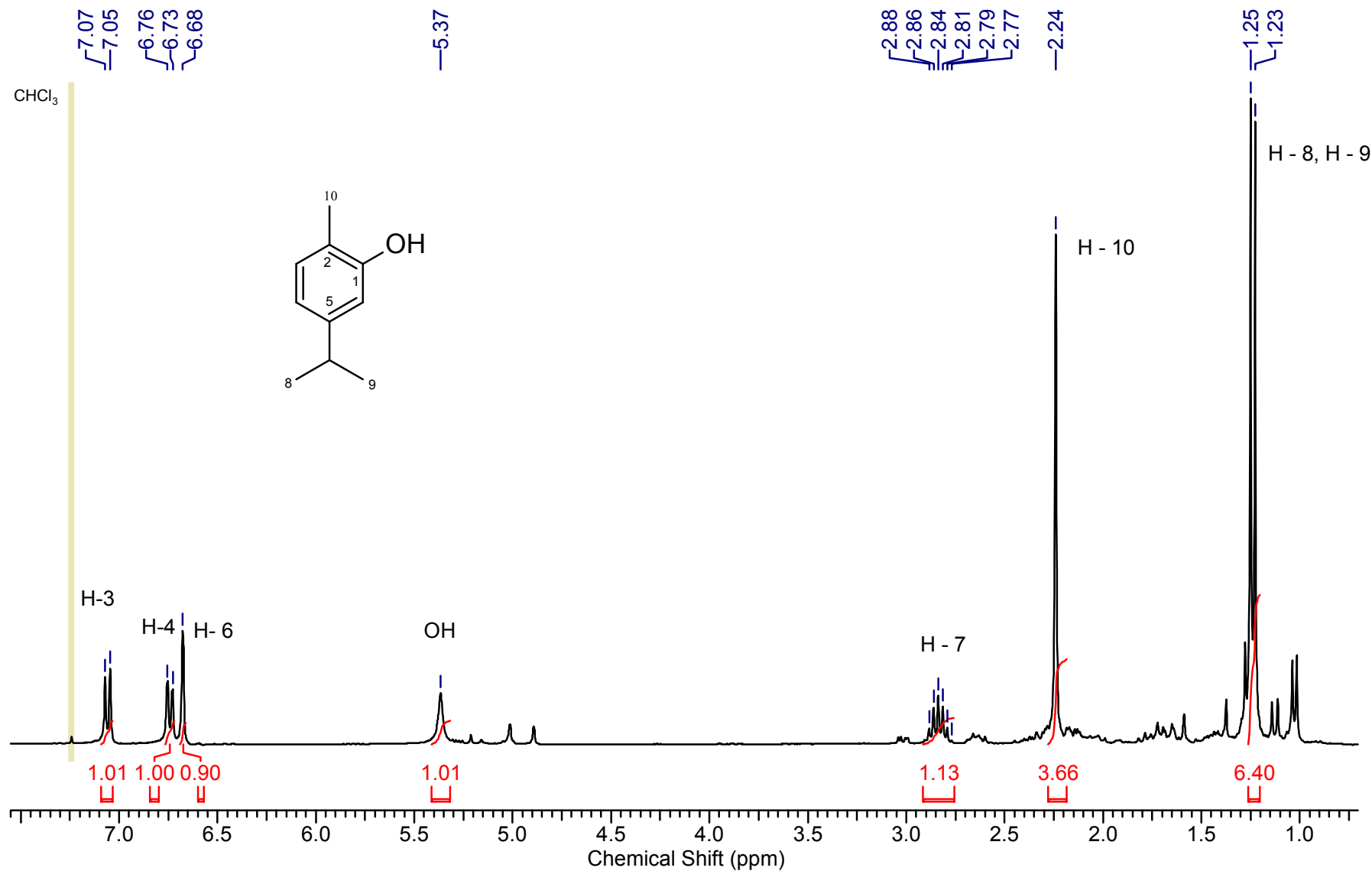


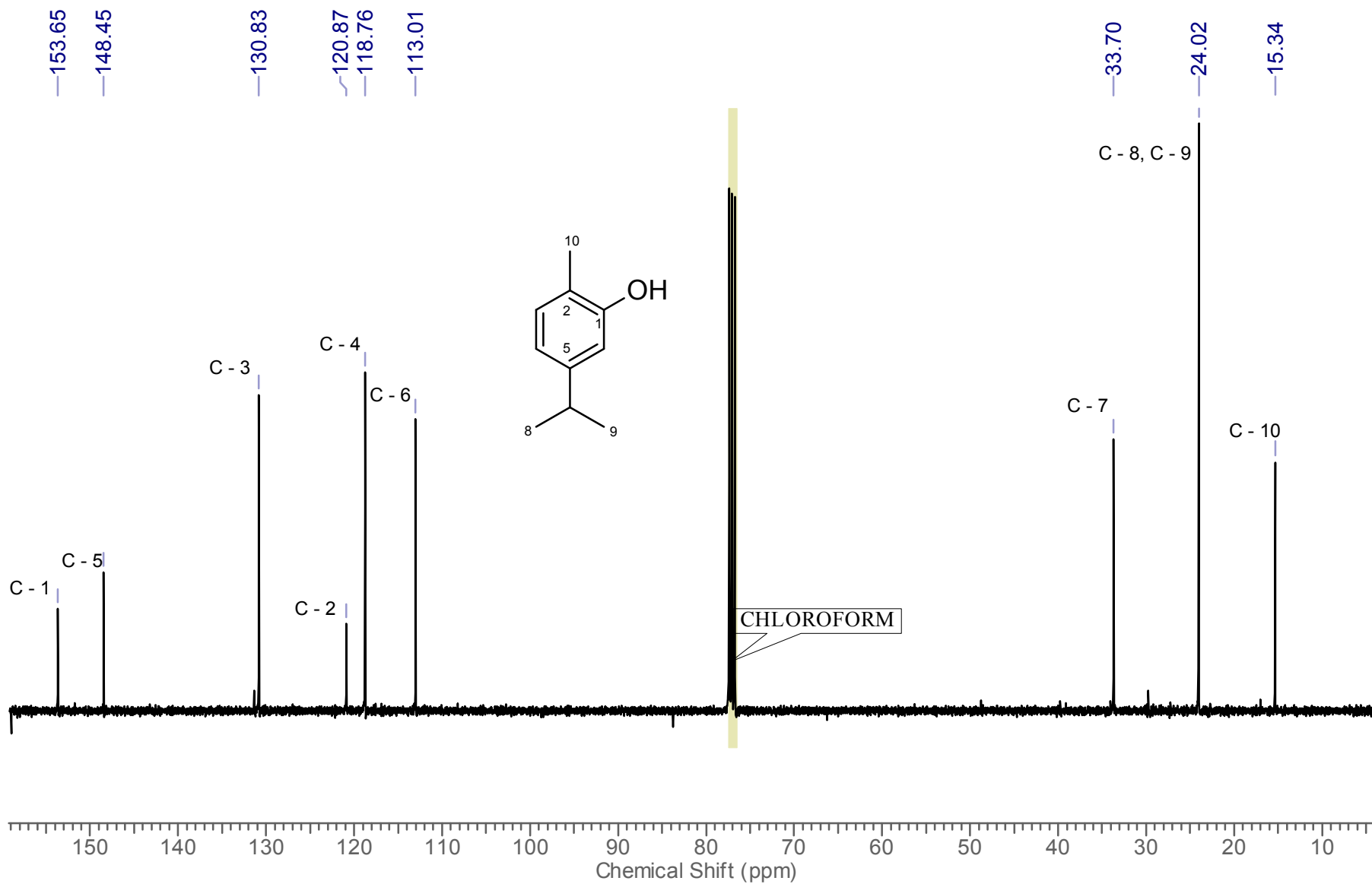
Figure S2. ^{13}C -NMR Spectrum of Carvacrol (**1**) (CDCl_3 , 100 MHz).

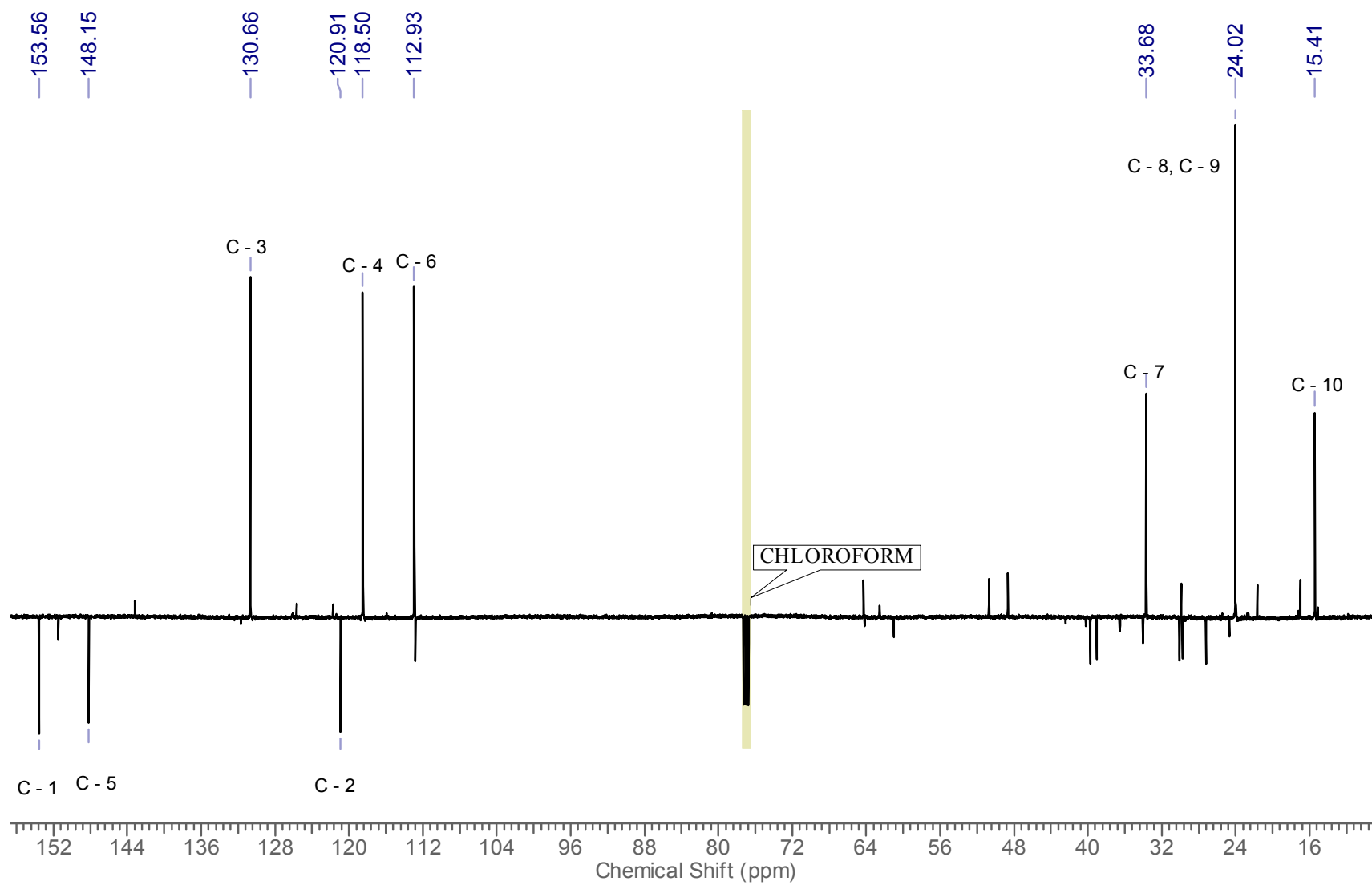
Figure S3. ATP ^{13}C -NMR Spectrum of Carvacrol (CDCl_3 , 100 MHz).

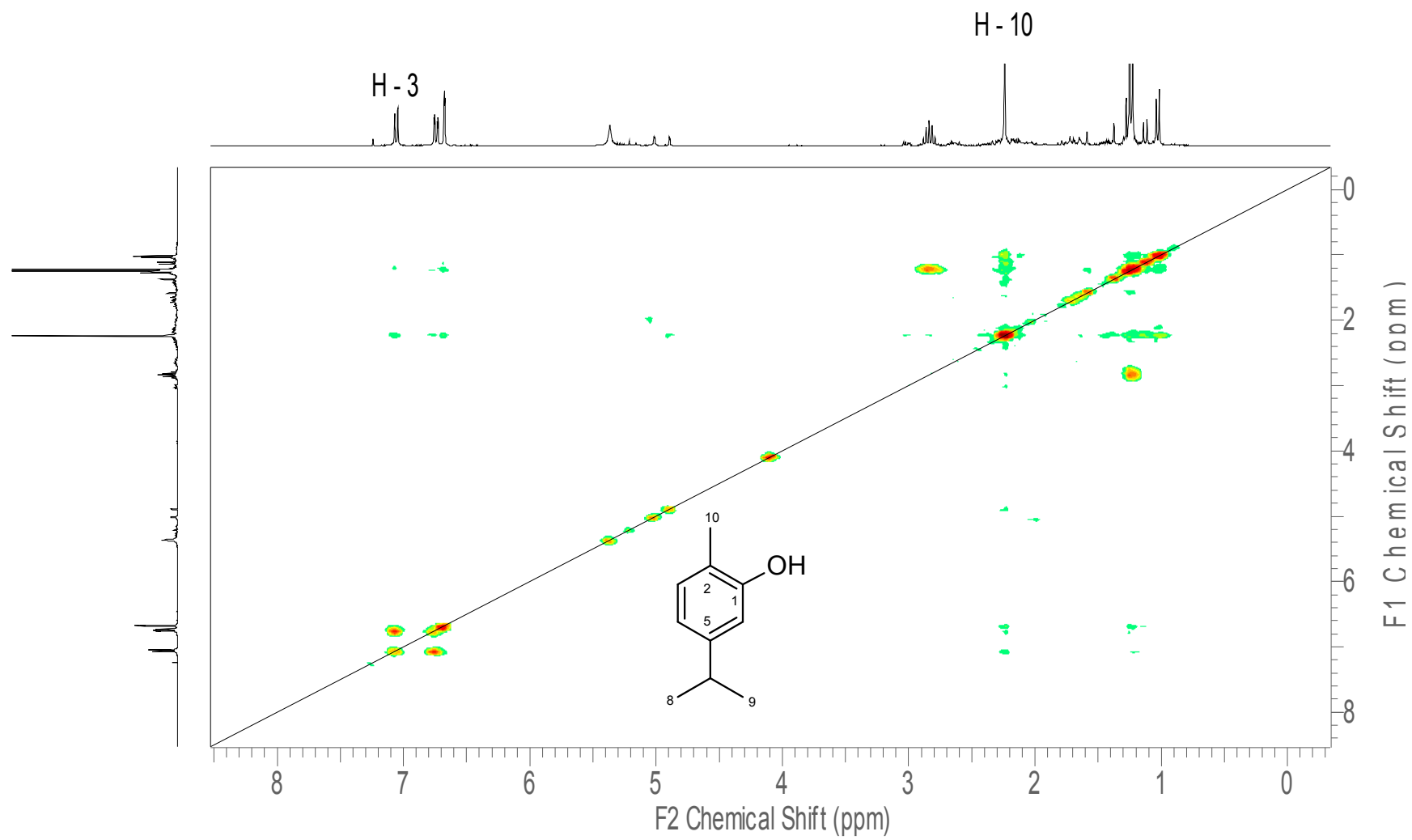
Figure S4. COSY Spectrum of Carvacrol (**1**) (CDCl₃, 400 MHz).

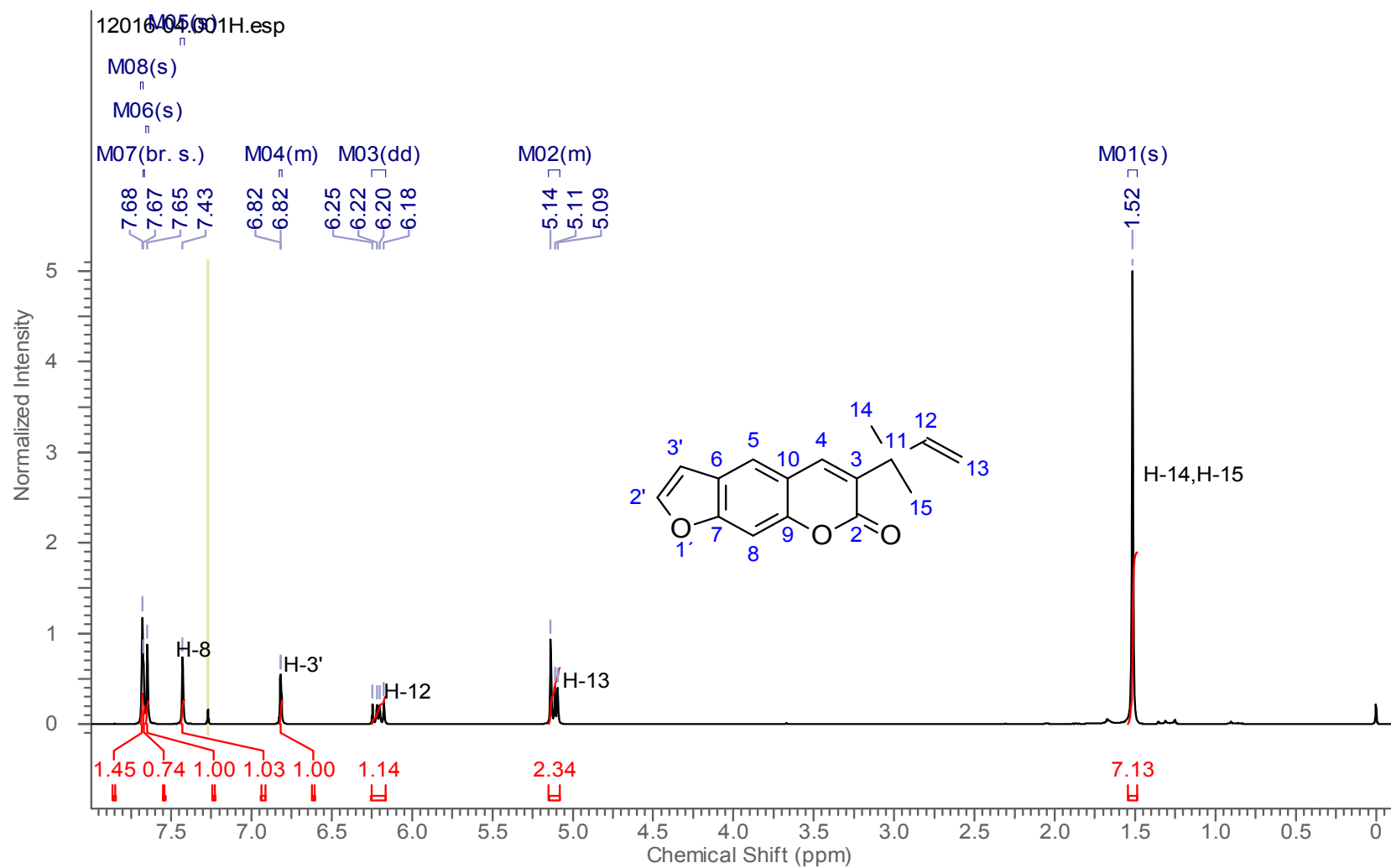
Figure S5. $^1\text{H-NMR}$ spectrum of Chalepensin (**2**) (CDCl_3 , 400 MHz).

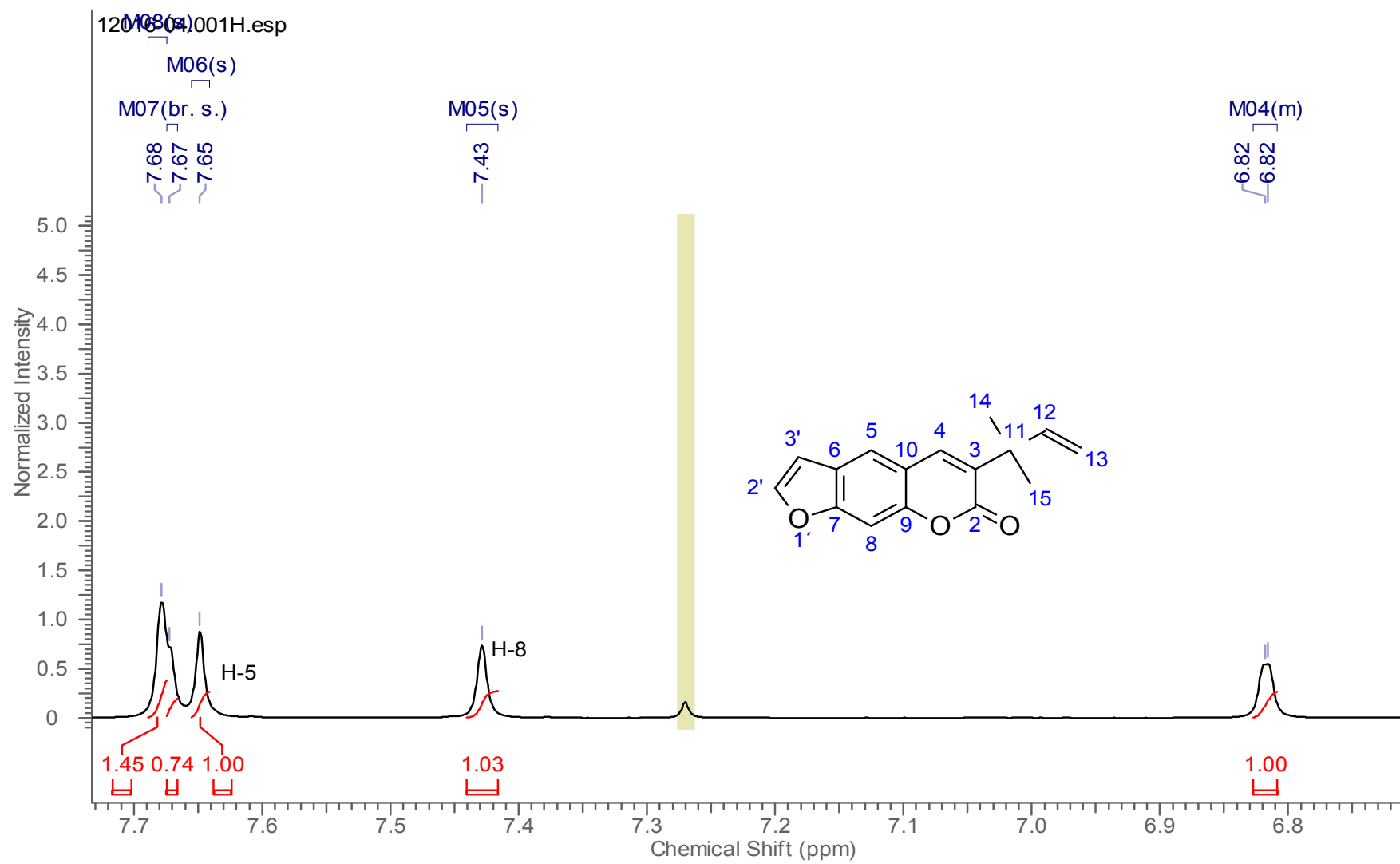
Figure S6. $^1\text{H-NMR}$ spectrum of Chalepensis (**2**) (CDCl_3 , 400 MHz).

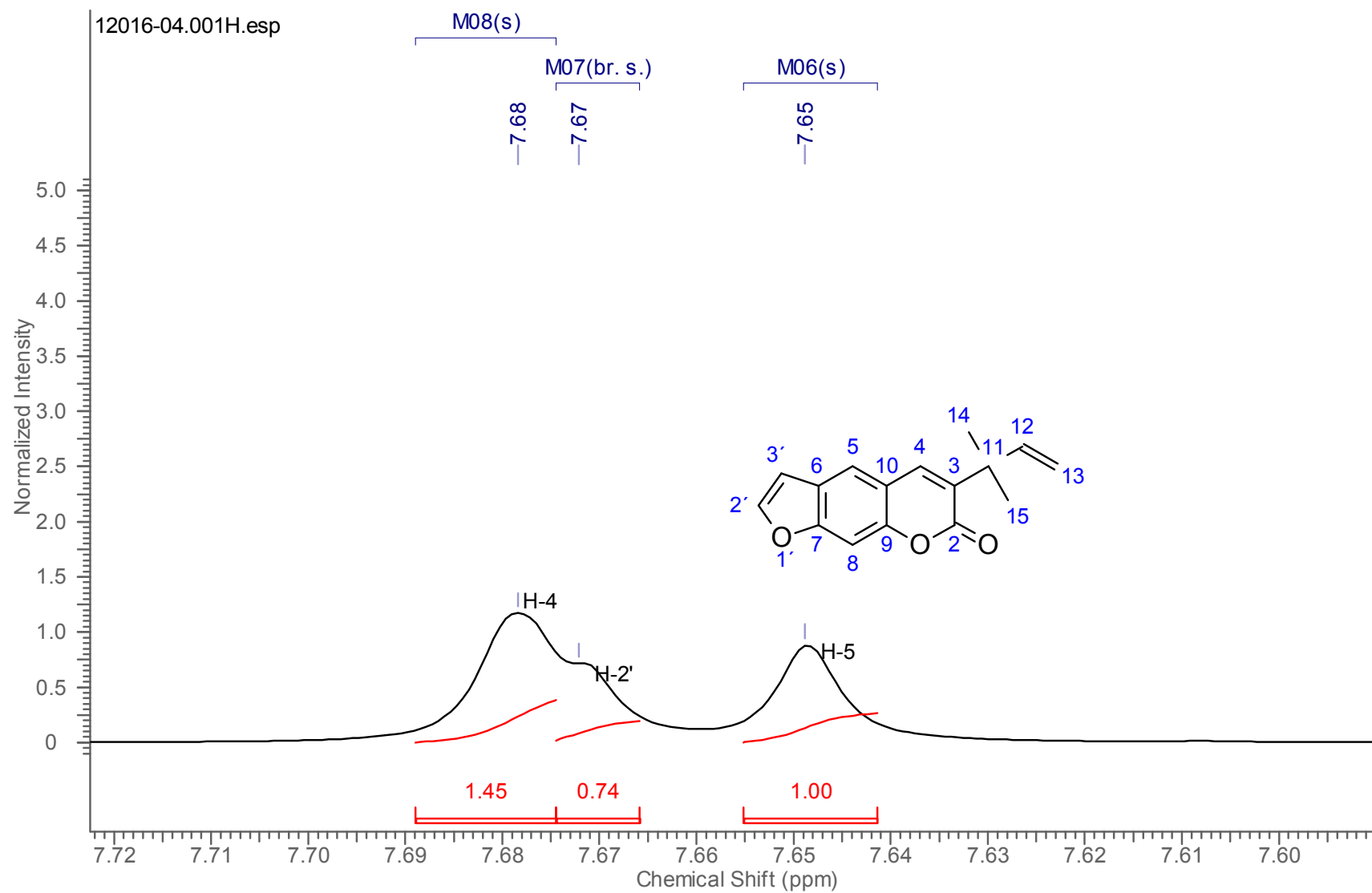
Figure S7. $^1\text{H-NMR}$ spectrum of Chalepensisin (**2**) (CDCl_3 , 400 MHz).

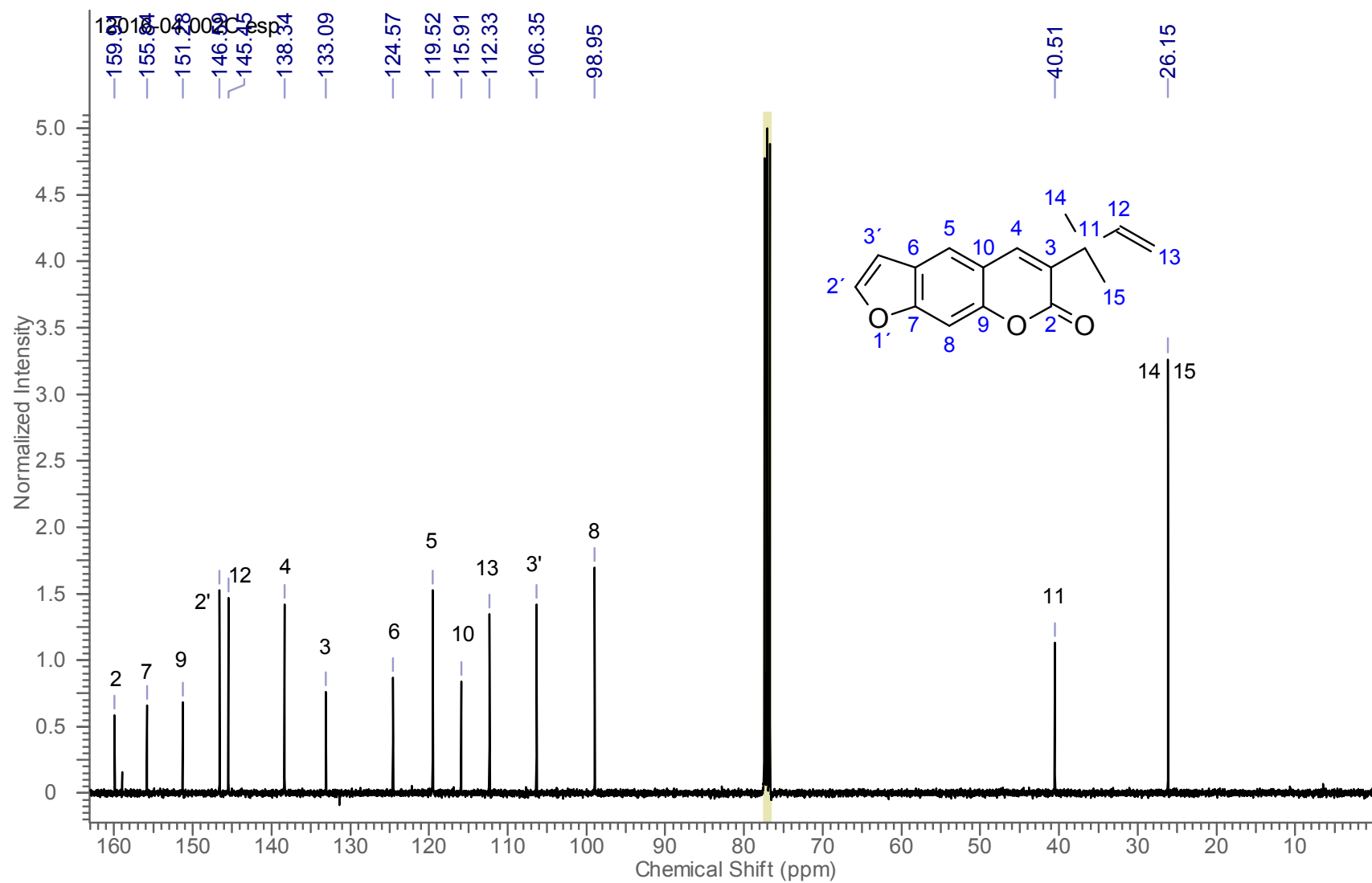
Figure S8. ^{13}C -NMR spectrum of Chalepensin (**2**) (CDCl_3 , 100 MHz).

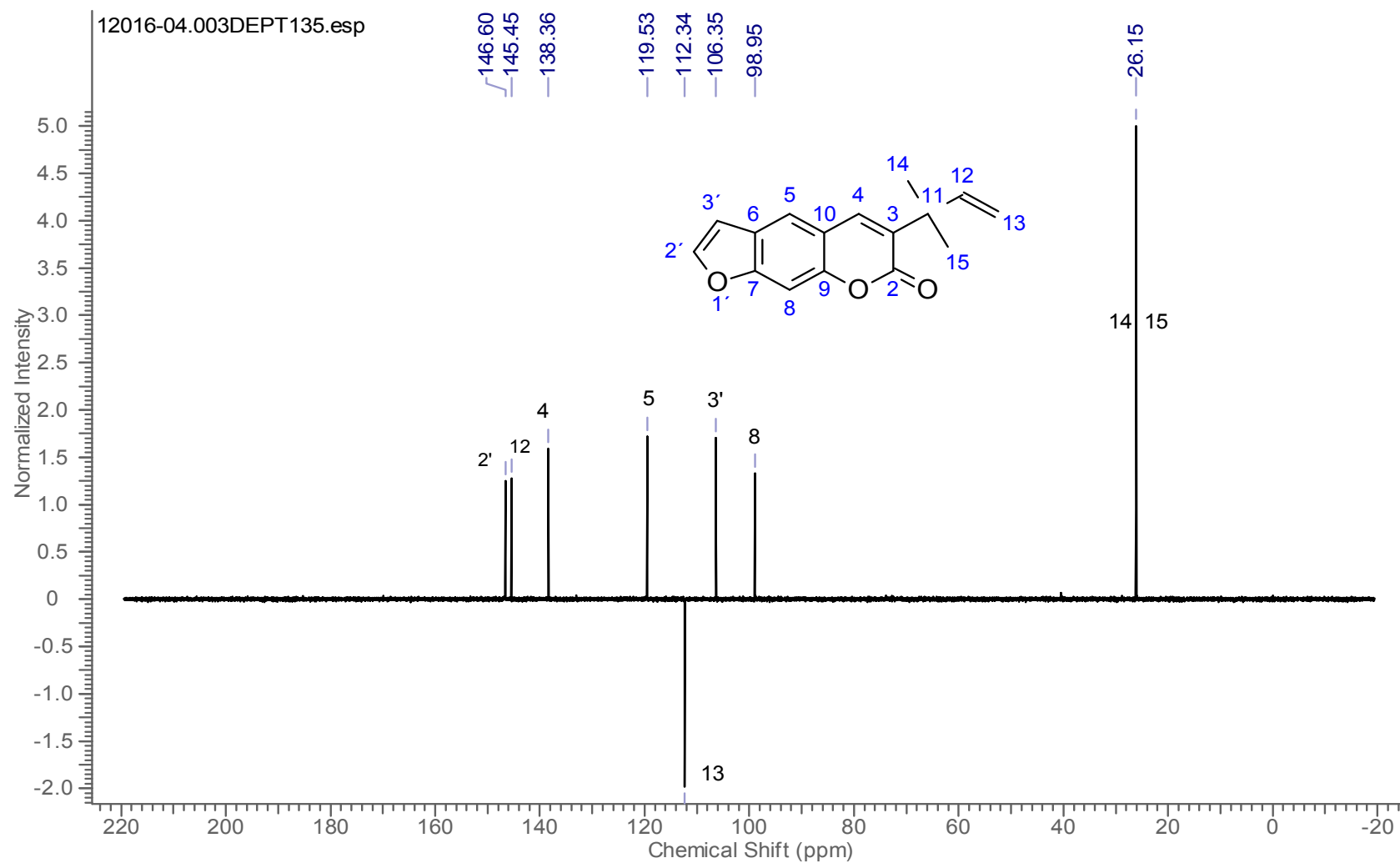
Figure S9. DEPT-135 spectrum of Chalepensisin (**2**) (CDCl₃, 100 MHz).

Figure S10. ^1H - ^1H COSY spectrum of Chalepensisin (**2**) (CDCl_3 , 400 MHz).

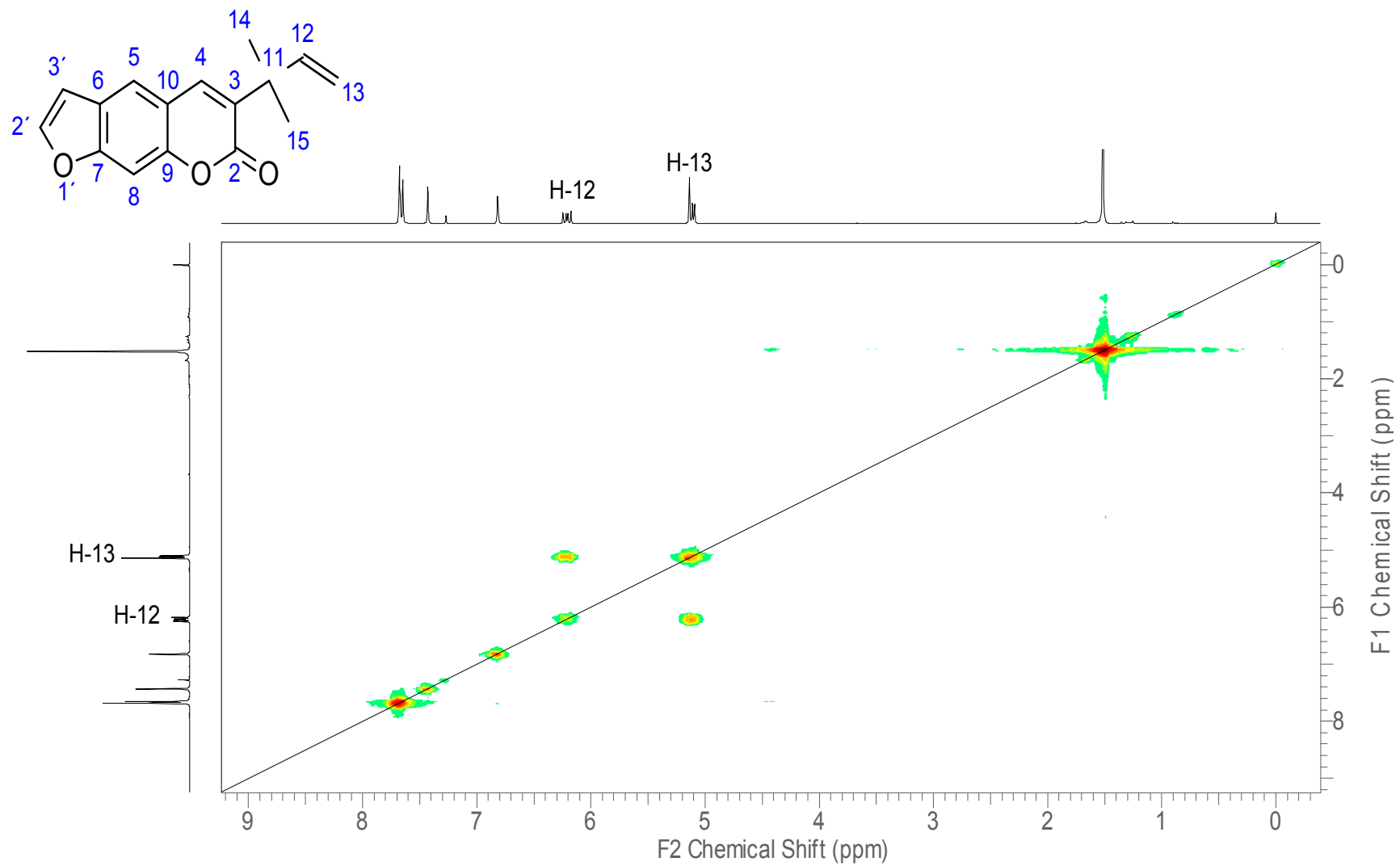


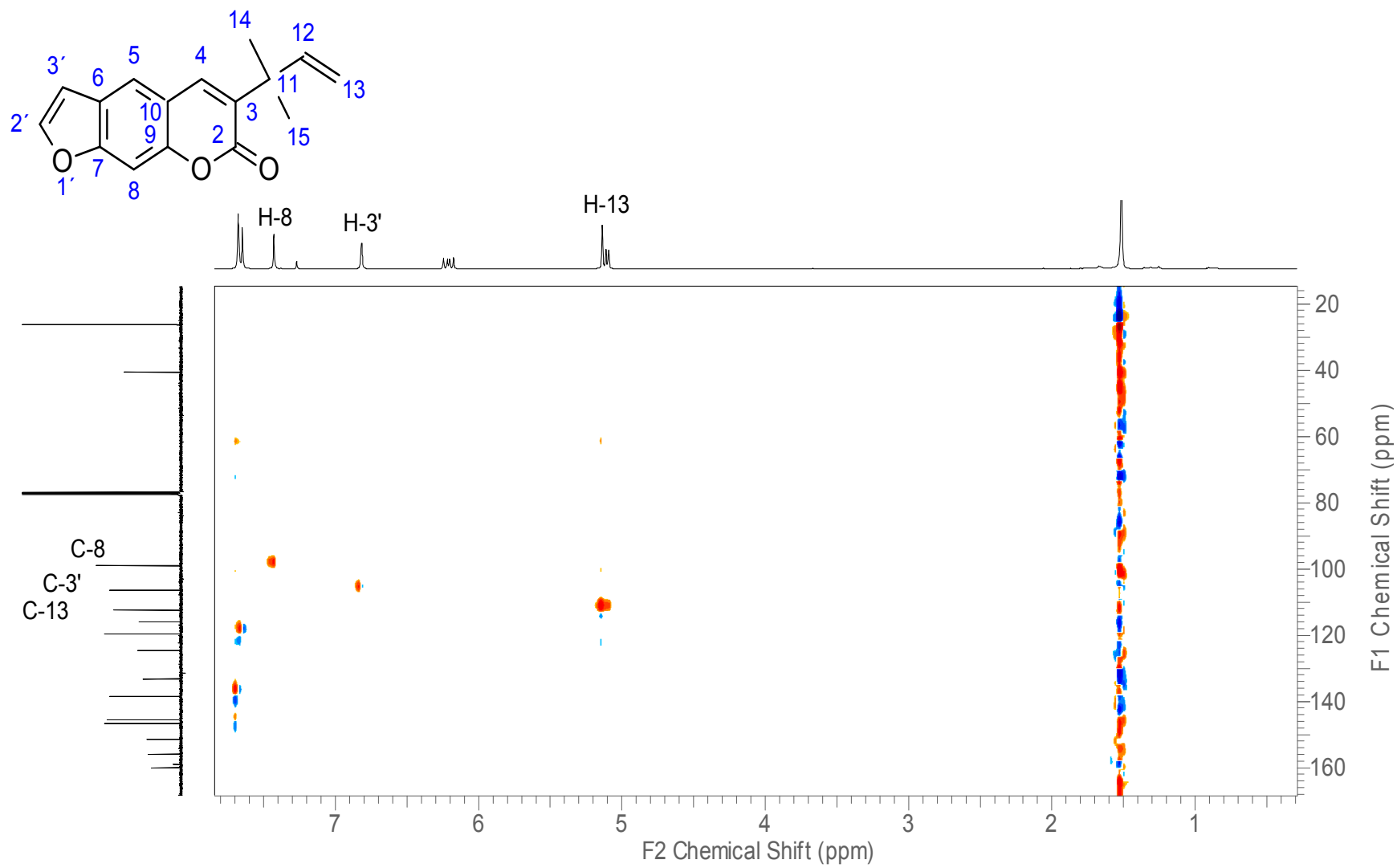
Figure S11. ^1H - ^{13}C -HSQC spectrum of Chalepensisin (**2**) (CDCl_3 , 100 MHz).

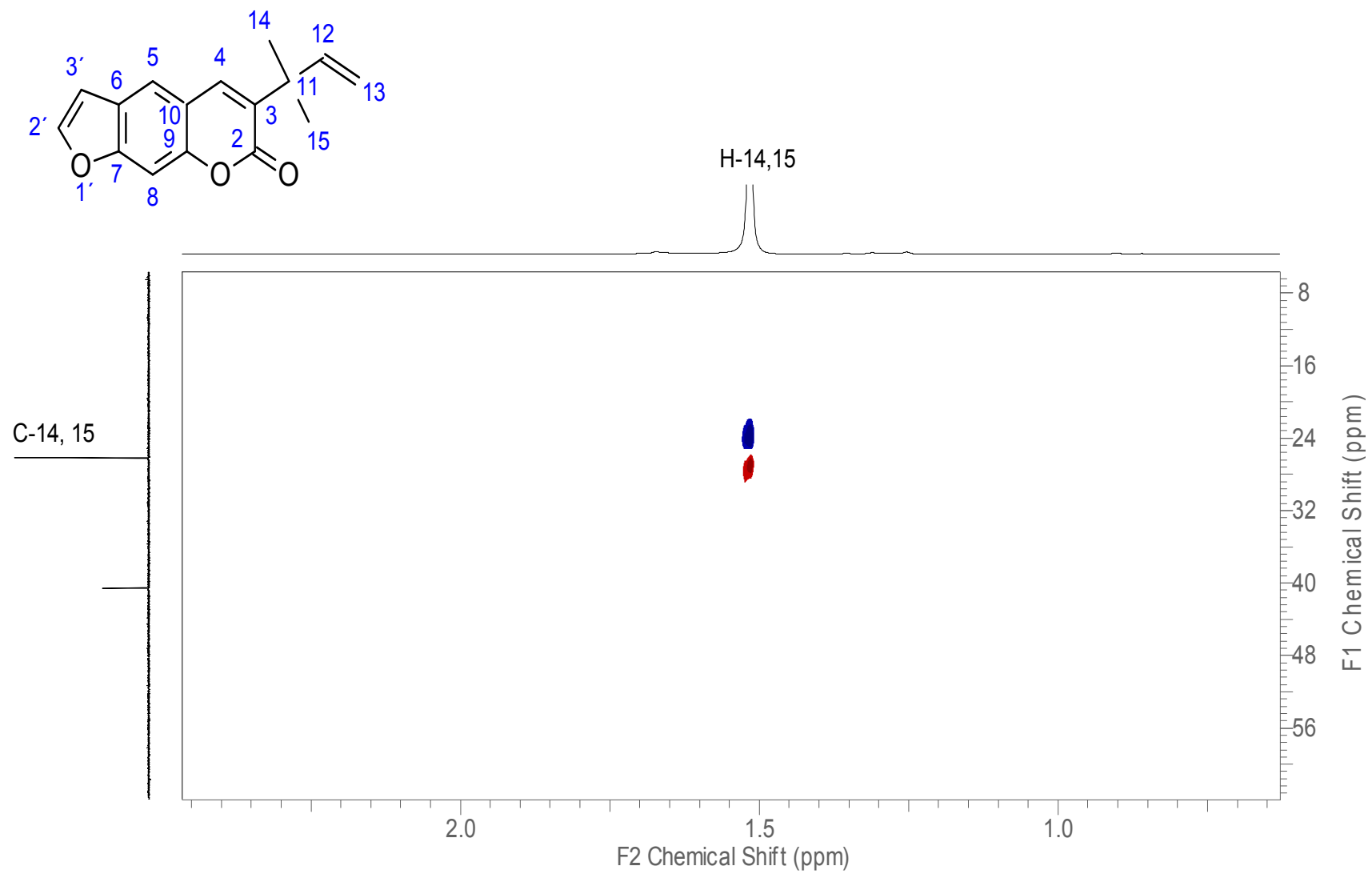
Figure S12. ^1H - ^{13}C -HSQC spectrum of Chalepensin (**2**) (CDCl_3 , 100 MHz).

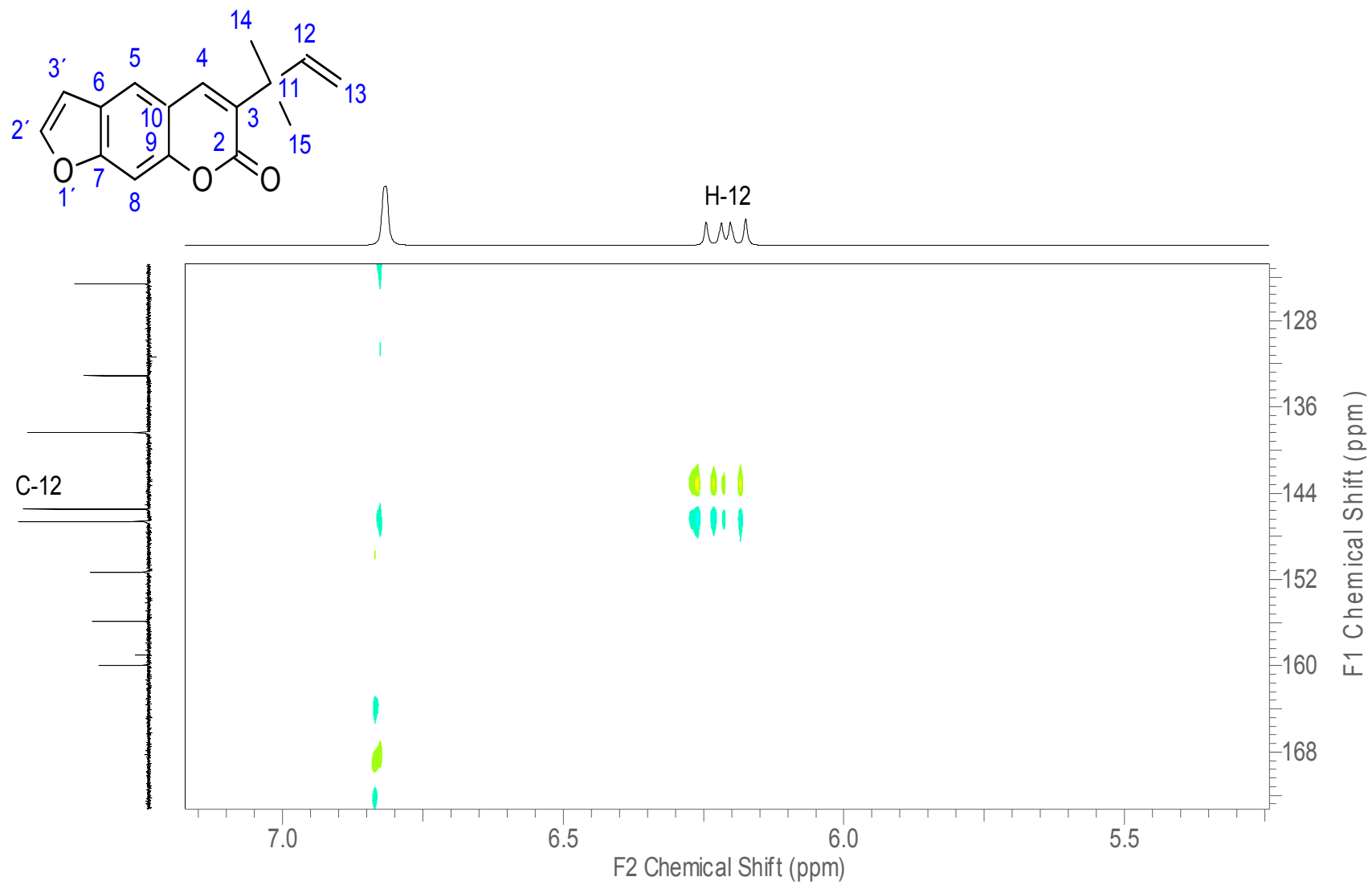
Figure S13. ^1H - ^{13}C -HSQC spectrum of Chalepensin (**2**) (CDCl_3 , 100 MHz).

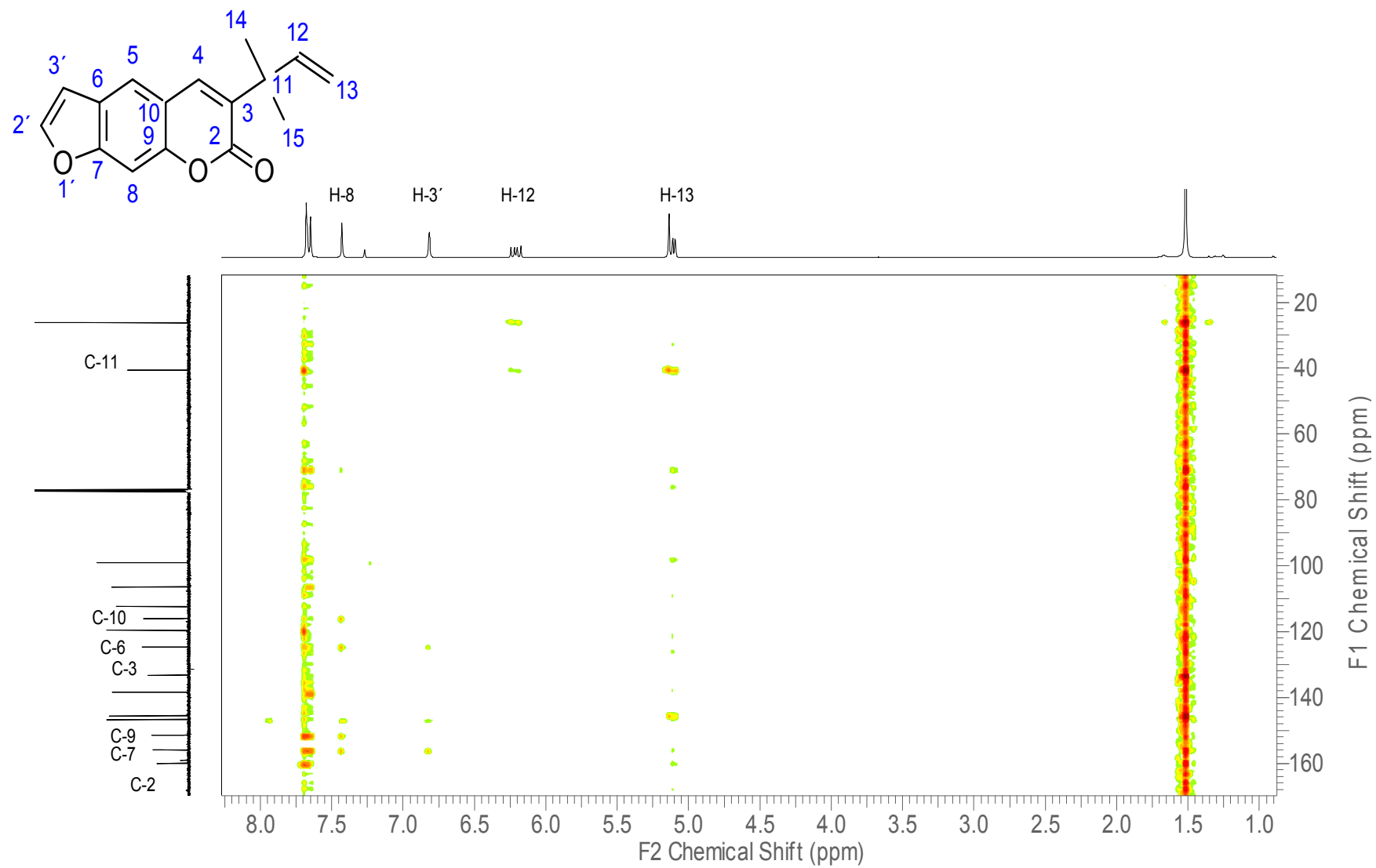
Figure S14. ^1H - ^{13}C -HMBC spectrum of Chalepensisin (**2**) (CDCl_3 , 100 MHz).

Figure S15. ^1H - ^1H -NOESY spectrum of Chalepensin (**2**) (CDCl_3 , 400 MHz).